



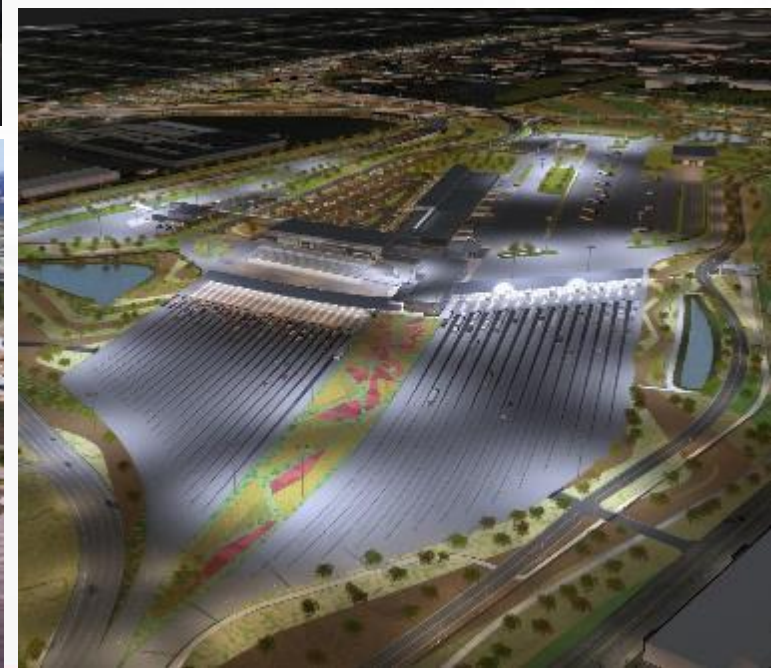
PONT INTERNATIONAL  
**GORDIE**  
**HOWE**  
INTERNATIONAL BRIDGE



# **PUBLIC INFORMATION MEETING #22**

**December 6, 2022**

# PROJECT COMPONENTS





# SUSTAINABLE DESIGN APPROACH



# SCALE MODEL AT CITY HALL



- Windsor City Hall:  
350 City Hall Square,  
Windsor
- 3D model of all four  
components
- McCann Architectural  
Models Inc.

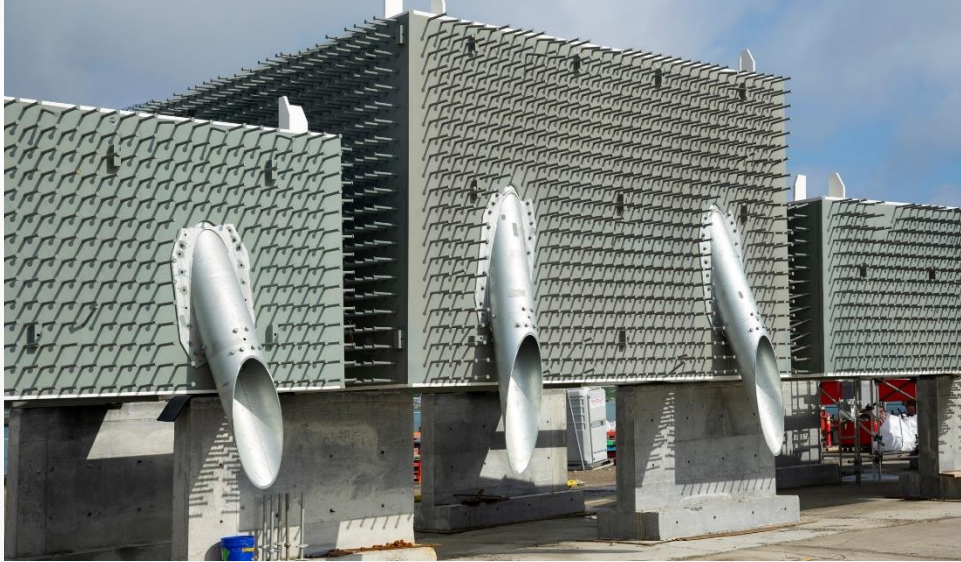
Learn more at [gordiehoweinternationalbridge.com](http://gordiehoweinternationalbridge.com)







# CONSTRUCTION UPDATE: BRIDGE SITES





# CONSTRUCTION UPDATE: CANADIAN PORT OF ENTRY



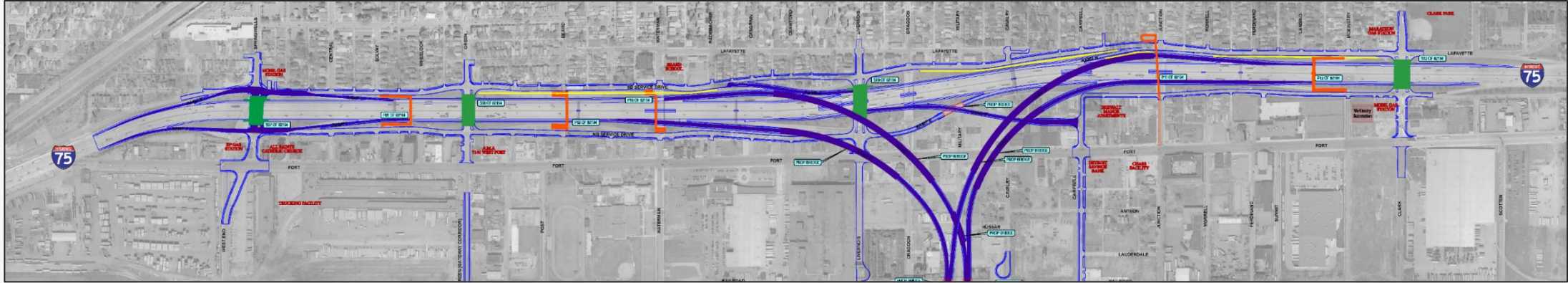


# CONSTRUCTION UPDATE: US PORT OF ENTRY





# CONSTRUCTION UPDATE: MICHIGAN INTERCHANGE (I-75)



The future configuration of this area includes the following:

## Road Bridges

Road bridges carrying vehicular traffic over I-75 will be reconstructed at:

- Springwells Street
- Green Street
- Livernois Avenue (two-way traffic)
- Clark Street

## Pedestrian Bridges

- Waterman Street Pedestrian Bridge
- Beard Street Pedestrian Bridge
- Solvay Street Pedestrian Bridge
- Junction Street Pedestrian Bridge
- Lansing Street Pedestrian Bridge

## Access Ramps

North and southbound I-75 ramps will be accessible as follows:

### Northbound Exit Ramps:

- Springwells Street
- I-75 exit to US POE (**new**)
- Campbell Street (**new**)
- US POE exit to I-75 (**new**)

### Northbound Entrance Ramps:

- Springwells Street
- Livernois Avenue
- Clark Street

### Southbound Exit Ramps:

- Clark Street
- I-75 exit to US POE (**new**)
- US POE exit to I-75 (**new**)
- Waterman Street (**new**)
- Springwells Street

### Southbound Entrance Ramps:

- Springwells Street
- Junction Street



# SANDWICH STREET RECONSTRUCTION



- Three kilometres of Sandwich Street will be reconstructed, from south of the Rosedale Avenue roundabout, past Ojibway Parkway to McKee Avenue.
- Designs are anticipated to be shared in early 2023.
- Construction is anticipated to take place in a phased approach beginning in 2023.



# COMMUNITY BENEFITS PLAN



**The Workforce Development and Participation Strategy** is geared toward engaging businesses and individuals and focuses on supporting workforce, training and pre-apprenticeship/apprenticeship opportunities.



**The Neighbourhood Infrastructure Strategy** focuses on collaborating with stakeholders and community members through consultation to develop a community investment strategy based on identified priorities.

*US Bridge Site*



# WORKFORCE DEVELOPMENT AND PARTICIPATION STRATEGY

Cumulative Totals from September 2018 – August 2022

**7620+** individuals oriented to the project in Canada and the US

**42%** are local



**370+**

apprentices/pre-apprentices assigned to the project



**250+**

co-operative learning experiences have been provided on the project



**230+** local businesses engaged on the project



# WORKFORCE DEVELOPMENT AND PARTICIPATION STRATEGY





# NEIGHBOURHOOD INFRASTRUCTURE STRATEGY





# SANDWICH \$1 MILLION STREET ENHANCEMENTS

- The project will invest \$1 million to further enhance the Sandwich Business Improvement Area (BIA).
- In February 2022, the project team collected feedback through a survey to help prioritize how the \$1 million is invested.
- Survey respondents were asked to rank four categories:



**Hardscaping:**  
Benches, planter  
fences, and waste  
receptacles



**Active  
transportation:** Bike  
racks, wayfinding  
signage, or bicycle  
repair stations



**Landscaping:**  
Potted plants or  
trees, flowering  
shrubs, planter  
boxes, tall grasses or  
other vegetation

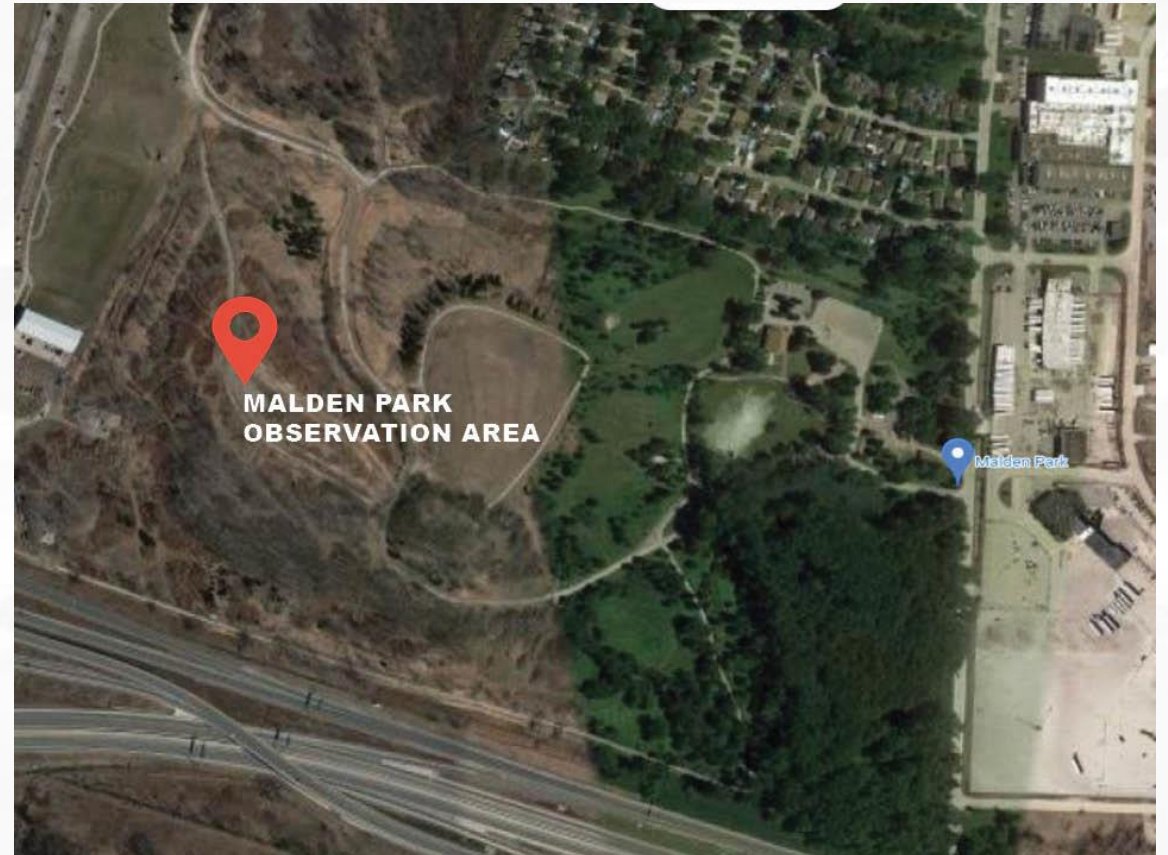


**Gathering spaces:**  
Seating areas of  
tables and benches,  
alone or in clusters to  
allow for community  
interaction



# MALDEN PARK OBSERVATION AREA

- The Malden Park observation area will provide an attractive, safe location and a high elevation for residents, students and tourists to observe the construction of the Gordie Howe International Bridge.
- The project team is currently reviewing designs with the City of Windsor.
- Construction is anticipated for early 2023.



# 2022 COMMUNITY BENEFITS PLAN PROPOSALS

- A portion of the \$10 million has been set aside to support the expansion of existing or additional initiatives. Some of this funding is being assigned this year.
- Feedback from consultation was shared with project leadership for consideration.
- Organizations selected to receive funding will be announced in early 2023.





# COMMUNITY ORGANIZATION INVESTMENT

The Gordie Howe International Bridge team is now accepting funding applications for the 2023 Community Organization Investment initiative.

An **annual \$100,000 (CDN) investment allowance per country** will be made available in 2023 and 2024. Requests for funding can range from **\$1,000 - \$25,000 (CDN)**.

Applications will be considered for funding if:

- The organization(s) applying is **located in or provides services to the host communities** of Sandwich/west Windsor or Delray/Southwest Detroit neighbourhoods
- The requested funding will be invested in **events, programming and infrastructure improvements** that will benefit the host communities
- The applicant is a **registered charity or has a trustee relationship** with a registered charity.

Applications are being accepted until **January 25, 2023**.



# COMMUNITY ORGANIZATION INVESTMENT INFORMATION SESSIONS



- **Virtual Information Session**

- Wednesday, December 14, 2022, 10:00 a.m. – 11:00 a.m.
- Register at [GordieHoweInternationalBridge.com](https://GordieHoweInternationalBridge.com)

- **Windsor Information Session**

- Wednesday, January 11, 2023, 4:00 p.m. – 7:00 p.m.
- Sandwich Community Office, 3201 Sandwich Street, Windsor

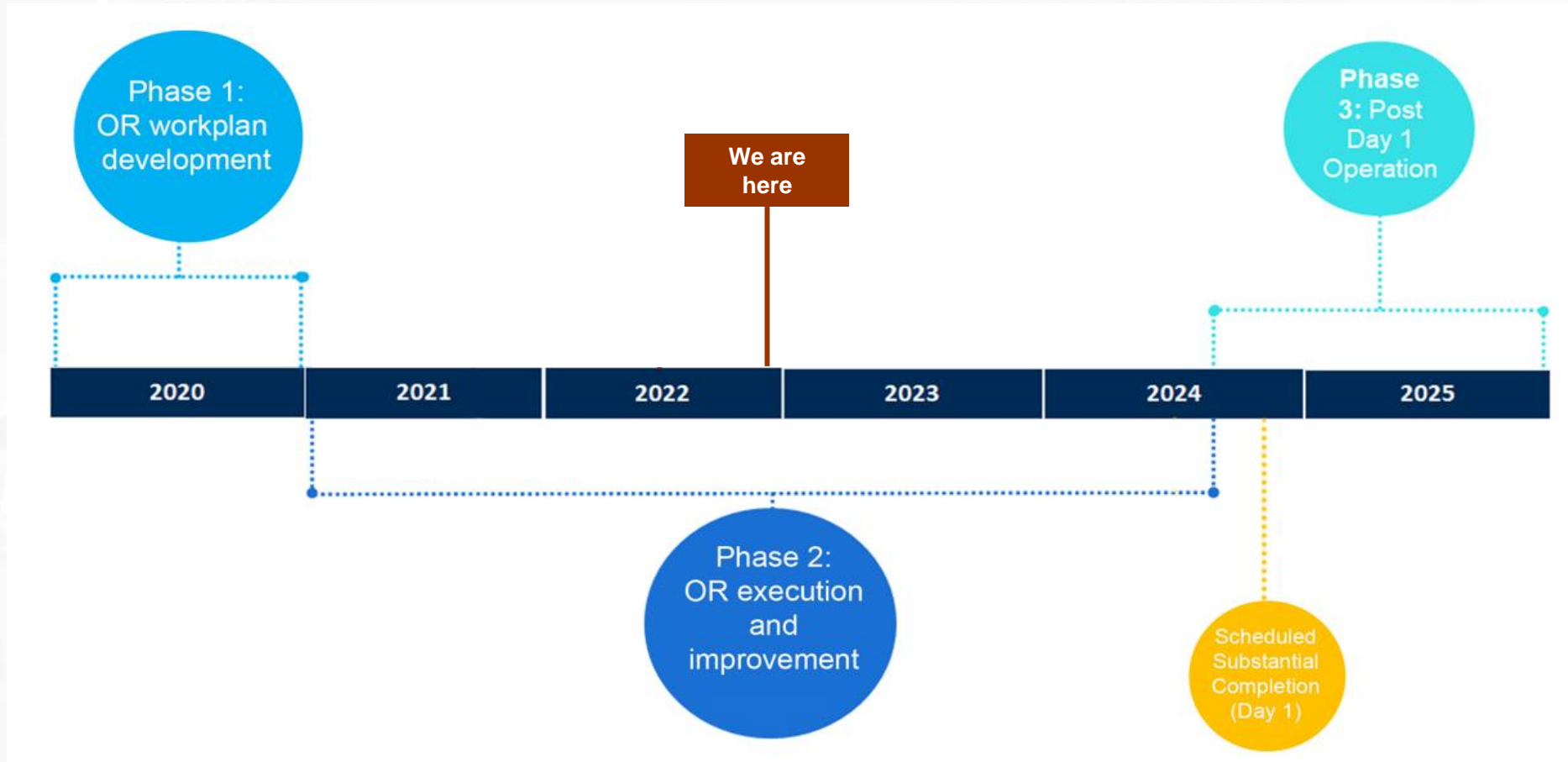


- **Detroit Information Session**

- Thursday, January 12, 2023, 4:00 p.m. – 7:00 p.m.
- Southwest Detroit Community Office, 7744 W Vernor Hwy, Detroit



# PREPARING FOR OPENING DAY: OPERATIONAL READINESS



WDBA periodically to update it)

# COMMUNITY OFFICE HOURS



Sandwich Community Office  
3201 Sandwich St.  
Windsor

Available appointment hours:

- Tuesdays 1:00 pm – 4:30 pm
- Thursdays 8:00 am – 12:00 pm.



Southwest Detroit Community Office  
7744 W Vernor Hwy.  
Detroit

Available appointment hours:

- Tuesdays 8:00 am – 12:00pm
- Thursdays 1:00 pm – 4:30 pm

After-business appointments may be available upon request



# QUESTION AND COMPLAINT PROCESS

The project team is committed to ensuring that communication with the public is maintained during construction so concerns are addressed as quickly as possible. Adjacent residents and businesses will receive notifications of upcoming work, regular progress updates and project contact information.

Questions and complaints can be addressed to WDBA through the following:

- Public inquiry line: 1-844-322-1773
- [Info@wdbbridge.com](mailto:Info@wdbbridge.com)
- Booking an appointment at the Sandwich or Southwest Detroit Community Office



# LEARN MORE

 [gordiehoweinternationalbridge.com](http://gordiehoweinternationalbridge.com)

 1-844-322-1773

 @gordiehowebrg

 @gordiehowebridge

 Gordie Howe Bridge

 @gordiehowebrg

 WDBA-APWD

