



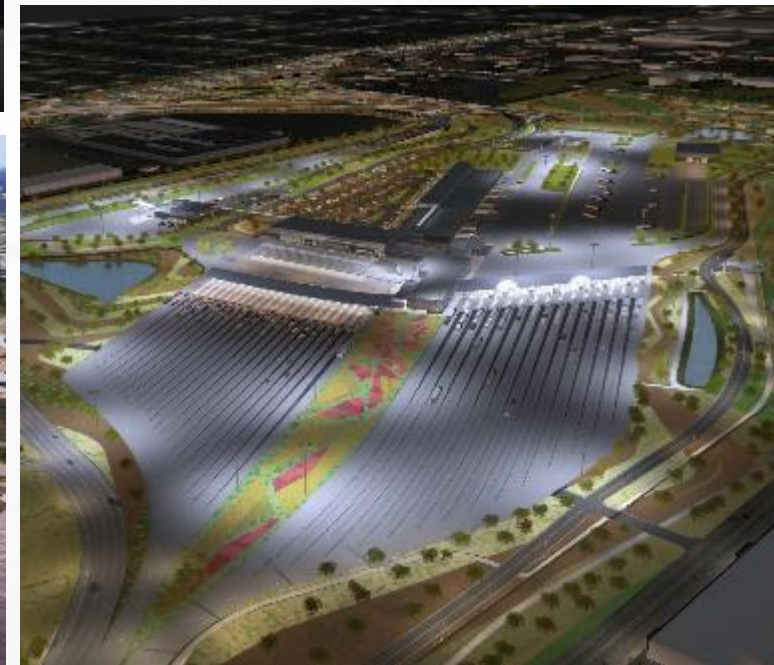
PONT INTERNATIONAL
GORDIE
HOWE
INTERNATIONAL BRIDGE

ONLINE COMMUNITY MEETING

March 31, 2021



PROJECT COMPONENTS



PROJECT SUSTAINABILITY UPDATE

GOLD WINNER

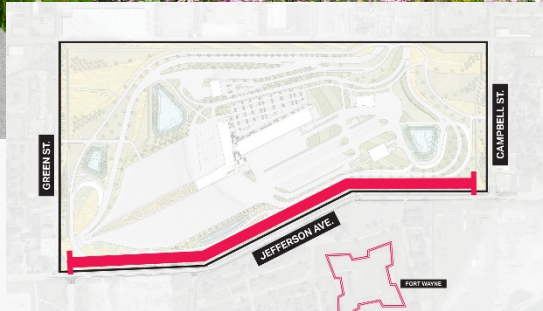
Windsor-Detroit Bridge Authority and the
Gordie Howe International Bridge Project

P3 Awards 2020

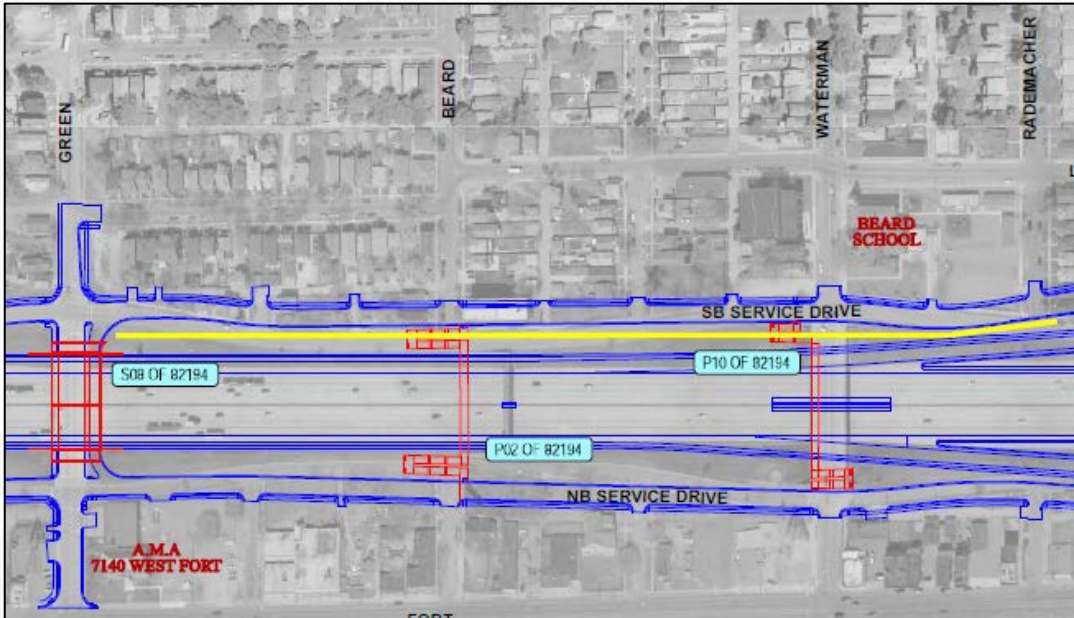
ESG Performance of the Year

- The Canadian and US Port of Entry facilities are designed to meet LEED v4 Silver rating and the bridge and Michigan Interchange were designed to meet Envision Silver, both of which will ensure longevity while minimizing environmental impact.
- In November 2020, the project team submitted the Envision application to ISI for review, with the LEED application anticipated to be submitted in summer 2021.
- The project was recently honoured with the Environmental, Social and Governance Performance of the Year award by P3 Bulletin.

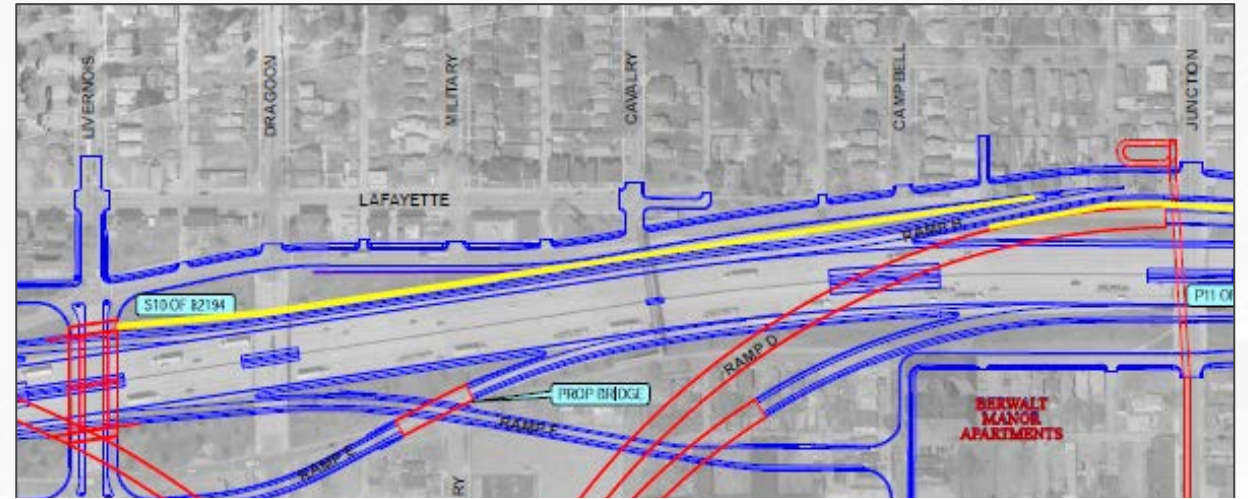
JEFFERSON BARRIER WALL DESIGN



US NOISE BARRIER LOCATIONS



Noise barrier located between Green Street and Rademacher Street



Noise barrier located between Livorno St and Junction St



Noise barrier located between Junction St and Clark St

VISUAL ART PROGRAM

Multiple art commissions have been identified for inclusion in the Gordie Howe International Bridge project:

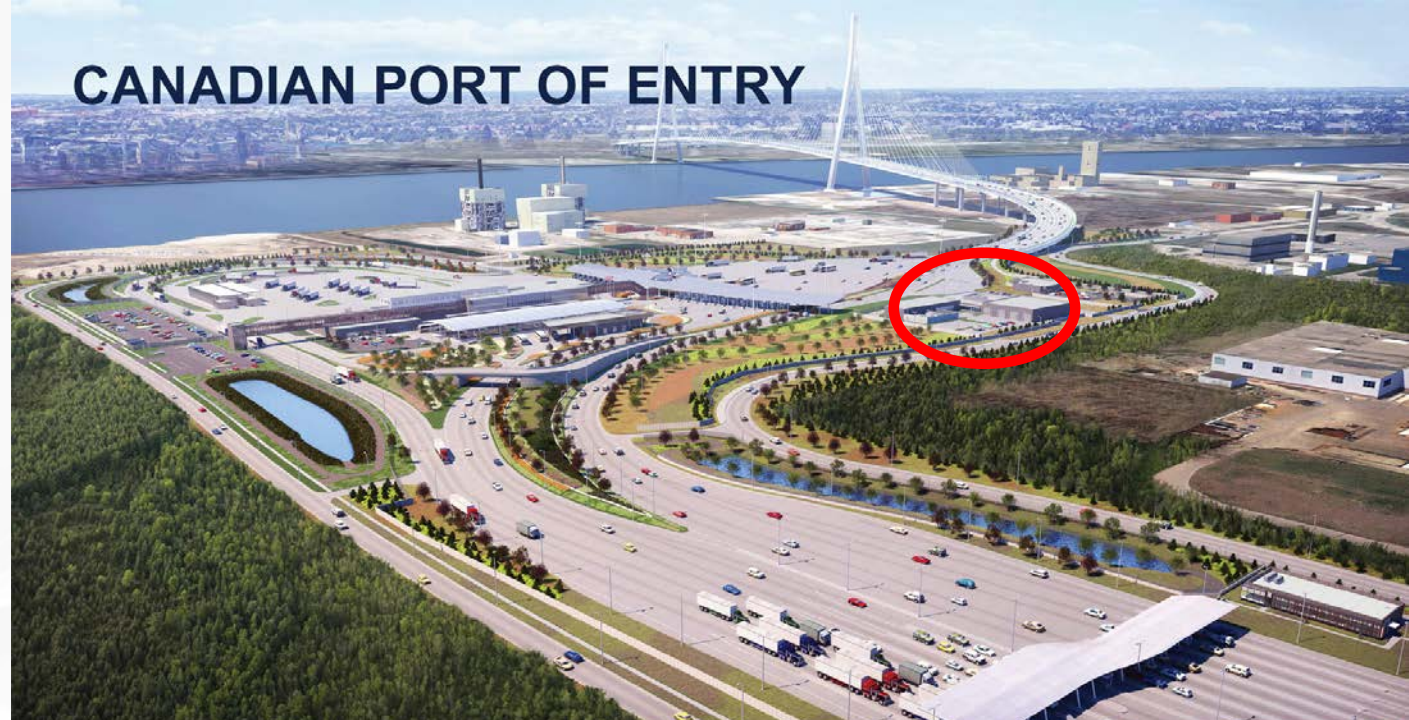
- dramatic and dynamic bridge lighting at night
- an artistic building facade at the Canadian Port of Entry
- a standalone Indigenous art commission to be completed by an Indigenous artist in Canada

The visual art program is part of a larger effort to incorporate public art and other forms of cultural and historical recognition into the project, based on continued community engagement.



COMMISSION OBJECTIVES AND LOCATION

- Noted Canadian artist to be engaged
- Positive imagery
- Sense of welcome
- Colour
- Improve the façade of the Energy Centre by integrating thinking of the artist
- Approach: inscribed imagery or bas relief achieved using form liners



ARTIST: SARA GRAHAM

- BFA (1997): Nova Scotia College of Art and Design
- MFA (2006): University of Guelph.
- Current Resident Artist for the City of Port Moody
- Recent Public Art commissions and exhibits:
 - Public Art – Richmond BC (2020)
 - Surrey Art Gallery (2018)
 - Confederation Centre for the Arts (2015)
 - Kitchener-Waterloo Gallery (2015)
 - Museum London (2010).
- Graham is specifically engaged in cross-disciplinary artistic practices and theoretical approaches that incorporate philosophical, cultural, sociological and architectural criticism of the nature and condition of the city and city life. One of Graham's central engagements in her practice is in the mapping of systems and networks and how their interconnectivity affects everyday lives



CONSTRUCTION UPDATE: CANADIAN BRIDGE SITE



Canadian bridge site tower work



Canadian bridge site tower work

CONSTRUCTION UPDATE: US BRIDGE SITE



US bridge site tower work



US bridge site side/back span work

CONSTRUCTION UPDATE: CANADIAN POE



Canadian Port of Entry site



Canadian Port of Entry building foundations

CONSTRUCTION UPDATE: US POE



US Port of Entry site



US Port of Entry wick drain installation

CONSTRUCTION UPDATE: MI INTERCHANGE

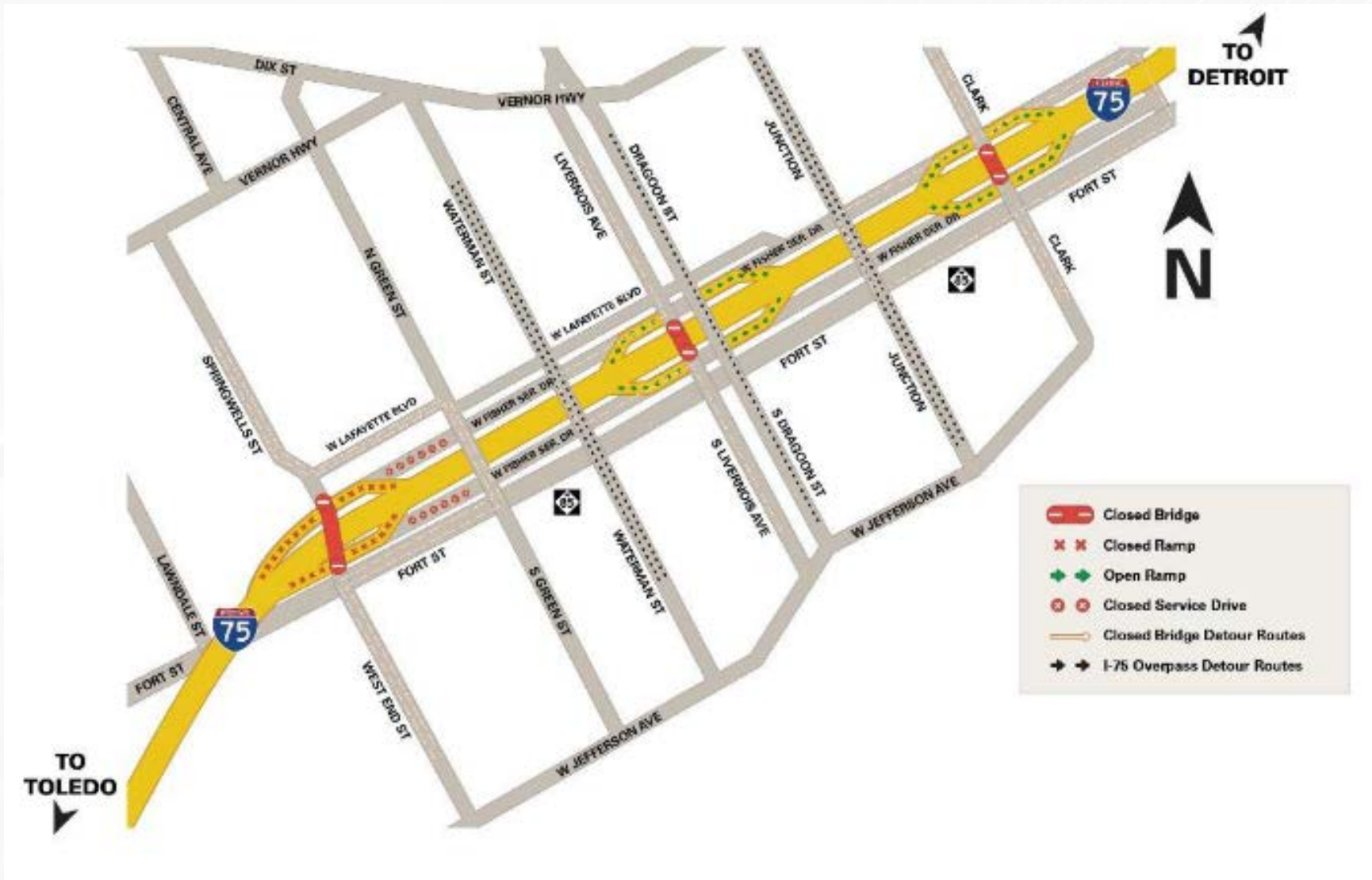


Michigan Interchange Cavalry siphon work



Michigan Interchange Clark bridge abutment work

PHASE 1 MICHIGAN INTERCHANGE WORK



US TRAFFIC CLOSURES: TRANSITION OF I-75 NORTHBOUND AND SOUTHBOUND SERVICE DRIVES

Bridging North America will close several ramps and the northbound and southbound I-75 Service Drives between Dragoon Street and Clark Street. Junction Street will remain open to through traffic. This closure is required to support the construction of siphon work.

Beginning March 30, 2021, the following long-term closures will be implemented:

- The Clark Street ramps to north and southbound I-75
- The Livernois Avenue ramps to north and southbound I-75
- I-75 Service Drive in both directions will close between Clark Street and Dragoon Street until June 15, 2022. Junction Street will remain open to through traffic.

US LONG-TERM TRAFFIC CLOSURES: I-75 NORTH AND SOUTHBOUND

To support construction work for the Springwells Street, Livernois Avenue and Clark Street bridges, the following long-term closures are required:

Northbound I-75 Closures:

- The left lane will close on northbound I-75 between Harbaugh Street and Clark Street from March 7 – January 31, 2022.

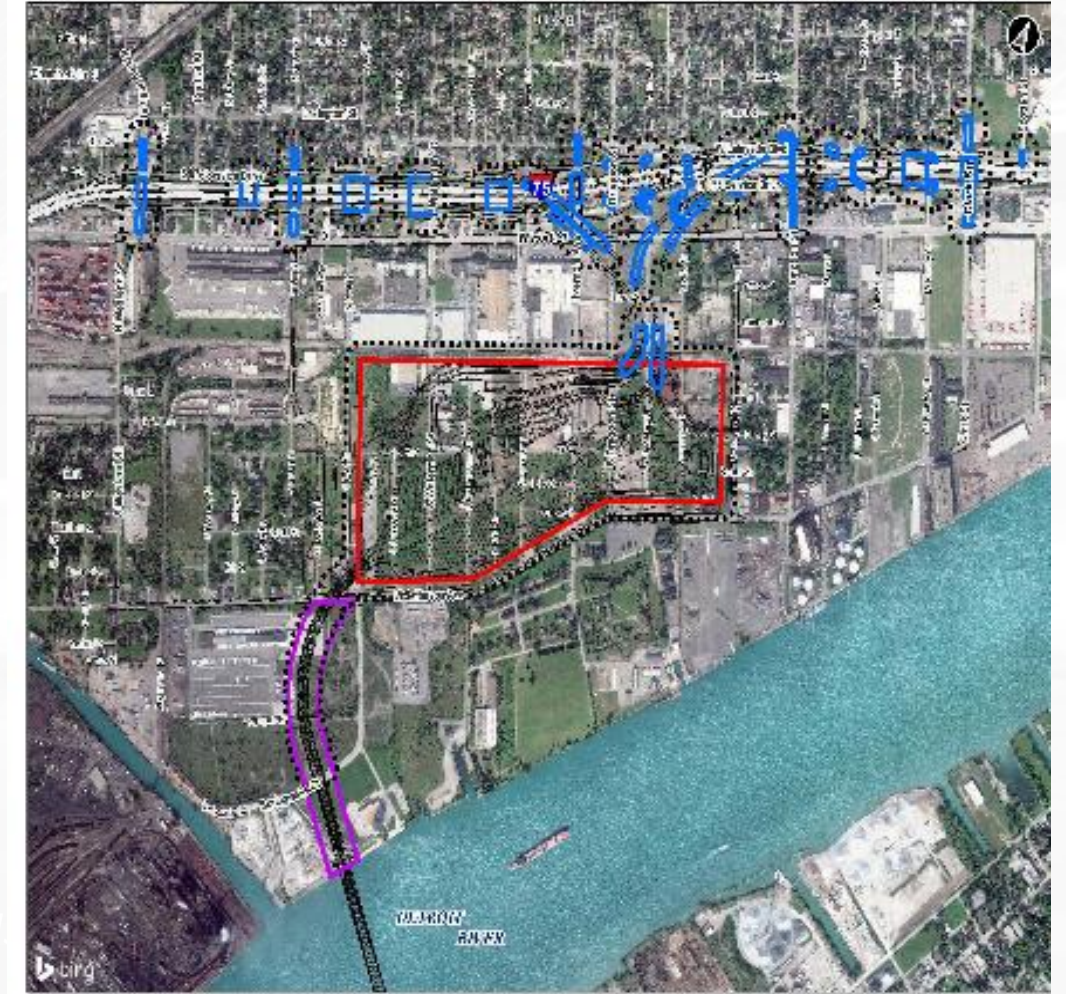
Southbound I-75 Closures:

- The right lane of southbound I-75 will close between Bagley Avenue and McKinstry Street from March 14 - June 30, 2021.
- The Vernor Highway on-ramp to southbound I-75 will be closed from March 14 - July 7, 2021.
- The left lane of southbound I-75 will close between Springwells Street and McKinstry Street from March 14, 2021, to January 31, 2022.

CONSTRUCTION MITIGATION

Vibration Monitoring

- In some instances, construction activities may cause noise and vibration beyond the project limits.
- In accordance with the Final Environmental Impact Statement (FEIS) and the Record of Decision (ROD), pre-construction, construction and post-construction foundation surveys are being made available to owners of properties located within 150 feet of identified vibration zones.
- Monitoring is being undertaken in a staged approach.
 - Zone One began in late 2019
 - Zone Two began in early 2021.
- Owners of residential and business properties that fall within the identified areas have been issued letters to opt-in to the program.



UPDATE SANDWICH STREET RECONSTRUCTION

- BNA detailed design work is underway and is anticipated to be complete in mid-2021.
- Construction timelines:
 - City of Windsor sewer relining work began in November 2020 and will carry into summer 2021
 - Enwin water line replacement and BNA road construction work will follow.
- Additional below-ground survey work will be performed later this year or early next.
- Archaeological assessment work is underway.
- Further consultation and communications will be undertaken as the design and construction planning advances



CONSTRUCTION MITIGATION

Measures are being taken to minimize the impact of construction in accordance with the commitments in the approved Environmental Assessment Report and Federal Screening Report in Canada and the Environmental Impact Statement in the US. These include:

Dust control

- periodic watering or stabilization of disturbed and exposed soils
- limit speed of vehicular traffic
- use water sprays during loading/unloading of materials
- sweep or water flush entrances to construction zones
- installation of monitoring stations at the perimeter of construction areas.

Noise

- ensure all construction equipment is in good repair, fitted with functioning mufflers and complies with noise emission standards
- maximize the distance between the construction staging areas and nearby receptors
- provide regular updates to nearby residents and businesses on possible activities that will affect them
- conduct ongoing noise monitoring in the vicinity of construction.

COMMUNITY BENEFITS PLAN



The Workforce Development and Participation Strategy is geared toward engaging businesses and focuses on supporting workforce, training and pre-apprenticeship/apprenticeship opportunities



The Neighbourhood Infrastructure Strategy focuses on collaborating with stakeholders and community members through consultation to develop a community investment strategy based on identified priorities.

US Bridge Site

COMMUNITY ART, CULTURE AND HISTORY

- In 2021, the project team will begin consultation and community engagement for the **Windsor-Detroit Cross-River Tour**.
- This initiative celebrates the unique culture, history and diversity of the Sandwich and Delray communities through interpretive signage and plaques installed at key locations along pedestrian and cyclist routes in the host communities.
- The project team will partner with local historians and community members to inform the development of these signs to ensure that they reflect the character of the region and celebrate important moments in each community's history.
- A subcommittee will be struck to provide ongoing community feedback.

TREE PLANTING INITIATIVES

DETROIT

On **Saturday, April 10, 2021, between 1PM – 4PM**, Greening of Detroit will host a tree giveaway in partnership with the Gordie Howe International Bridge project.

A variety of 3-gallon potted trees will be available to those living in between W. Vernor Hwy, Woodmere, Jefferson and Clark Streets. Trees must be reserved in advance through [GreeningofDetroit.com](https://www.GreeningofDetroit.com)

WINDSOR

This fall, the project team will partner with Essex Region Conservation Authority (ERCA) to plant large stock trees in parks and schoolyards within the Sandwich community as well as neighbourhood engagement and education about trees, environmental cleanups and garden maintenance.



DELRAY HOME IMPROVEMENT PROGRAM

- The Community Benefits Home Repair Program launched in January 2021, and will continue through to 2024, funding permitted.
- Initial target area includes properties located south of I-75 in Delray.
- Repairs that will be offered to eligible homes include:
 - Window replacement
 - HVAC system replacement
 - Insulation
 - Roof Repair
- Repairs will be undertaken in a staged approach.



Visit GordieHoweInternationalBridge.com to learn more and complete an application..

BUSINESS DEVELOPMENT PROGRAMS

SANDWICH BUSINESS DEVELOPMENT PROGRAM

The Sandwich Business Development Program launched in October 2020 and includes free business supports offered through the WindsorEssex Small Business Centre (WESBC) and The Accelerator in partnership with Baker Tilly Live.

Supports for businesses in Sandwich/west Windsor include:

- Free consultations and assessments offered by WESBC
- Digital Service Squad Support offered by WESBC
- Business workshops offered by WESBC or The Accelerator with Baker Tilly Live

BRIDGE TO PROSPERITY PROGRAM

The Southwest Detroit Business Association's (SDBA) Bridge to Prosperity Program launched in early 2020.

Supports for Delray/Southwest Detroit businesses include:

- Business coaching and technical assistance
- Business office hours



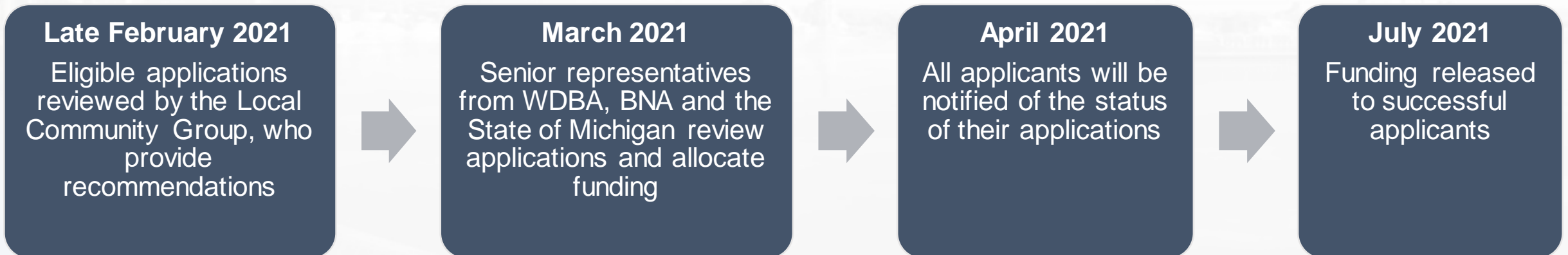
2021 COMMUNITY ORGANIZATION INVESTMENT

The Community Organization Investment is an annual **\$50,000 (CDN)** investment allowance per country for community organizations located in or servicing Sandwich/west Windsor and Delray/Southwest Detroit. Funding will be made available for eligible organizations between 2020 and 2024. Requests for funding can range from **\$1,000 - \$25,000 (CDN)**.



Applications for funding through the 2021 Community Organization Investment initiative closed on January 27, 2021. Over **30 applications** were received for consideration.

The review and selection process:



COMMUNITY BENEFITS WORKFORCE IMPLEMENTATION PROGRESS



The Workforce Development and Participation Strategy

- As of September 2020, over 3530 individuals have been oriented to the project with 47% of the orientation participants being local
- Over 90 apprentices or pre-apprentices and have been engaged to work on the project
- Over 120 local businesses have been engaged to provide services or goods to the project
- Co-op students have been hired by WDBA and BNA
- Project team members have participated in job fairs and outreach events
- Updates to BNA opportunities section of the website occurred to provide more information about the project's participating labour unions and Tier One subcontractors

PROJECT JOB OPPORTUNITIES: CANADA

Opportunities with the Project Team

- Positions with WDBA are accessible on the 'Opportunities' of the project website
- BNA hires skilled trades workers → resumes can be sent directly to jobs@bnacagp.com.
- Workforce WindsorEssex created the Bridge Timeline Tool and Bridge Jobs Board which summarizes past and active job postings related to the project in Canada.

Opportunities with Subcontractors

- BNA is working with two major Tier One subcontractors in Canada:
 - Vollmer (Canadian POE Buildings)
 - Sterling Ridge (Canadian POE Earthworks and Concrete Works)

Opportunities with Participating Unions

- LiUNA!625 – the Laborers International Union of North America
- Local 793 – The International Union of Operating Engineers
- Local 700 – The International Association of Bridge, Structural, Ornamental and Reinforcing Ironworkers

PROJECT JOB OPPORTUNITIES: US

Opportunities on the Project Team

BNA hires craft workers → resumes can be sent directly to jobs@bnausjv.com.

Opportunities with Subcontractors

BNA is working with three major Tier One subcontractors in the US:

- Walbridge (US Port of Entry Buildings)
- lafrate (US POE Concrete Works)
- Blaze (US POE Earthworks)

Opportunities with Participating Unions

- MI Regional Council of Carpenters and Millwrights
- Cement Masons - Local Union 514
- Laborers - Local 1191
- Bricklayers - Local Union 1
- Iron Workers - Local Union 25
- Operating Engineers - Local 324
- Painters District Council 1
- Plumbers - Local 98
- Teamsters - Local 247
- International Brotherhood of Electrical Workers IBEW - Local 58
- Pipefitters - Local 636
- Sprinkler Fitters - Local 704

QUESTION AND COMPLAINT PROCESS


The project team is committed to ensuring that communication with the public is maintained during construction so concerns are addressed as quickly as possible. Adjacent residents and businesses will receive notifications of upcoming work, regular progress updates and project contact information

Questions and complaints can be addressed to WDBA through the following:

- Public inquiry line: 1-844-322-1773
- Info@wdbbridge.com

LEARN MORE

 gordiehoweinternationalbridge.com

 1-844-322-1773

 @gordiehowebrg

 @gordiehowebridge

 Gordie Howe Bridge

 @gordiehowebrg

 WDBA-APWD

