



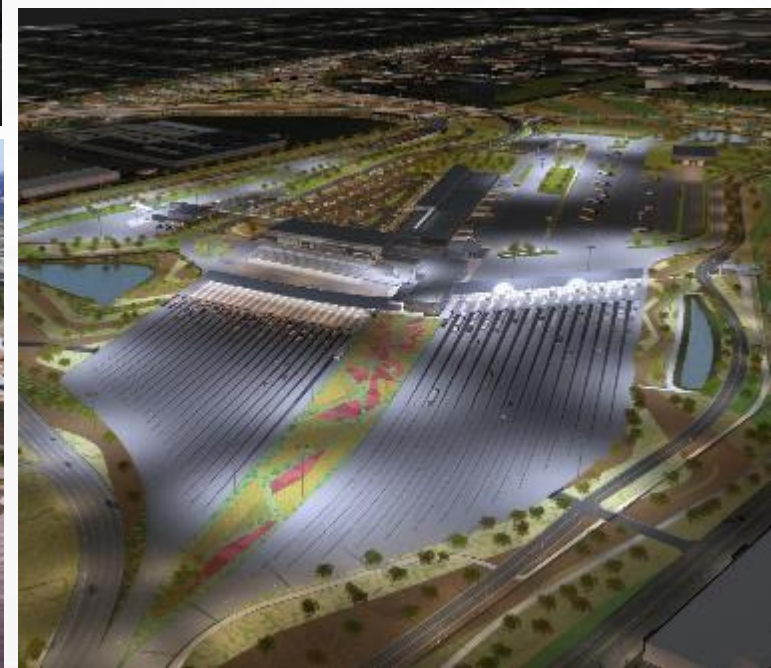
PONT INTERNATIONAL
GORDIE
HOWE
INTERNATIONAL BRIDGE

ONLINE COMMUNITY MEETING

October 7, 2021



PROJECT COMPONENTS



SUSTAINABILITY FEATURES

The Canadian and US Port of Entry facilities are designed to meet LEED v4 Silver rating and the bridge and Michigan Interchange were designed to meet Envision Silver, both of which will ensure longevity while minimizing environmental impact.

KEY FEATURES



LED Lighting

for exterior lighting and in POE buildings



Facilities will be designed to take advantage of **natural light**



Water management systems will be used to **reduce water demand**



Inclusion of cross-border **multi-use path** and **cycling connections**



A **green roof** is being incorporated



Drought tolerant native plants will be used



Installation of **naturalized stormwater management ponds** using native species



A **peregrine falcon box** will be installed on the bridge

LANDSCAPING PLANS

Landscapes of Passage

The Gordie Howe International Bridge project's landscaping masterplan brings continuity between the two Ports of Entry, utilizing a native and non-invasive Carolinian plant palette.

The landscaping theme is “*Landscapes of Passage*” and will emphasize and articulate the movement patterns throughout the site including vehicle acceleration, deceleration, stopping and slower speeds of bicyclists and pedestrians.



Conceptual rendering: US POE Overall Landscape Plan



Conceptual rendering: Canadian POE Overall Landscape Plan

LANDSCAPING DESIGN CONCEPTS

A variety of trees, shrubs, grasses, perennials, aquatic plantings and seed mixes will be organized in a cohesive pattern on the both US and Canadian Ports of Entry, and along the I-75 Corridor.

SEED MIXES	 Pollinator Seed Mix	 Riparian Seed Mix	 Road Side Seed Mix	 Dry Tallgrass Prairie Seed Mix		
	 Aster novae-angliae New England Aster	 Lance-leaved tickseed Coreopsis	 Purple Coneflower Echinacea purpurea	 Wild Cranesbill Geranium maculatum	 Tawny Daylily Hemerocallis fulva	
	 Russian Sage Perovskia atriplicifolia	 Foxglove Penstemon digitalis	 Bethlehem Lungwort Pulmonaria saccharata	 Japanese Spurge Pachysandra terminalis	 Black Eyed Susan Rudbeckia hirta	
	 Smooth Serviceberry Amelanchier laevis	 Autumn Stonecrop Sedum spectabile 'Autumn Joy'	 Bertram Anderson Stonecrop Sedum x 'Bertram Anderson'	 Vera Jameson Stonecrop Sedum 'Vera Jameson'		
PERENNIALS	 Water Plantain Alisma plantago-aquatica	 Swamp Milkweed Asclepias incarnata	 Marsh Marigold Caltha palustris	 Joe Pye Weed Eupatorium maculatum	 Southern Blue Flag Iris virginica	
	 Blue Flag Iris versicolor	 White Water Lily Nymphaea odorata	 Water Smartweed Polygonum amphibium	 Arrowhead Sagittaria latifolia	 Common Cattail Typha latifolia	
	SHRUBS	 Smooth Serviceberry Amelanchier laevis	 New Jersey Tea Ceanothus americanus	 Bebb's Sedge Carex bebbii	 Buttonbush Cephalanthus occidentalis	 Roughleaf dogwood Cornus drummondii
		 Grey Dogwood Cornus racemosa	 Cardinal Red Osier Dogwood Cornus stolonifera	 Burning Bush Euonymus atropurpurea	 Witch-Hazel Hamamelis virginiana	 Spicebush Lindera benzoin
 Shrubby Cinquefoil Potentilla fruticosa		 Ninebark Physocarpus	 Smooth Wild Rose Rosa blanda	 Smooth Sumac Rhus glabra	 Staghorn Sumac Rhus typhina	
 Black Raspberry Rubus occidentalis		 Prairie Rose Rosa setigera	 Snowberry Symphoricarpos	 Pussy Willow Salix discolor	 Shining Willow Salix lucida	
DECIDUOUS TREES	 Allegheny Serviceberry Amelanchier laevis	 Red Maple Acer rubrum	 Silver Maple Acer saccharinum	 Sugar Maple Acer saccharum	 Bitternut Hickory Carya cordiformis	
	 Hackberry Celtis occidentalis	 Wild Plum Prunus americana	 Balsam Poplar Populus balsamifera	 Canada Plum Prunus nigra	 Sycamore Platanus occidentalis	
	 Black Cherry Prunus serotina	 White Oak Quercus alba	 Burr Oak Quercus macrocarpa	 Pin Oak Quercus palustris	 Red Oak Quercus rubra	
	 Black Oak Quercus nigra	 Ivory Silk Tree Lilac Syringa reticulata 'Ivory Silk'	 Basswood Tilia americana	 White Elm Ulmus americana		
CONIFEROUS TREES	 White Fir Abies concolor	 Red Cedar Juniperus virginiana	 White Spruce Picea glauca	 Eastern White Cedar Thuja occidentalis		

LANDSCAPING PLANS: CANADIAN PORT OF ENTRY

Native vegetation, including the restoration of a Carolinian landscape, to limit irrigation requirements. The vegetation will support the protection and expansion of adjacent natural areas.

It will also enhance the drainage and stormwater management system of the site by increasing opportunities for infiltration and reduction of surface runoff, riparian edge and wetland vegetation, grasses, wildflowers and high-branching trees.

Approximately 1,100 trees will be planted throughout the Canadian Port of Entry.



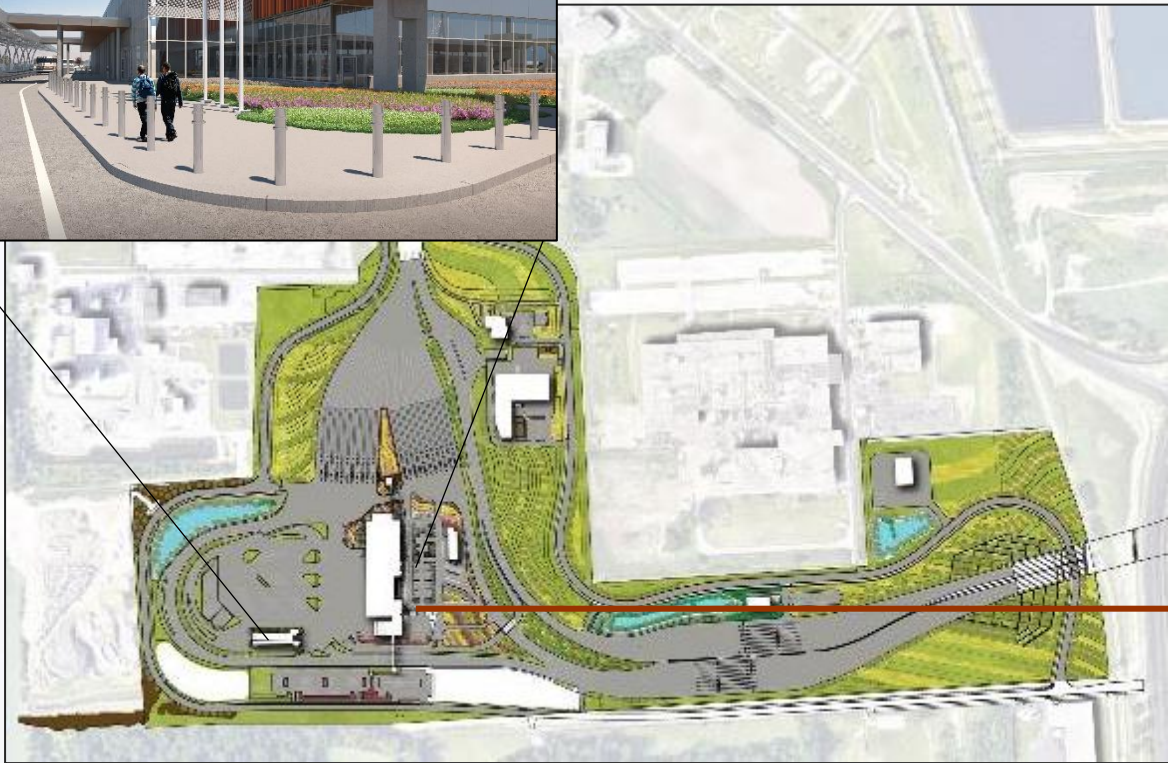
LANDSCAPING PLANS: CANADIAN PORT OF ENTRY

The **East Gateway** has been identified as an enhanced zone at the Canadian Port of Entry:

- Landscaping will be arranged in linear forms to evoke French settlement and agricultural patterns from early settlements in Upper and Lower Canada, including hard landscape materials, like limestone armour stone.
- Corten steel will be used to divide mass plantings.
- An integrated entry feature sign also will be incorporated into the landscape pattern as you enter from the Rt. Hon. Herb Gray Parkway.
- Lighting will be integrated to highlight the deciduous trees and signage.



LANDSCAPING PLANS: CANADIAN PORT OF ENTRY



Perimeter and roadway landscaping

High-traffic areas along the perimeter of the multi-use path and roadways will have tall grasses, seed mixes, trees and shrubs that are salt-tolerant and low maintenance.

Employee, parking and building area landscaping

Slow traffic areas will have mixed ornamentals, herbaceous perennials and deciduous and coniferous trees.

LANDSCAPING PLANS: CANADIAN PORT OF ENTRY

Primary spine (median)

A wide median that is highly visible for inbound and outbound traffic will feature a layered and multi-textural landscape of mixed ornamentals and herbaceous perennials.

Pollinator seed mixes

Pollinator seed mixes will be placed throughout both Ports of Entry to help pollinator populations (bees, butterflies and hummingbirds) by providing nectar-rich flowers.



LANDSCAPING PLANS: CANADIAN PORT OF ENTRY



Stormwater landscaping

Use of drought-resistant plants that help filter rainwater will be placed in areas moving water towards stormwater drains.



LANDSCAPING PLANS: US PORT OF ENTRY

Landscape plans will help with stormwater management, slope stabilization and have low maintenance requirements.

Low-maintenance native plant species that are salt-tolerant will be used near pavements and groundcover plants and materials will be selected for a variety of colour and texture and to provide seasonal interest.

Approximately 560 trees will be planted throughout the Port of Entry, with landscaping continuing on the I-75.



LANDSCAPING PLANS: US PORT OF ENTRY

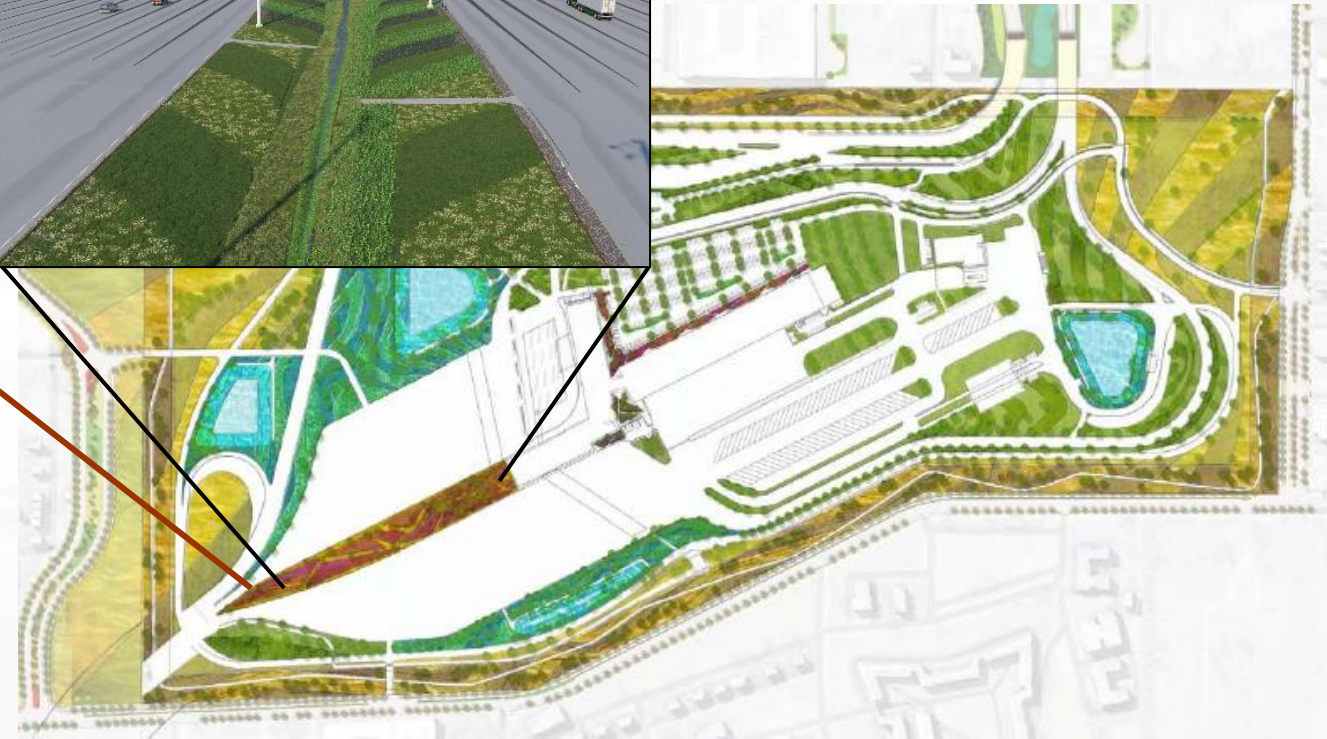
Primary spine landscaping

A wide median highly visible for inbound and outbound traffic will use mixed ornamentals and herbaceous perennials to provide a layered and multi-textural landscape.



Perimeter and roadway landscaping

High-traffic areas along the perimeter of the multi-use path, West Jefferson Avenue and roadways, will have tall grasses, seed mixes, trees and shrubs that are salt-tolerant and low maintenance.



LANDSCAPING PLANS: US PORT OF ENTRY



Employee, parking and building area landscaping

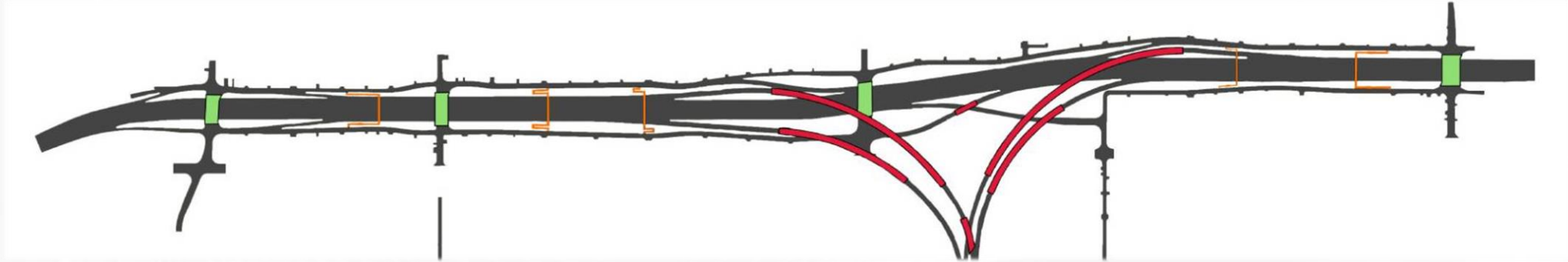
Slow traffic areas will have mixed ornamentals, herbaceous perennials and deciduous and coniferous trees.



Stormwater landscaping

Plants that help filter rainwater and are drought resistant, will be used and placed in areas where they can assist with filtering and moving water towards stormwater drains, which are released into the Detroit River.

LANDSCAPING PLANS: MICHIGAN INTERCHANGE



Landscaping along the I-75 Corridor includes the areas adjacent to the freeway, the connector ramps and the two service drives.

The Corridor runs from Witt Street in the west to just east of Clark Street in the east.

Landscaping along the I-75 will include a blend of deciduous trees, evergreens, ornamental trees, shrubs and grass mixes.

Landscaping also include pollinator mixes in areas identified as pollinator habitats for bees and butterflies.



LANDSCAPING PLANS: MICHIGAN INTERCHANGE

Approximately 1,500 trees will be planted along the I-75 Corridor.

About 240 trees will be planted on the north side of the service drive and about 172 trees will be planted along the south side of the service drive.

The remaining trees will be planted on local roads as part of the project's local road improvement plans, and along the outside (street side) of the Jefferson Avenue barrier wall.



LANDSCAPING PLANS: MICHIGAN INTERCHANGE

Pedestrian and road bridges crossing I-75 will have concrete planters to create barriers between sidewalks, bike paths and roadways.

Planters will be made up of colourful shrubs, tall grasses and herbaceous plants.

Responsibility of these plantings will transfer to the City of Detroit upon completion of construction.



CONSTRUCTION UPDATE: CANADIAN BRIDGE SITE



Canadian bridge tower work



Canadian bridge back span tower work

CONSTRUCTION UPDATE: US BRIDGE SITE



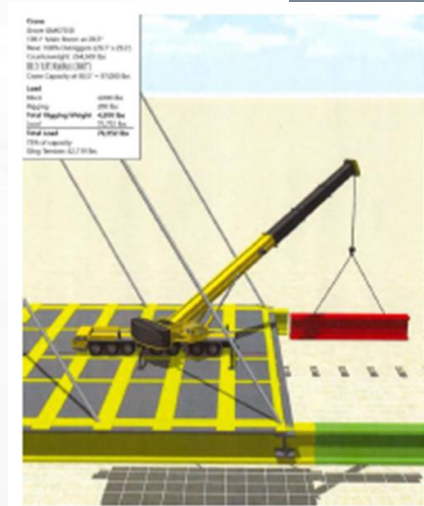
US bridge tower work



US bridge back span work

OVERALL BRIDGE CONSTRUCTION APPROACH

- Erecting from land
- Unbalanced cantilever system; stick build
- Build back span using temporary towers while main concrete towers are being constructed
- Main span will be constructed with the pieces transported from the back span/bridge approach



CONSTRUCTION UPDATE: CANADIAN POE



Canadian POE building construction



Canadian POE building construction

CONSTRUCTION UPDATE: US POE



US POE earthworks



US POE wick drain installation

CONSTRUCTION UPDATE: MI INTERCHANGE

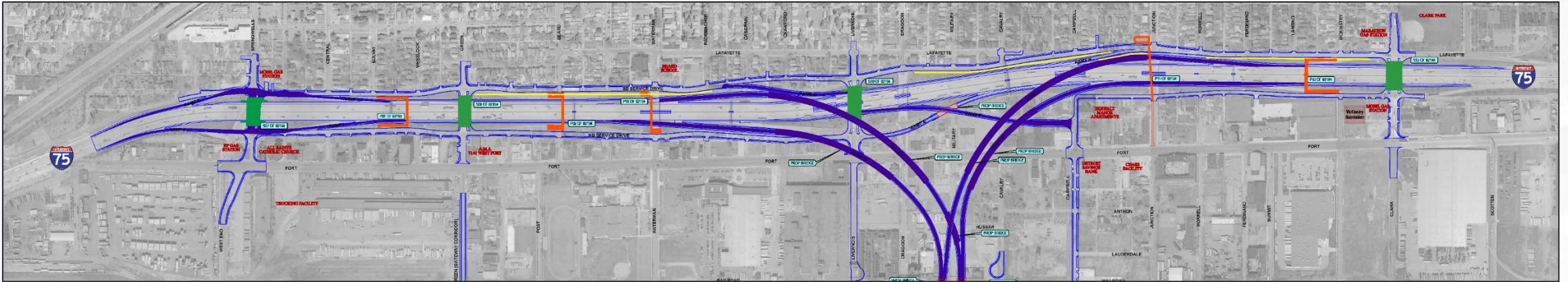


MI Interchange road bridge construction



Cavalry siphon construction

FUTURE I-75 CONFIGURATION



The future configuration of this area includes the following:

Road Bridges ■

Road bridges carrying vehicular traffic over I-75 will be reconstructed at:

- Springwells Street
- Green Street
- Livernois Avenue (two-way traffic)
- Clark Street

Access Ramps ■

North and southbound I-75 ramps will be accessible as follows:

Northbound Exit Ramps:

- Springwells Street
- I-75 exit to US POE (**new**)
- Campbell Street (**new**)
- US POE exit to I-75 (**new**)

Northbound Entrance Ramps:

- Springwells Street
- Livernois Avenue
- Clark Street

Southbound Exit Ramps:

- Clark Street
- I-75 exit to US POE (**new**)
- US POE exit to I-75 (**new**)
- Waterman Street (**new**)
- Springwells Street

Southbound Entrance Ramps:

- Springwells Street
- Junction Street



RAMP CONSTRUCTION TO US POE



SANDWICH STREET RECONSTRUCTION UPDATE

- BNA detailed design work is underway and is anticipated to be completed by the end of 2021.
- Construction timelines:
 - City of Windsor sewer relining work will continue to the end of 2021.
 - Enwin water line replacement, overhead hydro pole relocations and BNA road and sidewalk reconstruction will follow.
- Archaeological Assessment work is underway
- Communications will be issued to advise of traffic impacts as needed.
- Further consultation and communications will be undertaken as the design and construction planning advances.



CONSTRUCTION MITIGATION

Measures are being taken to minimize the impact of construction in accordance with the commitments in the approved Environmental Assessment Report and Federal Screening Report in Canada and the Environmental Impact Statement in the US. These include:

Dust control

- periodic watering or stabilization of disturbed and exposed soils
- limit speed of vehicular traffic
- use water sprays during loading/unloading of materials
- sweep or water flush entrances to construction zones
- installation of monitoring stations at the perimeter of construction areas.

Noise

- ensure all construction equipment is in good repair, fitted with functioning mufflers and complies with noise emission standards
- maximize the distance between the construction staging areas and nearby receptors
- provide regular updates to nearby residents and businesses on possible activities that will affect them
- conduct ongoing noise monitoring in the vicinity of construction.

COMMUNITY BENEFITS PLAN



The Workforce Development and Participation Strategy is geared toward engaging businesses and focuses on supporting workforce, training and pre-apprenticeship/apprenticeship opportunities.



The Neighbourhood Infrastructure Strategy focuses on collaborating with stakeholders and community members through consultation to develop a community investment strategy based on identified priorities.

US Bridge Site

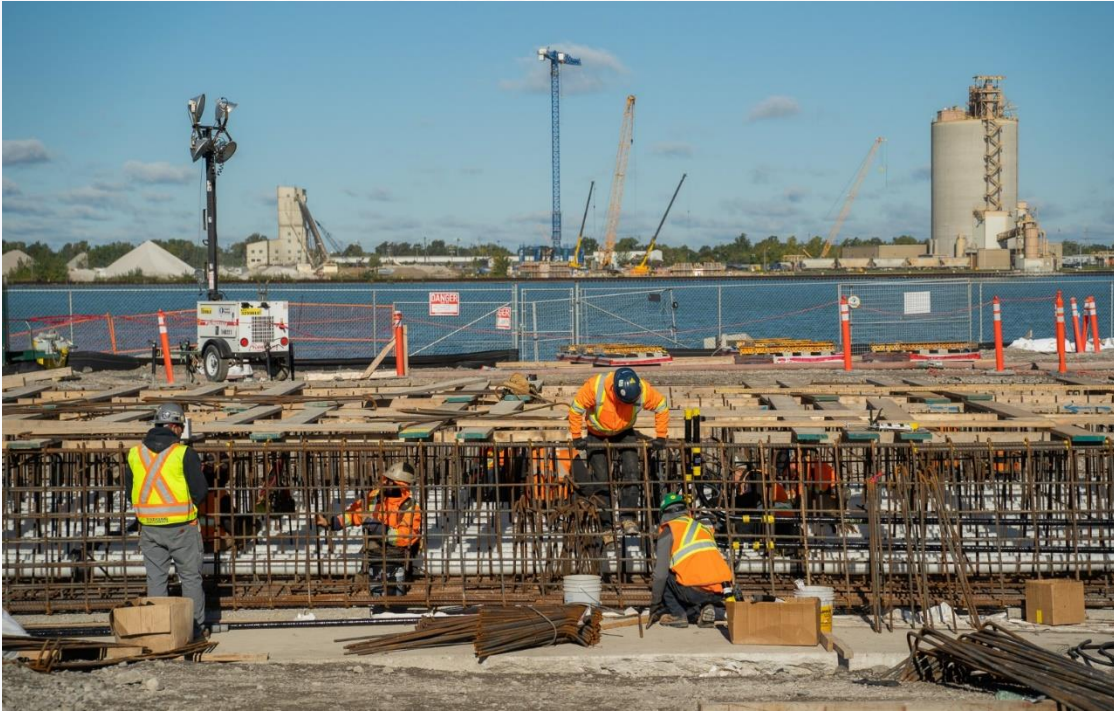
NEIGHBOURHOOD INFRASTRUCTURE STRATEGY

Activity Updates

- Launch of the 2022 Community Organization Investment initiative in November 2021.
- Sandwich Business Development Program and Southwest Detroit Bridge to Prosperity Program.
- Delray Home Improvement Program.
- Construction of an observation area in Belanger Park in River Rouge.
- Behind-the-scenes work to deliver the observation area in Malden Park, Windsor trail connection, \$1M Sandwich Street Enhancements, investments into cycling infrastructure in Detroit.
- Volunteer tree planting with ERCA.



COMMUNITY BENEFITS WORKFORCE IMPLEMENTATION PROGRESS



- As of June 30, 2021, over 4,907 individuals have been oriented to the project with 45 per cent of the orientation participants being local.
- Over 128 apprentices or pre-apprentices and have been engaged to work on the project.
- 130+ Co-op students have been hired by WDBA and BNA.
- Over 184 local businesses have been engaged to provide services or goods to the project.

COMMUNITY BENEFITS WORKFORCE IMPLEMENTATION PROGRESS

The project team continues to work with participating unions and local workforce organizations to advance community benefits commitments.

Interested in being part of history?

Learn how to **apply for jobs** by visiting **[gordiehoweinternationalbridge.com](https://www.gordiehoweinternationalbridge.com)** for job postings and step-by-step video guides.



COMMUNITY BENEFITS REPORTING

PUBLICATION OF THE 2020-2021 YEAR-IN-REVIEW REPORT:



www.GordieHoweInternationalBridge.com



NEIGHBOURHOOD INFRASTRUCTURE STRATEGY

The Neighbourhood Infrastructure Strategy includes \$20 million in direct community investments for Sandwich/west Windsor and Delray/Southwest Detroit, consistent with the key regional priorities identified through public consultation.

All investments relating to Community Benefits are noted in Canadian funds.

\$20 million in direct community investments to be spent over five years



Allocated Funds: \$13,771,101
Unallocated Funds: \$5,099,500
Funds Disbursed: \$1,129,399
 (as of March 31, 2021)

Community Investments as of March 31, 2021:

\$161,823 Community Safety and Connections

\$240,167 Economic Benefits

\$277,409 Community Partnerships

\$450,000 Aesthetics and Landscaping

Over \$1.1 million spent on community-identified priorities

COMMUNITY SAFETY AND CONNECTIONS: \$161,823



TRANSPORTATION IMPROVEMENTS

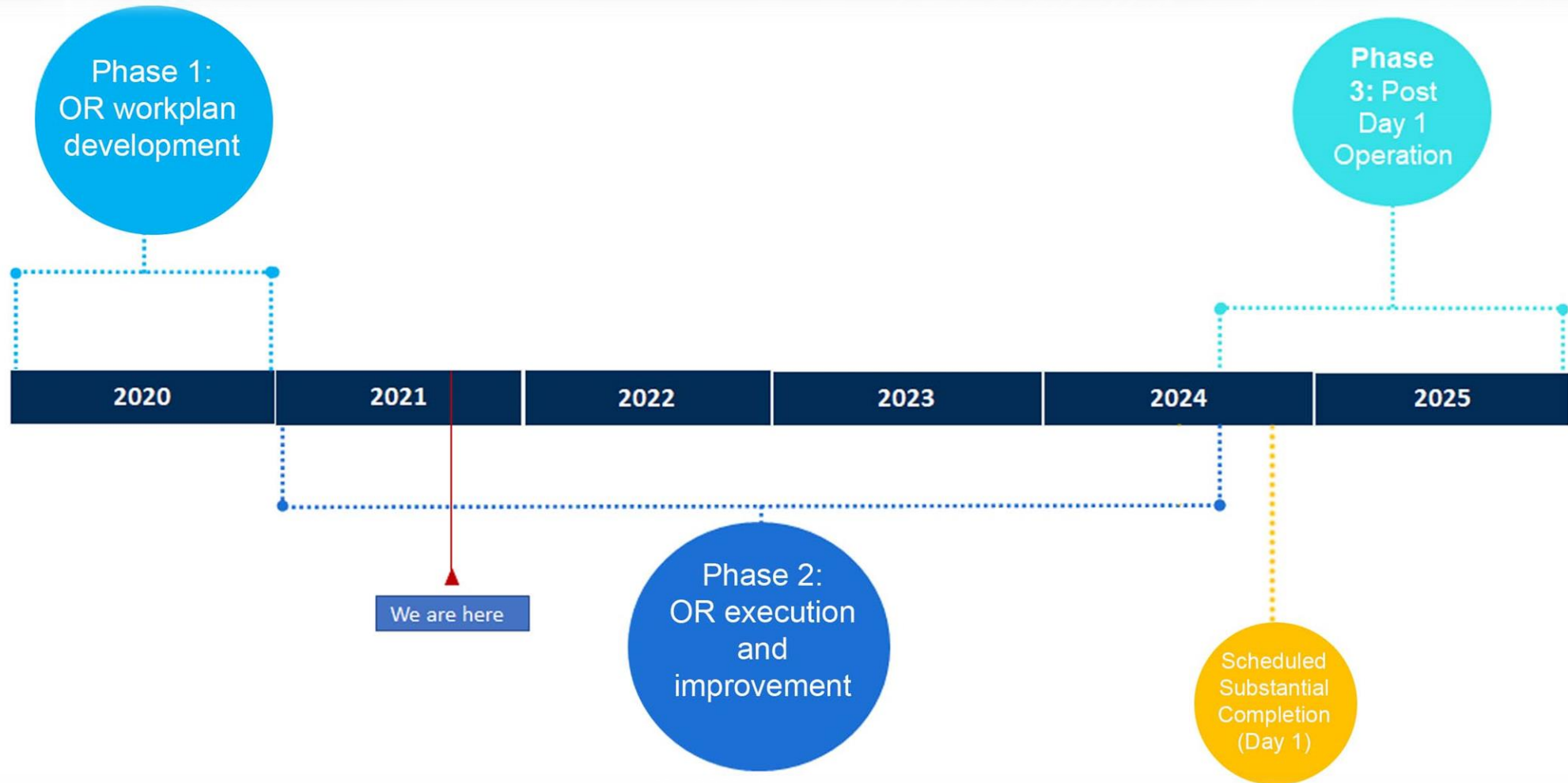
Community consultation identified the need for transportation improvements for Delray and Southwest Detroit residents to conveniently and safely access key services in the community. Three fifteen-passenger vans were donated to organizations serving the Delray and Southwest Detroit communities.

“CHASS deploys the passenger van provided by the Gordie Howe International Bridge project to transport patients to and from their appointments at CHASS and/or specialty care appointments at Henry Ford Health System. Delivery of the van enabled the organization to double the number of zip codes within which the service was offered.”

Denise Pike, CHASS Development Director



PREPARING FOR OPENING DAY: OPERATIONAL READINESS



QUESTION AND COMPLAINT PROCESS

The project team is committed to ensuring that communication with the public is maintained during construction so concerns are addressed as quickly as possible. Adjacent residents and businesses will receive notifications of upcoming work, regular progress updates and project contact information.

Questions and complaints can be addressed to WDBA through the following:

- Public inquiry line: 1-844-322-1773
- Info@wdbbridge.com

LEARN MORE

 gordiehoweinternationalbridge.com

 1-844-322-1773

 @gordiehowebrg

 @gordiehowebridge

 Gordie Howe Bridge

 @gordiehowebrg

 WDBA-APWD

