



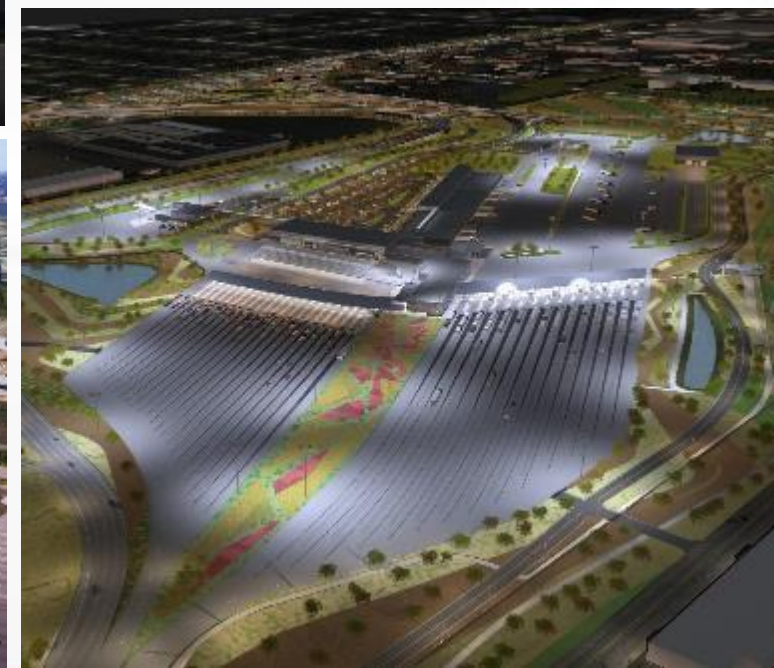
PONT INTERNATIONAL
GORDIE
HOWE
INTERNATIONAL BRIDGE

ONLINE COMMUNITY MEETING

December 8, 2021



PROJECT COMPONENTS



NEW BOARD CHAIR

- On Monday, the Government of Canada announced Tim Murphy as the new Chair of WDBA's Board of Directors.
- Mr. Murphy is an experienced infrastructure lawyer, company director and law firm manager with extensive experience in government and has advised clients in more than 100 infrastructure projects in Canada.
- The Board of Directors plays an important role for the project. They are responsible for overseeing the business activities and other affairs of WDBA as we continue to advance progress on the Gordie Howe International Bridge project.



SUSTAINABILITY FEATURES

The Canadian and US Port of Entry facilities are designed to meet LEED v4 Silver rating and the bridge and Michigan Interchange were designed to meet Envision Silver, both of which will ensure longevity while minimizing environmental impact.

KEY FEATURES



LED Lighting

for exterior lighting and in POE buildings



Facilities will be designed to take advantage of **natural light**



Water management systems will be used to **reduce water demand**



Inclusion of cross-border **multi-use path** and **cycling connections**



A **green roof** is being incorporated



Drought tolerant native plants will be used



Installation of **naturalized stormwater management ponds** using native species



A **peregrine falcon box** will be installed on the bridge

ENVISION AWARD

- The project team has earned a prestigious **Envision™ Platinum Award** for the Gordie Howe International Bridge project.
- This award recognizes efforts to achieve sustainable development and environmental performance standards at every stage of an infrastructure project.
- This certification is the highest possible distinction from the Institute for Sustainable Infrastructure (ISI) .



CONSTRUCTION UPDATE: CANADIAN BRIDGE SITE

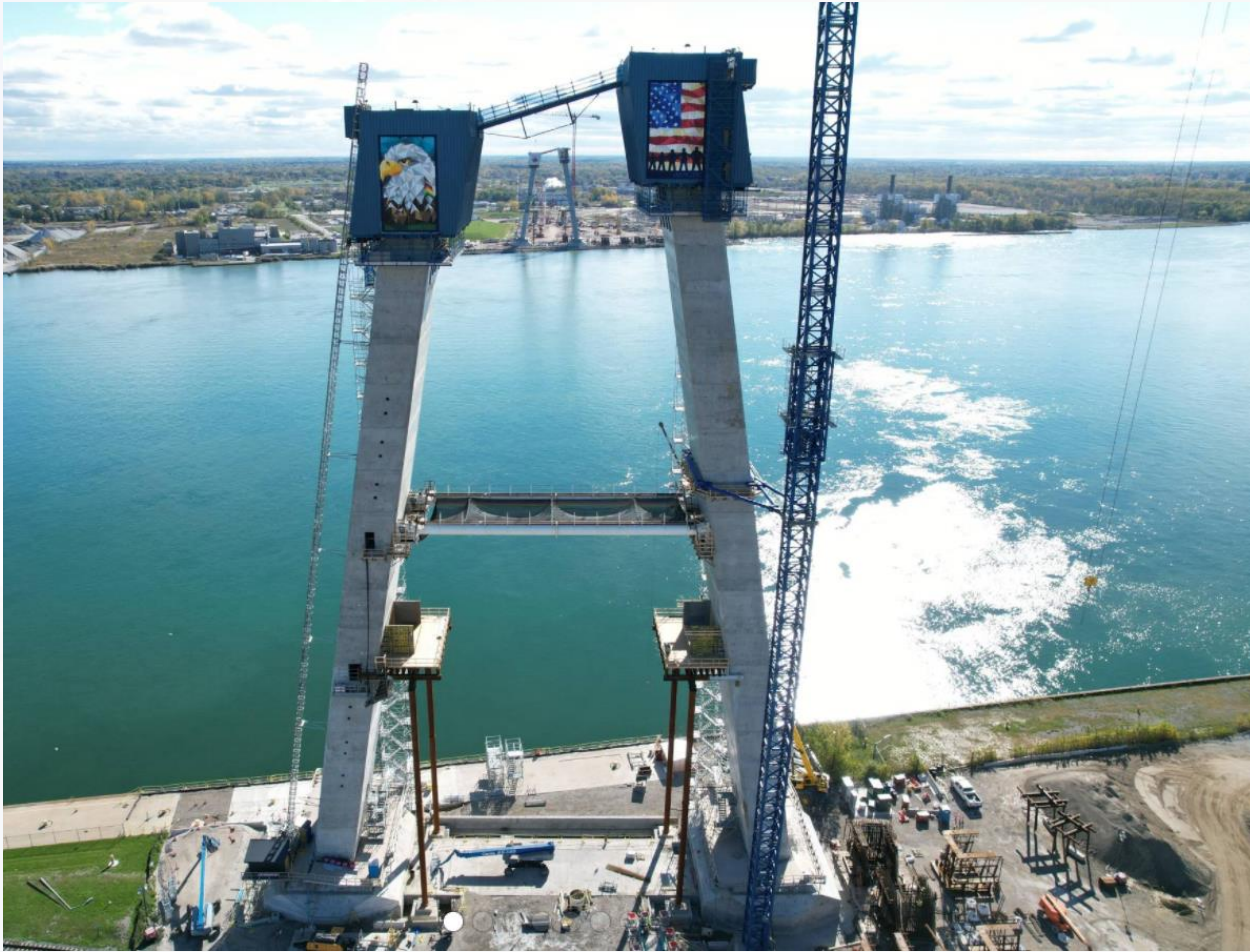


Canadian bridge tower work

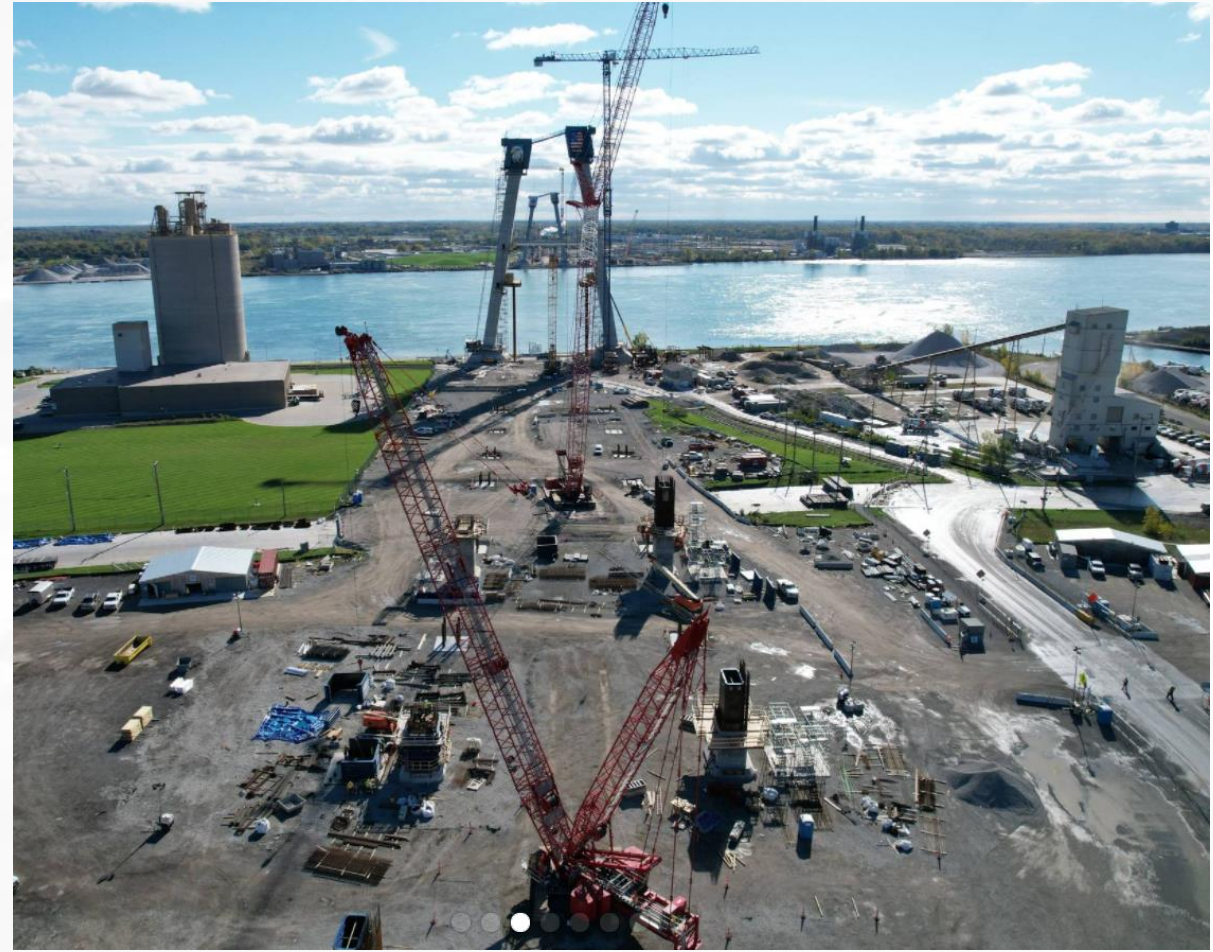


Canadian bridge back span tower work

CONSTRUCTION UPDATE: US BRIDGE SITE



US bridge tower work



US bridge back span work

CONSTRUCTION UPDATE: CANADIAN POE

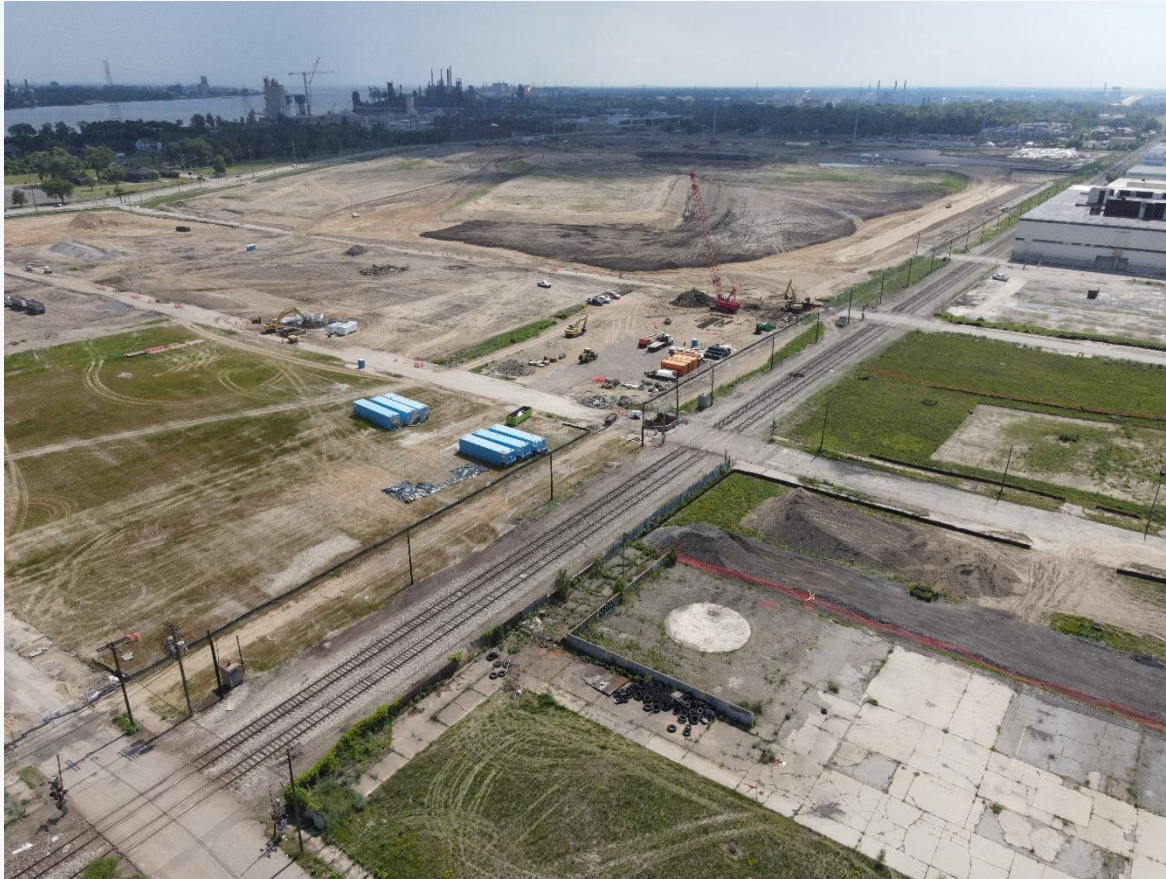


Canadian POE Maintenance Building construction



Canadian POE Main Building construction

CONSTRUCTION UPDATE: US POE

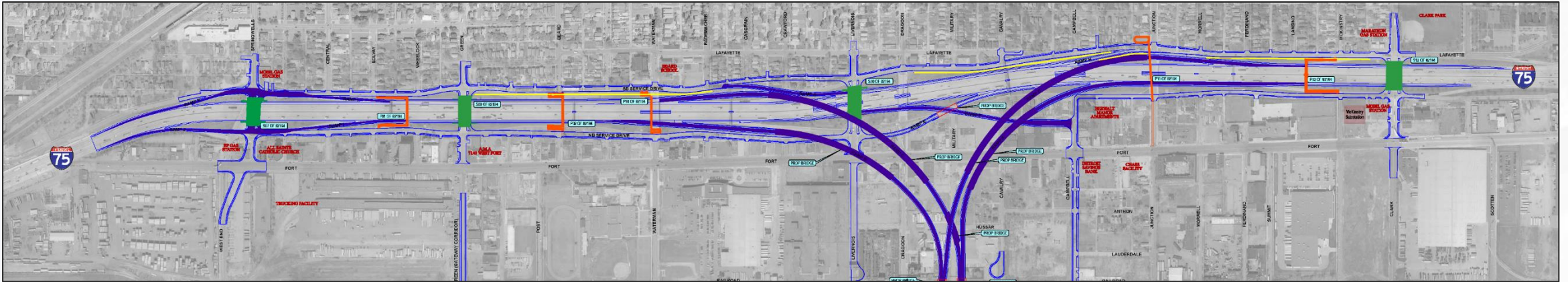


US POE earthworks



US POE wick drain installation

CONSTRUCTION UPDATE: MICHIGAN INTERCHANGE (I-75)



The future configuration of this area includes the following:

Road Bridges

Road bridges carrying vehicular traffic over I-75 will be reconstructed at:

- Springwells Street
- Green Street
- Livernois Avenue (two-way traffic)
- Clark Street

Access Ramps

North and southbound I-75 ramps will be accessible as follows:

Northbound Exit Ramps:

- Springwells Street
- I-75 exit to US POE (**new**)
- Campbell Street (**new**)
- US POE exit to I-75 (**new**)

Northbound Entrance Ramps:

- Springwells Street
- Livernois Avenue
- Clark Street

Southbound Exit Ramps:

- Clark Street
- I-75 exit to US POE (**new**)
- US POE exit to I-75 (**new**)
- Waterman Street (**new**)
- Springwells Street

Southbound Entrance Ramps:

- Springwells Street
- Junction Street



REVIEW OF PHASE ONE I-75 WORK

- Demolition and reconstruction of the road bridges at Springwells Street, Livernois Avenue and Clark Street
- Preparation of the service drives for the construction of new on and off-ramps to the Port of Entry, and the I-75 ramps at Springwells Street, Clark Street and West Vernor Highway
- Construction of a new pedestrian bridge at Solvay Street
- Access across I-75 has been available via Green Street, Waterman Street, Dragoon Street, and Junction Street road bridges

CURRENT PHASE TWO TRAFFIC PATTERNS

- The Service Drives are closed to traffic in both directions, between Springwells Street and Clark Street.
- Livernois Avenue is now open to two-way traffic between Fort Street and Lafayette Street. It will remain one-way north of Lafayette Street.
- The primary detour route for motorists during phase two activities includes the use of the Livernois Street, Springwells Street or Junction Street road bridges to cross over the I-75.
- Travellers wishing to access I-75 northbound or southbound, will be detoured to West Vernor Highway or Fort Street, depending on their directional travel needs until Spring 2023.

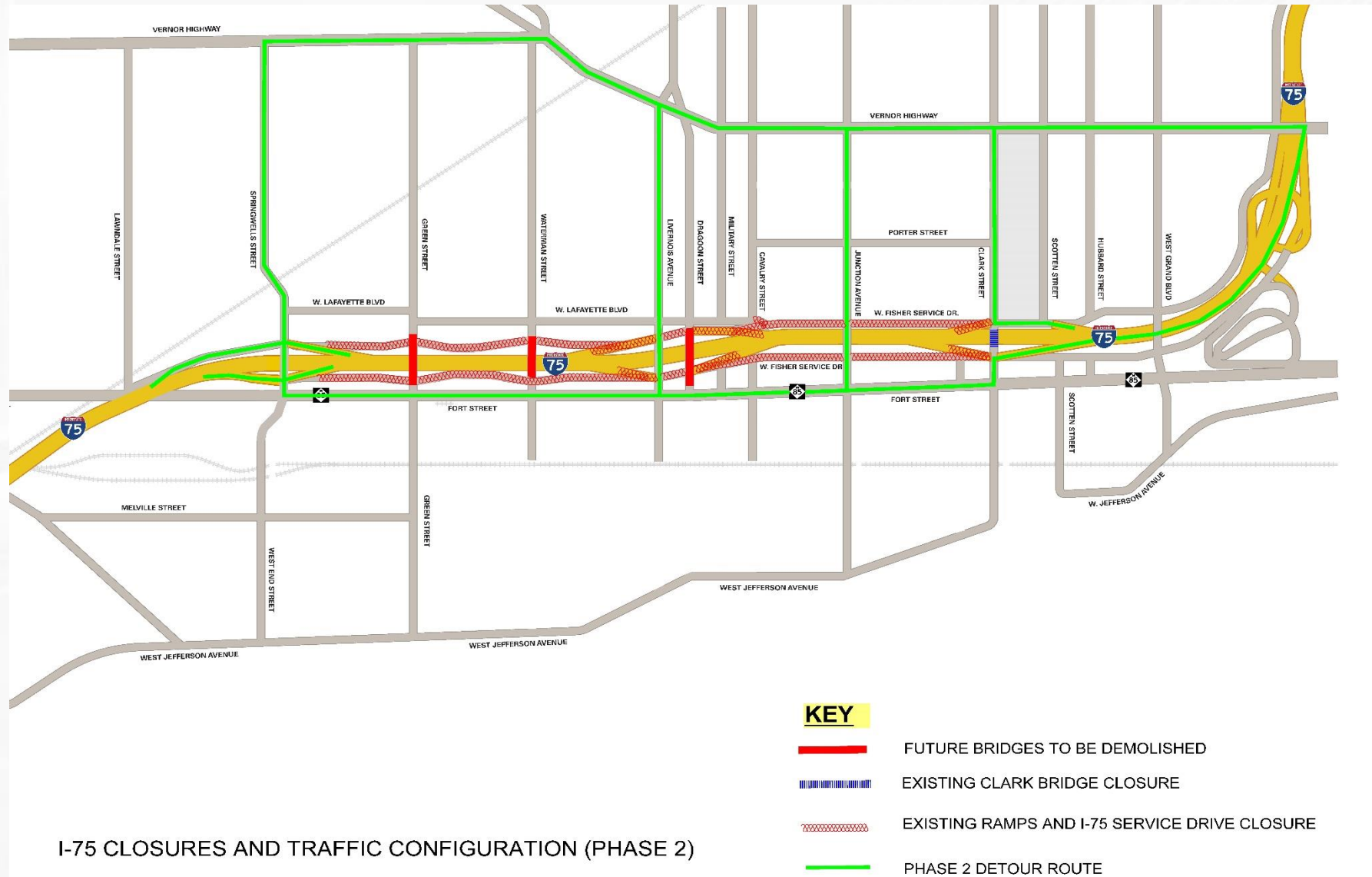
MAJOR PHASE 2 WORK ACTIVITIES

- Livernois Street and Springwells Street road bridges are now open to traffic.
- Clark Street road bridge remains closed to traffic.
- Waterman Street, Dragoon Street and Green Street road bridges are now closed. NOTE: Junction Street road bridge will not close until Clark Street road bridge reopens.
- Demolition of Waterman Street, Dragoon Street, Junction Avenue and Green Street road bridges and Ferdinand Street pedestrian bridge.
- A full weekend closure of MI-75 (northbound and southbound) from Springwells Street to Clark Street will be required for road bridge demolitions.

FULL WEEKEND CLOSURE OF I-75 FOR ROAD BRIDGE DEMOLITIONS: DECEMBER 10-13, 2021

- BNA will temporarily close the I-75 between Springwells Street to Clark Street starting 7 p.m. on Friday, December 10 to 5 a.m. until Monday, December 13 to demolish the Waterman Street, Dragoon Street and Green Street road bridges and Ferdinand Street pedestrian bridge.
- Vernor Highway on-ramp and Ambassador Bridge on-ramp to southbound I-75 will also temporarily close during this time.
- A detour will be in place to route traffic around the I-75 full closure.
- The traveling public should expect delays and is advised to avoid the area if possible

PHASE TWO TRAFFIC MAP



I-75 CLOSURES AND TRAFFIC CONFIGURATION (PHASE 2)

RAMP CONSTRUCTION TO US POE



SANDWICH STREET RECONSTRUCTION UPDATE

- \$12 million investment into reconstructing 3 km of Sandwich Street (between Ojibway Parkway and the Rosedale Avenue roundabout).
- BNA reconstruction design work is underway and anticipated to be completed by the end of this year. Designs will be shared in early 2022.
- Construction will begin in coordination with the City of Windsor's sewer work and Enwin Utilities' watermain work.
- The project's Community Benefits Plan includes \$1 million Sandwich Street enhancements.
- Public consultation will be held in early 2022.



CONSTRUCTION MITIGATION

Measures are being taken to minimize the impact of construction in accordance with the commitments in the approved Environmental Assessment Report and Federal Screening Report in Canada and the Environmental Impact Statement in the US. These include:

Dust control

- periodic watering or stabilization of disturbed and exposed soils
- limit speed of vehicular traffic
- use water sprays during loading/unloading of materials
- sweep or water flush entrances to construction zones
- installation of monitoring stations at the perimeter of construction areas.

Noise

- ensure all construction equipment is in good repair, fitted with functioning mufflers and complies with noise emission standards
- maximize the distance between the construction staging areas and nearby receptors
- provide regular updates to nearby residents and businesses on possible activities that will affect them
- conduct ongoing noise monitoring in the vicinity of construction.

COMMUNITY BENEFITS PLAN



The Workforce Development and Participation Strategy is geared toward engaging businesses and focuses on supporting workforce, training and pre-apprenticeship/apprenticeship opportunities.



The Neighbourhood Infrastructure Strategy focuses on collaborating with stakeholders and community members through consultation to develop a community investment strategy based on identified priorities.

US Bridge Site

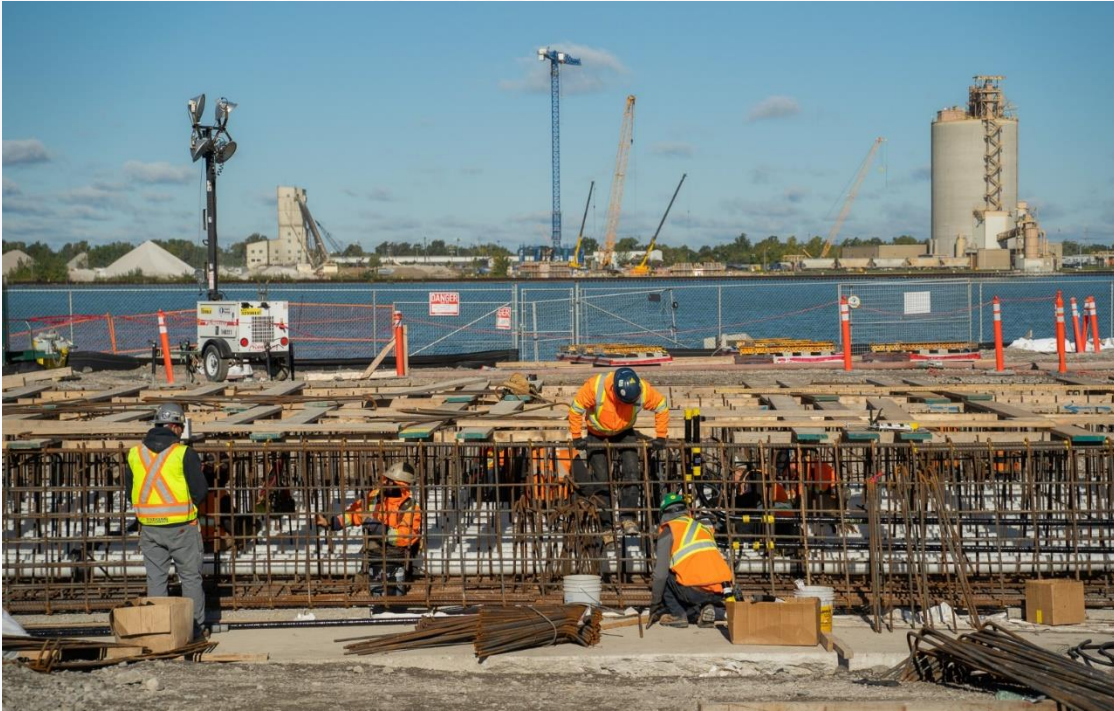
NEIGHBOURHOOD INFRASTRUCTURE STRATEGY

Activity Updates

- Continuation of the Sandwich Business Development Program and Southwest Detroit Bridge to Prosperity Program.
- Delray Home Improvement Program.
- Construction of an observation area in Belanger Park in River Rouge.
- Behind-the-scenes work to progress prepare for public consultation around the \$1M Sandwich Street Enhancements and the release of funding to support McKee Park improvements
- Sandwich community litter pick up event with ERCA in November



COMMUNITY BENEFITS WORKFORCE IMPLEMENTATION PROGRESS



Activity Updates

- As of August 30, 2021, 5,218 individuals have been oriented to the project with 43% of the orientation participants being local to the Windsor-Essex area or City of Detroit
- Over 156 US and 28 Canadian apprentices and pre-apprentices have been engaged
- Over 130 Co-op students have been engaged by WDBA and BNA
- 190 local businesses have been engaged to provide goods or services to the project
- A new workforce video series has been developed
- Semi-annual Trades-Specific Workforce Development Steering Committee meetings continue

COMMUNITY ORGANIZATION INVESTMENT

The Gordie Howe International Bridge team is now accepting applications to be considered for funding through the 2022 Community Organization Investment initiative.

An **annual \$50,000 investment allowance per country** will be made available between 2020 and 2024. Requests for funding can range from **\$1,000 - \$25,000**.

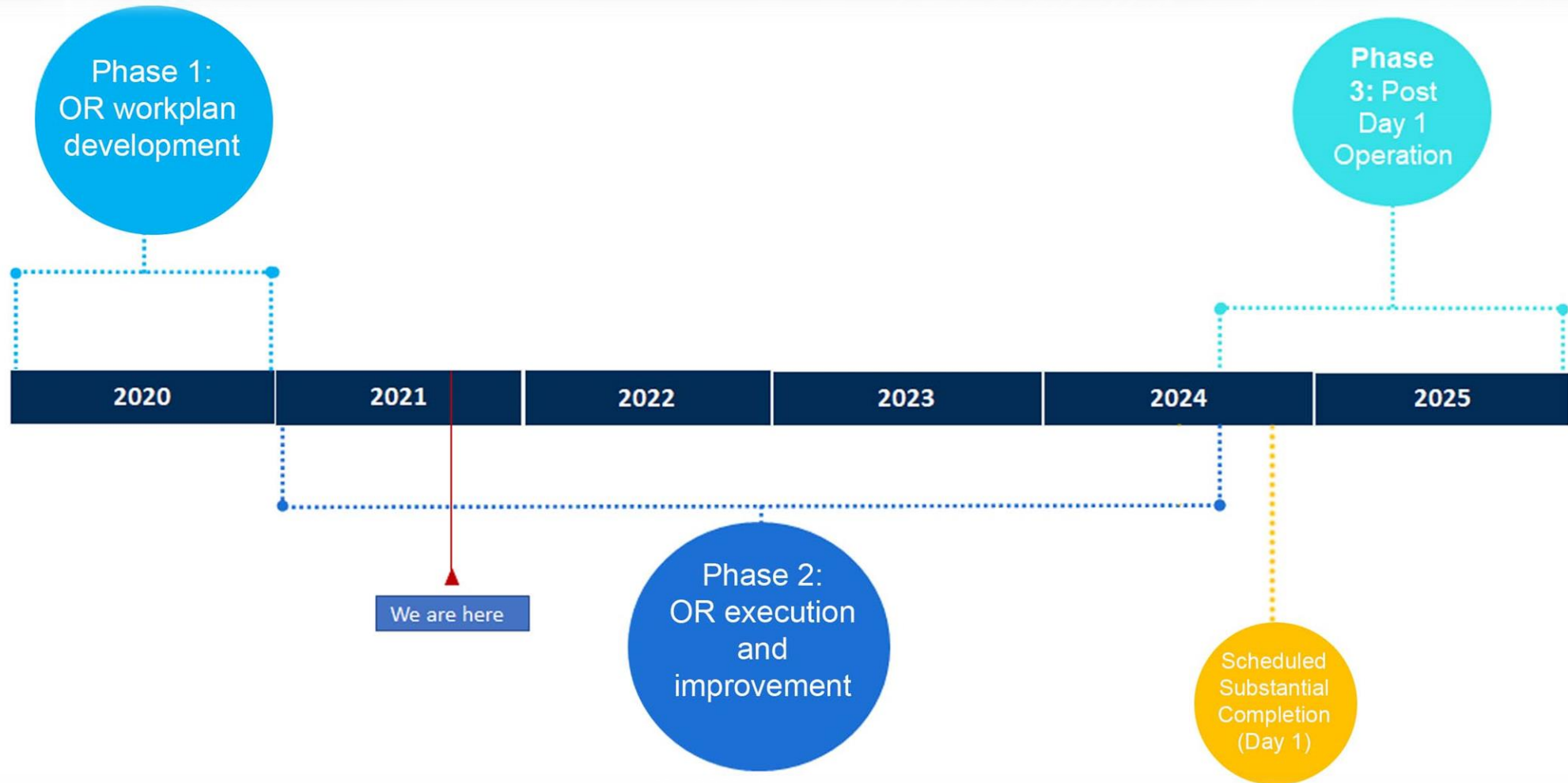
Applications will be considered for funding if:

- The organization(s) applying is **located in or provides services to the host communities** of Sandwich/west Windsor or Delray/Southwest Detroit neighbourhoods
- The requested funding will be invested in **events, programming and infrastructure improvements** that will benefit the host communities
- The applicant is a **registered charity or has a trustee relationship** with a registered charity.



Applications are being accepted until **January 26, 2022**.

PREPARING FOR OPENING DAY: OPERATIONAL READINESS



QUESTION AND COMPLAINT PROCESS

The project team is committed to ensuring that communication with the public is maintained during construction so concerns are addressed as quickly as possible. Adjacent residents and businesses will receive notifications of upcoming work, regular progress updates and project contact information.

Questions and complaints can be addressed to WDBA through the following:

- Public inquiry line: 1-844-322-1773
- Info@wdbbridge.com

LEARN MORE

 gordiehoweinternationalbridge.com

 1-844-322-1773

 @gordiehowebrg

 @gordiehowebridge

 Gordie Howe Bridge

 @gordiehowebrg

 WDBA-APWD

