



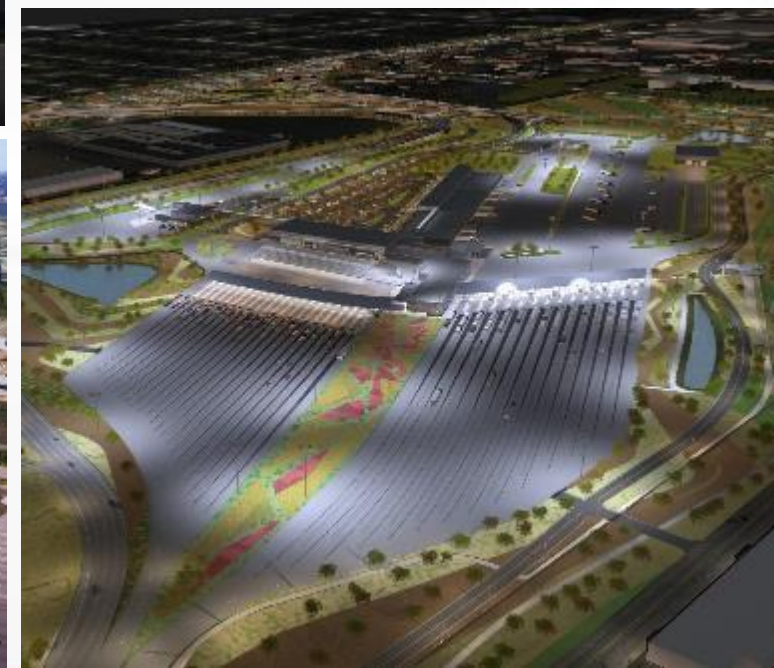
PONT INTERNATIONAL
GORDIE
HOWE
INTERNATIONAL BRIDGE

ONLINE COMMUNITY MEETING

March 9, 2022



PROJECT COMPONENTS



SUSTAINABILITY FEATURES

The bridge and Michigan Interchange are designed to meet the Envision Platinum rating and the Canadian and US Ports of Entry are designed to meet LEED v4 Silver rating. Both certifications will ensure longevity while minimizing environmental impact.

KEY FEATURES



LED Lighting

for exterior lighting and in POE buildings



Facilities will be designed to take advantage of **natural light**



Water management systems will be used to **reduce water demand**



Inclusion of cross-border **multi-use path** and **cycling connections**



A **green roof** is being incorporated



Drought tolerant native plants will be used



Installation of **naturalized stormwater management ponds** using native species

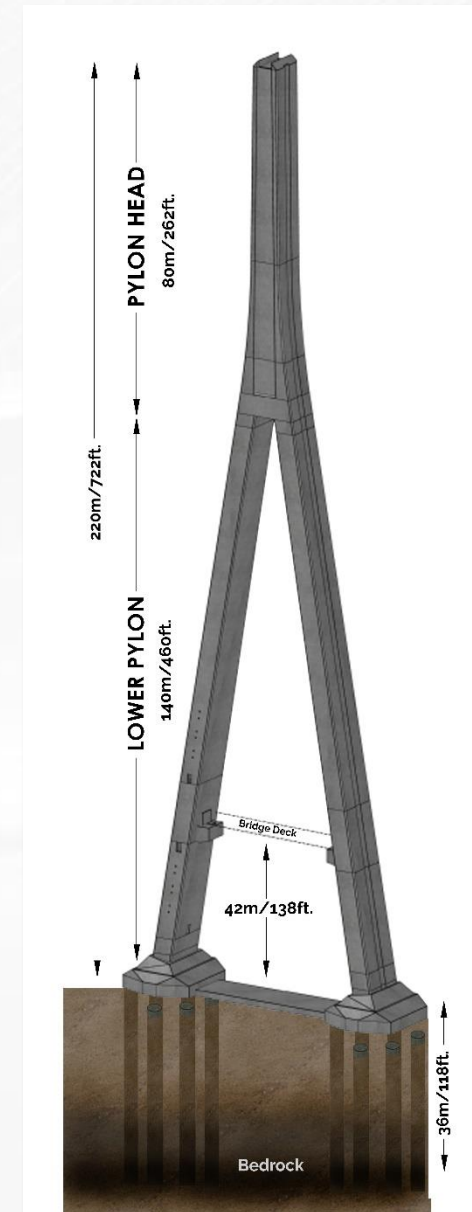


A **peregrine falcon box** will be installed on the bridge

CONSTRUCTION UPDATE: CANADIAN BRIDGE SITE



Canadian bridge tower work



CONSTRUCTION UPDATE: CANADIAN BRIDGE SITE



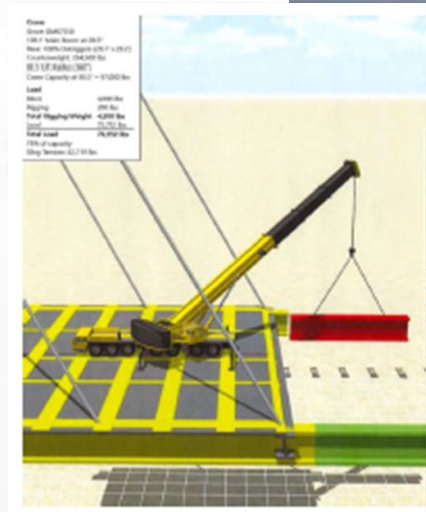
Canadian bridge tower work



Canadian bridge back span work

OVERALL BRIDGE CONSTRUCTION APPROACH

- Erecting from land
- Unbalanced cantilever system; stick build
- Build back span using temporary towers while main concrete towers are being constructed
- Main span will be constructed with the pieces transported from the back span/bridge approach



CONSTRUCTION UPDATE: CANADIAN POE



Canadian POE building construction



Canadian POE construction site

CONSTRUCTION UPDATE: US POE

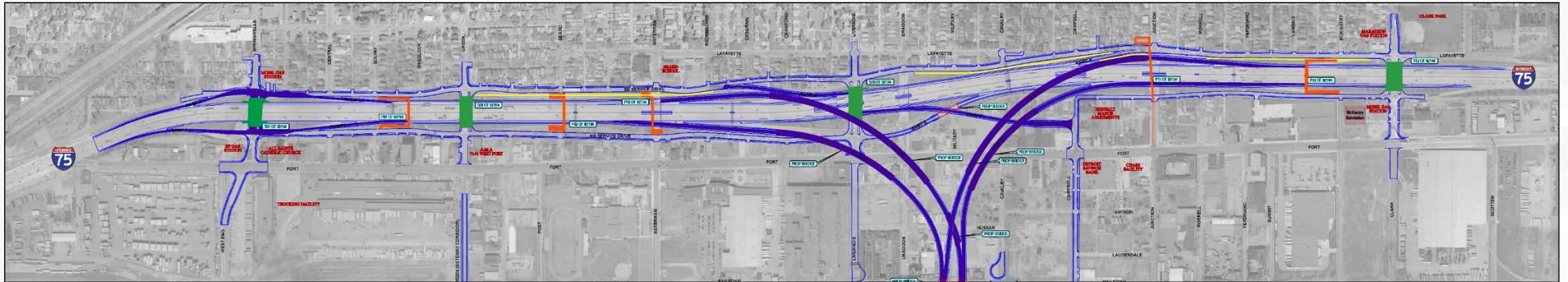


US POE construction site



US POE wick drain installation

CONSTRUCTION UPDATE: MICHIGAN INTERCHANGE (I-75)



The future configuration of this area includes the following:

Road Bridges

Road bridges carrying vehicular traffic over I-75 will be reconstructed at:

- Springwells Street
- Green Street
- Livernois Avenue (two-way traffic)
- Clark Street

Access Ramps

North and southbound I-75 ramps will be accessible as follows:

Northbound Exit Ramps:

- Springwells Street
- I-75 exit to US POE (**new**)
- Campbell Street (**new**)
- US POE exit to I-75 (**new**)

Northbound Entrance Ramps:

- Springwells Street
- Livernois Avenue
- Clark Street

Southbound Exit Ramps:

- Clark Street
- I-75 exit to US POE (**new**)
- US POE exit to I-75 (**new**)
- Waterman Street (**new**)
- Springwells Street

Southbound Entrance Ramps:

- Springwells Street
- Junction Street



SANDWICH STREET RECONSTRUCTION



SANDWICH STREET RECONSTRUCTION

- Three kilometres of Sandwich Street will be reconstructed, from south of the Rosedale Avenue roundabout, past Ojibway Parkway to the former McKee Avenue.



SANDWICH STREET RECONSTRUCTION OVERVIEW

- Removal and replacement of existing road and sidewalks.
- Bicycle lanes and multi-use path.
- Bump-outs at key intersections in the Business Improvement Area.
- Built to meet accessibility standards.
- New underground storm sewer between Ojibway Parkway and McKee Street.
- Where possible, existing healthy trees will remain.



SANDWICH RECONSTRUCTION: WHAT TO EXPECT

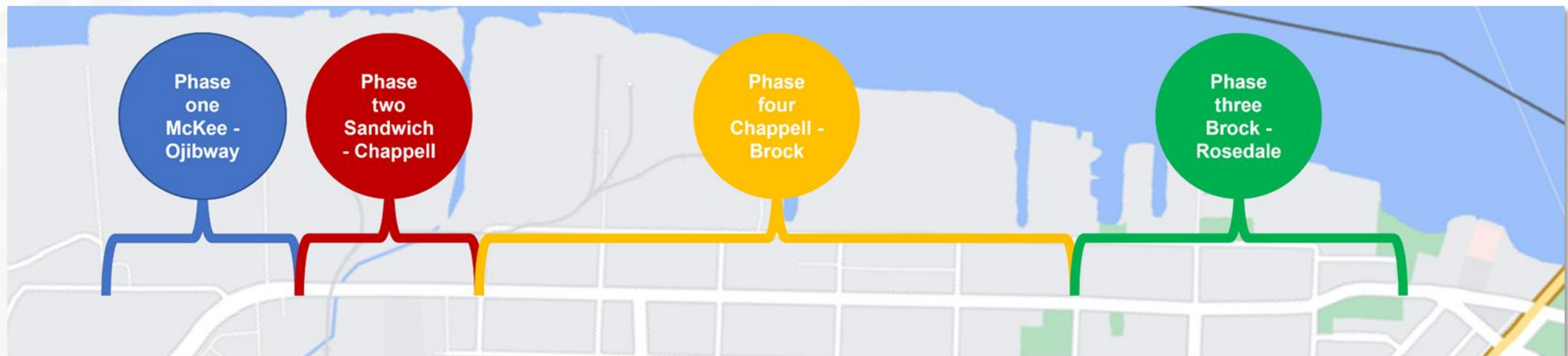
- Construction will be conducted between the hours of 6 a.m. and 8 p.m. daily.
- Sandwich Street will remain open to traffic during construction, although temporary lane closures may be required.
- BNA will remove the roadway and public sidewalks up to the property line.
- Driveway and access to businesses will be maintained.
- BNA will provide construction updates so businesses and residents in advance.



CONSTRUCTION TIMELINES

Sandwich Reconstruction Timelines

- Phase one – Summer 2022: McKee Road to Ojibway Parkway. Roadway, sidewalk, multi-use lanes and storm sewer.
- Phase two – Summer to Winter 2022: Ojibway Parkway to Chappell Street. Roadway, sidewalk, multi-use trail.
- Phase three – 2023: Brock Street south of the Rosedale Avenue roundabout, including the Sandwich Business Improvement Area. Roadway, sidewalks, bicycle lanes.
- Phase four – 2024: Chappell Street to Brock Street. Roadway, sidewalks, bicycle lanes.



CONSTRUCTION MITIGATION

Dust control

- Ongoing particulate monitoring throughout the site.
- Regular road sweeping and watering.
- Use of tarps for material transport.
- Assessment and accommodation of activities during periods of high winds, as needed.

Noise

- During construction the equipment will be well-maintained to reduce noise, vibration and emissions.

Vibration Monitoring

- A vibration monitoring plan will be developed in advance of construction.

COMMUNITY BENEFITS PLAN



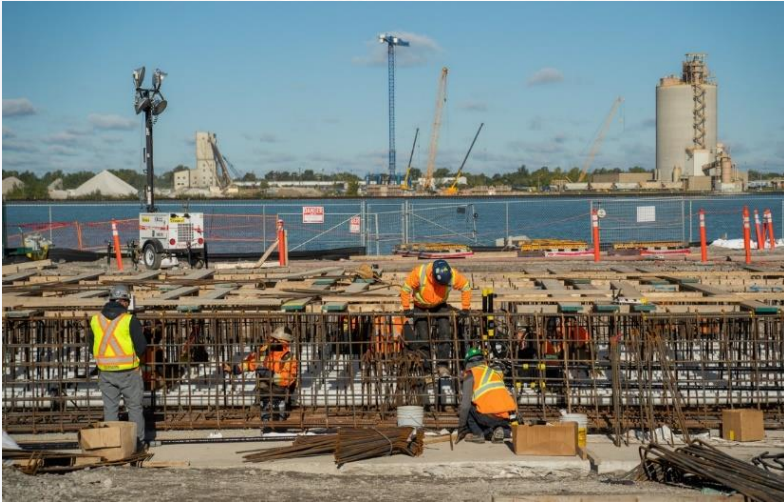
The Workforce Development and Participation Strategy is geared toward engaging businesses and focuses on supporting workforce, training and pre-apprenticeship/apprenticeship opportunities.



The Neighbourhood Infrastructure Strategy focuses on collaborating with stakeholders and community members through consultation to develop a community investment strategy based on identified priorities.

US Bridge Site

COMMUNITY BENEFITS WORKFORCE IMPLEMENTATION PROGRESS



Activity Updates

- As of September 30, 2021, 5,365 individuals have been oriented to the project with 43% local to the Windsor-Essex area or City of Detroit.
- 213 apprentices and pre-apprentices engaged on the project.
- 193 local businesses engaged to provide goods or services to the project.
- Held workforce development information sessions in Canada and the US.
- Windsor Essex Catholic School Board Construction Academy presentation to 33 classrooms and over 700 students.
- As of December 31, 2021, 194 co-operative learning experiences have been provided.

NEIGHBOURHOOD INFRASTRUCTURE STRATEGY

Activity Updates

- 2022 Community Organization Investment
 - Application window closed in January
 - 20 eligible Canadian applications were received
 - Funding will be announced late spring
- Funding released to:
 - City of Windsor for improvements to McKee Park
 - United Way/Centraide in support of the ProsperUS Strategy
 - Year 2 of Sandwich Business Development Program
- Malden Park Observation Area
 - Malden Park Site Approval amendment under review with Ministry of Environment, Conservation and Parks.
- Continuing behind-the-scenes work to deliver the Windsor trail connection and Windsor-Detroit Cross-River Tour.



SANDWICH STREET \$1 MILLION ENHANCEMENTS

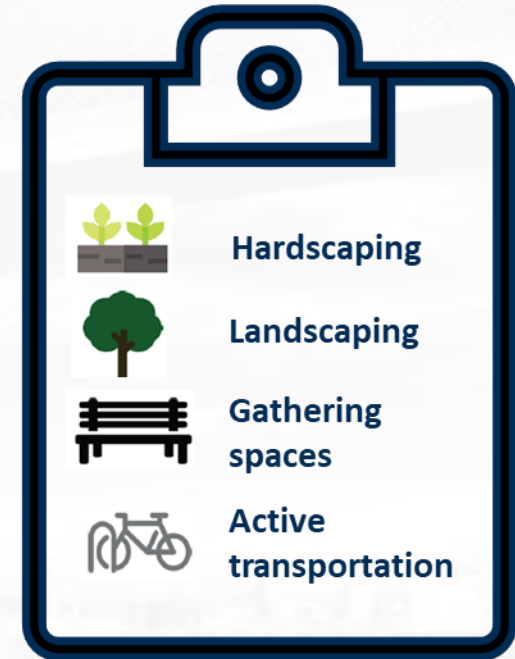


- \$1 million will be invested towards further enhancing the Sandwich Business Improvement Area.
- Part of the project's Community Benefit's Plan, Neighbourhood Infrastructure strategy.
- Received community feedback on what enhancement categories to focus on.
- The team has met with City of Windsor departments for initial feedback.

\$1 MILLION ENHANCEMENT SURVEY

The survey asked respondents to rank four enhancement categories:

- **Hardscaping:** Benches and street furniture
- **Landscaping:** Potted plants or trees, flowering shrubs, planter boxes, tall grasses, or other vegetation
- **Gathering spaces:** Seating areas of tables and benches alone, or in clusters to allow for community interaction
- **Active transportation:** Bike racks, wayfinding signage, or bicycle repair stations

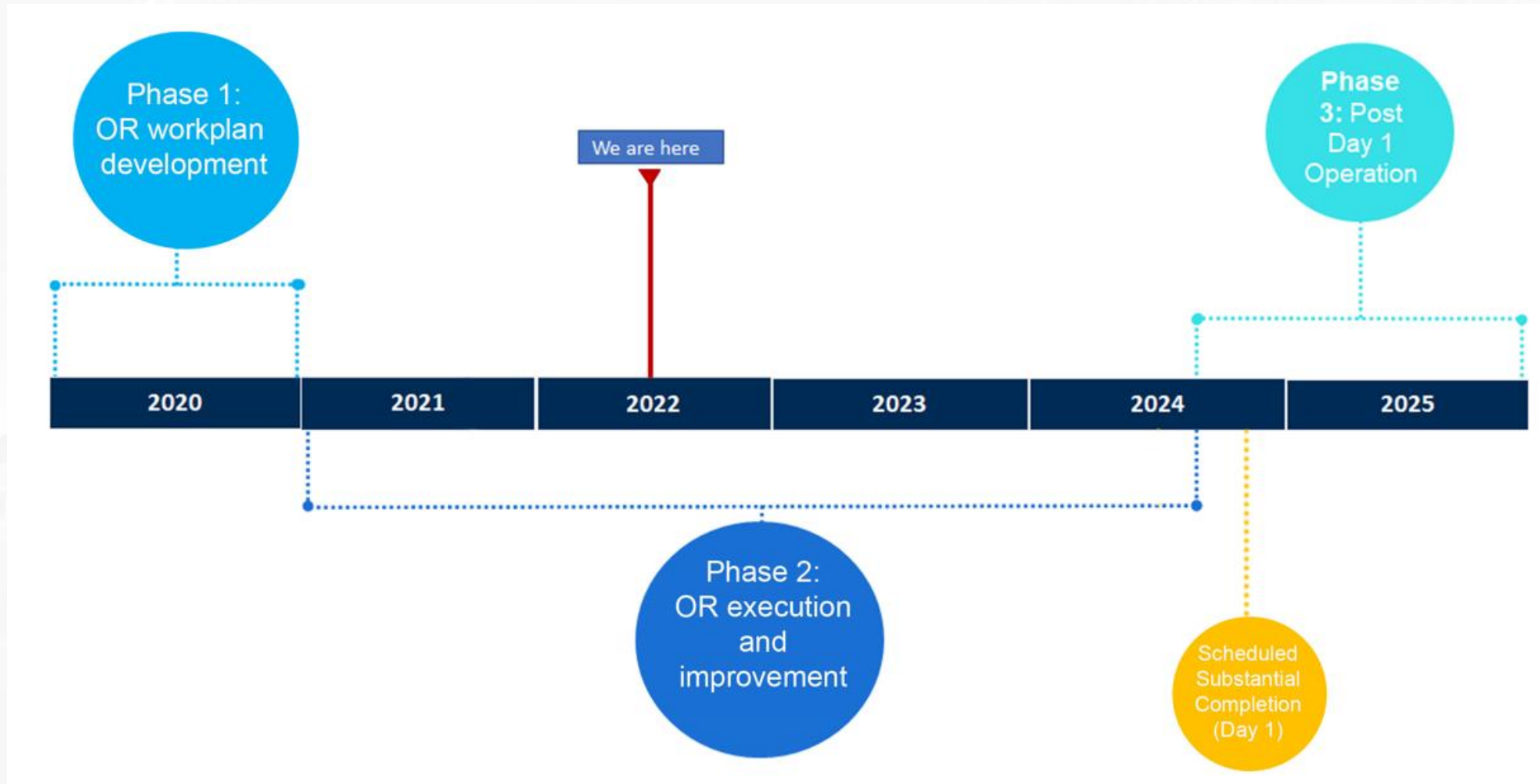


FOLLOWING THE SURVEY: NEXT STEPS



- The project team is reviewing the responses to identify the areas most prioritized by the community.
- While the overall street design will include features from all four investment categories, additional funding will focus on those areas most important to the community.
- The project team will work with the City of Windsor to ensure their approval of designs.
- Designs are anticipated to be publicly shared in summer 2022.
- Construction of the BIA district is anticipated for 2023.

PREPARING FOR OPENING DAY: OPERATIONAL READINESS



QUESTION AND COMPLAINT PROCESS

The project team is committed to ensuring that communication with the public is maintained during construction so concerns are addressed as quickly as possible. Adjacent residents and businesses will receive notifications of upcoming work, regular progress updates and project contact information.

Questions and complaints can be addressed to WDBA through the following:

- Public inquiry line: 1-844-322-1773
- Info@wdbbridge.com

LEARN MORE

 gordiehoweinternationalbridge.com

 1-844-322-1773

 @gordiehowebrg

 @gordiehowebridge

 Gordie Howe Bridge

 @gordiehowebrg

 WDBA-APWD

