

CONSTRUCTION UPDATE: SPRING 2022

PORTS OF ENTRY

CANADIAN PORT OF ENTRY (POE)

At the Canadian POE, the final sand surcharge deposits are taking shape at the north and east ends of the construction site. Throughout 2022, underground utility installations are ongoing across multiple areas of the 53 hectares/130 acre site. Grading and paving is expected to begin later this year.

Nine of 12 POE facilities are currently under construction. Some are in early construction with excavation and foundation work underway while others are receiving roofing, building facade and interior fit-out (floors, ceilings and furnishings) installations. The project team expects to begin construction on the remaining three facilities within the coming months.



Canadian Port of Entry toll booth construction.

The primary inspection lanes and toll booth construction has begun, with excavation and foundation work well underway.



US Port of Entry facility construction.

US PORT OF ENTRY (POE)

Construction activities continue to advance at the US POE. Removal of the surcharge is near completion.

Foundation work continues at some buildings, and at others, steel work and deck roofing has started. Utility installation is also expected to start in the coming months.

Construction traffic is using designated haul routes to minimize community impacts, traffic congestion and wear and tear on existing infrastructure while maximizing public and construction safety. Construction traffic is

respecting restrictions on truck movements that are in place with the City of Detroit. Routes for construction traffic in the US include M-85 (Fort St), Green St (from Fort to Jefferson Ave), Livernois Ave (from I-75 to CSX Railroad), Campbell Street (from Fort Street to Jefferson Avenue), Jefferson Avenue (from Campbell to the west City limits) and any permanently closed roadways. Designated haul routes are maintained for dust control and cleared of tracked mud daily.

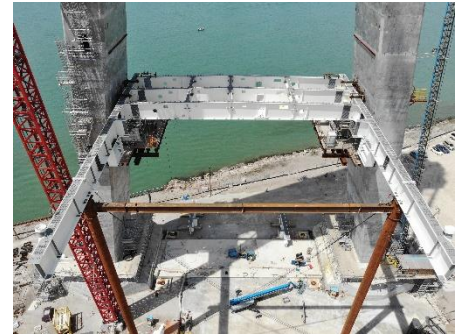


Canadian and US Bridge Tower construction

BRIDGE WORK

Construction of the lower pylons or tower legs have reached a significant milestone, having joined together in both the US and Canada.

The total height of the tower is composed of 51 different segments that are being constructed using a jump form climbing system that “jumps” vertically up the tower every 15 feet. The jump form systems showcase artwork from local artists from Walpole Island First Nation, Caldwell First Nation and Southwest Detroit.



Bridge deck construction

The project team has also started the construction of the bridge deck pier tables (supports for the bridge deck). Construction of the bridge deck will start at the back span of the bridge, and construction will work its way over the Detroit River likely in 2023.

I-75 INTERCHANGE WORK

I-75 construction work moved from phase one to phase two in late 2021.

Phase One progress included:

- Demolition and reconstruction of the road bridges at Springwells Street, Livernois Avenue and Clark Street.
- Preparation of the service drives for the construction of new on and off-ramps to the US POE, and the I-75 ramps at Springwells Street, Clark Street and West Vernor Highway.
- Construction of a new pedestrian bridge at Solvay Street.

Phase Two construction includes:

- Livernois and Springwells Street road bridges opened to traffic.
- Livernois Street switched to a two-way traffic configuration between Fort Street and W. Lafayette Street. Livernois Street will remain one-way from W. Lafayette Street northbound.
- Long-term closures of the northbound and southbound I-75 service drives between Green Street and Waterman Street.
- Closure of Waterman Street, Dagoon Street, Green Street, and Junction Street road bridges.
- Demolition of Waterman Street, Dagoon Street, Green Street, and Junction Street road bridges and Ferdinand Street pedestrian bridge.
- A full weekend closure of MI-75 (northbound and southbound) from Springwells Street to Clark Street will be required for road bridge demolitions.

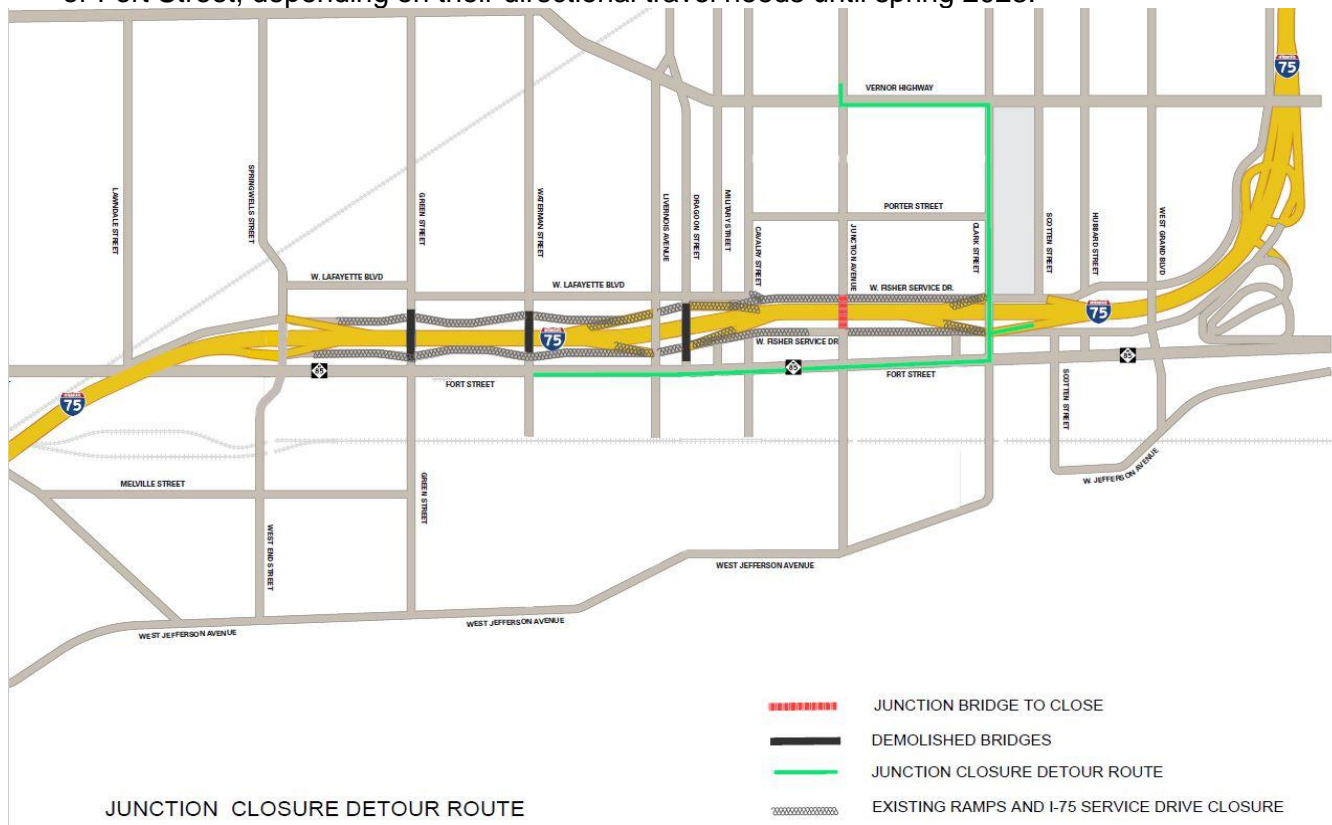
Clark Street road bridge is open and Junction Street road bridge will soon close and be demolished this month. A date will be shared once confirmed.

This Junction Street bridge closure includes a long-term closure of Junction Street between northbound and southbound I-75 Service Drives. The Junction Street road bridge will be replaced with a pedestrian bridge, previously located at Morrell Street.

The Junction Street road bridge demolition is anticipated to take place in June 2022, and to accommodate there will be a full weekend closure of I-75 between Springwells and Clark Streets.

PHASE TWO TRAFFIC PATTERNS

- Following the closure and demolition of the Junction Street road bridge the primary detour route for motorists during Phase Two activities includes the use of the Livernois, Springwells or Clark Street road bridges to cross over I-75.
- Travellers wishing to access I-75 northbound or southbound will be detoured to West Vernor Highway or Fort Street, depending on their directional travel needs until spring 2023.



RAMP CONSTRUCTION FROM I-75 TO US POE

Work is underway on the new ramps that will connect I-75 to the US POE, located between Campbell Street and Livernois Avenue, and will provide an overpass above Fort Street and I-75 lanes and on/off ramps.

Ramp work will be undertaken in a non-sequential approach to help expedite construction, with multiple crews expected to be working on the ramps at the same time. Work will begin on the north side of the ramps and move south towards the POE. This will include pile driving, concrete footing and pier construction, future girder placement and road deck construction.

To support activities underway on the Michigan Interchange, road closures are necessary and will continue to be ongoing. Advance notification will continue to be issued to keep the travelling public informed about upcoming closures. Access to adjacent properties and emergency services will also be maintained.

For more information about the Gordie Howe International Bridge project visit www.GordieHoweInternationalBridge.com or call 1-844-322-1773. Follow us on Twitter at www.twitter.com/GordieHoweBrg, like us on Facebook at www.facebook.com/GordieHoweBridge and connect with us on LinkedIn at www.linkedin.com/company/wdba-apwd