



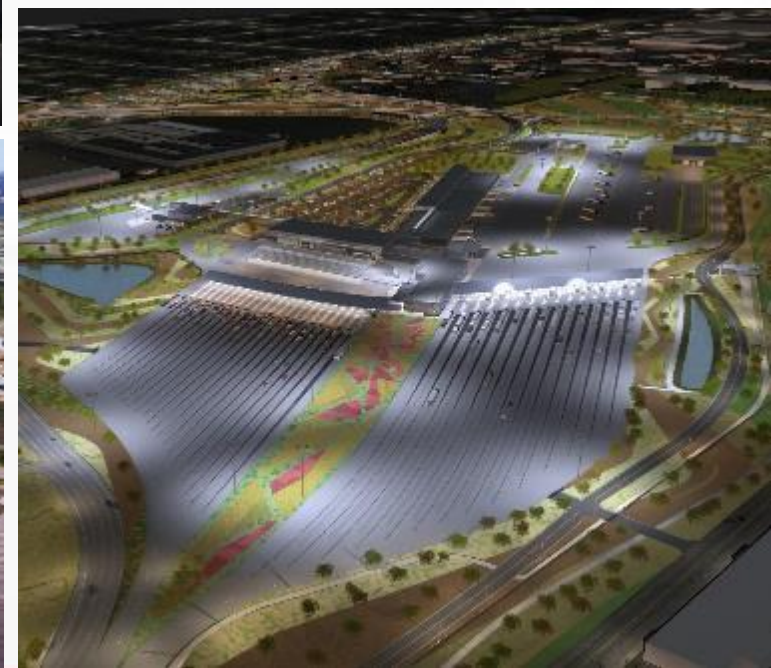
PONT INTERNATIONAL
GORDIE
HOWE
INTERNATIONAL BRIDGE



PUBLIC INFORMATION MEETING #22

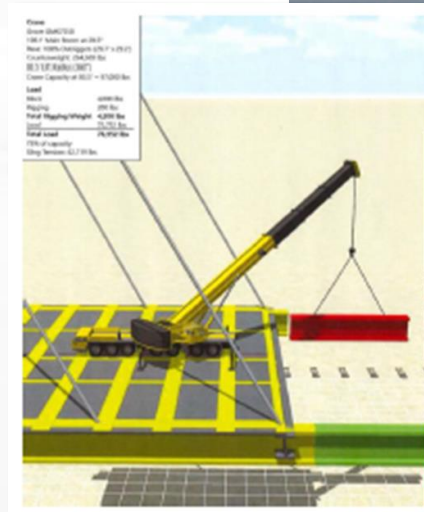
December 7, 2022

PROJECT COMPONENTS

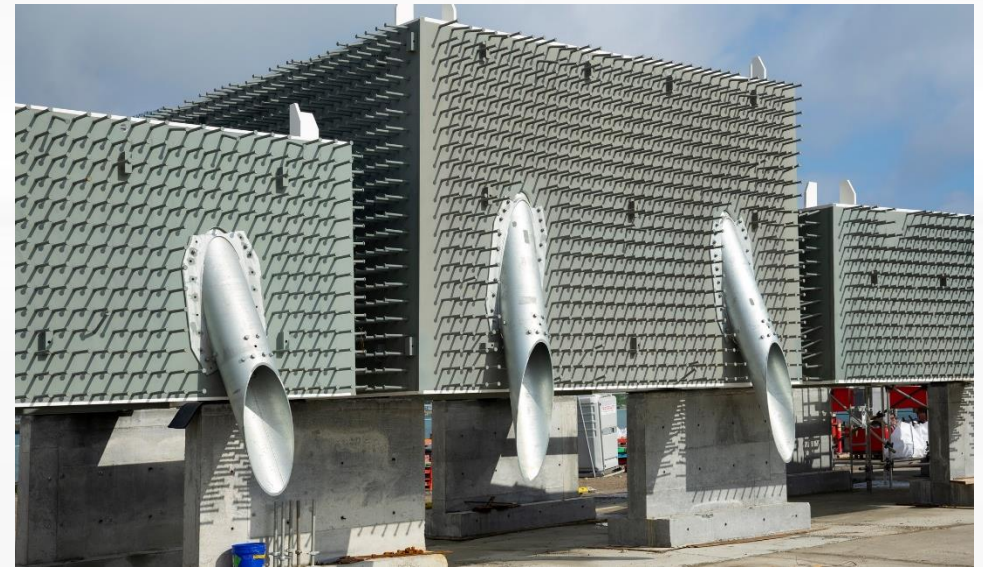
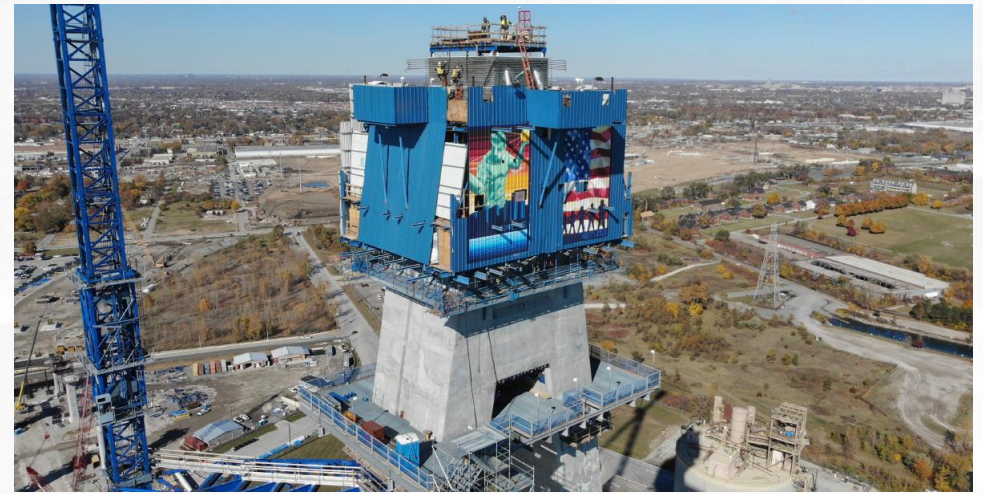


OVERALL BRIDGE CONSTRUCTION APPROACH

- Bridge piers located on land
- Unbalanced cantilever system; stick build
- Build back span using temporary towers while main concrete towers are being constructed
- Main span will be constructed with the pieces transported from the back span/bridge approach



CONSTRUCTION UPDATE: BRIDGE SITES



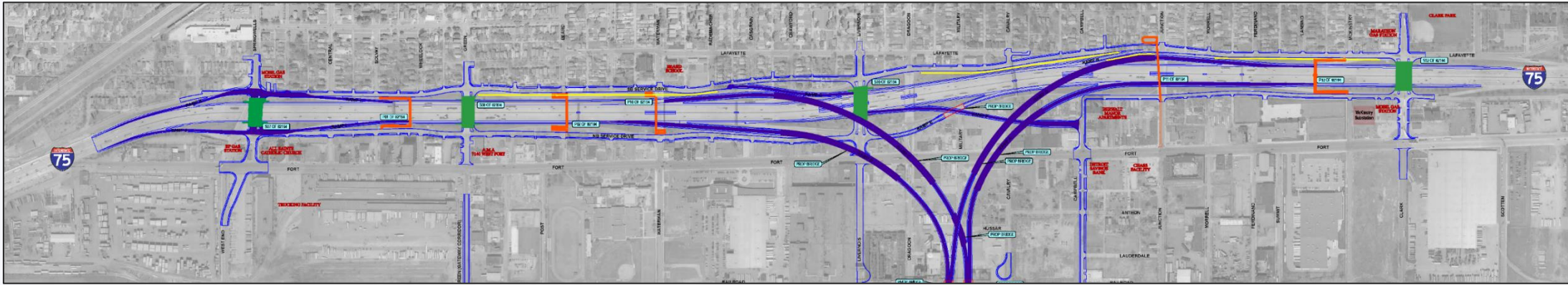
CONSTRUCTION UPDATE: US PORT OF ENTRY



CONSTRUCTION UPDATE: CANADIAN PORT OF ENTRY



CONSTRUCTION UPDATE: MICHIGAN INTERCHANGE (I-75)



The future configuration of this area includes the following:

Road Bridges

Road bridges carrying vehicular traffic over I-75 will be reconstructed at:

- Springwells Street
- Green Street
- Livernois Avenue (two-way traffic)
- Clark Street

Pedestrian Bridges

- Waterman Street
- Beard Street
- Solvay Street
- Junction Street
- Lansing Street

Access Ramps

North and southbound I-75 ramps will be accessible as follows:

Northbound Exit Ramps:

- Springwells Street
- I-75 exit to US POE (new)
- Campbell Street (new)
- US POE exit to I-75 (new)

Northbound Entrance Ramps:

- Springwells Street
- Livernois Avenue
- Clark Street

Southbound Exit Ramps:

- Clark Street
- I-75 exit to US POE (new)
- US POE exit to I-75 (new)
- Waterman Street (new)
- Springwells Street

Southbound Entrance Ramps:

- Springwells Street
- Junction Street

CONSTRUCTION UPDATE: I-75

✓ Complete In progress

Phase Two construction activities include:

- ✓ Opening of Clark Street, Springwells and Livernois Avenue road bridges
- ✓ Demolition of Junction Street road bridge
- Reconstruction and closure of the north and southbound Service Drives between Green Street and Waterman Street

Local road reconstruction of the following:

- Campbell Street
- Livernois Avenue
- Clark Street (north and south end of the bridge)
- West End Street /Jefferson Avenue intersection
- Dearborn Street /Jefferson Avenue intersection
- I-75 shoulder widening from Green Street to Clark Street.

Construction of the following:

- Green Street road bridge
- Waterman Street pedestrian bridge
- Beard Street pedestrian bridge
- Lansing Street pedestrian bridge
- Junction Street pedestrian bridge
- Solvay Street pedestrian bridge



LONG-TERM CLOSURE OF SERVICE DRIVES CENTRAL AVENUE – CLARK STREET

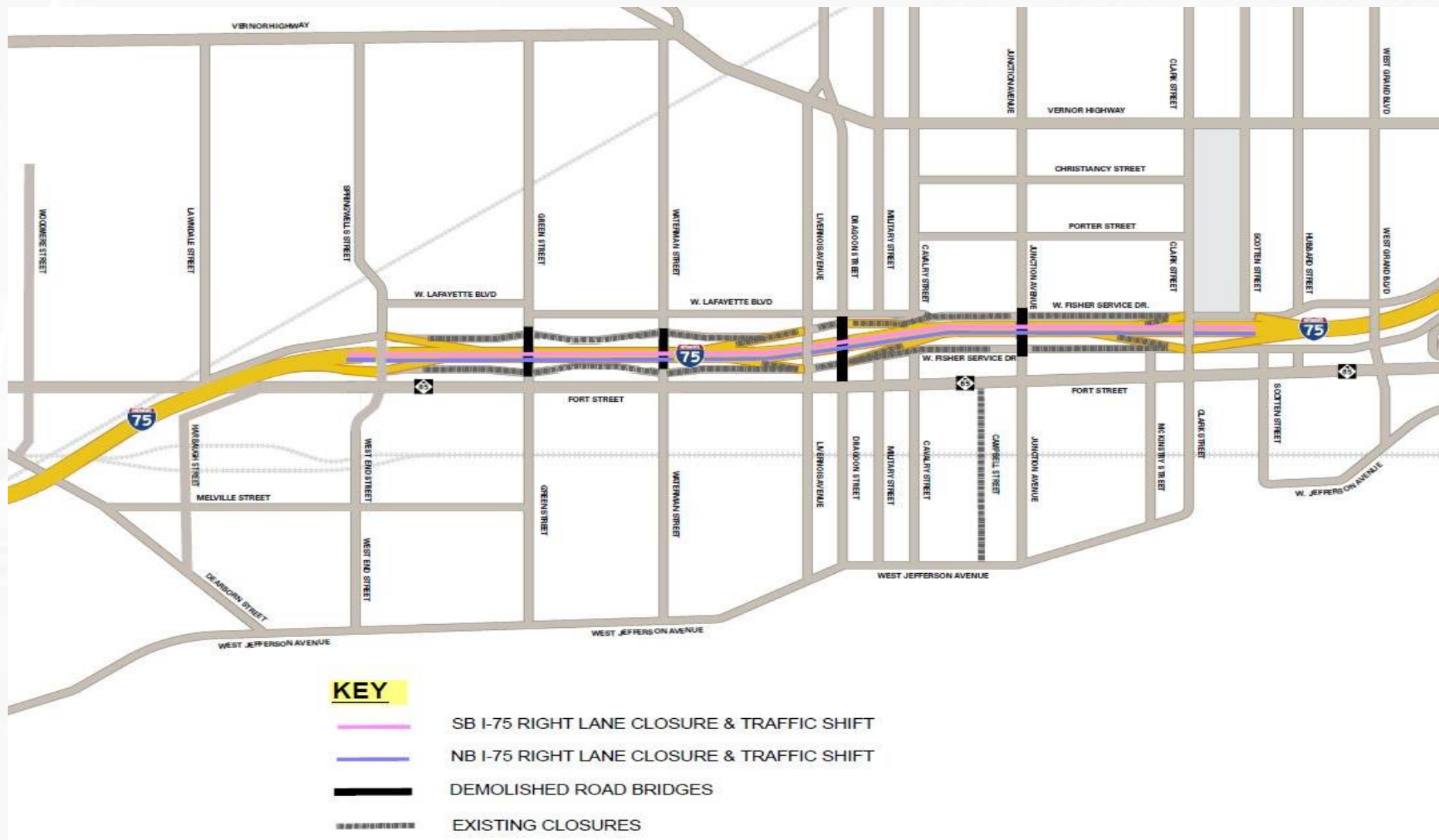


- I-75 Service Drives remain closed for:
- reconstruction of pedestrian and road bridges
 - construction of I-75 on-and-off ramps
 - widening of I-75 from Green Street to Clark Street.

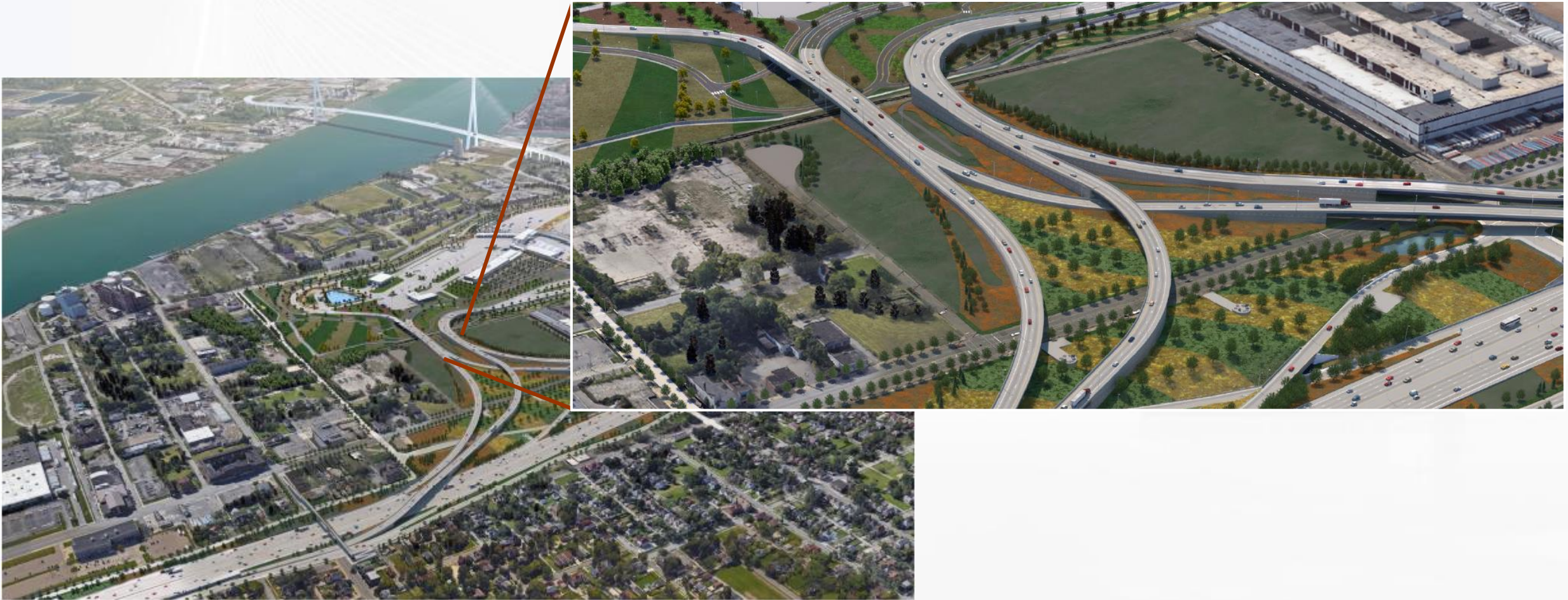
WIDENING OF I-75



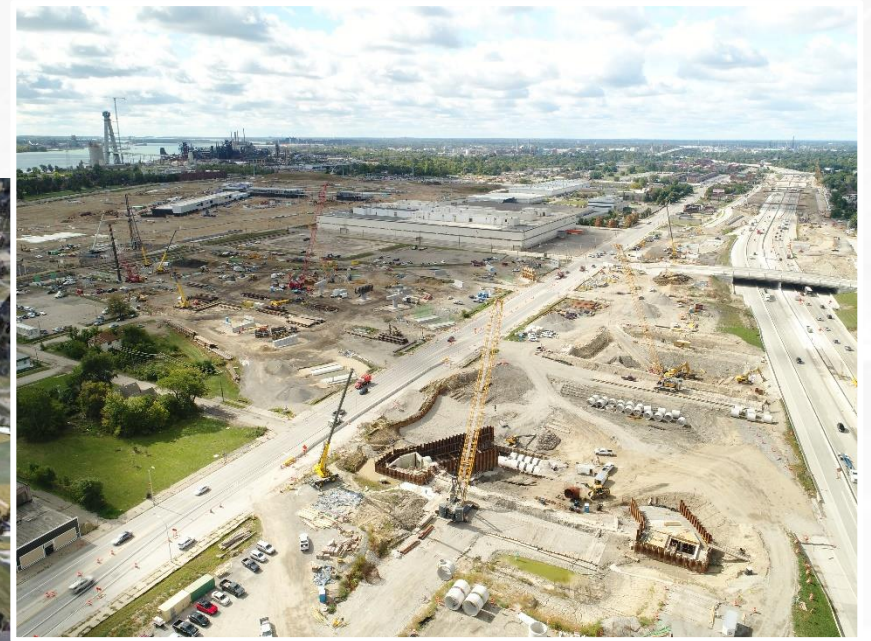
TRAFFIC SHIFTS: WIDENING OF I-75



RAMP CONSTRUCTION TO US PORT OF ENTRY



RAMP CONSTRUCTION



I-75 RAMP AESTHETICS



View looking west from northbound I-75 on-ramp at Livernois Ave

I-75 RAMP AESTHETICS



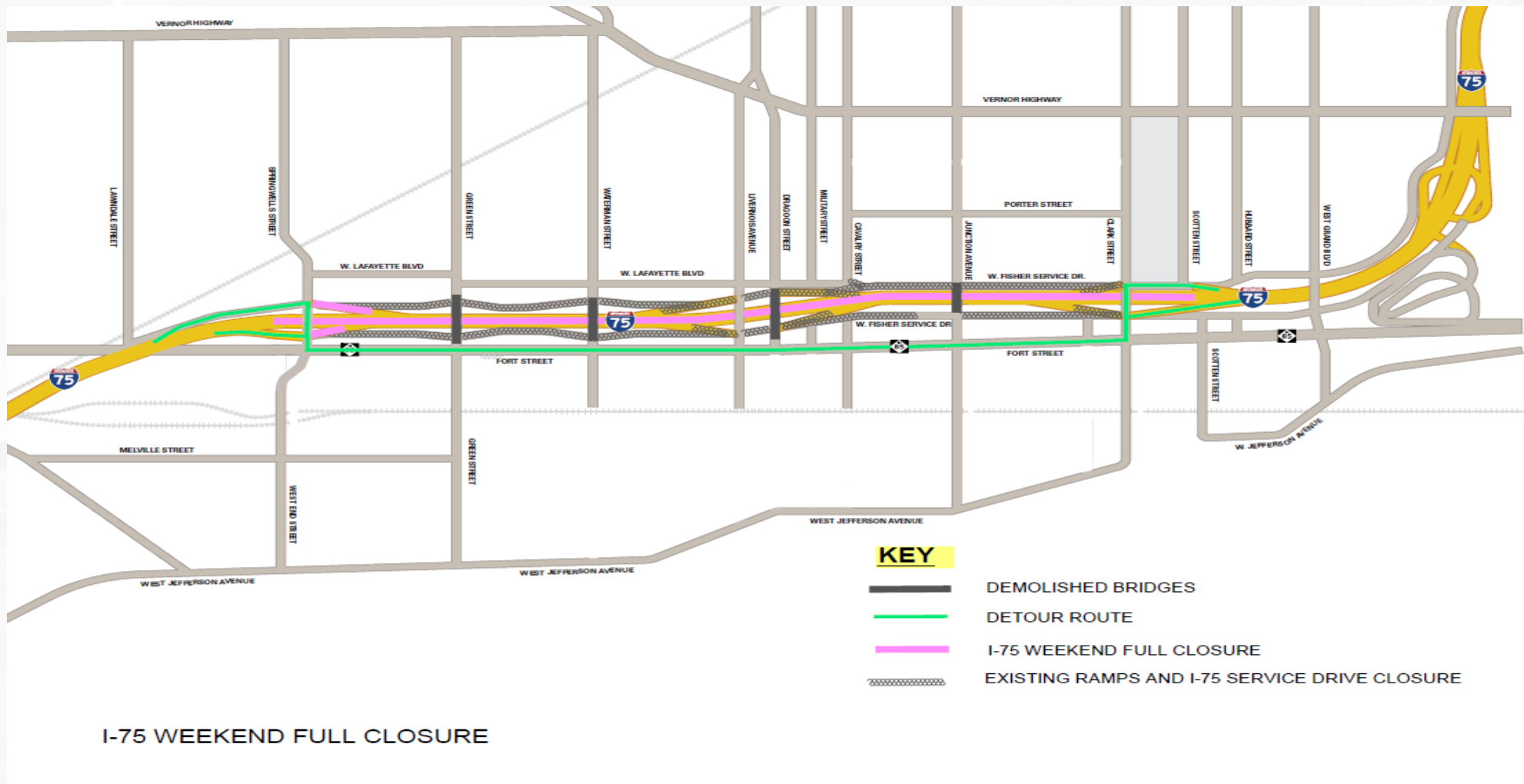
View looking east from Northbound I-75 Service Drive towards US POE ramp

I-75 FULL WEEKEND CLOSURE GIRDER INSTALLATIONS

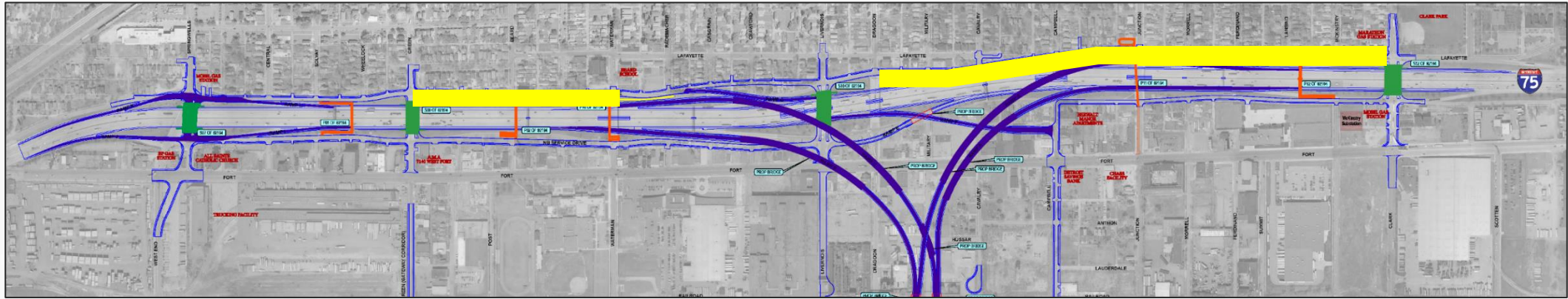
- Full weekend closure, anticipated for December 9-12:
 - December 9: **Northbound** I-75 will fully close at 9 p.m. and reopen on Sunday, December 11 at 10 a.m.
 - December 9: **Southbound** I-75 will fully close at 9 p.m. and reopen on Monday, December 12 at 5:00 a.m.
- Full weekend closure of **southbound** I-75 anticipated for December 16-19:
 - December 16: Southbound I-75 will close at 9 p.m. and reopen on Monday, December 19 at 5 a.m.

ANTICIPATED I-75 FULL WEEKEND CLOSURES						
Monday	Tuesday	Wednesday	Thursday	Friday	Saturday	Sunday
			1	2	3	4
5	6	7 TODAY	8	9	10	11
12	13	14	15	16	17	18
19	20	21	22	23	24	25 🎄
26	27	28	29	30	31	

I-75 FULL WEEKEND CLOSURES



NOISE WALLS ON I-75



Road Bridges



Access Ramps

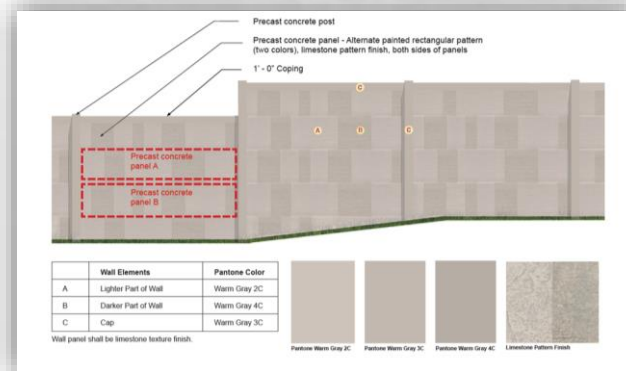


Noise Walls



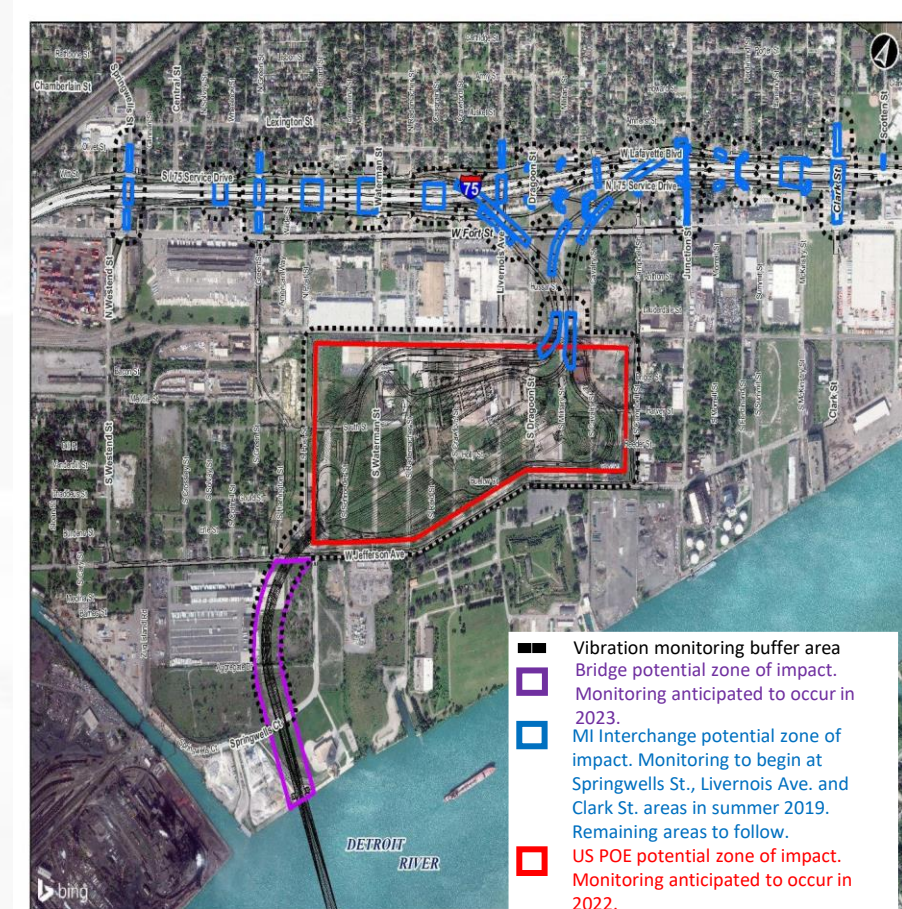
Bridging North America (BNA) is constructing noise walls (traffic sound barriers) along three sections of southbound I-75 to help mitigate highway noise for nearby residents:

1. Green Street to Waterman Street
2. Dragoon Street to Junction Street
3. Junction Street to Clark Street



VIBRATION MONITORING

- In some instances, construction activities may cause noise and vibration beyond the project limits.
- Pre-construction, construction and post-construction foundation surveys are available to owners of properties located within 150 feet of identified vibration zones.
- Once opted-in, BNA will coordinate a survey of the property.
- Vibration levels will be monitored throughout construction activities.
- Visit gordiehoweinternationalbridge.com or contact info@wdbridge.com for more information.



COMMUNITY BENEFITS PLAN



The Workforce Development and Participation Strategy is geared toward engaging businesses and individuals and focuses on supporting workforce, training and pre-apprenticeship/apprenticeship opportunities.



The Neighbourhood Infrastructure Strategy focuses on collaborating with stakeholders and community members through consultation to develop a community investment strategy based on identified priorities.

US Bridge Site

WORKFORCE DEVELOPMENT AND PARTICIPATION STRATEGY

Cumulative Totals from September 2018 – August 2022

7620+ individuals oriented to the project in Canada and the US

42% are local



370+

apprentices/pre-apprentices assigned to the project



250+

co-operative learning experiences have been provided on the project



230+ local businesses engaged on the project

WORKFORCE DEVELOPMENT AND PARTICIPATION STRATEGY

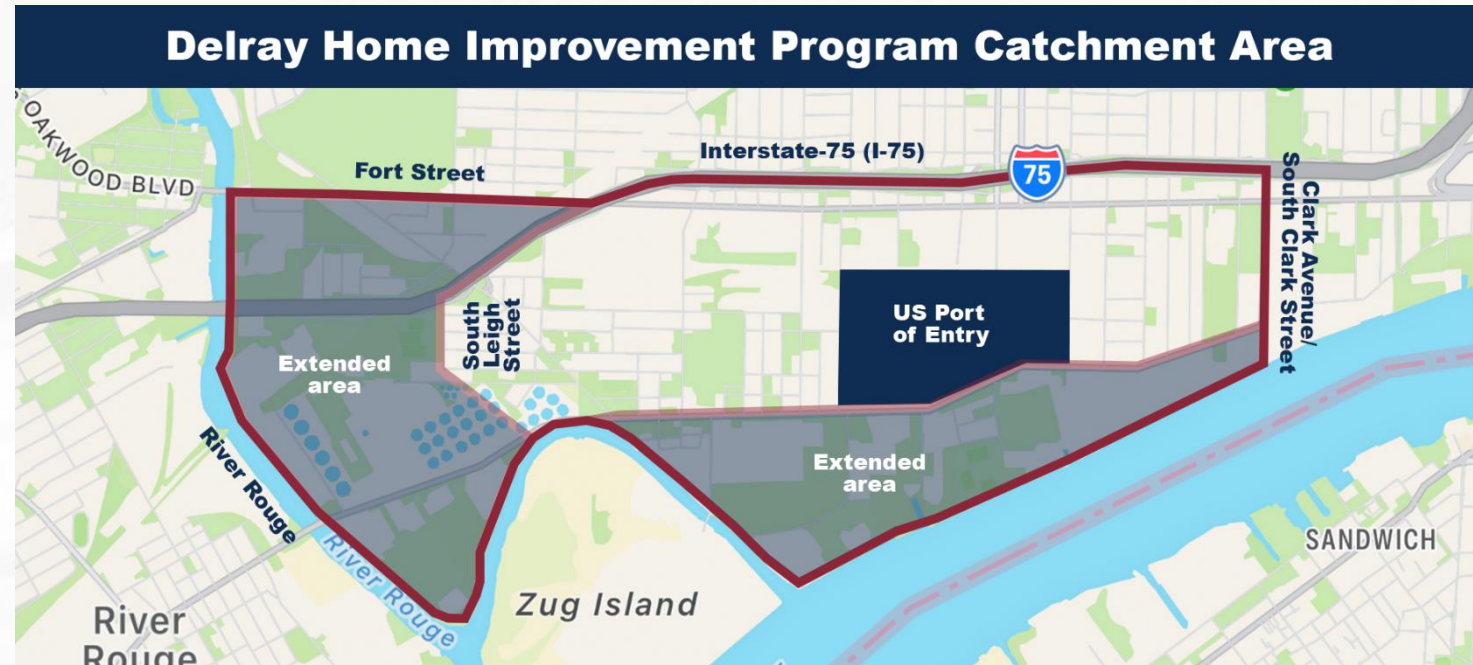


NEIGHBOURHOOD INFRASTRUCTURE STRATEGY



DELRAY HOME IMPROVEMENT PROGRAM

- Delivered in partnership with Local Initiatives Support Corporation (LISC) Detroit
- Repairs offered include:
 - Window replacement
 - HVAC system replacement
 - Insulation
 - Roof Repair
- The program continues to accept applications for eligible households in the Delray community and has recently expanded to include homes in Target Area 3 – Carbon Works
- 65 homes have received repairs or are in the process to receive repairs



2022 COMMUNITY BENEFITS PLAN PROPOSALS

- A portion of the \$10 million has been set aside to support the expansion of existing or additional initiatives. Some of this funding is being assigned this year.
- Feedback from consultation was shared with project leadership for consideration.
- Organizations selected to receive funding will be announced in early 2023.



COMMUNITY BENEFITS PLAN

JUNE 2019

COMMUNITY ORGANIZATION INVESTMENT

The Gordie Howe International Bridge team is now accepting funding applications for the 2023 Community Organization Investment initiative.

An **annual \$100,000 (CDN) investment allowance per country** will be made available in 2023 and 2024. Requests for funding can range from **\$1,000 - \$25,000 (CDN)**.

Applications will be considered for funding if:

- The organization(s) applying is **located in or provides services to the host communities** of Sandwich/west Windsor or Delray/Southwest Detroit neighbourhoods
- The requested funding will be invested in **events, programming and infrastructure improvements** that will benefit the host communities
- The applicant is a **registered charity or has a trustee relationship** with a registered charity.

Applications are being accepted until **January 25, 2023**.



COMMUNITY ORGANIZATION INVESTMENT INFORMATION SESSIONS



- **Virtual Information Session**

- Wednesday, December 14, 2022, 10:00 a.m. – 11:00 a.m.
- Register at GordieHoweInternationalBridge.com

- **Windsor Information Session**

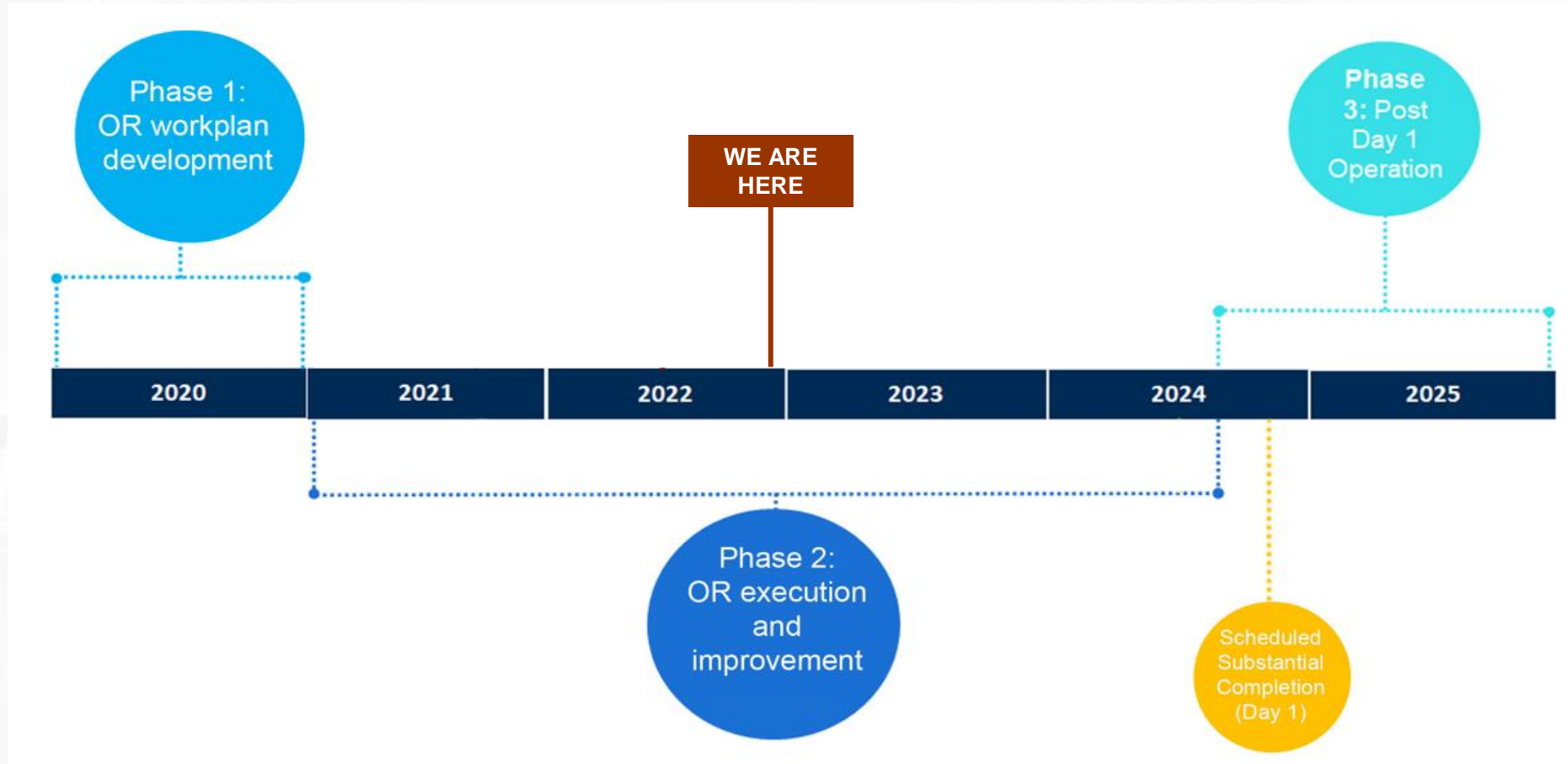
- Wednesday, January 11, 2023, 4:00 p.m. – 7:00 p.m.
- Sandwich Community Office, 3201 Sandwich Street, Windsor



- **Detroit Information Session**

- Thursday, January 12, 2023, 4:00 p.m. – 7:00 p.m.
- Southwest Detroit Community Office, 7744 W Vernor Hwy, Detroit

PREPARING FOR OPENING DAY: OPERATIONAL READINESS



WDBA periodically to update it)

COMMUNITY OFFICE HOURS



Sandwich Community Office
3201 Sandwich St.
Windsor

Available appointment hours:

- Tuesdays 1:00 pm – 4:30 pm
- Thursdays 8:00 am – 12:00 pm.



Southwest Detroit Community Office
7744 W Vernor Hwy.
Detroit

Available appointment hours:

- Tuesdays 8:00 am – 12:00pm
- Thursdays 1:00 pm – 4:30 pm

After-business appointments may be available upon request

QUESTION AND COMPLAINT PROCESS

The project team is committed to ensuring that communication with the public is maintained during construction so concerns are addressed as quickly as possible. Adjacent residents and businesses will receive notifications of upcoming work, regular progress updates and project contact information.

Questions and complaints can be addressed to WDBA through the following:

- Public inquiry line: 1-844-322-1773
- Info@wdbbridge.com

LEARN MORE

 gordiehoweinternationalbridge.com

 1-844-322-1773

 @gordiehowebrg

 @gordiehowebridge

 Gordie Howe Bridge

 @gordiehowebrg

 WDBA-APWD

