



PONT INTERNATIONAL
GORDIE
HOWE
INTERNATIONAL BRIDGE



PUBLIC INFORMATION MEETING #24

June 21, 2023

| NEW CHIEF EXECUTIVE OFFICER

WINDSOR-DETROIT BRIDGE AUTHORITY

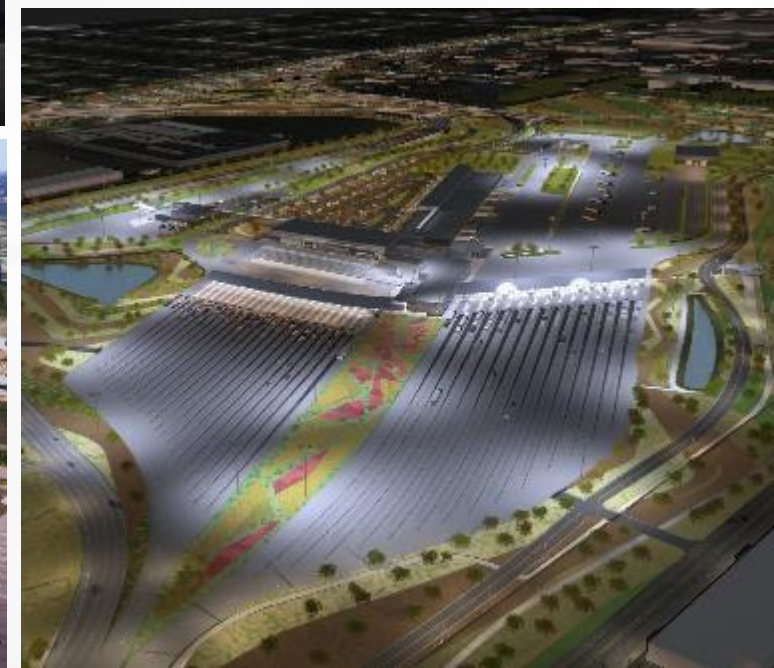
Charl van Niekerk



Infrastructure
Canada

Canada

PROJECT COMPONENTS



CONSTRUCTION UPDATE: BRIDGE SITES



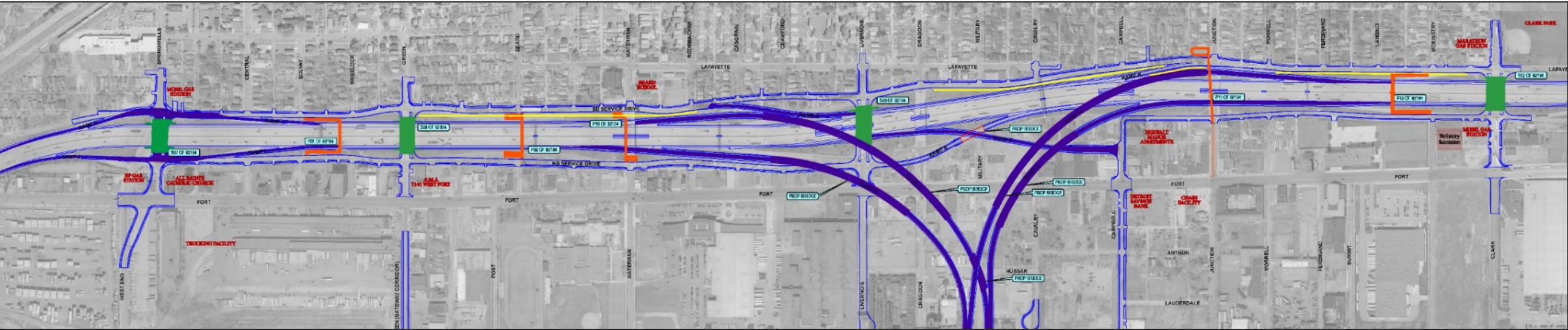
CONSTRUCTION UPDATE: US PORT OF ENTRY



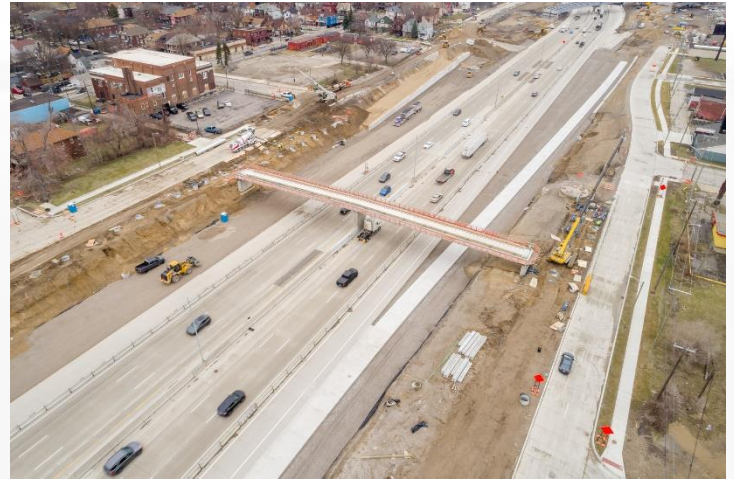
CONSTRUCTION UPDATE: CANADIAN PORT OF ENTRY



CONSTRUCTION UPDATE: MICHIGAN INTERCHANGE (I-75)



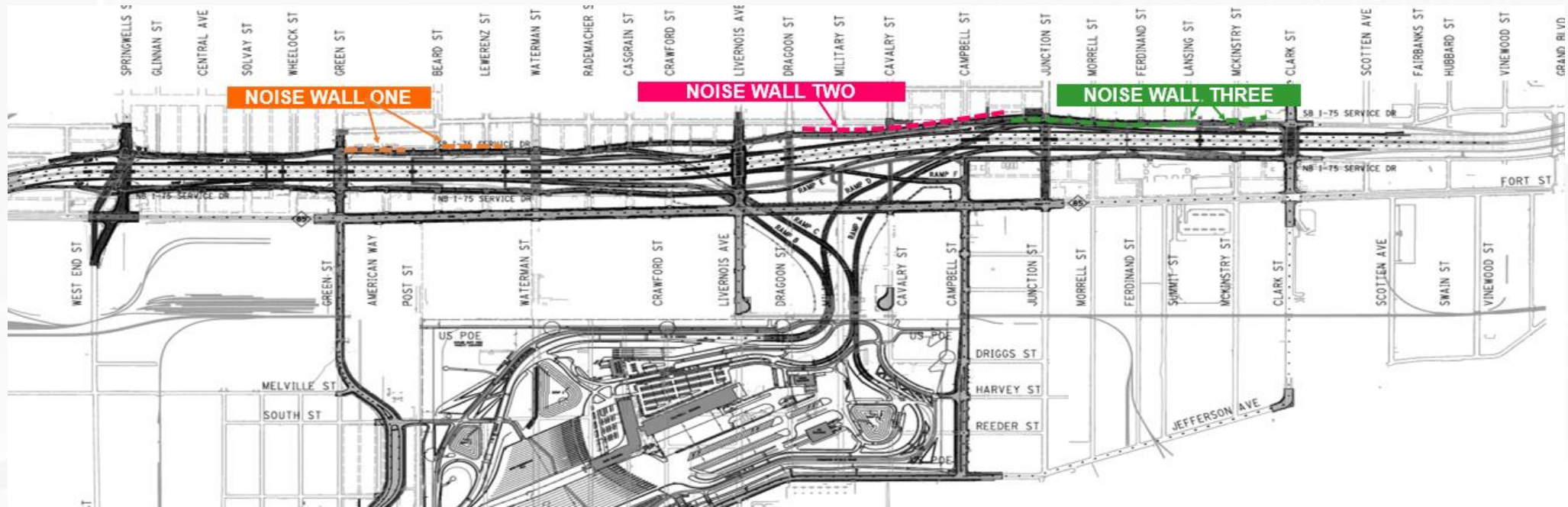
ROAD BRIDGES **PEDESTRIAN BRIDGES** **ACCESS RAMPS**



I-75 TO US POE CONNECTING RAMPS

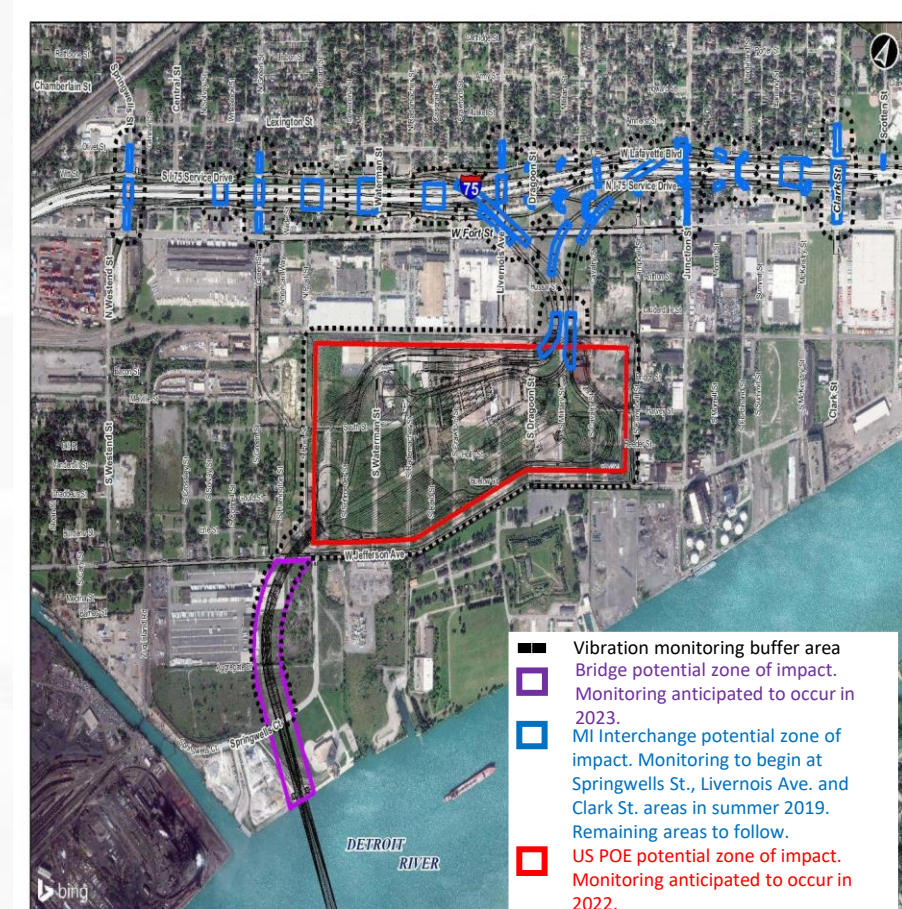


NOISE WALL CONSTRUCTION



VIBRATION MONITORING

- In some instances, construction activities may cause noise and vibration beyond the project limits.
- Pre-construction, construction and post-construction foundation surveys are available to owners of properties located within 150 feet of identified vibration zones.
- Once opted-in, BNA will coordinate a survey of the property.
- Vibration levels will be monitored throughout construction activities.
- Visit gordiehoweinternationalbridge.com or contact info@wdbridge.com for more information.



SAFETY DURING CONSTRUCTION

- **Construction zones are dangerous** places whether workers are present or not.
- Any entry into the construction site is considered **trespassing**.
- **Drones** put our **staff**, especially those working at heights, in **danger**.
- For **your safety** and the safety of **our staff**, please **do not enter the project construction zones** unless authorized to do so.



BRIDGE LIGHTING

- Energy efficient LED lights
- Control system with dimming and sequencing options
- Lighting optics with spill minimization features



**VISUAL ART PROGRAM
PUBLIC ART COMMISSION:**
Dramatic bridge lighting will be incorporated as an artistic feature.

BRIDGE TOWERS

- Illuminated in all directions

STAY CABLES

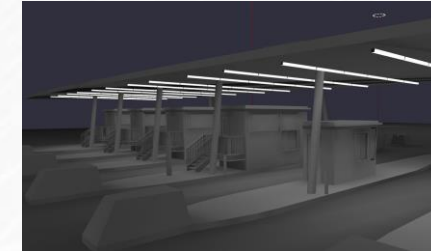
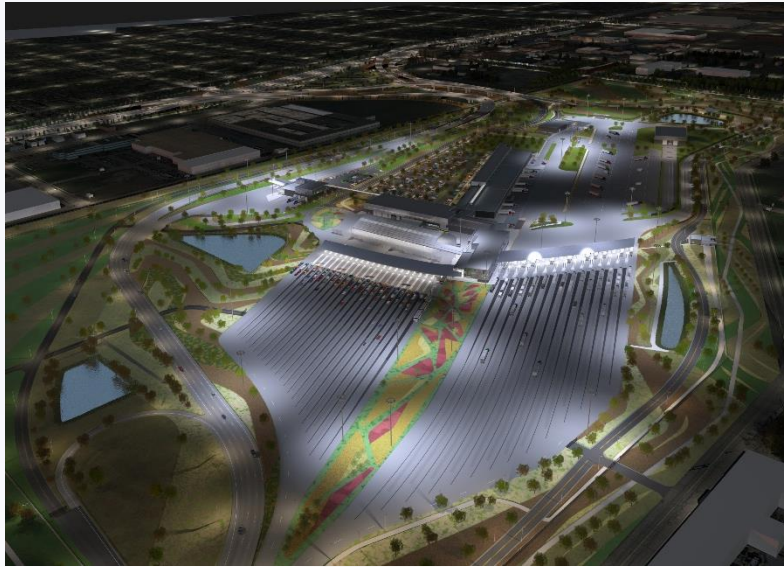
- Individually illuminated from base upward

BRIDGE DECK

- Lined with lights defining the decks edge



PORTS OF ENTRY LIGHTING



- Energy efficient LED lights
- Downlighting to reduce light spill
- Control system with dimming and sequencing options



ARCHITECTURAL LIGHTING

- provide visual support for operational tasks

FUNCTIONAL LIGHTING

- enhance visibility and improve safety of roadways

AESTHETIC LIGHTING

- accent building features, flagpoles and landscaped areas.

COMMUNITY BENEFITS PLAN



The Workforce Development and Participation Strategy is geared toward engaging businesses and individuals and focuses on supporting workforce, training and pre-apprenticeship/apprenticeship opportunities.



The Neighbourhood Infrastructure Strategy focuses on collaborating with stakeholders and community members through consultation to develop a community investment strategy based on identified priorities.

US Bridge Site

WORKFORCE DEVELOPMENT AND PARTICIPATION STRATEGY

Cumulative Totals from September 2018 – March 2023

9230+ individuals oriented to the project in Canada and the US

42% are local



595+

apprentices/pre-apprentices assigned to the project



310+

co-operative learning experiences have been provided on the project



260+

local businesses engaged on the project

WORKFORCE DEVELOPMENT AND PARTICIPATION STRATEGY



NEIGHBORHOOD INFRASTRUCTURE STRATEGY



NEIGHBOURHOOD INFRASTRUCTURE STRATEGY: 2023 PROGRAMMING INVESTMENTS SURVEY



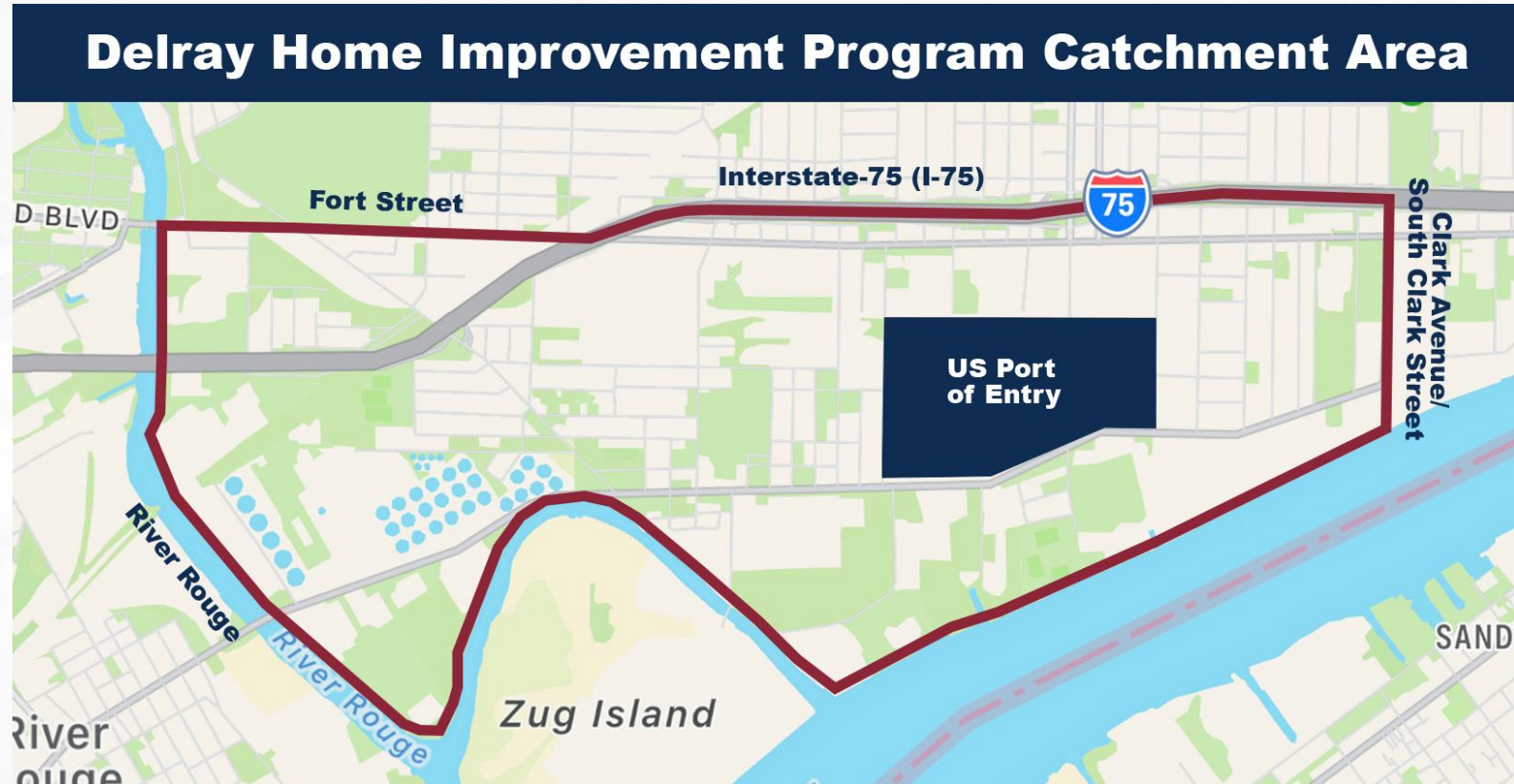
HAVE YOUR SAY ON COMMUNITY INVESTMENT PRIORITIES

TAKE THE SURVEY:

- online at GordieHoweInternationalBridge.com
- submit a paper survey or provide feedback directly to a staff member here today.
- **Survey closes July 12, 2023**

DELRAY HOME IMPROVEMENT PROGRAM

- Delivered in partnership with Local Initiatives Support Corporation (LISC) Detroit
- Repairs offered include:
 - Window replacement
 - HVAC system replacement
 - Insulation
 - Roof repair
- The program continues to accept applications for eligible households in the Delray community
- 67 homes have received repairs or are in the process to receive repairs



LOCAL COMMUNITY GROUP RECRUITMENT



- The Local Community Group works with WDBA and BNA as informal partners on the implementation of the Community Benefits Plan
- **RECRUITING NEW MEMBERS:**
 - Two-year term
 - Participates in quarterly meetings
 - Provides input into the implementation of Community Benefits
- Stay tuned for more information and how to apply

PREPARING FOR OPENING DAY: OPERATIONAL READINESS



COMMUNITY OFFICE HOURS



Sandwich Community Office
3201 Sandwich St.
Windsor



Southwest Detroit Community Office
7744 W Vernor Hwy.
Detroit

As of July 11, 2023, community office hours will include:

Tuesdays 10:00 a.m. – 4:00 p.m.

Thursdays 10:00 a.m. – 4:00 p.m.

After-business appointments may be available upon request

QUESTION AND COMPLAINT PROCESS

The project team is committed to ensuring that communication with the public is maintained during construction so concerns are addressed as quickly as possible. Adjacent residents and businesses will receive notifications of upcoming work, regular progress updates and project contact information.

Questions and complaints can be addressed to WDBA through the following:

- Public inquiry line: 1-844-322-1773
- Info@wdbbridge.com

LEARN MORE

 gordiehoweinternationalbridge.com

 1-844-322-1773

 @gordiehowebrg

 @gordiehowebridge

 Gordie Howe Bridge

 @gordiehowebrg

 WDBA-APWD

