



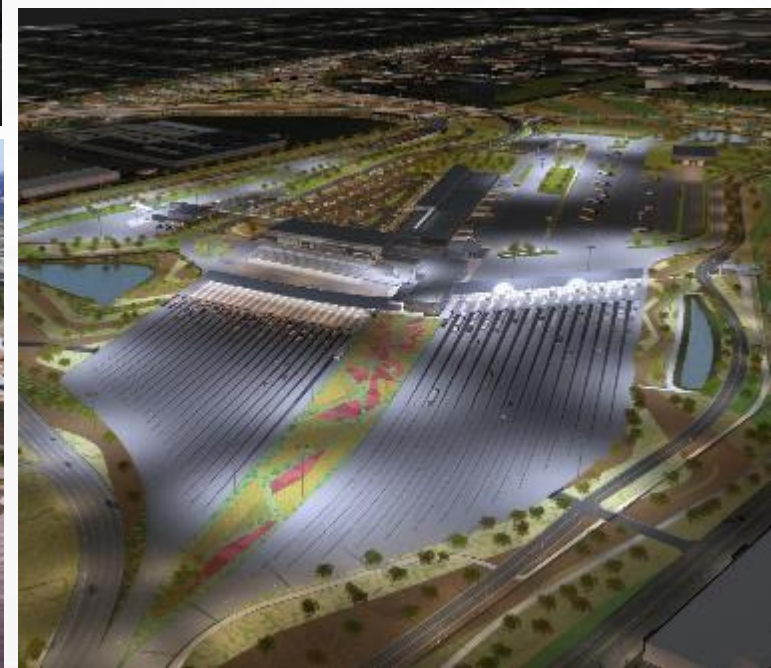
PONT INTERNATIONAL
GORDIE
HOWE
INTERNATIONAL BRIDGE



PUBLIC INFORMATION MEETING #26

December 6, 2023

PROJECT COMPONENTS



CUSTOMER CENTRICITY

The Gordie Howe International Bridge will provide a system of travel that is customer-centric, easy to use and that makes travelling from point A to point B as simple as possible.



CONSTRUCTION UPDATE: BRIDGE SITES



CONSTRUCTION UPDATE: CANADIAN PORT OF ENTRY



CONSTRUCTION UPDATE: US PORT OF ENTRY



CONSTRUCTION UPDATE: MICHIGAN INTERCHANGE (I-75)



SAFETY DURING CONSTRUCTION

- **Construction zones are dangerous**
- Please **do not enter the project construction zones** unless authorized to do so.



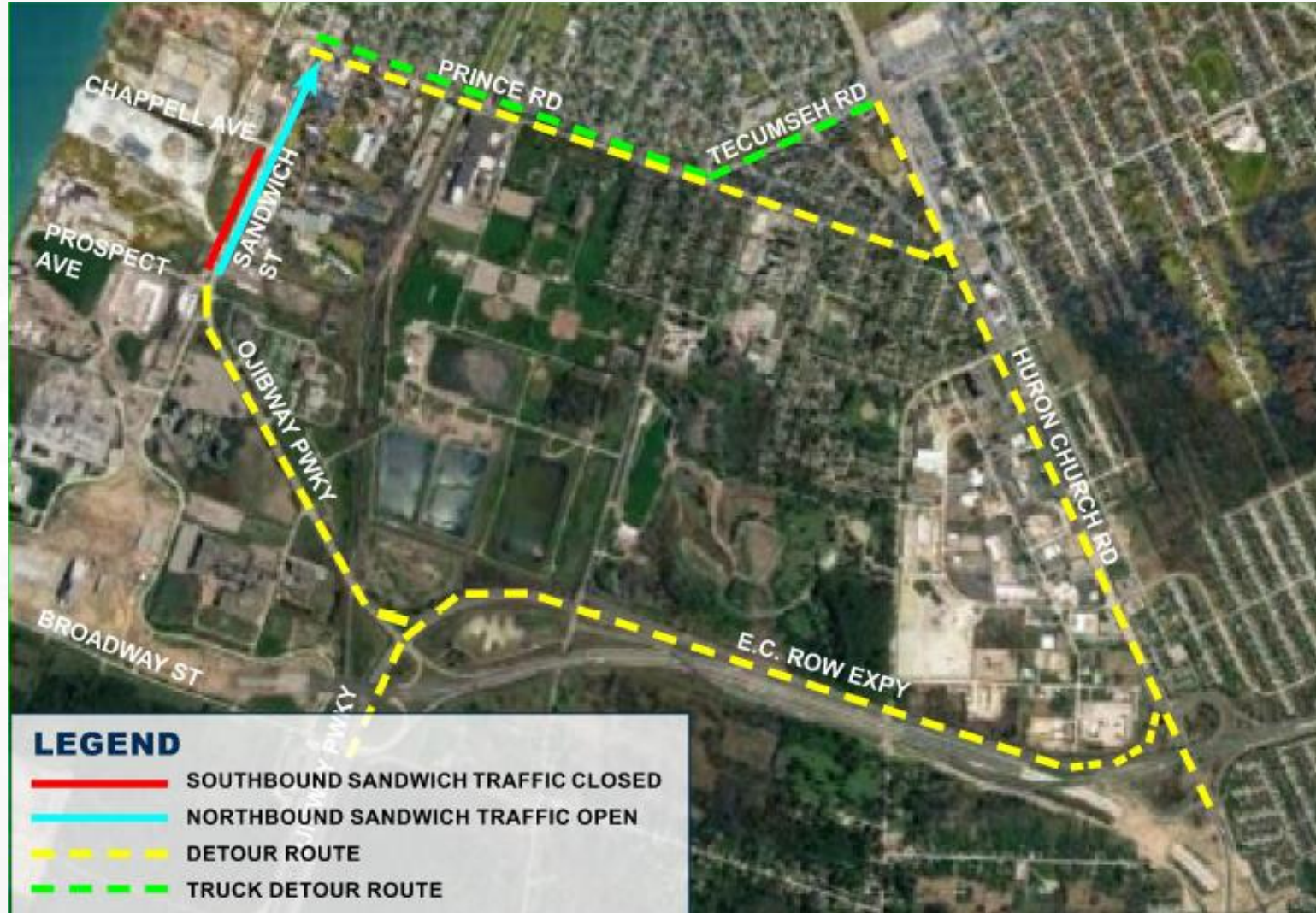
SANDWICH STREET RECONSTRUCTION

- Three kilometres of Sandwich Street will be reconstructed from south of the Rosedale Avenue roundabout past Ojibway Parkway to McKee Road.
- Construction is taking place in a three-phased approach:
 - **PHASE ONE:** McKee Road to Ojibway Parkway – anticipated to begin in 2024
 - **PHASE TWO:** Ojibway Parkway to Chappell Avenue – September 2023
 - **PHASE THREE:** Chappell Avenue to south of the Rosedale Avenue roundabout – anticipated to begin in 2024



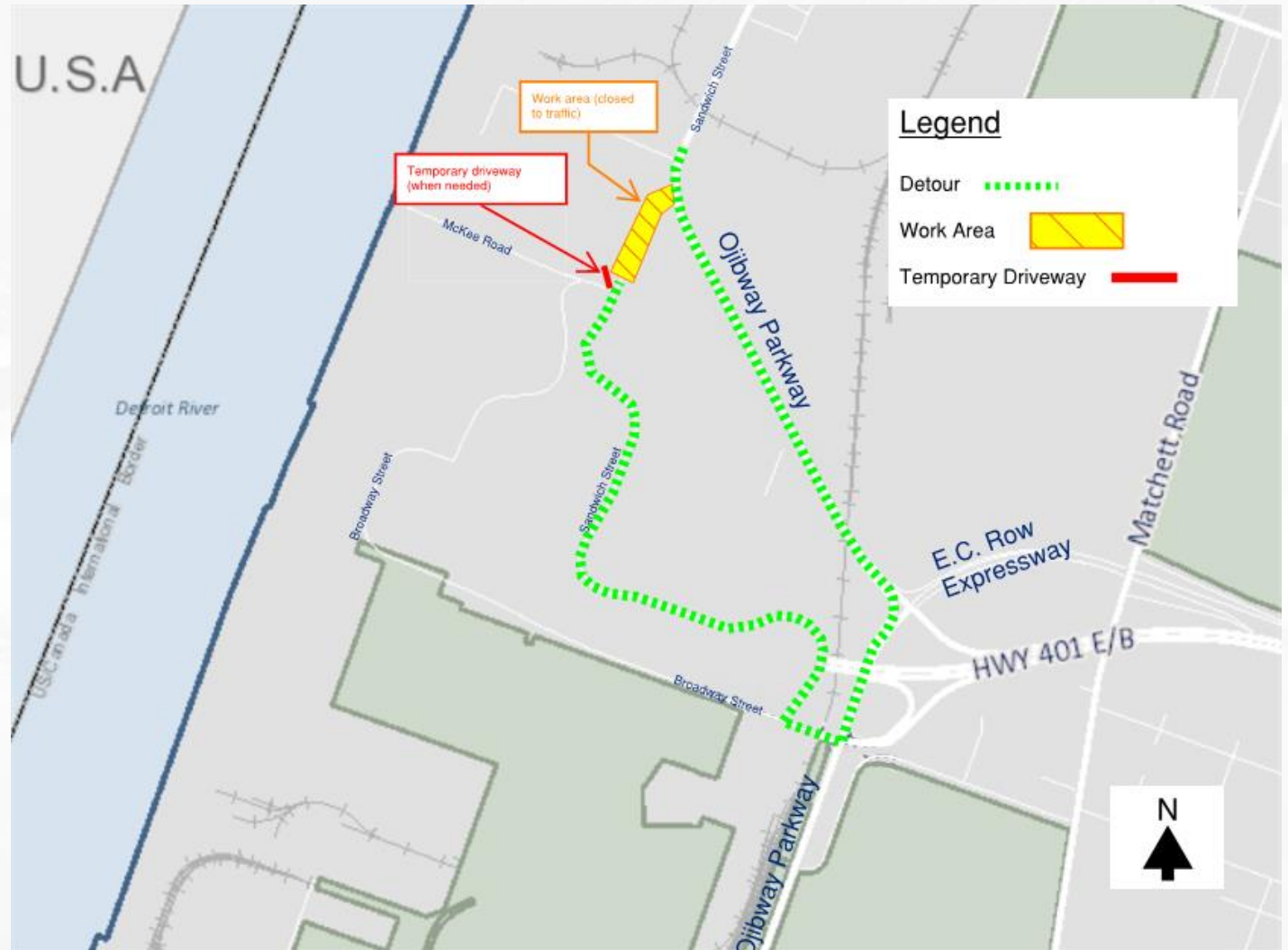
SANDWICH STREET RECONSTRUCTION PHASE TWO

- Southbound Sandwich Street between Essex Terminal Railway (ETR) and Chappell Avenue is closed.
- One lane of northbound traffic will remain in place.
- Businesses are accessible via northbound Sandwich Street.
- This closure is anticipated to be in place until mid-December.



ANTICIPATED SANDWICH STREET RECONSTRUCTION: PHASE ONE

- Phase One work is anticipated to require a full closure between McKee Road and the intersection of Ojibway Parkway and Sandwich Street.
- Anticipated to be in place for approximately 6 weeks.
- Temporary access will be provided to affected organizations



COMMUNITY BENEFITS PLAN



The Workforce Development and Participation Strategy is geared toward engaging businesses and individuals and focuses on supporting workforce, training and pre-apprenticeship/apprenticeship opportunities.



The Neighbourhood Infrastructure Strategy focuses on collaborating with stakeholders and community members through consultation to develop a community investment strategy based on identified priorities.

US Bridge Site

WORKFORCE DEVELOPMENT AND PARTICIPATION STRATEGY

Cumulative Totals from September 2018 – September 2023

10,950+

individuals oriented to the project in Canada and the US

42% are local



650+

apprentices/pre-apprentices assigned to the project



330+

co-operative learning experiences have been provided on the project



275+

local businesses engaged on the project

WORKFORCE DEVELOPMENT AND PARTICIPATION STRATEGY



NEIGHBOURHOOD INFRASTRUCTURE STRATEGY



2024 COMMUNITY ORGANIZATION INVESTMENT

NOW ACCEPTING APPLICATIONS



\$100,000 (CDN) available in Windsor and Detroit

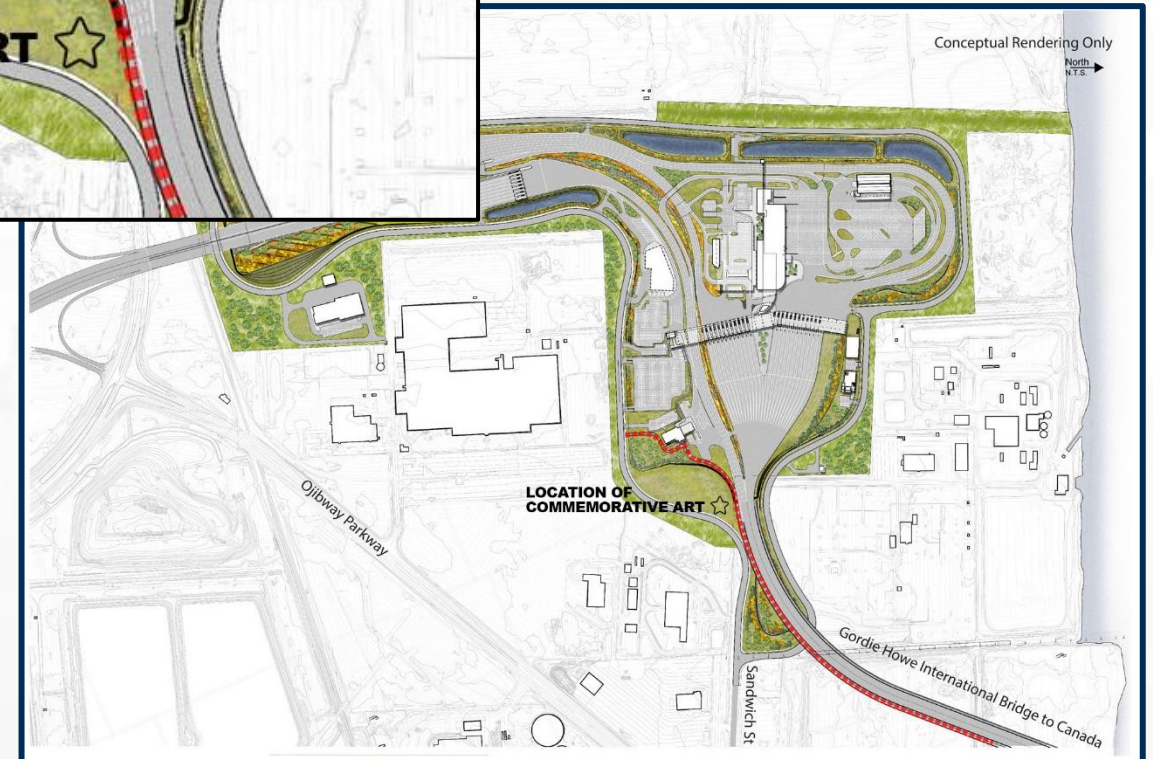
- \$1,000 - \$25,000 (CDN) per funding request
- funding will go towards events, programming and infrastructure improvements

To apply, the organization must be:

- located in or provide services to the project host communities
- a registered charity or non-profit organization or has a trustee/fiduciary relationship with a registered charity or non-profit.

Apply by 4 p.m. on Wednesday, January 31, 2024.

JORDAN SOOK SELECTED AS COMMEMORATIVE ART COMMISSION ARTIST



NATIONAL ENVIRONMENTAL, SOCIAL AND GOVERNANCE (ESG) AWARD



COMMUNITY OFFICE HOURS



Sandwich Community Office
3201 Sandwich St.
Windsor



Southwest Detroit Community Office
7744 W Vernor Hwy.
Detroit

Community office hours:
Tuesdays 10:00 a.m. – 4:00 p.m.
Thursdays 10:00 a.m. – 4:00 p.m.

After-business appointments may be available upon request

QUESTION AND COMPLAINT PROCESS

The project team is committed to ensuring that communication with the public is maintained during construction so concerns are addressed as quickly as possible. Adjacent residents and businesses will receive notifications of upcoming work, regular progress updates and project contact information.

Questions and complaints can be addressed to WDBA through the following:

- Public inquiry line: 1-844-322-1773
- Info@wdbbridge.com
- Booking an appointment at the Sandwich or Southwest Detroit Community Office

LEARN MORE

 gordiehoweinternationalbridge.com

 1-844-322-1773

 @gordiehowebrg

 @gordiehowebridge

 Gordie Howe Bridge

 @gordiehowebrg

 WDBA-APWD

