



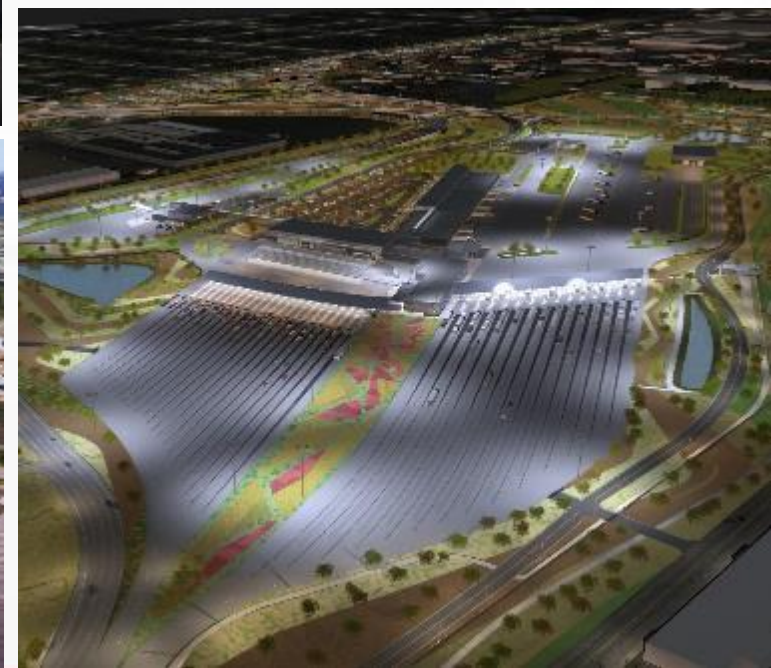
PONT INTERNATIONAL
GORDIE
HOWE
INTERNATIONAL BRIDGE

SANDWICH STREET RECONSTRUCTION AND \$1 MILLION ENHANCEMENTS

February 23, 2022



PROJECT COMPONENTS



CONSTRUCTION UPDATE: CANADIAN BRIDGE SITE



Canadian bridge tower work



Canadian bridge back span tower work

CONSTRUCTION UPDATE: US BRIDGE SITE



US bridge tower work



US bridge back span work

CONSTRUCTION UPDATE: CANADIAN POE



Canadian POE building construction



Canadian POE building construction

CONSTRUCTION UPDATE: US POE



US POE building construction



US POE building construction

SANDWICH STREET RECONSTRUCTION



SANDWICH STREET RECONSTRUCTION

- Three kilometres of Sandwich Street will be reconstructed, from south of the Rosedale Avenue roundabout, past Ojibway Parkway to McKee Avenue.



SANDWICH STREET RECONSTRUCTION OVERVIEW

- Removal and replacement of existing road and sidewalks.
- Bicycle lanes and multi-use path.
- Bumpouts at key intersections in the Business Improvement Area.
- Built to meet accessibility standards.
- New underground storm sewer between Ojibway Parkway and McKee Street.
- Where possible, existing healthy trees will remain.



SANDWICH RECONSTRUCTION: WHAT TO EXPECT

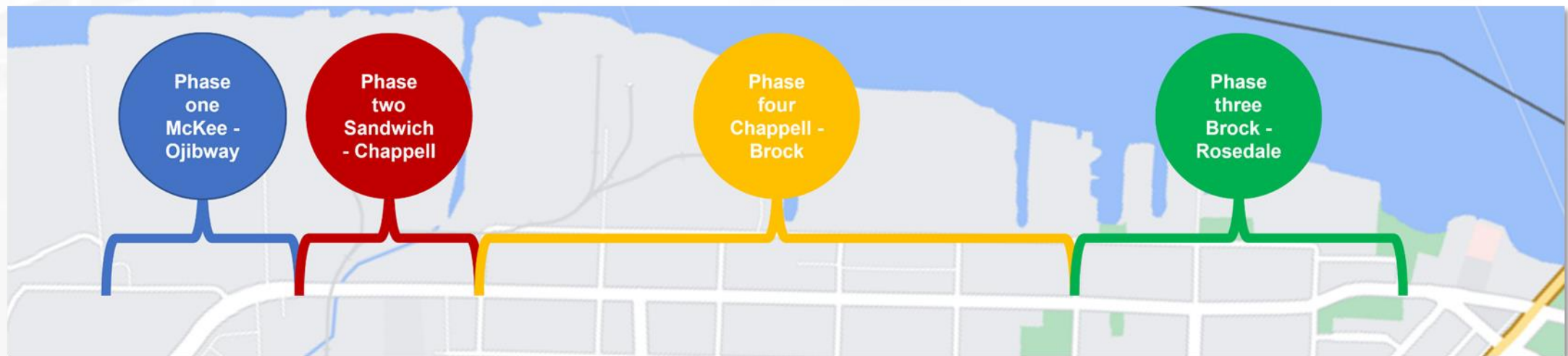
- Construction will be conducted between the hours of 6 a.m. and 8 p.m. daily.
- Sandwich Street will remain open to traffic during construction, although temporary lane closures may be required.
- BNA will remove the roadway and public sidewalks up to the property line.
- Driveway and access to businesses will be maintained.
- BNA will provide construction updates so businesses and residents in advance.



CONSTRUCTION TIMELINES

Sandwich Reconstruction Timelines

- Phase one – Summer 2022: McKee Road to Ojibway Parkway. Roadway, sidewalk, multi-use lanes and storm sewer.
- Phase two – Summer to Winter 2022: Ojibway Parkway to Chappell Street. Roadway, sidewalk, multi-use trail.
- Phase three – 2023: Brock Street south of the Rosedale Avenue roundabout, including the Sandwich Business Improvement Area. Roadway, sidewalks, bicycle lanes.
- Phase four – 2024: Chappell Street to Brock Street. Roadway, sidewalks, bicycle lanes.



CONSTRUCTION MITIGATION

Dust control

- Ongoing particulate monitoring throughout the site.
- Regular road sweeping and watering.
- Use of tarps for material transport.
- Assessment and accommodation of activities during periods of high winds, as needed.

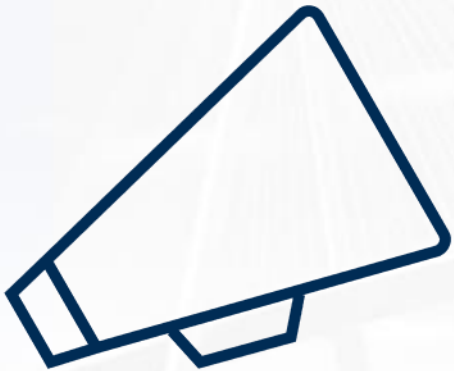
Noise

- During construction the equipment will be well-maintained to reduce noise, vibration and emissions.

Vibration Monitoring

- A vibration monitoring plan will be developed in advance of construction.

CONSTRUCTION AND TRAFFIC NOTIFICATIONS



Traffic notifications will occur through:

- Sandwich Street construction section on project website,
- project social media
- on-road signage for upcoming traffic situations.

Questions and concerns can be directed to:
info@wdbridge.com, or 1-844-322-1773

SANDWICH STREET – CHEWETT TO DETROIT



Yellow = bike lanes

Green = parking

Blue = sidewalk/pavement

Purple = property line

Green dot = transit stop

Magenta = multi-use trail

SANDWICH STREET – DETROIT TO MILL



Yellow = bike lanes

Green = parking

Blue = sidewalk/pavement

Purple = property line

Green dot = transit stop

Magenta = multi-use trail

SANDWICH STREET – MILL TO BROCK



Yellow = bike lanes

Green = parking

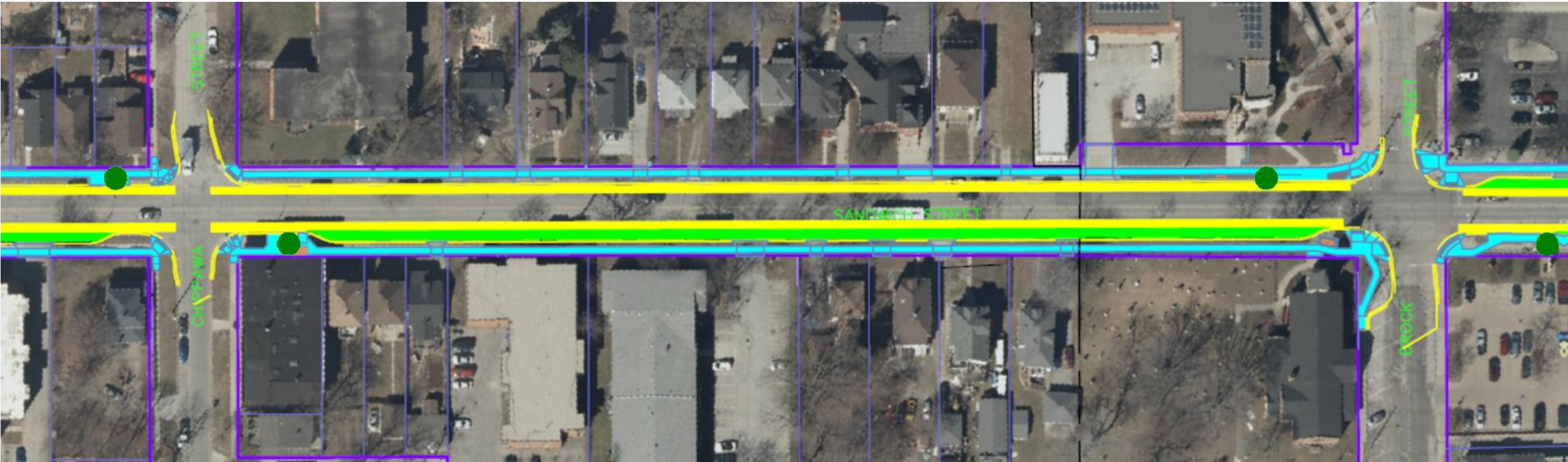
Blue = sidewalk/pavement

Purple = property line

Green dot = transit stop

Magenta = multi-use trail

SANDWICH STREET – BROCK TO CHIPPAWA



Yellow = bike lanes

Green = parking

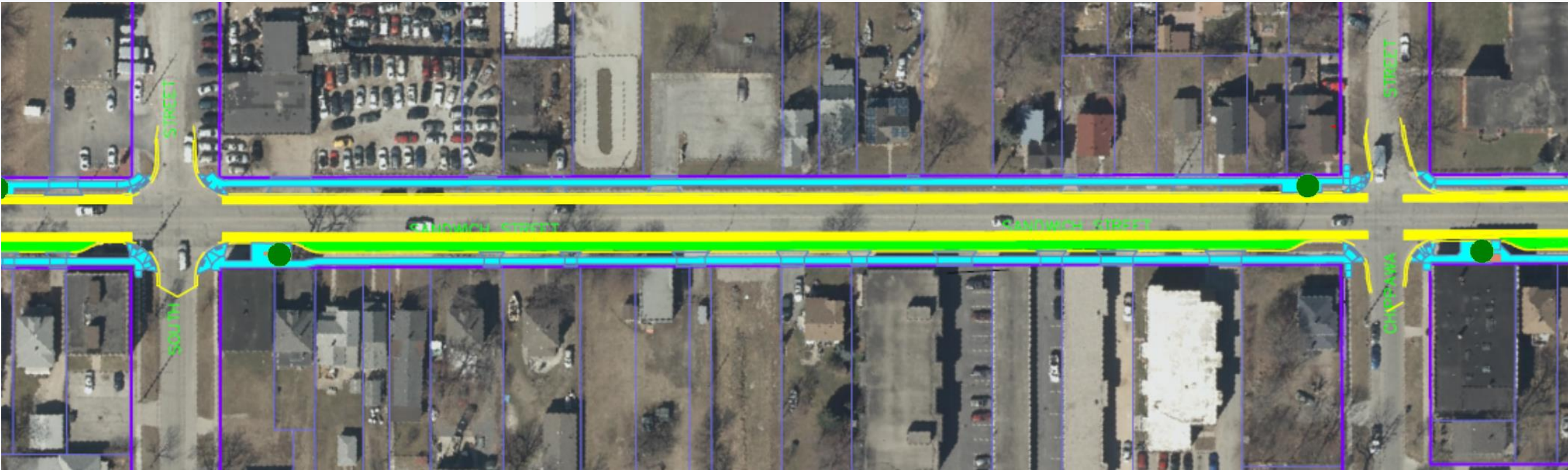
Blue = sidewalk/pavement

Purple = property line

Green dot = transit stop

Magenta = multi-use trail

SANDWICH STREET – CHIPPAWA TO SOUTH



Yellow = bike lanes

Green = parking

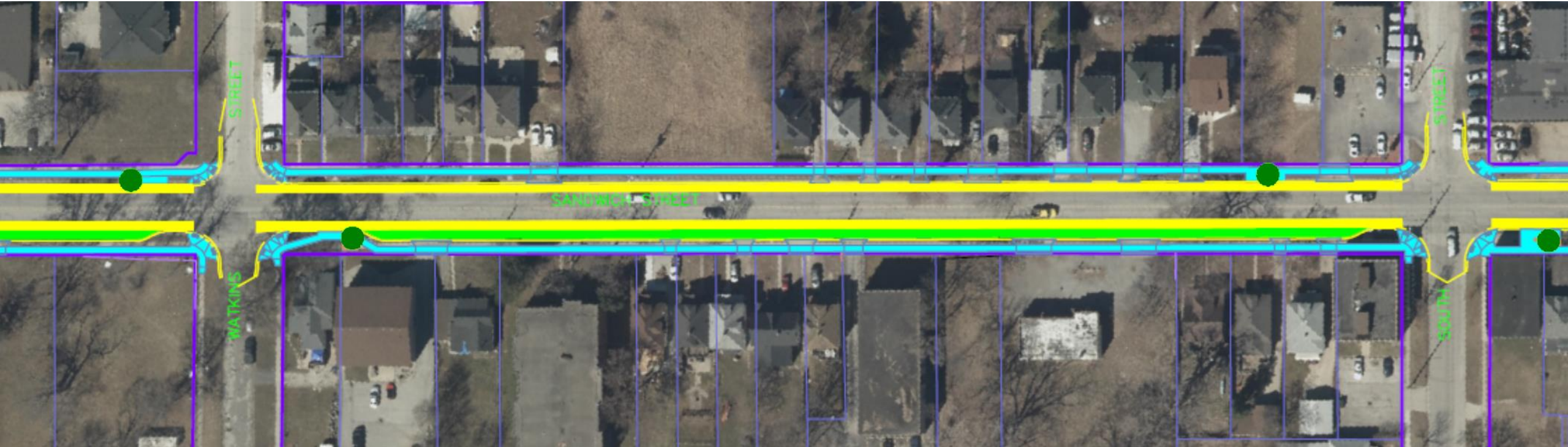
Blue = sidewalk/pavement

Purple = property line

Green dot = transit stop

Magenta = multi-use trail

SANDWICH STREET – SOUTH TO WATKINS



Yellow = bike lanes

Green = parking

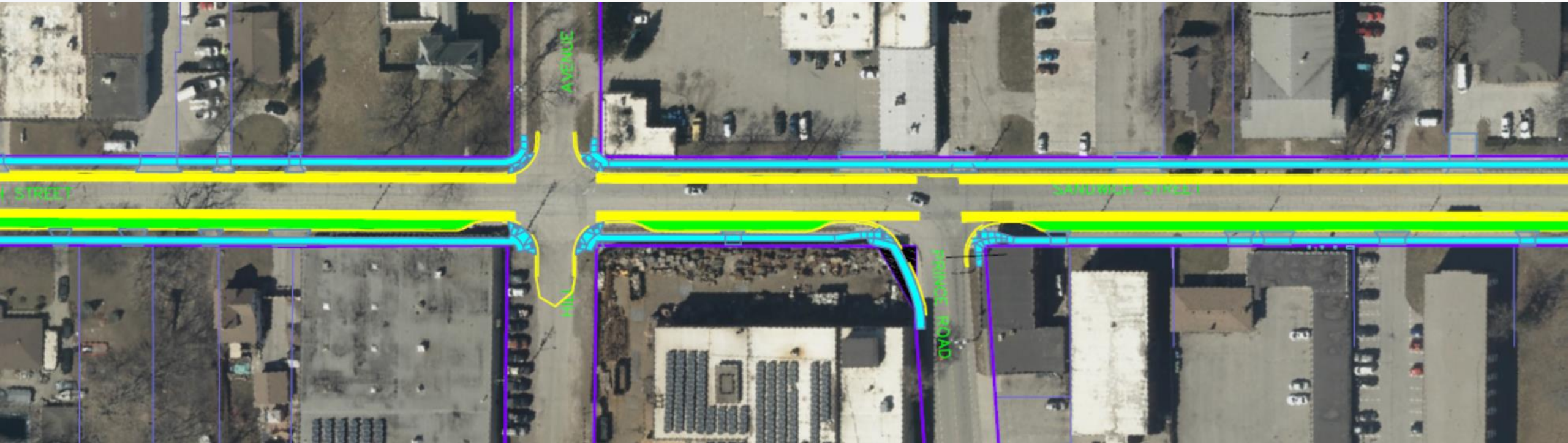
Blue = sidewalk/pavement

Purple = property line

Green dot = transit stop

Magenta = multi-use trail

SANDWICH STREET – WATKINS TO HILL



Yellow = bike lanes

Green = parking

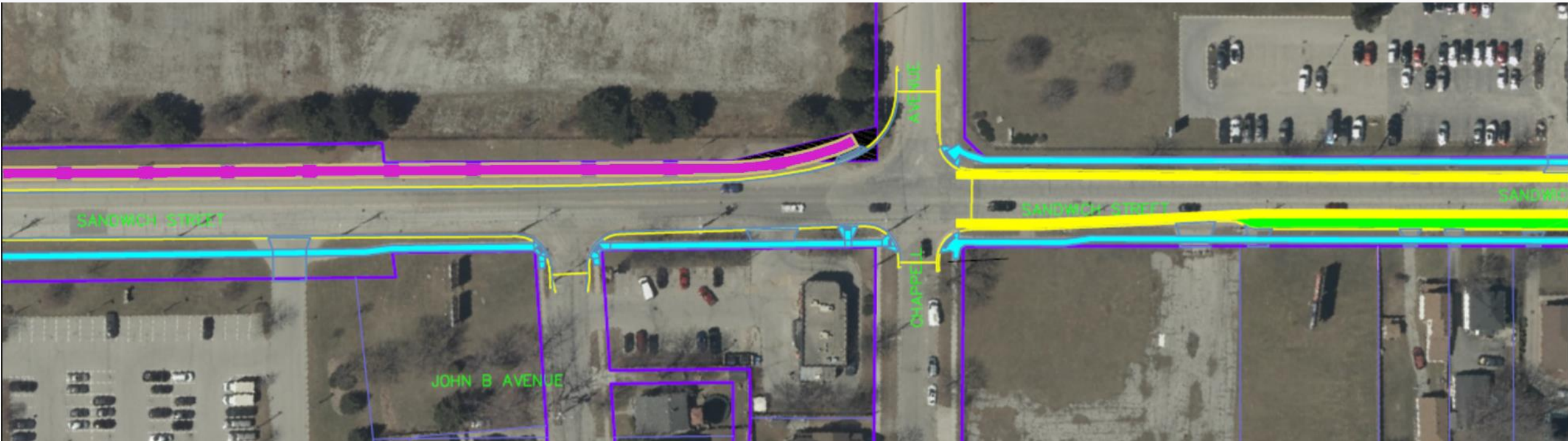
Blue = sidewalk/pavement

Purple = property line

Green dot = transit stop

Magenta = multi-use trail

SANDWICH STREET – HILL TO CHAPPELL



Yellow = bike lanes

Green = parking

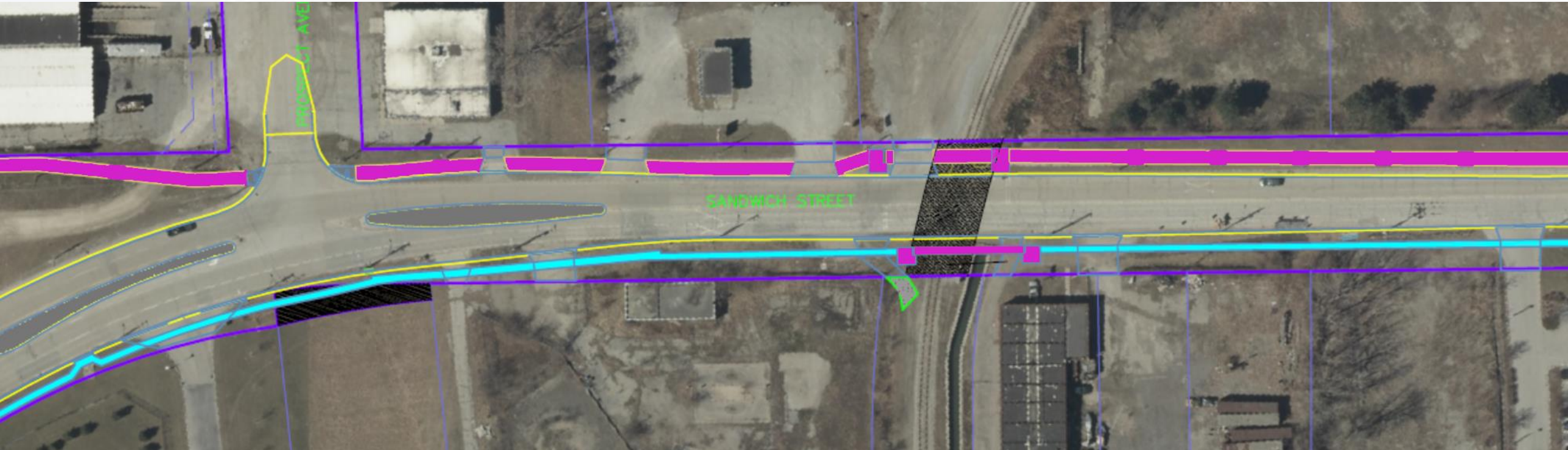
Blue = sidewalk/pavement

Purple = property line

Green dot = transit stop

Magenta = multi-use trail

SANDWICH STREET – CHAPPELL TO OJIBWAY



Yellow = bike lanes

Green = parking

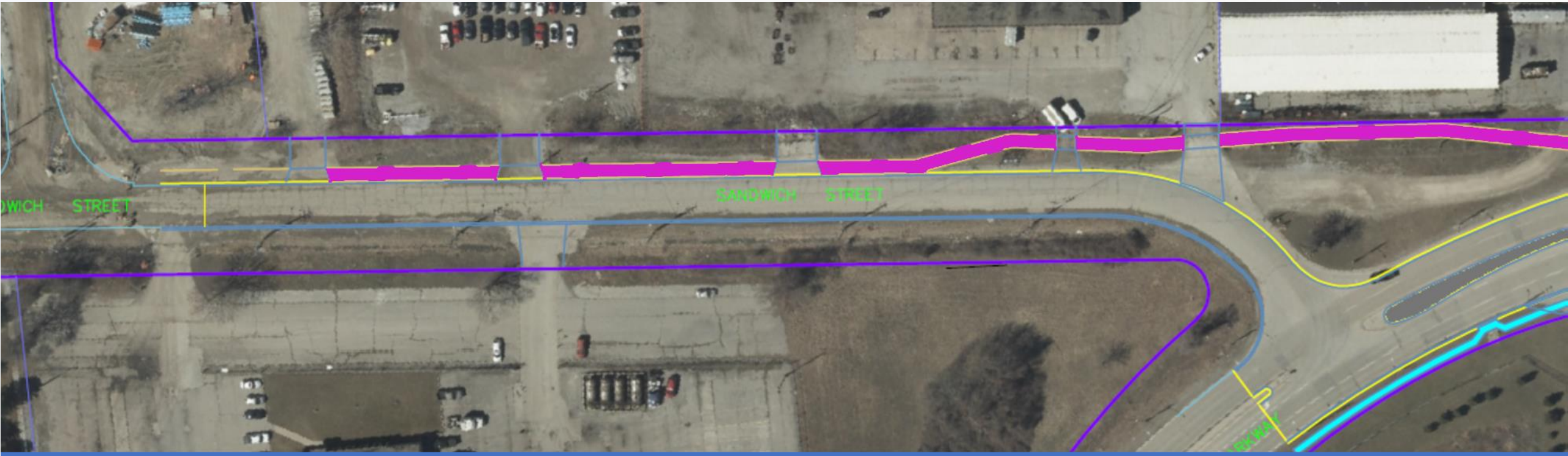
Blue = sidewalk/pavement

Purple = property line

Green dot = transit stop

Magenta = multi-use trail

SANDWICH STREET – SANDWICH MINOR



Yellow = bike lanes

Green = parking

Blue = sidewalk/pavement

Purple = property line

Green dot = transit stop

Magenta = multi-use trail

SANDWICH STREET \$1 MILLION ENHANCEMENTS



SANDWICH STREET \$1 MILLION ENHANCEMENTS



- \$1 million will be invested towards further enhancing the Sandwich Business Improvement Area.
- Part of the project's Community Benefit's Plan, Neighbourhood Infrastructure strategy.
- Project team is seeking community feedback on what enhancement categories to focus on.
- The team has met with City of Windsor departments for initial feedback

\$1 MILLION ENHANCEMENT SURVEY

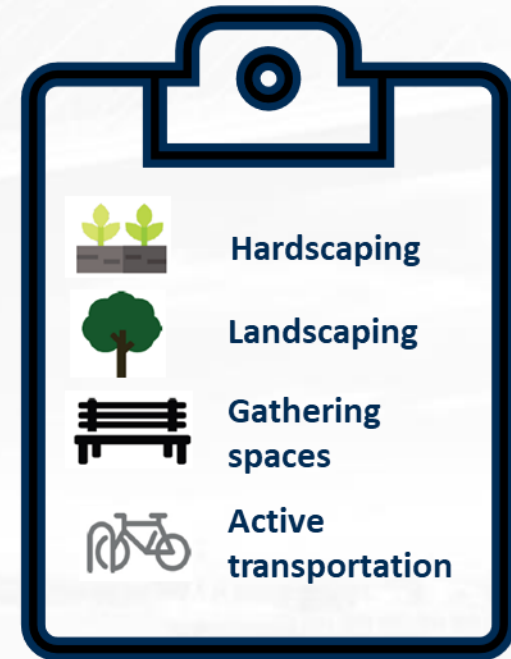
The project team is asking the community to help prioritize how the \$1 million should be prioritized through a survey.

The survey asks respondents to rank four enhancement categories:

- Hardscaping
- Landscaping
- Gathering spaces
- Active transportation

Survey can be taken online or a paper copy by request.

The survey closes on March 7, 2022.



ENHANCEMENT CATEGORIES



Hardscaping

Benches and street furniture



Gathering spaces

Seating areas of tables and benches alone, or in clusters to allow for community interaction



Landscaping

Potted plants or trees, flowering shrubs, planter boxes, tall grasses, or other vegetation



Active transportation

Bike racks, wayfinding signage, or bicycle repair stations

** Photos are illustrative examples only and do not reflect actual design*

HOW TO PARTICIPATE: ONLINE

Visit the project website under the “Construction” tab of the homepage to take the survey online

The image shows a browser window displaying the Gordie Howe International Bridge website. The main navigation menu includes: OVERVIEW, CONSTRUCTION, ENVIRONMENTAL, COMMUNITY, OPPORTUNITIES, and INFO CENTRE. The CONSTRUCTION tab is selected, and a dropdown menu is visible with the following items: MICHIGAN INTERCHANGE, CONSTRUCTION NOTICES, ROAD CLOSURES, 1000 DAYS OF CONSTRUCTION, and SANDWICH STREET RECONSTRUCTION AND \$1 MILLION STREETScape ENHANCEMENT. A second browser window shows the specific page for 'SANDWICH STREET RECONSTRUCTION AND \$1 MILLION STREETScape ENHANCEMENT'. The page content includes: 'As part of the Gordie Howe International Bridge project, just over three kilometres of Sandwich Street will be reconstructed by Bridging North America (BNA) and will stretch from south of the Rosedale Avenue roundabout past Ojibway Parkway to McKee Avenue. In addition to this work, \$1 million will be invested by the project's Community Benefits Plan to further enhance the Sandwich Business Improvement Area. Sandwich community members are invited to help the project prioritize areas of investment by completing a survey. [Learn more about \\$1 million enhancement survey](#)' A red arrow points to the survey link. Below the text are tabs for 'SANDWICH STREET RECONSTRUCTION', 'TRAFFIC AND CONSTRUCTION MITIGATION', and '\$1 MILLION ENHANCEMENTS'. Further down, it states: 'As part of the project's Community Benefits Plan, the project will invest an additional \$1 million to further enhance the Sandwich Business Improvement Area. The project team is collecting community feedback through a survey that will help determine how the \$1 million should be prioritized. Survey respondents are asked to rank these four categories of investment areas: Hardscaping: Benches, planter fences, and waste receptacles.'

Gordie Howe
International Bridge
project virtual t

HOW TO PARTICIPATE: PAPER COPY

SANDWICH STREET \$1 MILLION ENHANCEMENT SURVEY
You can return a scan or photo of your completed survey by email to info@wdbridge.com or by dropping off the paper copy at the Windsor Public Library John C. Muir Branch at 363 Mill Street, Windsor, Ontario.

Date: _____

(Optional) Name – Please print: _____

(Optional) Email: _____

(Required) Postal Code: _____

All comments received are appreciated, however, only comments from Canadian residents will be considered in accordance with Canadian Environmental Assessment Act requirements.

Please rank the following four investment categories by most important to least important using numbers 1, 2, 3 and 4:
One (1) = most important.
Four (4) = least important.

___ Hardscaping ___ Landscaping ___ Gathering Spaces ___ Active Transportation

Find examples of the four categories by referencing the previous page, or by visiting gordiehoweinternationalbridge.com and selecting the "Sandwich Street" tab under the "Construction" section of the website.

The personal information on this form is collected for the purpose of communicating with individuals external to the Institution with respect to general inquiries and response, distribution of public awareness and communications material, dissemination of reports, publications, and other documentation on matters relating to the Gordie Howe International Bridge project.

The personal information is collected



- Request a paper copy:
 - by emailing info@wdbridge.com, or
 - by calling 1-844-322-1773.
- Complete surveys can be submitted by:
 - scanning or taking a photo and emailing info@wdbridge.com
 - drop it off at the Windsor Public Library John C. Muir Branch at 363 Mill Street, Windsor, Ontario.

FOLLOWING THE SURVEY: NEXT STEPS



- The project team will review the responses and identify the areas most prioritized by the community
- While the overall street design will include features from all four investment categories, additional funding will focus on those areas most important to the community
- The project team will work with the City of Windsor to ensure their approval of designs
- Designs are anticipated to be publicly shared in summer 2022.
- Construction of the BIA district is anticipated for 2023

QUESTION AND COMPLAINT PROCESS

Questions and complaints can be addressed to:

WDBA

Public inquiry line: 1-844-322-1773

Info@wdbridge.com



LEARN MORE

 gordiehoweinternationalbridge.com

 1-844-322-1773

 @gordiehowebrg

 @gordiehowebridge

 Gordie Howe Bridge

 @gordiehowebrg

 WDBA-APWD

