



PONT INTERNATIONAL  
**GORDIE**  
**HOWE**  
INTERNATIONAL BRIDGE

## Meet the Artist: Sara Graham

March 9, 2021



# Integrating Aesthetics

## Themes identified through the Detroit River International Crossing Study:

- Historic
- Friendship
- Gateway
- Modern
- Native vegetation



- An impressive and inspiring new gateway symbol for Canada and US
- Blending regional values and sound engineering

# Public Art Program

Three components of Public Art will be incorporated into the Gordie Howe International Bridge project:

- dramatic and dynamic bridge lighting at night
- an artistic building facade at the Canadian Port of Entry
- a standalone Indigenous art commission to be completed by a Canadian Indigenous artist

A call for artists has been completed and each commission is beginning the artist selection process.



# Historical and Cultural Recognition

The Public Art program is part of a larger effort to incorporate Public Art and other forms of cultural and historical recognition into the project, based on continued community engagement.



# Objectives for Commission: Design for Exterior Cladding

- Noted Canadian artist to be engaged
- Positive imagery
- Sense of welcome
- Colour
- Improve the façade of the Energy Centre by integrating thinking of the artist
- Approach: inscribed imagery or bas relief achieved using form liners

# CANADIAN PORT OF ENTRY



# Location of Public Art Commission 2



# Location of Public Art Commission 2





# Precedent: Conventional Form Liner



Merida Convention Centre, Spain, by Nieto Sobejano

# Precedent: Colour Enhancement



Pigment in concrete mix



Stain applied post pour (for consideration)

# Artist: Sara Graham

- BFA (1997): Nova Scotia College of Art and Design
- MFA (2006): University of Guelph.
- Current Resident Artist for the City of Port Moody
- Recent Public Art commissions and exhibits:
  - Public Art – Richmond BC (2020)
  - Surrey Art Gallery (2018)
  - Confederation Centre for the Arts (2015)
  - Kitchener-Waterloo Gallery (2015)
  - Museum London (2010).
- Graham is specifically engaged in cross-disciplinary artistic practices and theoretical approaches that incorporate philosophical, cultural, sociological and architectural criticism of the nature and condition of the city and city life. One of Graham's central engagements in her practice is in the mapping of systems and networks and how their interconnectivity affects everyday lives

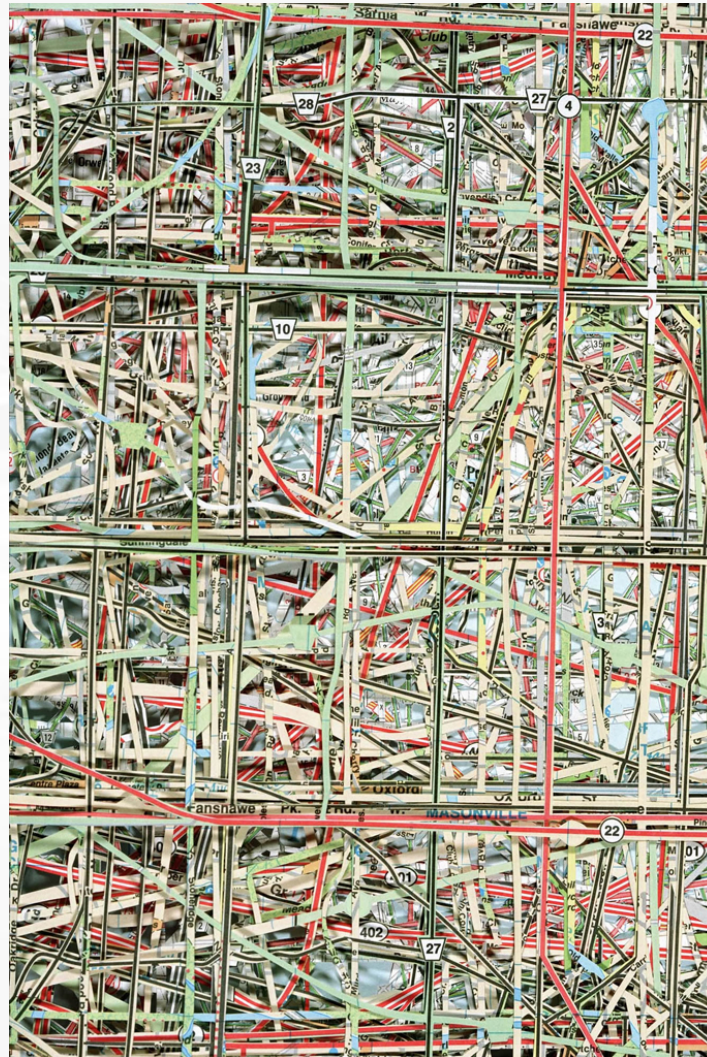
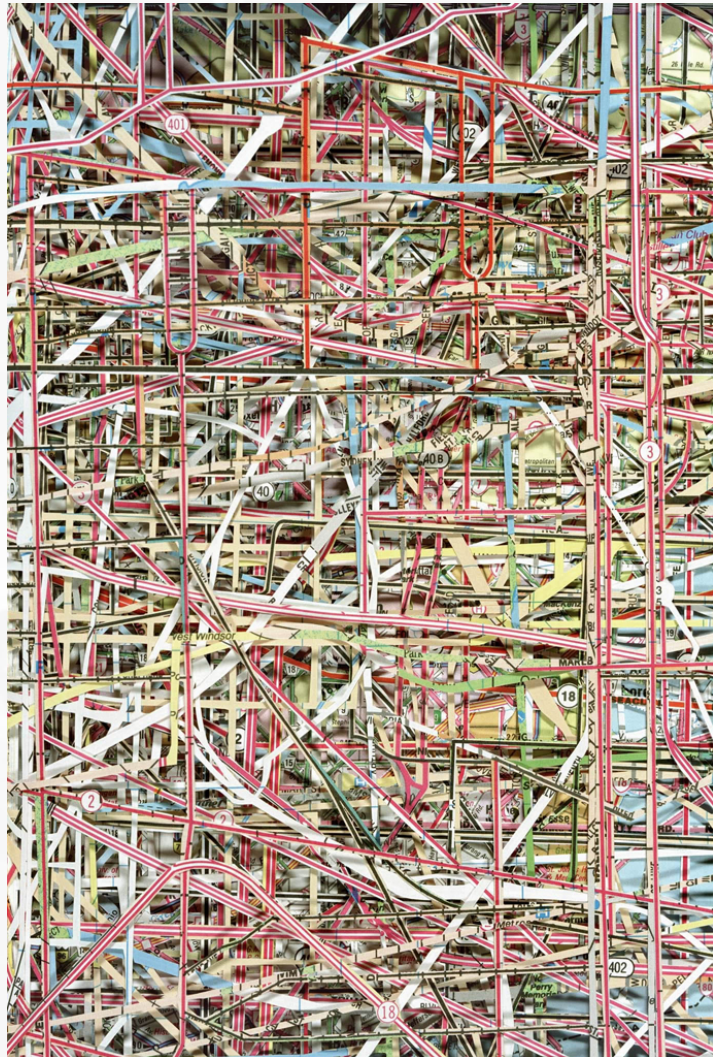




**Artist: Sara Graham**

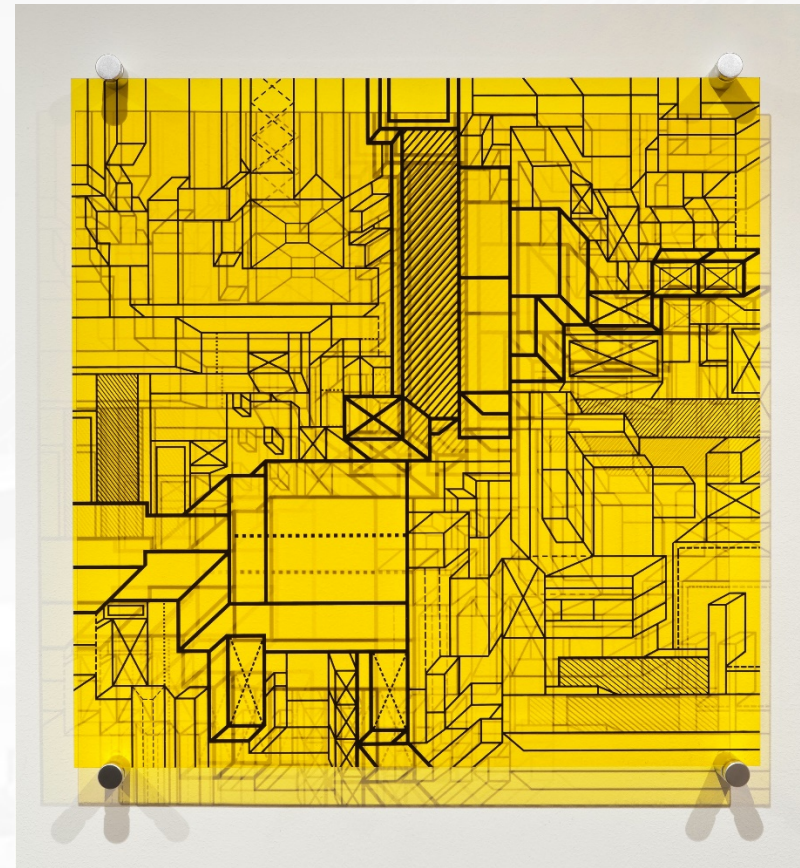
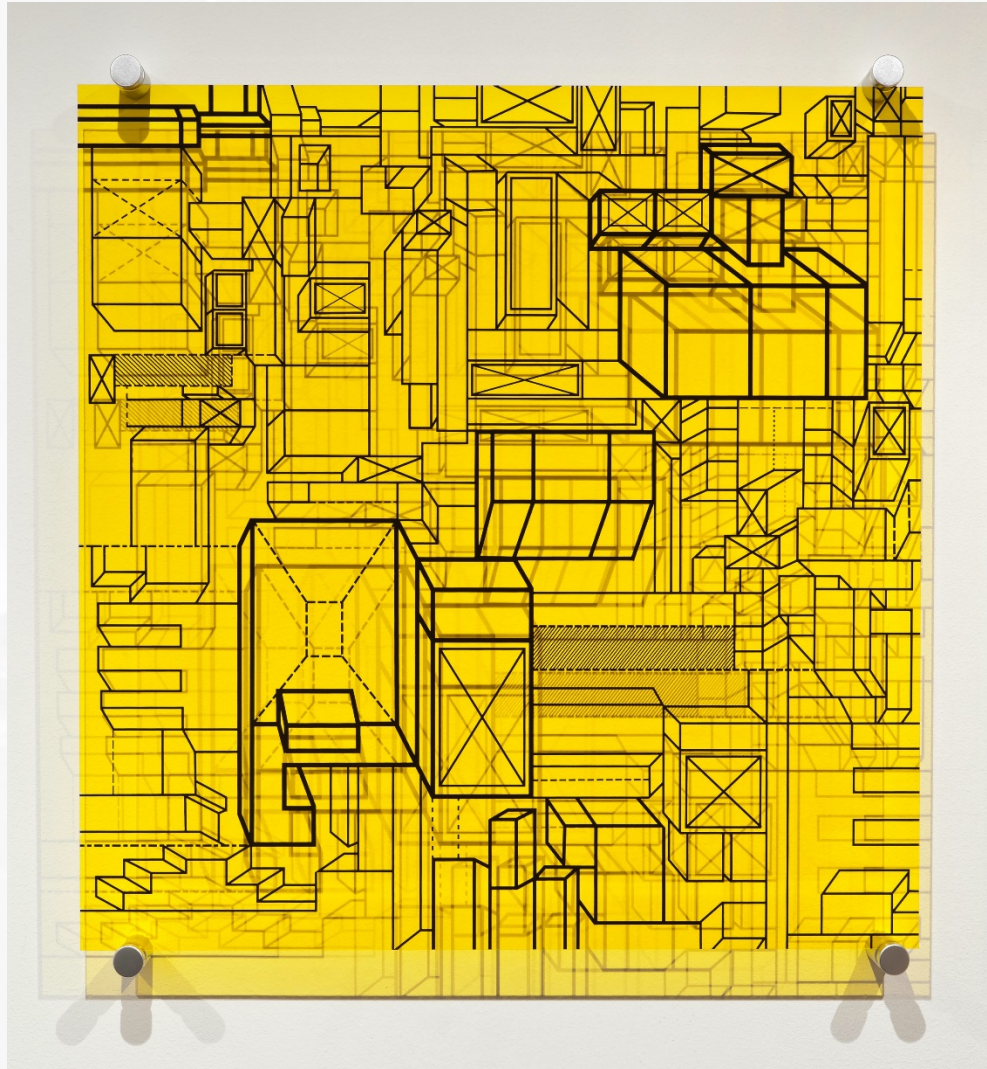
*Richmond Plats, 2020*

# Mapping



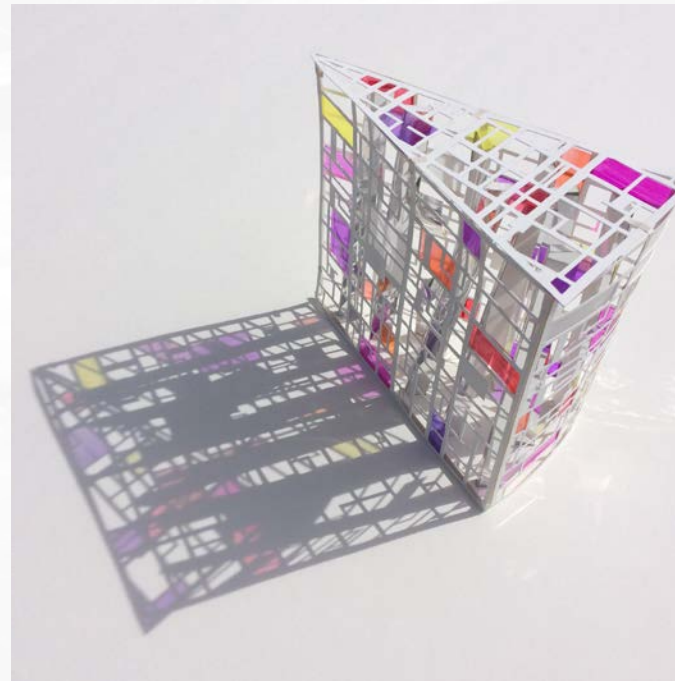
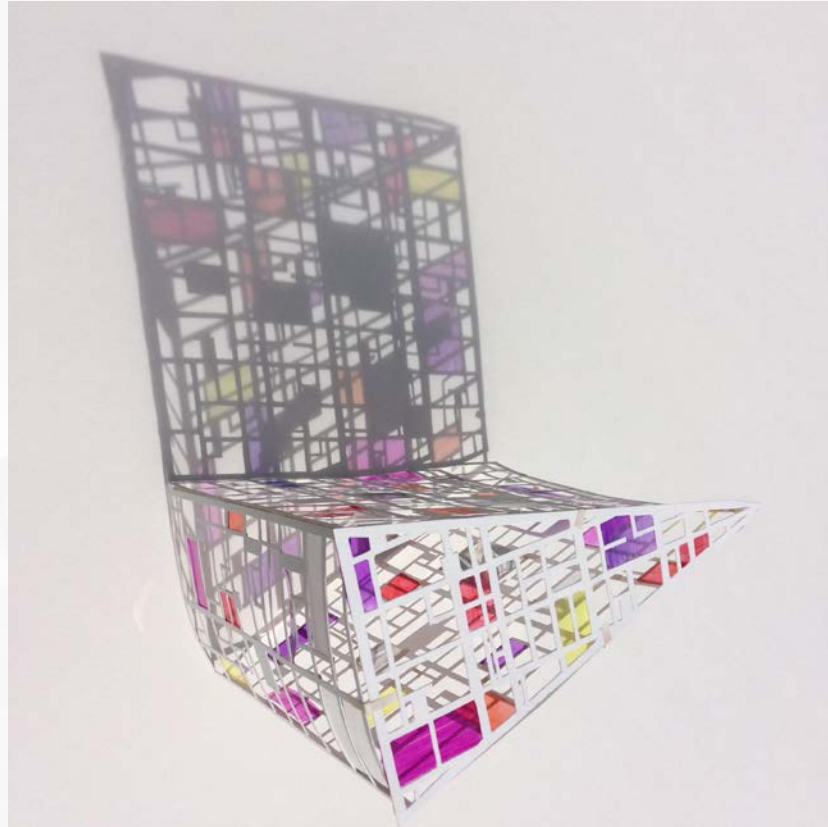
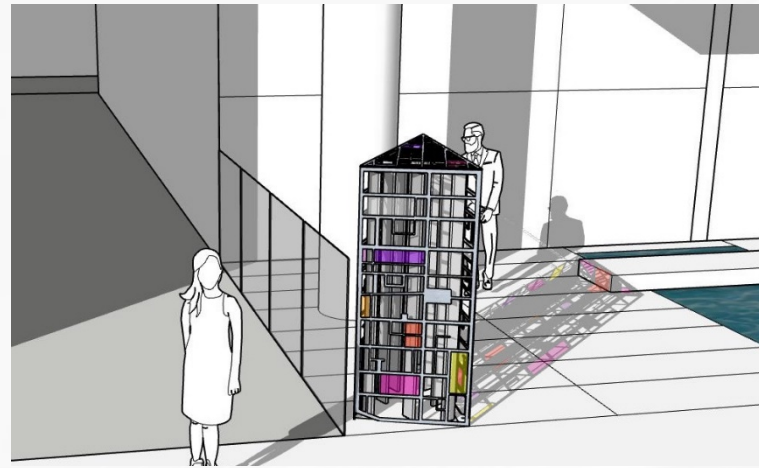
*StreetFinder: Windsor, 2012*  
*StreetFinder: London, 2012*  
*Photograph mounted on dibond,*  
*121.3 x 81.3 cm*

# Mapping



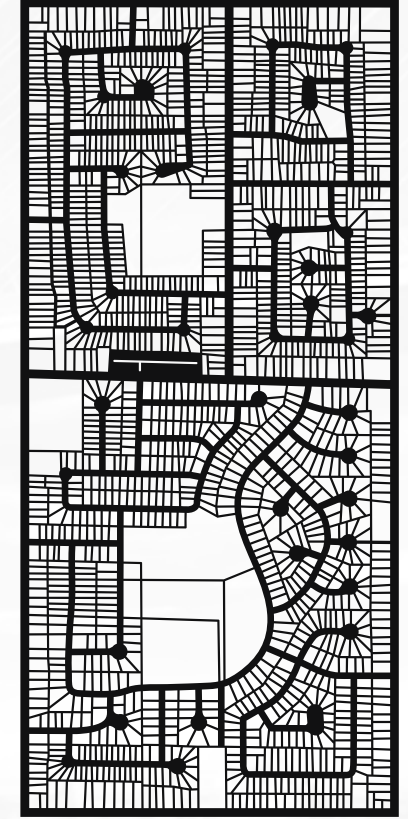
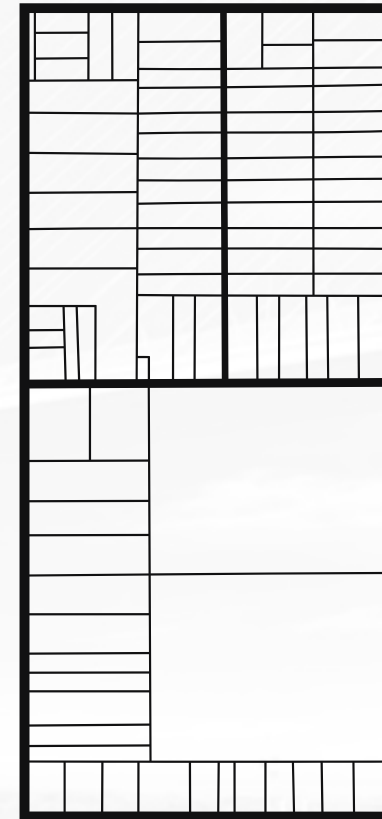
*London Location Map 04, 2010  
London Location Map 03, 2010  
silkscreened plexiglass, aluminum fittings, 51 x  
51cm  
Photo credit: Toni Hafkenscheid*

# Mapping



*Shortlisted artwork maquette for  
Residential Development,  
Toronto, ON*

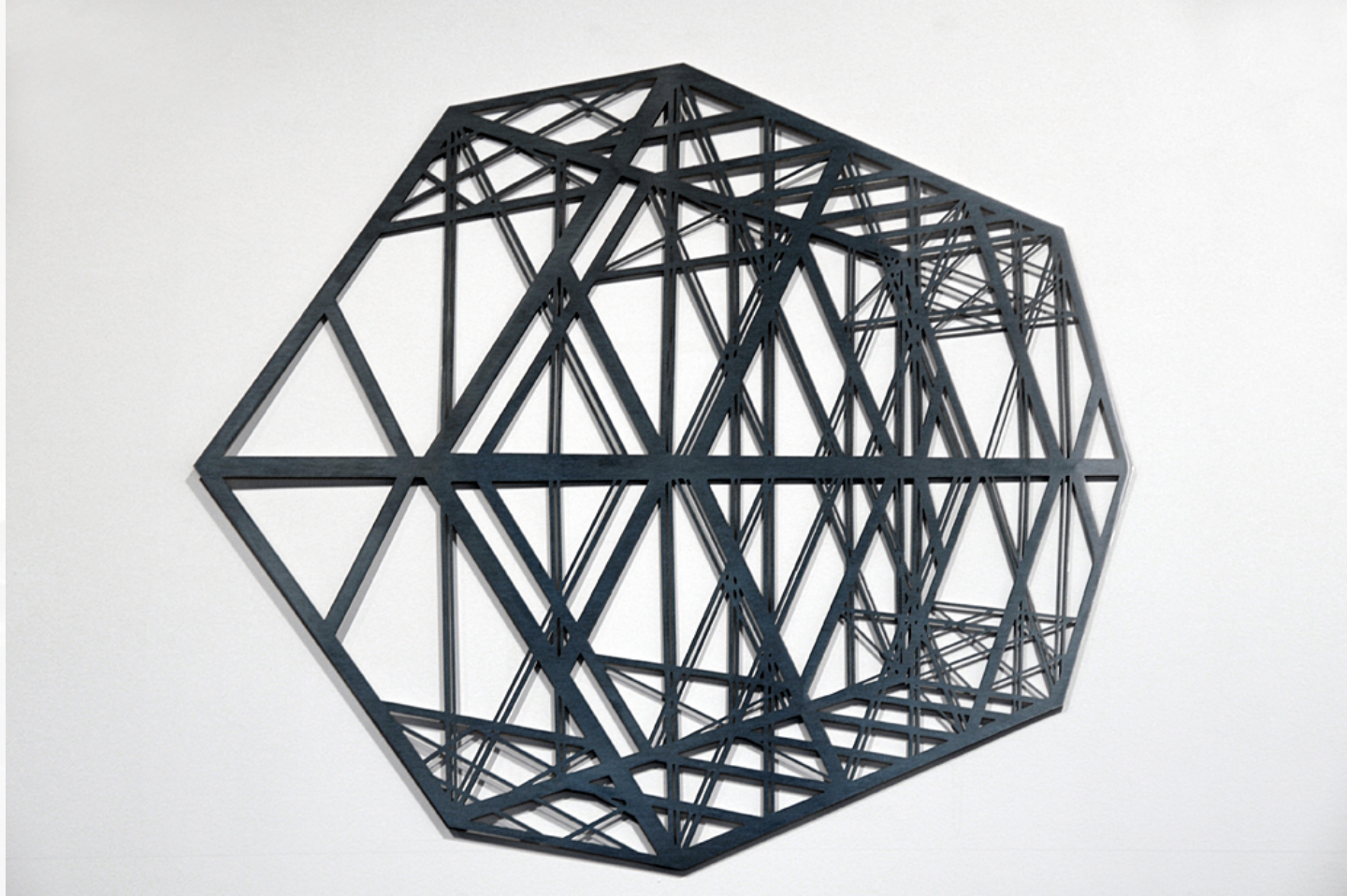
# Mapping



*Richmond Plats, 2020  
Anodized watercut aluminum,  
acrylic sheet, LED lightbox  
121.3 x 81.3 cm*

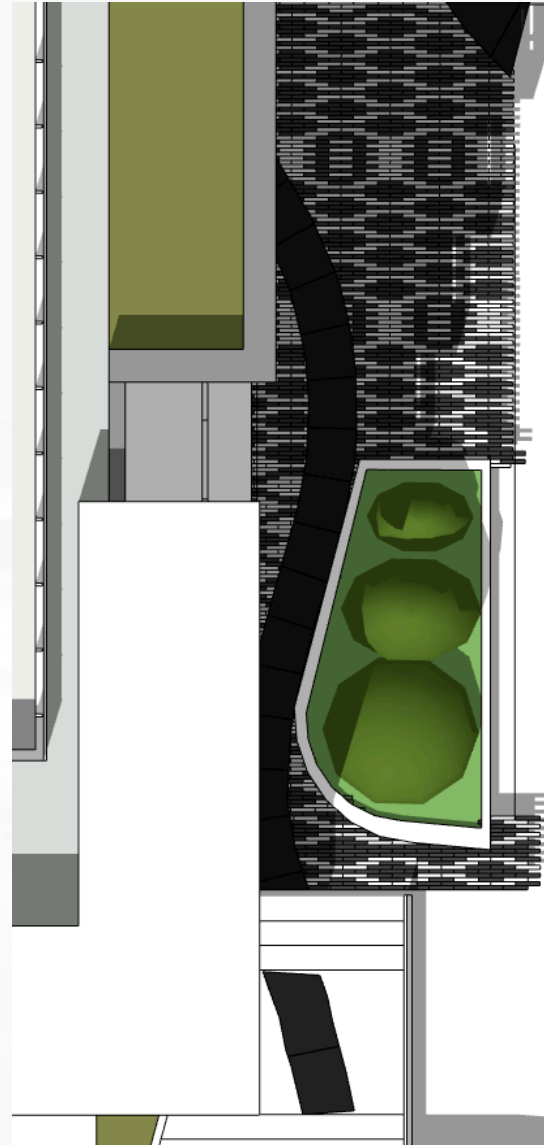
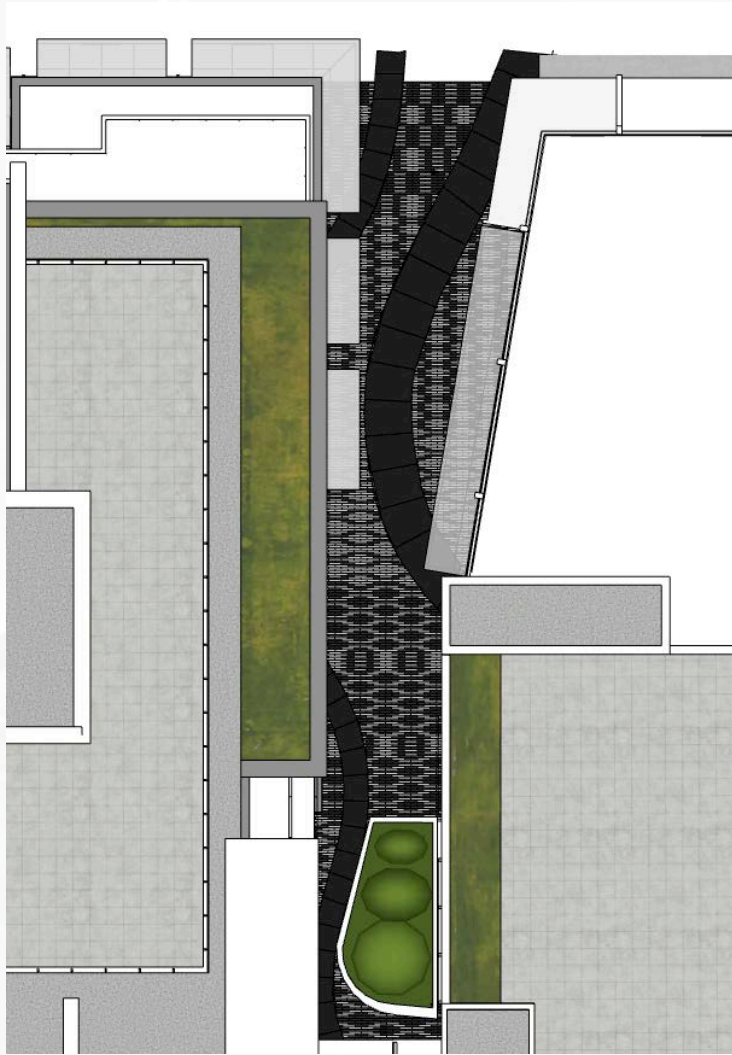


# Line



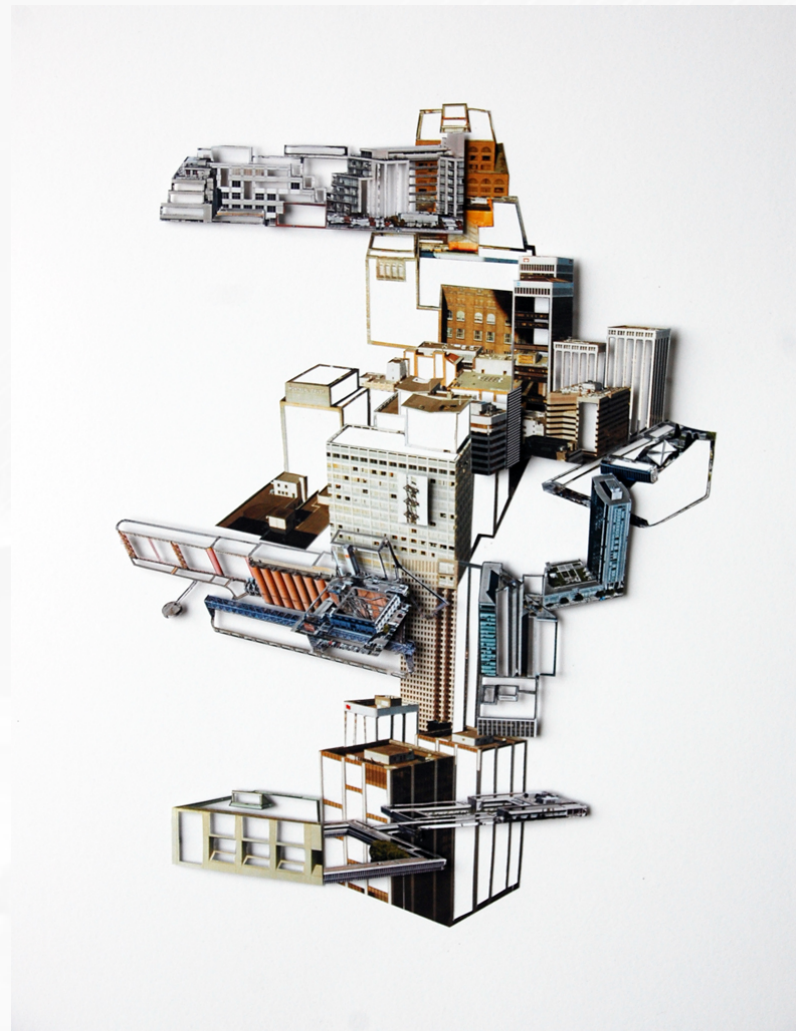
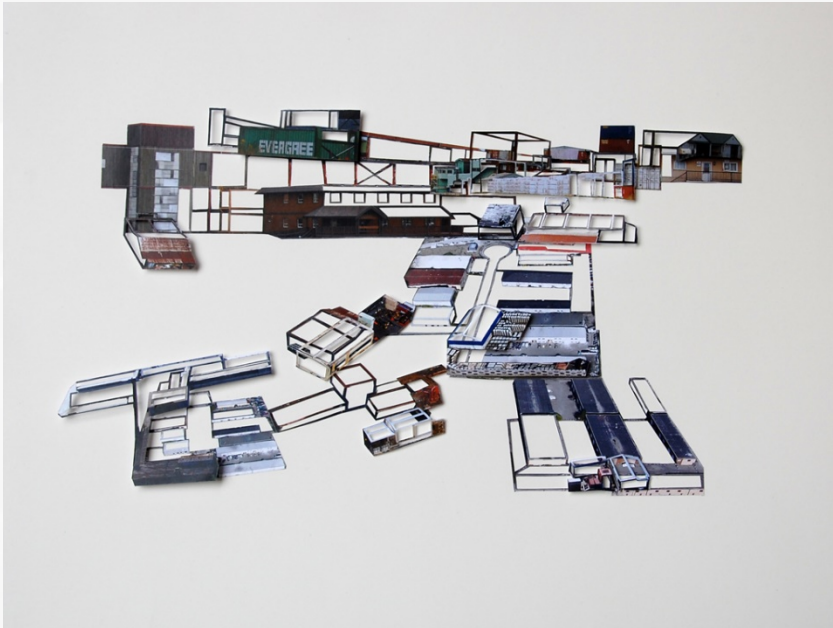
*London Bridge (Meadowlily Railroad Bridge), 2010,  
water-cut brushed steel,  
135.9 x 118.1 x 3.2cm*

# Line



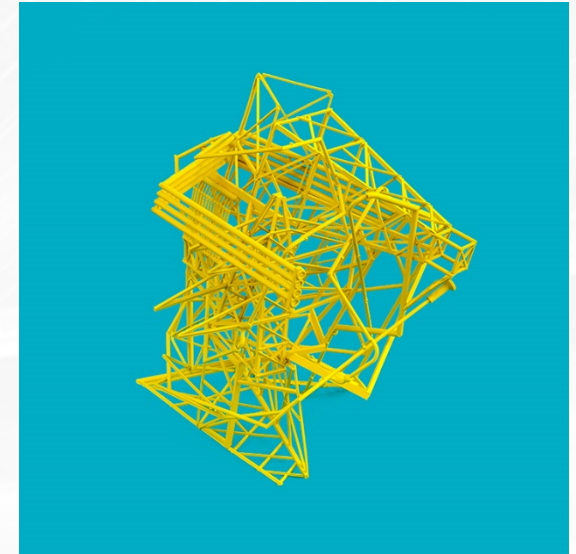
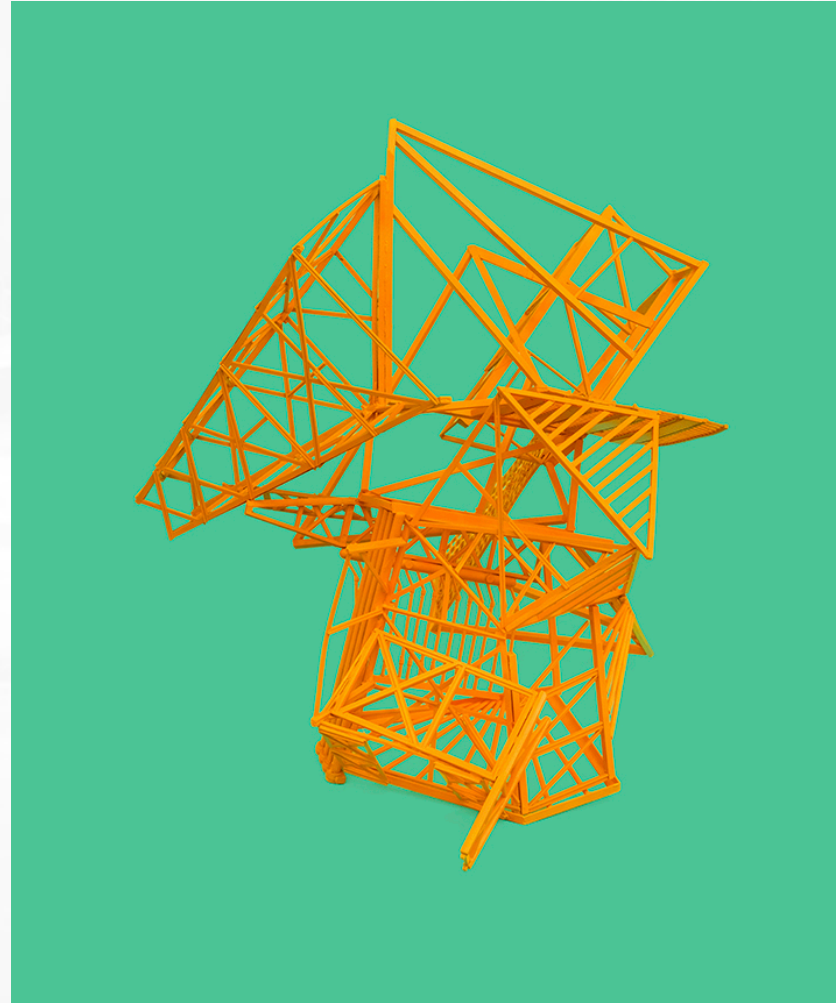
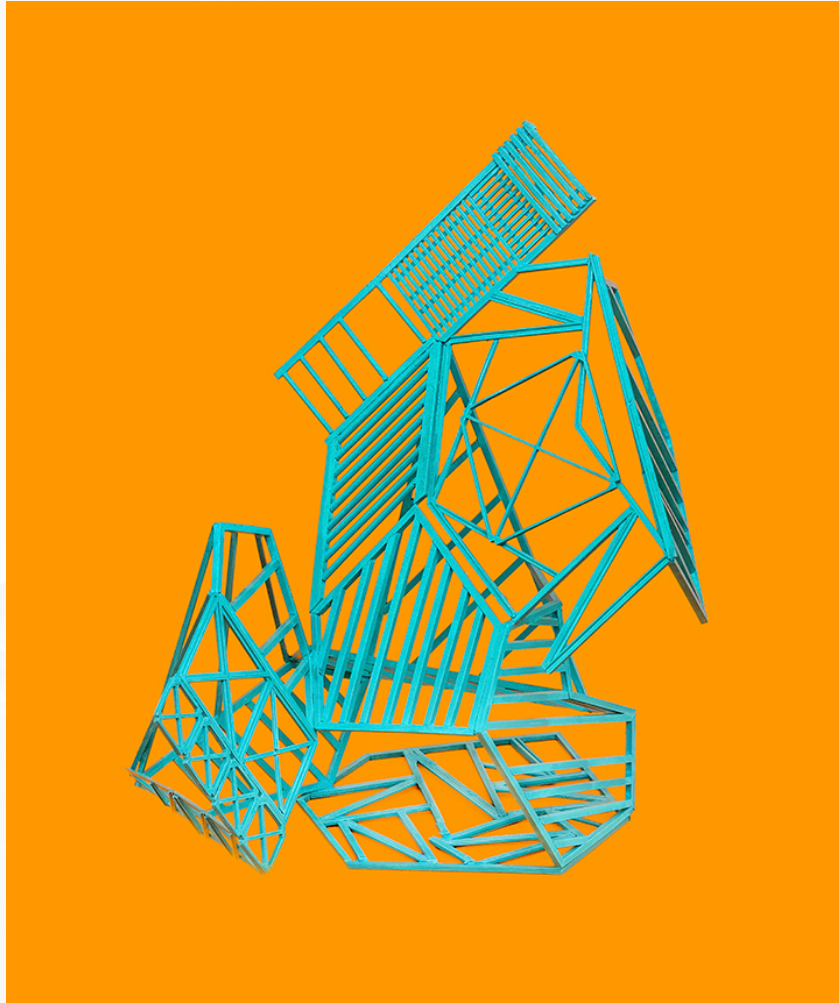
*Shortlisted proposal for Residential Development, North Vancouver, BC, 2019.*

# Line



*Rebuilding Canada, Vancouver (Downtown), 2016  
Thornton Railyard, Surrey (02), 2015  
Thornton Railyard, Surrey (02), 2015  
Collage on paper, 35.5 x 45.7 cms*

# Line




*Study for Organizational Structures, 2020, Archival pigment print mounted on aluminium, 50.8 x 50.8 cm*

# How to Share Comments

- Public comment period: **March 9, 2021, to March 16, 2021**
- Return the comment card provided at time of registration **by email to [info@wdbridge.com](mailto:info@wdbridge.com)** by midnight on March 16, 2021
- Comment cards are also available at [GordieHoweInternationalBridge.com](http://GordieHoweInternationalBridge.com)
- Comments will be shared with Ms. Graham for her consideration on March 17, 2021
- Final art concept will be shared publicly at a later date
- All comments received are appreciated, however, only comments from Canadian residents can be considered in accordance with the Federal Canadian *Environmental Assessment Act* Screening Report completed for the project.

# LEARN MORE

 [gordiehoweinternationalbridge.com](http://gordiehoweinternationalbridge.com)

 1-844-322-1773

 @gordiehowebrg

 @gordiehowebridge

 Gordie Howe Bridge

 @gordiehowebrg

 WDBA-APWD

