

# Gordie Howe International Bridge Public Information Meetings



Detroit Michigan  
November 15, 2016



# Introduction

1. WDBA and Partners
2. Components of the Project
3. Activities in the US
4. Activities in Canada
5. Project Procurement Process
6. Opportunities for Continued Engagement and Consultation

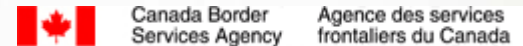


## Windsor-Detroit Bridge Authority is:

- A not-for-profit Canadian Crown corporation created in 2012
- Reports to Parliament through the Minister of Infrastructure and Communities
- Manages the procurement process for the design, construction, financing, operation and maintenance of the new bridge through a public-private partnership (P3)
- Will oversee the work of the P3 partner and will manage the concession agreement and payments



# Who's Involved



U.S. Customs and Border Protection





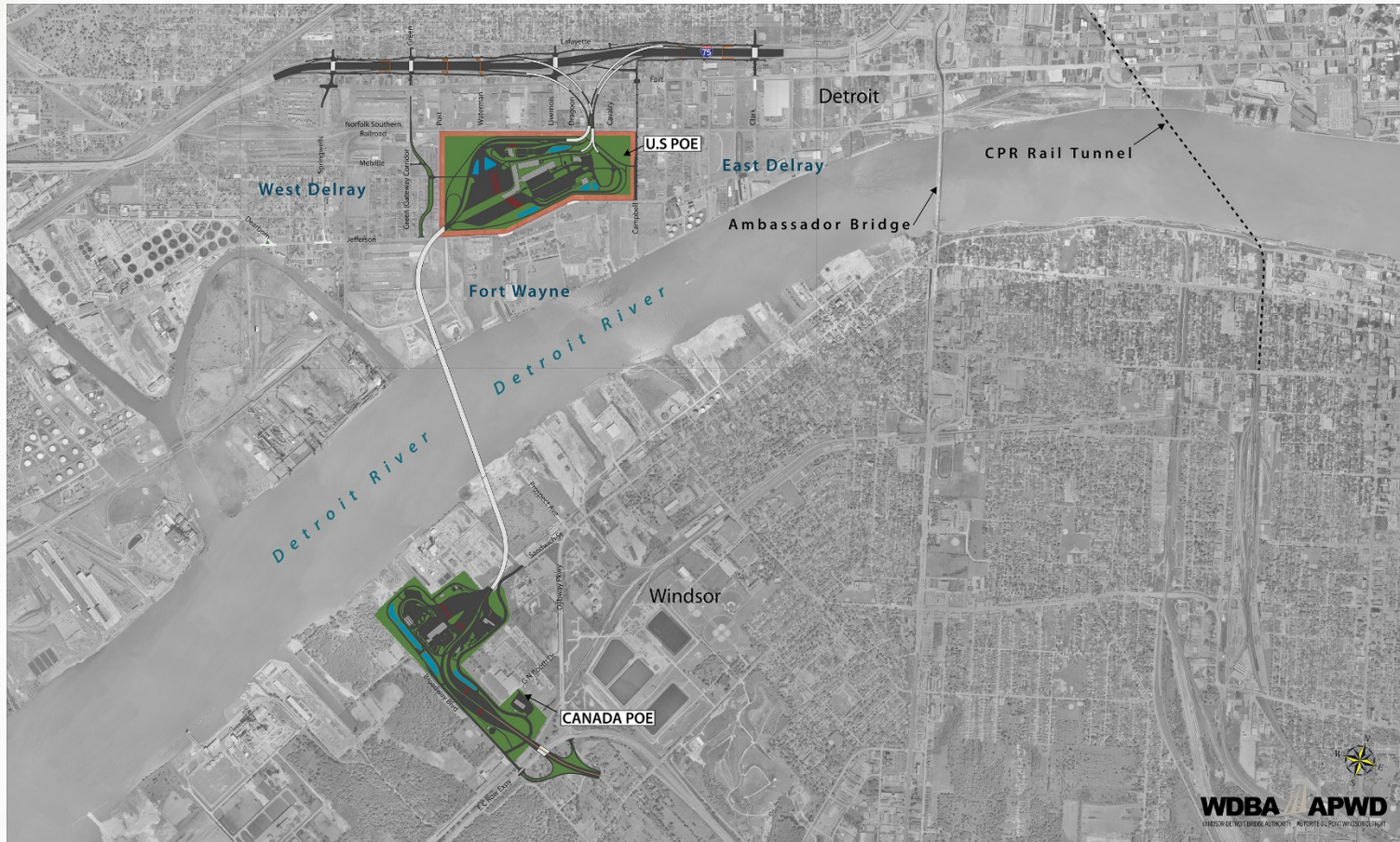
# Project History

Timeline	Activity
2001-04	Planning/Need and Feasibility Study
2005-09	Coordinated environmental assessment and economic impact studies – US and Canadian sides Canada determines that the Project will not have significant environmental impact, with mitigation measures US Record of Decision obtained
2008-12	Canada land acquisition begins Preliminary Canadian and US Port of Entry design and other preparation work begins
2012	Canada-Michigan Crossing Agreement signed WDBA incorporated
2013	Presidential Permit issued
2014	A Board of Directors and President and CEO are appointed for WDBA Members are appointed to the International Authority Board US Coast Guard Bridge Permit received
2015	International Authority approves United States land acquisition Selection of key advisor firms to assist with engineering, technical and legal work Crossing officially named Gordie Howe International Bridge Start of Early Works at Canadian Port of Entry Launch of the P3 process with the Request for Qualifications More than 40 positions filled at WDBA Windsor Office
2016	RFQ short-listed respondents were announced Issuance of the RFP to proponents More than 50 positions filled at WDBA Windsor office

# COMPONENTS OF THE PROJECT



# Gordie Howe International Bridge Project



**WDBA APWD**  
WINDSOR-DETROIT BRIDGE AUTHORITY | AUTORITÉ DU PONT WINDSOR-DETROIT



# ACTIVITIES IN THE US





# Historical and Archaeological Documentation

The Delray community has a rich history, hosting several historic sites, including Historic Fort Wayne.

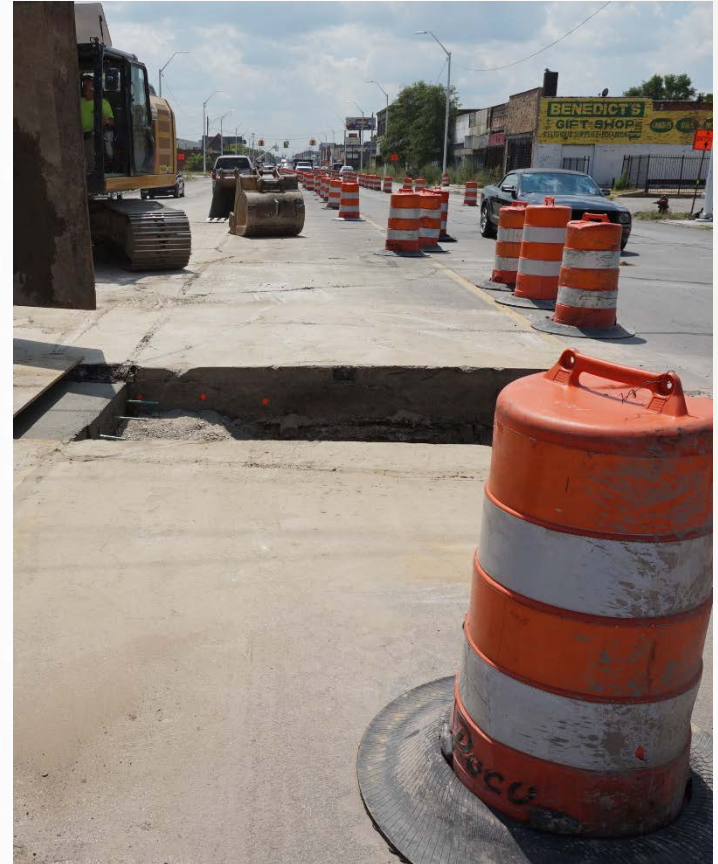
Current activities include preparing a report summarizing the documentation and recording of information on Kovacs Bar and St. Paul AME Church.

In the event of an inadvertent find, MDOT and the State Archaeologist agree the inadvertent finds protocol will be implemented for all stages and areas of construction.



# US Utility Relocation

- MDOT is working with utilities and other partner agencies to identify high priority areas where utilities require relocation.
- Once complete, the community will enjoy new utility infrastructure to support residential and commercial needs.
- Private utility relocation work will occur with no anticipated service interruptions.



# US Property Acquisition

638 land parcels are required for the Gordie Howe International Bridge project.

To date, MDOT has acquired and/or has control of nearly 50 per cent of the required parcels.

It is anticipated that all business offers will be issued by December 31, 2016.

Relocation assistance and support will continue to be provided.

The condemnation process will be carried out as needed on a parcel-by-parcel basis.

## Property by the Numbers

638 total land parcels required

211 residential relocations required

36 business relocations required

50 per cent of total property acquired/in control

57 structures demolished or in demolition process as of November 4, 2016





# Demolitions and Community Security

- Demolition occurs as quickly as possible to the date a property is vacated.
- Within 12 hours of being vacated, a structure is boarded up, 24-7 security is put in place, utility disconnects are requested and asbestos and hazardous material surveys are completed.
- Additional mitigation measures:
  - Advance notification of scheduled demolition to neighbours
  - Dust suppression measures implemented
  - Traffic and mobility considerations for businesses and residents





# Informing the Community

- WDBA recognizes there will be disruptions to residents and visitors to the Delray area due to demolition and utility relocation work.
- English and Spanish construction notices posted to [www.wdbridge](http://www.wdbridge) each week to highlight planned work
- Paper copies available at various locations within Delray, including CHASS, Bridging Communities, La Sed and others.



# ACTIVITIES IN CANADA



# Early Works: Preparing the Canadian Site



# Canadian Property Acquisition

- WDBA provides support to Infrastructure Canada, who is responsible for Canadian property acquisition.
- Most required land has been acquired and discussions continue on the remaining properties.





# PROJECT PROCUREMENT PROCESS



# What is a P3?

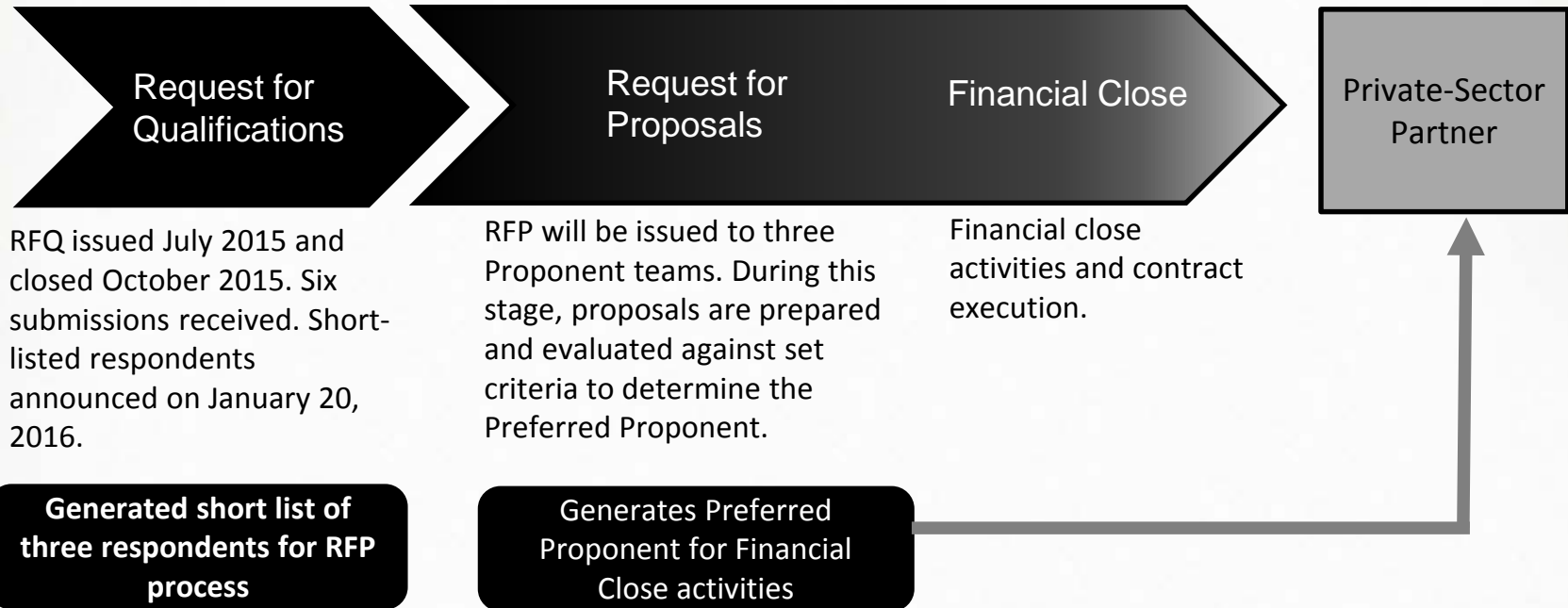
- P3 stands for **Public-Private Partnership**, a co-operative venture between a public sector entity and a private sector partner for the provision of infrastructure or services.
- The partnership is built on the expertise of each partner that best meets clearly defined public needs, through the most appropriate allocation of resources, risks, and rewards.
- The Gordie Howe International Bridge will be designed, built, financed, operated and maintained using a P3 model overseen by the WDBA.



# Procurement Process Update

WDBA's procurement process is designed to choose a suitable private sector partner with the skills, experiences and resources necessary to design, build, finance, operate and maintain the Gordie Howe International Bridge Project.

Three milestones in the partner selection process:



# Successful Proponent Responsibilities

Project Components	Design	Construction	Finance	Operations & Maintenance	Life Cycle, Maintenance Rehabilitation & Handover Requirements
Bridge	X	X	X	X	X
Canadian POE (including Tolling Infrastructure)	X	X	X	X*	X
United States POE	X	X	X	X*	X
Michigan Interchange	X	X	X	MDOT	MDOT

\* CBSA and CBP will operate the Canadian POE and United States POE, respectively, and carry out customs inspections and other border-related functions. Project Co will be responsible for custodial functions and other building-related operations and maintenance.





# Business-to-Business (B2B) Meetings

B2B meetings will provide an opportunity for local contractors, suppliers and service providers to network with the potential constructors and operators of the Gordie Howe International Bridge project.



## **BUSINESS-TO-BUSINESS WINDSOR**

**November 30, 2016**

**St. Clair Centre for the Arts, Skyline Room**

**201 Riverside Drive West**

**Windsor, ON N9A 5K4**

**4:00 p.m – 8:00 p.m.**

## **BUSINESS-TO-BUSINESS DETROIT**

**December 1, 2016**

**Cobo Center, Third Floor, Room 330, A/B**

**1 Washington Boulevard**

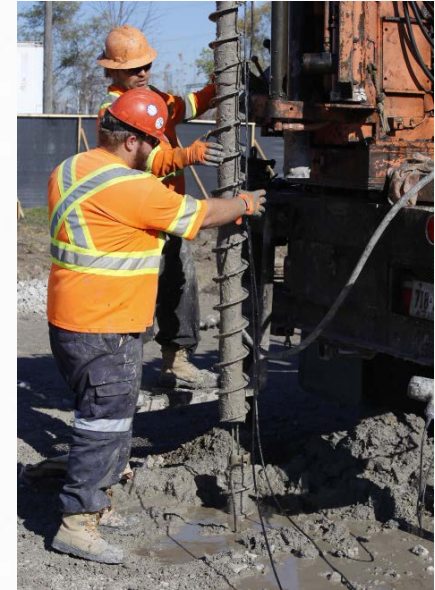
**Detroit, MI 48226**

**9:00 a.m. – 1:00 p.m.**



# Economic Opportunities: Jobs

- The project is a significant economic opportunity for local workers, suppliers, and contractors.
- Industry knowledge has demonstrated that private sector teams will seek local partners because of the advantages this would provide such as:
  - proven experience of local contractors in area construction projects
  - knowledge of local conditions and experience with the local labour pool
  - not having to provide travel/accommodation expenses for out-of-town workers.



# OPPORTUNITIES FOR CONTINUED ENGAGEMENT AND CONSULTATION



# US Environmental Commitments

Commitments on the US side are documented in the Environmental Impact Statement, Green Sheet and Memorandum of Agreement.



## Design and Construction

- Visual Effects
- Noise
- Lighting
- Infrastructure
- Pedestrian and bicycle bridges (I-75)
- Vibration
- Water Quality
- Traffic Maintenance
- Tree Removal/Landscaping
- Historic Sites/Archaeology





# Mitigation Elements: Examples

- **100-ft landscaped buffer to be incorporated in the lands surrounding the perimeter fencing of the US Port of Entry.**
- **Existing trees will be preserved where possible and landscaping will emphasize the incorporation of native species.**
- **Noise barriers to be installed in locations identified through the DRIC study.**
- **Port of Entry lighting will minimize impacts to adjacent residents and wildlife.**
- **Stormwater management facilities will be constructed within the project footprint to ensure adequate site drainage.**

**The community will continue to have consultation opportunities with the P3 partner during design and construction phases of the Gordie Howe International Bridge project.**



# Aesthetics Overview

- Continuation of work carried out during DRIC study
- Project goals:
  - An impressive and inspiring new gateway symbol for Canada and United States
  - Blending regional values and sound engineering
- Previously identified themes:
  - Historic
  - Friendship
  - Gateway
  - Modern
  - Native vegetation
- Commitment to ongoing consultation on aesthetics of Project components



# Community Benefits

## What are community benefits?

- Community Benefits programs are identified opportunities that can advance economic, social or environmental conditions. These opportunities are often included in public projects.



# Community Concerns

Community partnerships

Mitigation of construction and operation issues for nearby residents and businesses

Community safety and connections

Economic benefits

Aesthetics and landscaping





# Stay Connected

Web: [www.wdbridge.com](http://www.wdbridge.com)

Facebook: [www.facebook.com/wdbabridge](http://www.facebook.com/wdbabridge)

Twitter: [www.twitter.com/wdbabridge](http://www.twitter.com/wdbabridge)

LinkedIn: [www.linkedin.com](http://www.linkedin.com)

## Contact Windsor-Detroit Bridge Authority

100 Ouellette Avenue

Suite 400

Windsor, ON N9A 6T3

1-519-946-3038

[info@wdbridge.com](mailto:info@wdbridge.com)

