

Gordie Howe International Bridge Public Information Meeting

Windsor, Ontario
July 27, 2017



Introduction

1. WDBA and Partners
2. Components of the Project
3. Activities in the US
4. Activities in Canada
5. Project Procurement Process
6. Opportunities for Continued Engagement and Consultation

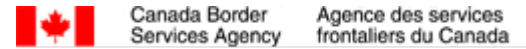


What is Windsor-Detroit Bridge Authority?

- A not-for-profit Canadian Crown corporation created in 2012
- Reports to the Canadian Government through the Minister of Infrastructure and Communities
- Manages the procurement process for the design, construction, financing, operation and maintenance of the new bridge through a public-private partnership (P3)
- Will oversee the work of the P3 partner and will manage the project agreement and payments



Our Partners



Project History and Accomplishments

Timeline	Activity
2001-04	<ul style="list-style-type: none"> Planning/Need and Feasibility Study
2005-09	<ul style="list-style-type: none"> Coordinated environmental study process completed by Canada and the US Canada determines that the Project will not have significant environmental impact, with mitigation measures US Record of Decision (ROD) obtained
2008-12	<ul style="list-style-type: none"> Canada land acquisition begins Preliminary Canadian and US Port of Entry design and other preparation work begins
2012	<ul style="list-style-type: none"> Canada-Michigan Crossing Agreement signed WDBA incorporated
2013	<ul style="list-style-type: none"> Presidential Permit
2014	<ul style="list-style-type: none"> Board of Directors and President and CEO are appointed for WDBA Members are appointed to the International Authority Board US Coast Guard Bridge Permit received
2015	<ul style="list-style-type: none"> International Authority approves United States land acquisition Selection of key advisor firms to assist with engineering, technical and legal work Selection of fairness monitor to oversee P3 procurement process Crossing officially named Gordie Howe International Bridge Start of Early Works at Canadian Port of Entry begins P3 Procurement process launches with Request for Qualifications
2016	<ul style="list-style-type: none"> RFQ short-listed respondents were announced Issuance of the RFP to Proponents Business-to-Business meetings held between Proponent teams and potential contractors in Windsor, Detroit and Walpole Island First Nation
2017	<ul style="list-style-type: none"> Announcement of multi-use path to be incorporated onto Bridge Community Group-to-Business meetings held between Proponents and community agencies in Windsor and Detroit More than 50 positions filled at WDBA Windsor office

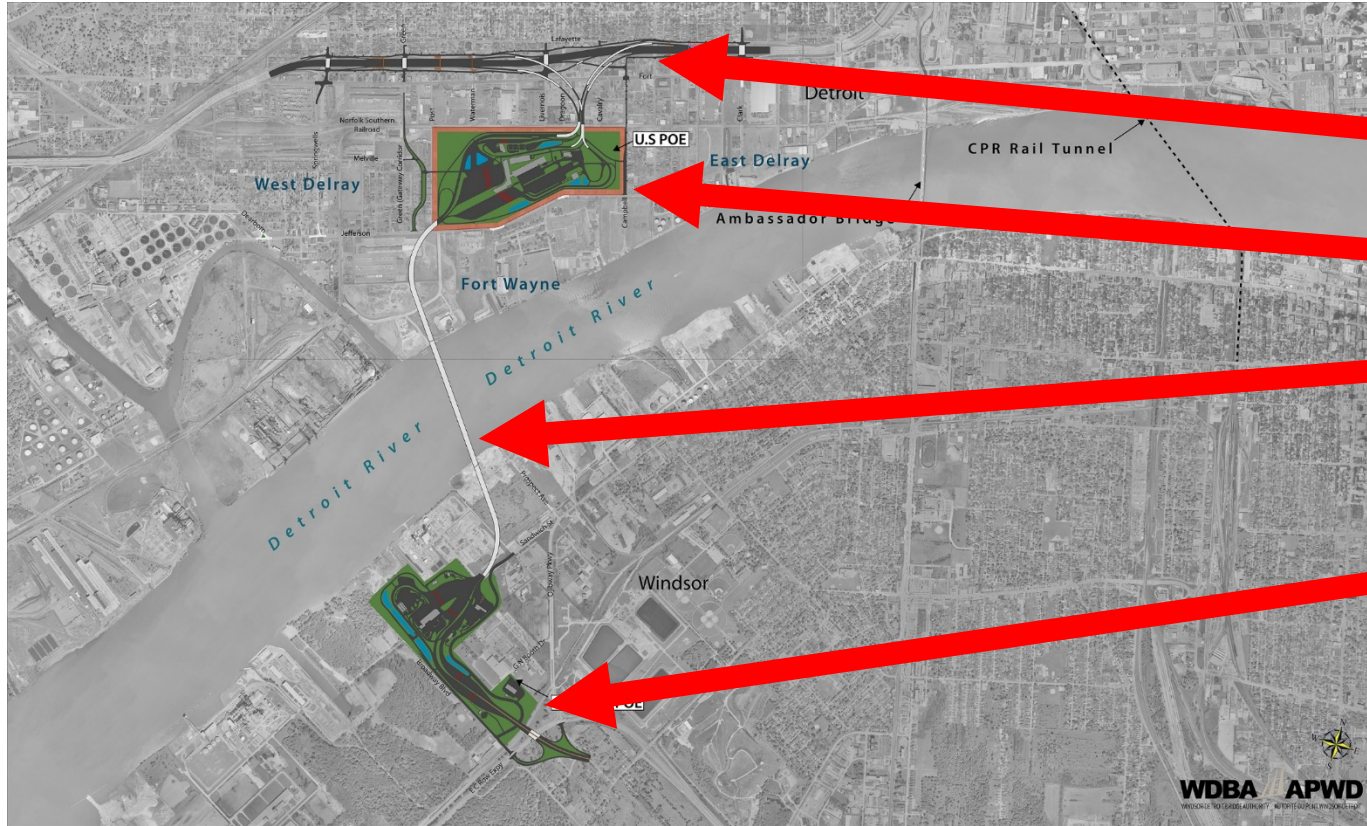
Identified need for an additional crossing option

Detroit River International Crossing (DRIC) Study: 2005-2009

- A coordinated environmental study process completed by Canada, the US, Ontario and Michigan confirmed need and the location of five components:
 - Michigan Interchange to Interstate-75 (I-75)
 - A US Port of Entry (POE)
 - A river crossing, now known as the Gordie Howe International Bridge
 - A Canadian Port of Entry
 - An Ontario access road, now known as the Rt. Hon. Herb Gray Parkway (*delivered by Ontario*)



Project Components



Legend

1. Michigan Interchange

2. US Port of Entry (POE)

3. Gordie Howe International Bridge

4. Canada Port of Entry (POE)



Consultation and Communication

Public consultation will continue in Canada and the US throughout the project phases. The DRIC study identified many items that require public consultation prior to implementation, including:

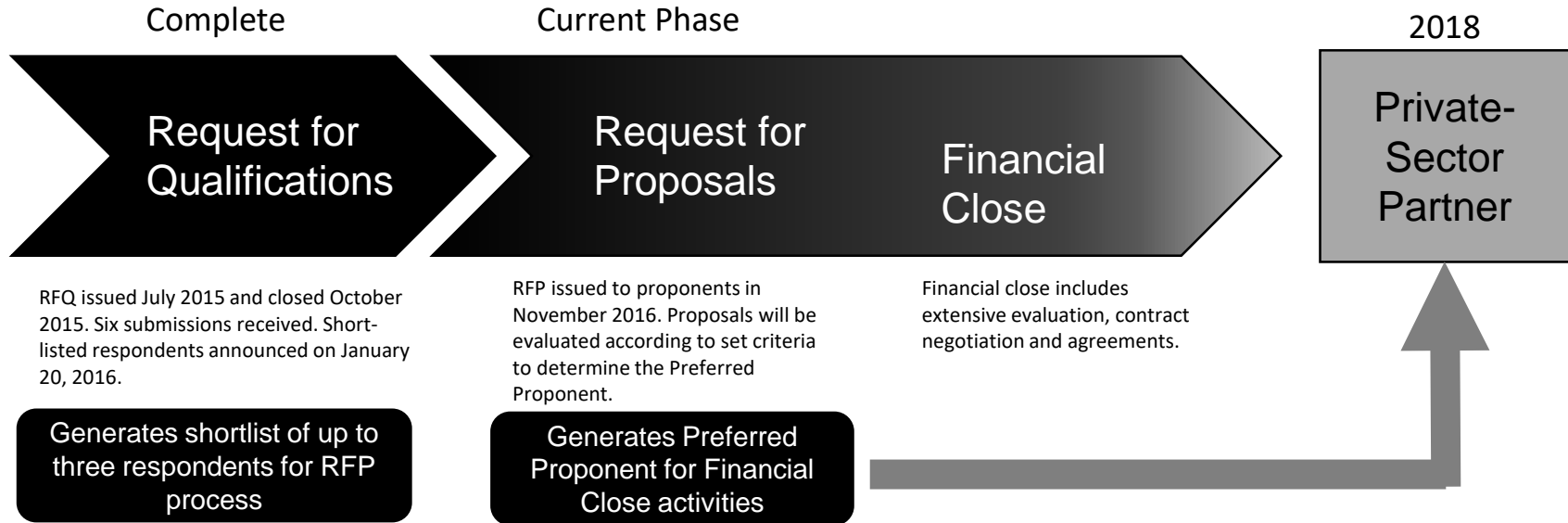
Aesthetics, Lighting, Visual Effects
Sediment Erosion
Air Quality
Species at Risk/Invasive Species/Wildlife/Migratory Birds
Archaeology
Traffic/Local Roads
Fish/Aquatics
Vegetation/Trees
Infrastructure
Vibration
Noise
Waste/Spills/Excavated Materials
Pedestrians/Bicycling Bridges at Michigan Interchange
Water Quality/Groundwater/Stormwater/Surface Water



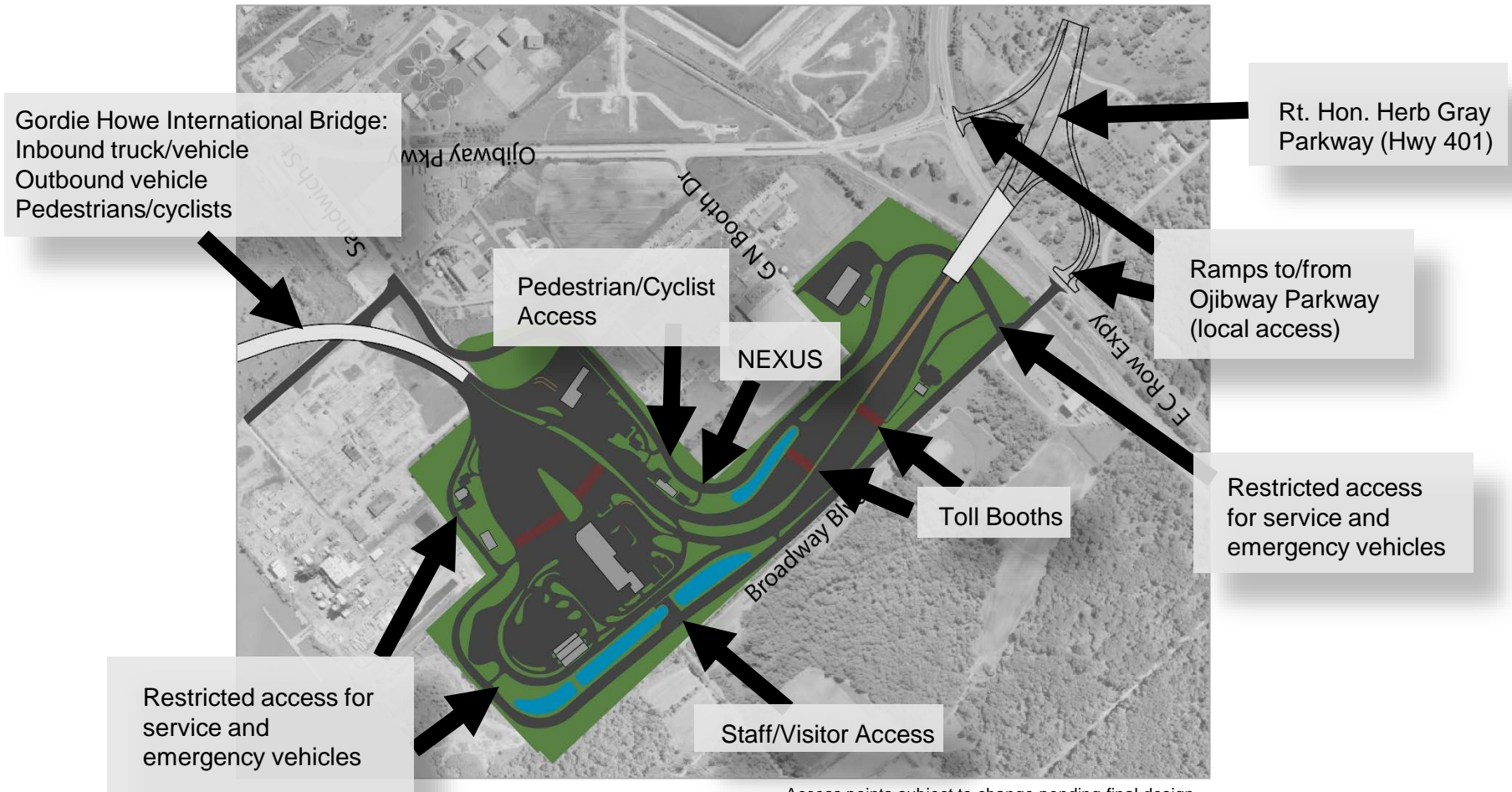
The Procurement Process: P3 Milestones

WDBA's procurement process is designed to choose a private-sector partner with the skills, experiences and resources necessary to design, build, finance, operate and maintain the Gordie Howe International Bridge project.

Three milestones in the partner selection process:



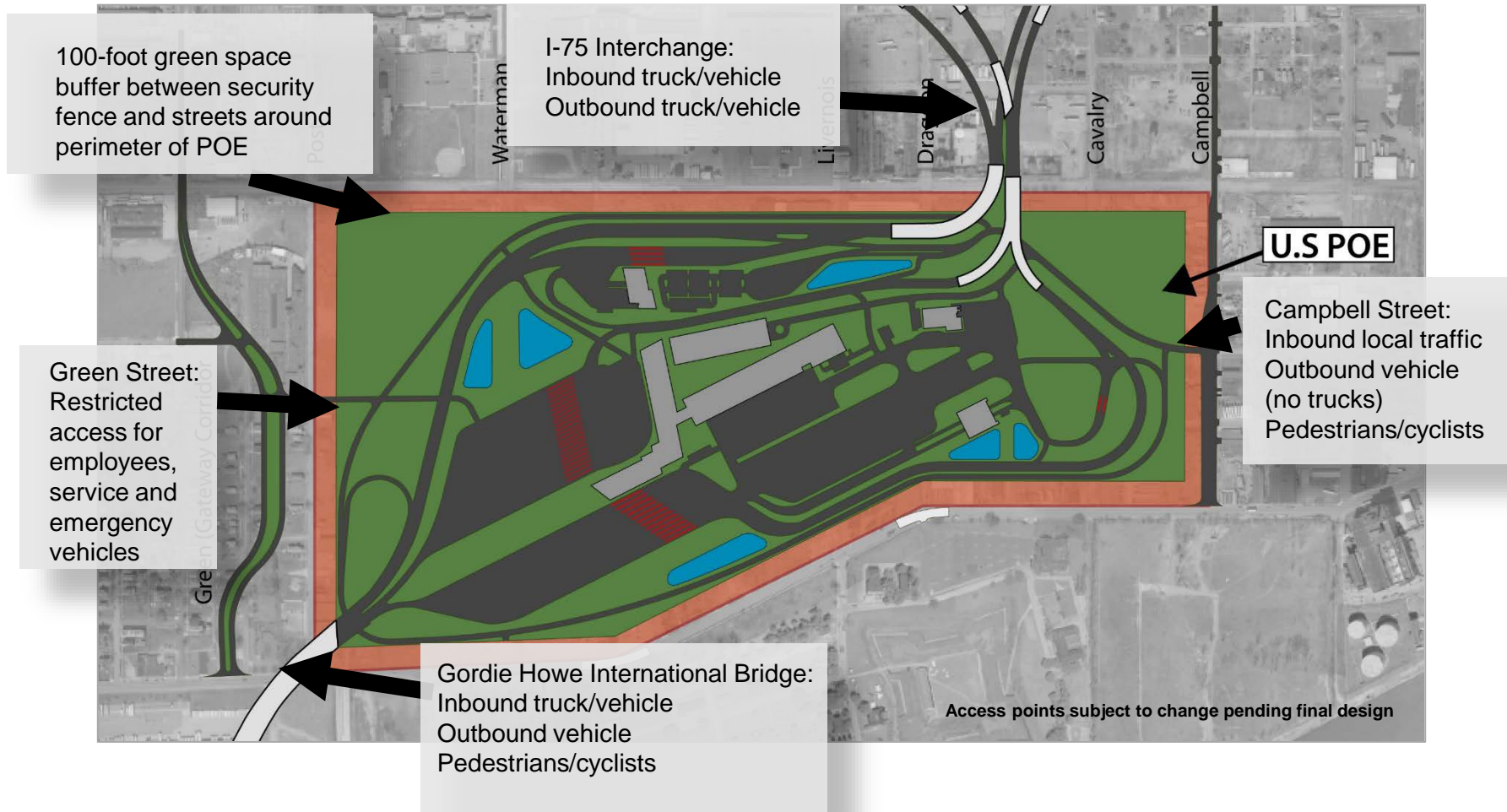
Canadian Traffic Patterns: Anticipated Access Points



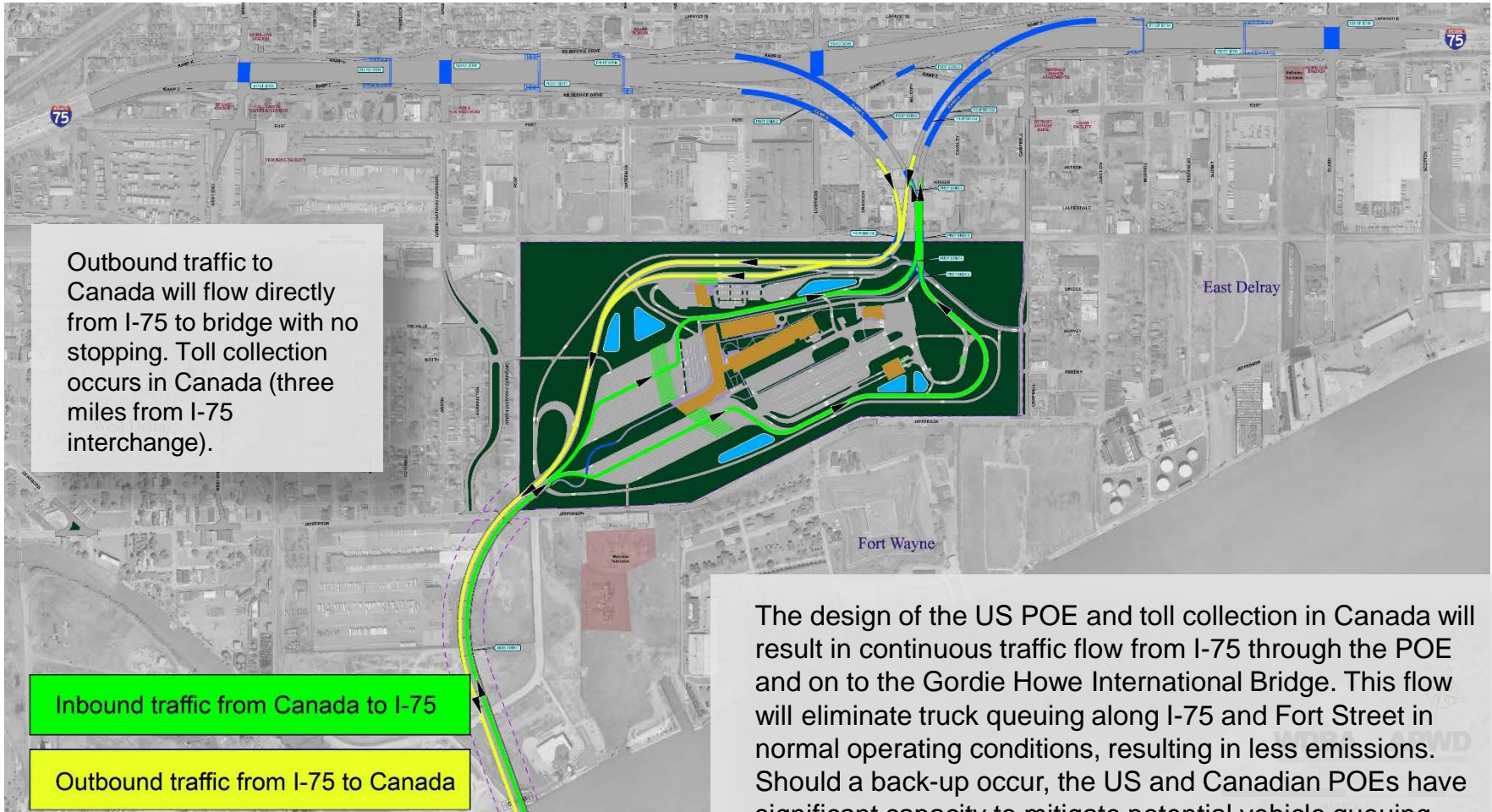
Access points subject to change pending final design



US Traffic Patterns: Anticipated Access Points



US Traffic Flow to US POE



Canada: Preparatory Activities



Phase 1 (2015-2017)

- A multi-million dollar contract awarded to a local Windsor company to complete three main tasks:
 - Advanced fill placement: more than one million tonnes of granular fill to help compress soil and raise elevations
 - Perimeter access road: a new 4-kilometre road to reroute existing municipal roads and maintain business access
 - Utility relocations: An extensive network of overhead and underground utilities require relocation outside of POE lands.



Phase 2 (2017-2018)

- Work totaling an estimated \$86 million awarded for hydro transmission, distribution line relocations and cable accessories.



Canada: Recognizing the Environment



- Thousands of Species at Risk plants and habitat features were found and removed prior to construction



- Two SAR snakes – the Eastern Foxsnake and Butler's Gartersnake – are known to live in the area of the POE.
- Crews working within the POE lands are trained to respond appropriately if a SAR snake or other species is encountered.



- Enhancements to Broadway Drain play a key role in the POE's stormwater management (SWM) system. SWM ponds collect and clean water from the perimeter access road and empty into the Broadway Drain, where the water flows into the Detroit River.
- The existing drain was re-constructed to provide fish and wildlife habitat, including snake hibernacula.



US Works: Property Acquisition

- 634 land parcels are required for the Gordie Howe International Bridge project.
- To date, MDOT has acquired and/or has control of 74 per cent of the required parcels.
- Relocation assistance and support will continue to be provided.
- The condemnation process will be carried out as needed on a parcel-by-parcel basis.

Property by the Numbers

634 total land parcels required

211 residential relocations required

36 business relocations required

74 per cent of total property acquired/in control


146 structures demolished or in demolition process as of June 29, 2017



US Works: Utility Relocation

- Utilities located within the US Port of Entry footprint and the land required for the bridge footings require relocation.
- Many utilities are completing the relocation work themselves or through their preferred contractor.
- Private utility relocation work will occur with no anticipated service interruptions.
- All utility relocation work (Permitted Activity) must comply with municipal guidelines and procedures for notifications, hours of work, noise and disposal of materials as outlined in the permitting documents.
- If you have questions or concerns regarding utility work in your neighbourhood, please contact the utility directly.

Gordie Howe International Bridge
Construction Activities: United States



Dates and times provided below may change due to weather conditions and other factors affecting construction activities. Although this list is intended to be comprehensive, unavoidable emergency road detours and road closures may occur. Please watch for workers along this corridor. We apologize for any inconvenience and thank you for your patience.

Week of August 1, 2016

Demolition Activity
Demolition work will occur on West Fort Street (between Dragon Street and Military Street), Bealow Court (near Livernois Avenue), Livernois Avenue (between Lafayette Boulevard and the Southbound I-75 Service Drive) and Crawford Street (between South Street and Jefferson Avenue). The roads will remain open and the work is not expected to impact traffic.

Preliminary Site Investigation (PSI)
PSI work will occur on the Southbound I-75 Service Drive (between Livernois Avenue and Crawford Street). The road will remain open and the work is not expected to impact traffic.

Survey Activity
Survey Crews will be working on Springville Court (south of Jefferson Avenue), Gilman Street (between Lafayette Boulevard and I-75), Siskiyaw Street (between Lafayette Boulevard and I-75), Crawford Street (between Lafayette Boulevard and I-75), and Campbell Street (between Anther Street and I-75). The roads will remain open and the work is not expected to impact traffic.

Utility Work
There is no utility work currently planned.

Temporary Road Closures
There are no road closures currently planned.

Follow the project
www.wdtdp.com www.instagram.com/wdtdp www.facebook.com/W2548tdp www.youtube.com/watch?v=W254

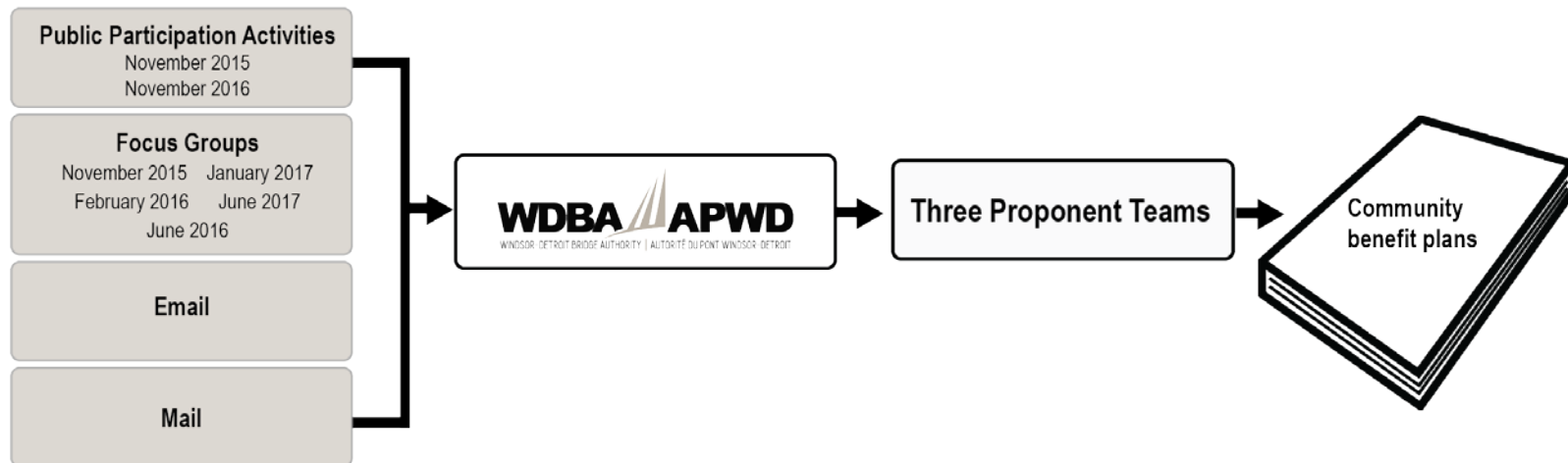
WDBA APWD
WINDSOR-DETROIT BRIDGE AUTHORITY | AUTORITÉ DU PONT WINDSOR-DETROIT

WDBA posts weekly Construction Notices online and at various community locations in Windsor and Detroit regarding upcoming work



Community Benefits: Public Input

- More than 200 suggestions for community benefits from Michigan and Ontario residents, business owners, Indigenous Peoples, community leaders



- Proponents will submit community benefits plans to WDBA as part of the RFP submission.
- The private-sector partner will deliver the plan with oversight from WDBA



Mitigating Construction Impacts for Host Communities

Noise Mitigation

- Ensure all construction equipment is in good repair, fitted with functioning mufflers and complies with noise emission standards
- Limit noisy activities to daytime hours and in accordance with municipal noise bylaws
- Where possible, install noise barriers or berms in the early construction phases
- Maximize the distance between the construction staging areas and nearby receptors
- Provide regular updates to nearby residents and businesses on possible activities that will affect them

Dust Management

- Periodic watering or stabilization of disturbed and exposed soils
- Limit speed of vehicular traffic
- Use water sprays during loading/unloading of materials
- Sweep or water flush entrances to construction zones

Erosion and Sediment Control

- Develop and implement erosion and sediment control plans to protect surface waters, adjacent ecosystems and properties
- Follow provincial and state environmental guidelines for road construction
- Create temporary stormwater management ponds to manage water quality

Water Quality Protection and Management

- Protect and manage groundwater regimes for fish habitat and wetlands through design
- Develop salt management plans for construction and operation phases
- Create and maintain permanent stormwater management plans to control water quality

Archaeology/Cultural Resource Protection

- Continue to undertake archaeological and heritage investigations
- Report unexpected archaeological finds to the appropriate agencies during the construction phase

Traffic Disruptions

- Alert nearby residents and businesses of temporary traffic disruptions in advance when possible
- Ensure alternate routes are available
- Provide signage to alert drivers and pedestrians of closures or detours



Questions?



Stay Connected

WDBA is engaging the community and its stakeholders as it works to build the Gordie Howe International Bridge project. There are many ways to stay connected with us.



Follow us
@wdbabridge



Like us at
@wdbabridge



Follow us at
@windsordetroitbridgeauthority



Connect with us at
WDBA-APWD



Subscribe to our channel
WDBA-APWD



WDBA Website

Our website, wdbridge.com, is your main source for up-to-date information on construction activities, news, P3 procurement process, employment opportunities and corporate reports.



Public Inquiries

Have a question about the project? Not only can you message us through social media, you can call us at 519-946-3038 or email us at info@wdbridge.com.



Our Office

WDBA's office provides a place where you can find information, talk to the team, ask questions and provide feedback. Our offices are located at: 100 Ouellette Avenue, Suite 400 Windsor, ON N9A 6T3



Join the Email list

Join our electronic mailing list by visiting our website and receive up-to-date information delivered right to your inbox.

