



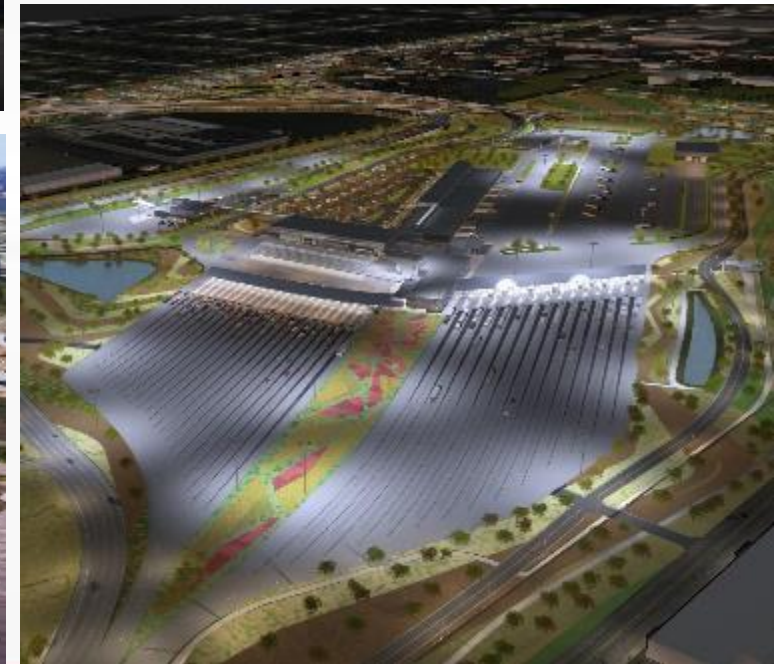
PONT INTERNATIONAL
GORDIE
HOWE
INTERNATIONAL BRIDGE

ONLINE COMMUNITY MEETING

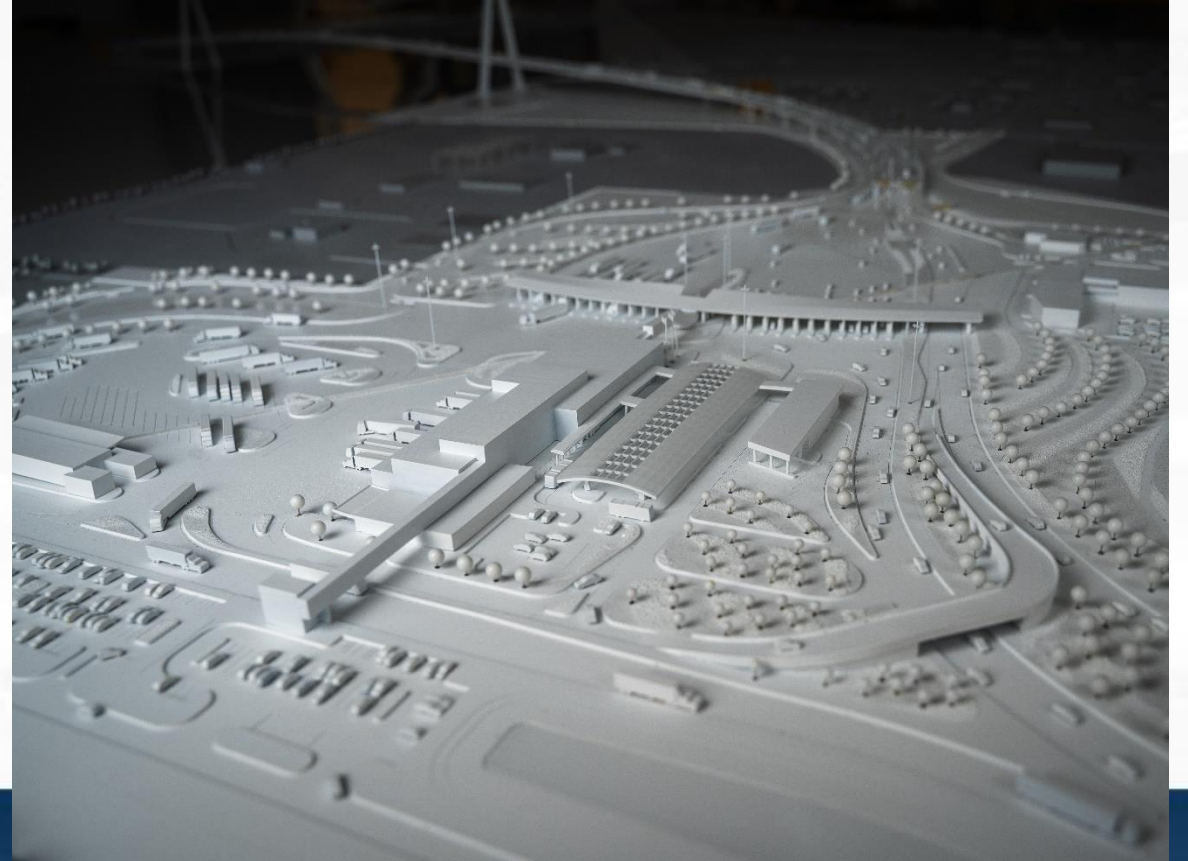
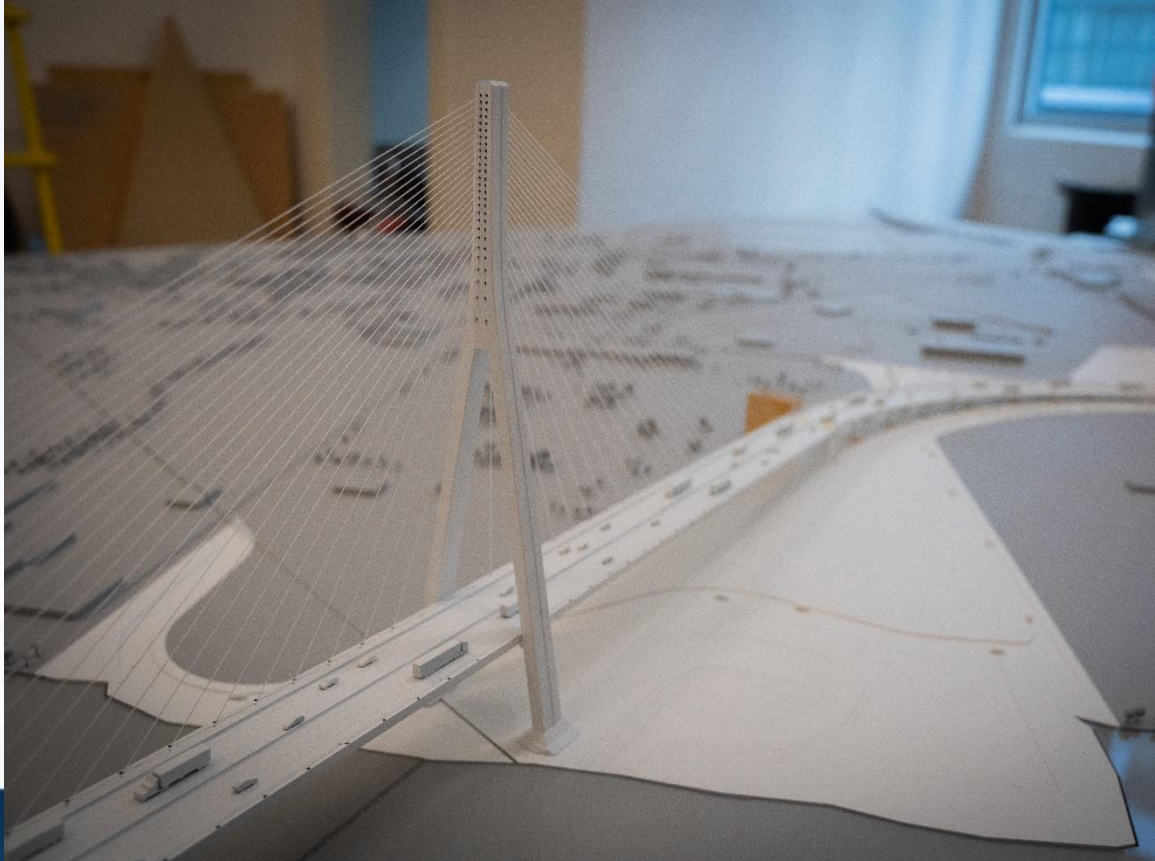
December 2, 2020



PROJECT COMPONENTS



SCALE MODEL



PROJECT SUSTAINABILITY

- The Canadian and US Port of Entry facilities are designed to meet LEED v4 Silver rating and the bridge and Michigan Interchange were designed to meet Envision Silver, both of which will ensure longevity while minimizing environmental impact.
- In November 2020, the project team submitted the Envision application to ISI for review:
 - Work on this application began in March 2017
 - Over 150 people have been actively engaged in preparing the application
 - The submission was almost 2500 pages, covering 45 different credits.
- The LEED application is anticipated to be submitted in early 2021.

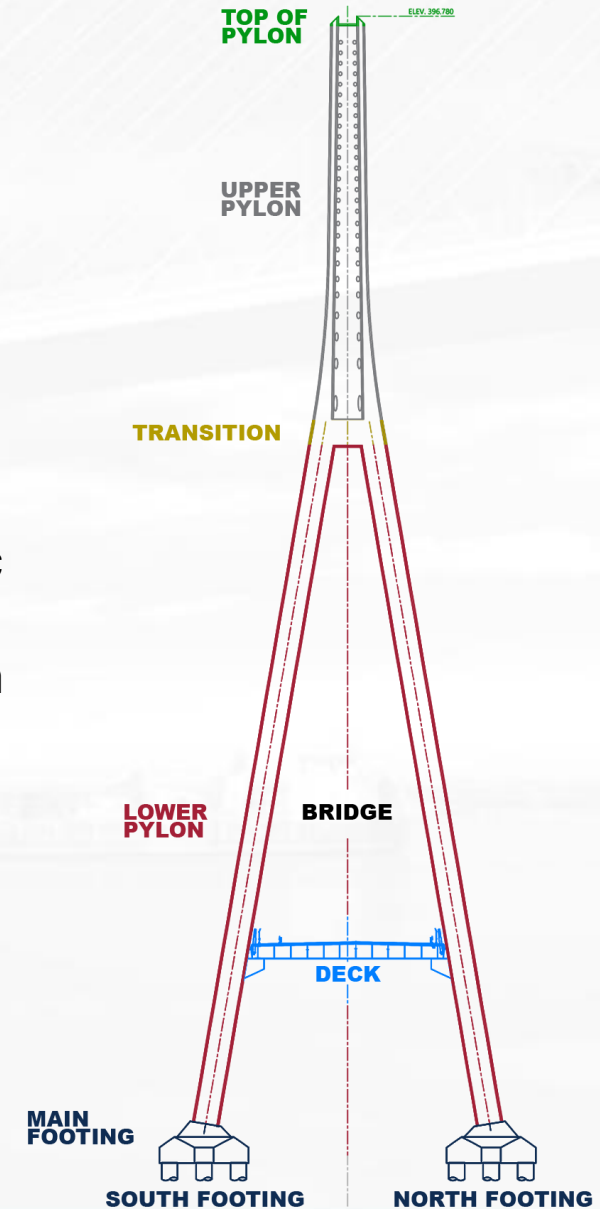
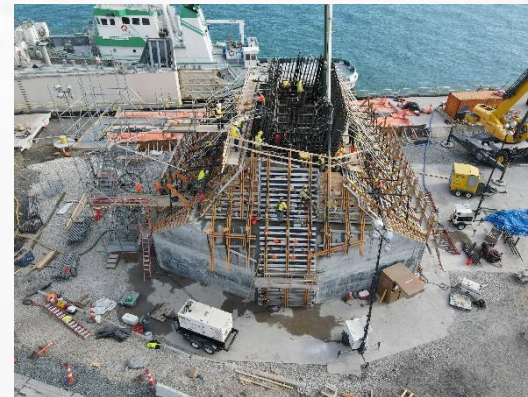


BRIDGE TOWER CONSTRUCTION

- The main bridge towers will be approximately 220 metres/720 feet high when complete and include the main footings, lower pylon, upper pylon and bridge deck.

Foundation and Main Footings

- The foundation for each tower is composed of 12 36-metre/118 foot drilled production shafts drilled down to bedrock.
- The tower footing is then constructed from this foundation, requiring 1,910 cubic metres/67,450 cubic feet of concrete, 440 tonnes/970,000 pounds of rebar and 1,600 meters/5,250 feet of post tensioning cables that connect the footings from end-to-end.



BRIDGE TOWER CONSTRUCTION

Bridge Towers

- The lower pylon is 140 metres/460 feet in height, approximately 2/3 of the total height of the tower and is composed of 29 different segments. Work on the Canadian lower pylon is underway. This work will begin on the US site shortly.
- The upper pylon is approximately 80 metres/260 feet and make up the last 1/3 of the tower height. This section will house the cables that support the bridge deck.
- To construct the towers they are broken down into smaller segments that will be constructed using a tower crane climbing system that will “jump” vertically up the tower every few months.



BACK SPAN CONSTRUCTION

- Construction of the footings for the bridge side span and anchor piers are also underway on both the Canadian and US bridge sites.
- There are six foundations and anchor piers on each side of the border that will support the main bridge structure over the river.



CONSTRUCTION UPDATE: CANADIAN BRIDGE SITE

BEFORE: 2016



CURRENT: 2020



CONSTRUCTION UPDATE: US BRIDGE SITE



BEFORE: 2018



CURRENT: 2020

CONSTRUCTION UPDATE: CANADIAN POE

BEFORE: 2016



CURRENT: 2020



CDN POE Site

CONSTRUCTION UPDATE: US POE



BEFORE



CURRENT: 2020

CONSTRUCTION UPDATE: MI INTERCHANGE



US LONG-TERM TRAFFIC CLOSURES: WEST END STREET AND FORT STREET

- West End Street will be closed between Fort Street and Melville Street, from December 8 until February 8, 2021. Local traffic and business traffic will have access to West End Street between Norfolk Southern Railroad to Melville Street.
- Traffic on Fort Street, east of Glinnan Street and west of Springwells Street, will be reduced to one lane each for westbound and eastbound traffic from December 8 until February 8, 2021.

US Bridge Site

US LONG-TERM TRAFFIC CLOSURES: SPRINGWELLS COURT

Springwells Court northbound and southbound will be closed west of the Lafarge entrance to east of the Springwells Court detour in early 2021. This closure is anticipated to be in place for four years. Access will be maintained to all adjacent businesses through a new detour route.



UPCOMING LONG-TERM TRAFFIC CLOSURES: NORTHBOUND I-75 SERVICE DRIVE

- Bridging North America will temporarily close the northbound I-75 Service Drive for siphon work at Calvary Street and Military Street. The Northbound I-75 Service Drive will close between Dragoon Street and Campbell Street in for approximately one-year beginning in early 2021.
- Access will be maintained to the on-ramp at Dragoon Street to northbound I-75.
- Further communications and notifications will be issued as the work approaches.

Detour

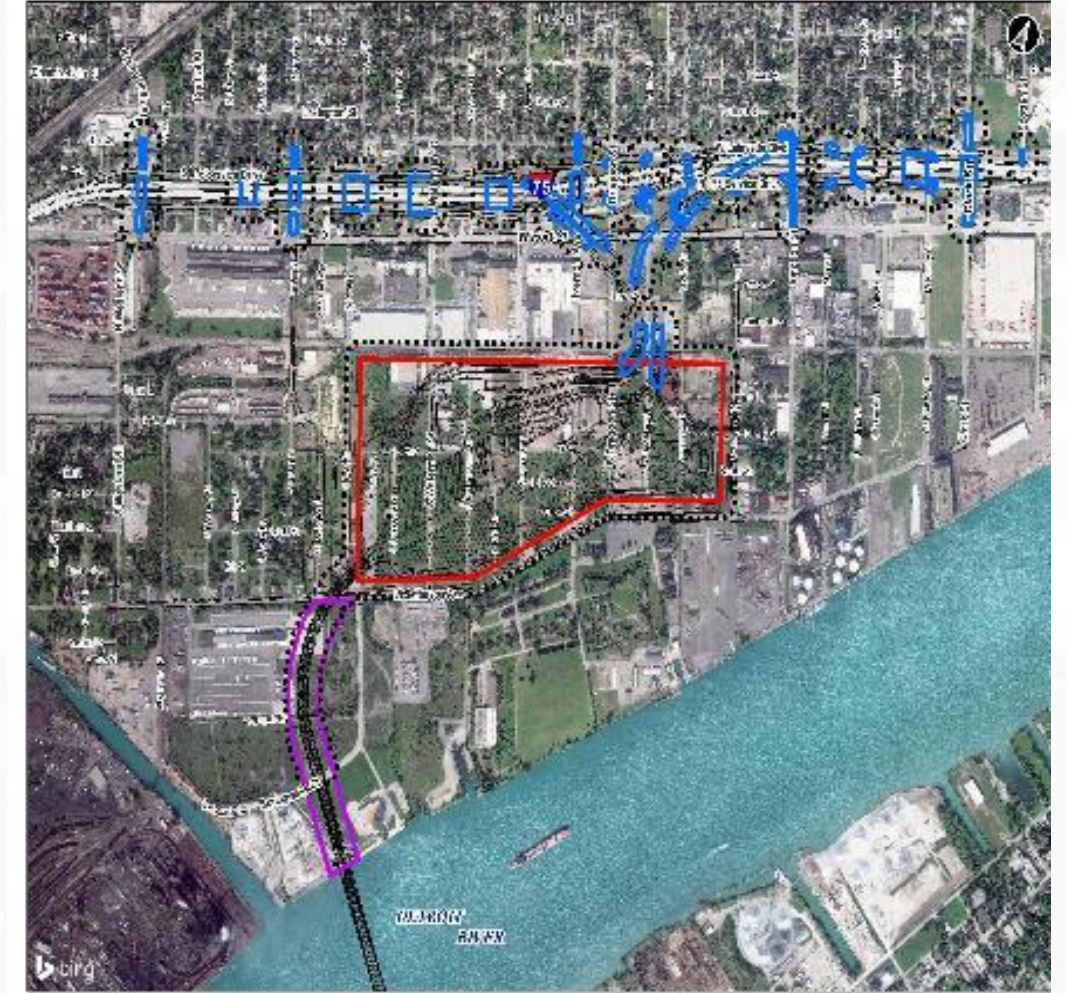
- Traffic heading east on the northbound I-75 Service Drive will head south on Livernois, east on Fort Street, north on Junction Street to the northbound I-75 Service Drive. Access will be maintained to the on-ramp at Dragoon Street to northbound I-75.



CONSTRUCTION MITIGATION

Vibration Monitoring

- In some instances, construction activities may cause noise and vibration beyond the project limits.
- In accordance with the Final Environmental Impact Statement (FEIS) and the Record of Decision (ROD), pre-construction, construction and post-construction foundation surveys will be made available to owners of properties located within 150 feet of identified vibration zones.
- Monitoring is being undertaken in a staged approach.
 - Zone One began in late 2019
 - Zone Two is anticipated to begin in early 2021.
- Owners of residential and business properties that fall within the identified areas will receive a letter to opt-in to the program.



SANDWICH STREET RECONSTRUCTION PROJECT

- BNA detailed design work is underway and is anticipated to be complete in mid-2021.
- Construction timelines:
 - City of Windsor sewer relining work began in November 2020 and carry into summer 2021
 - Enwin water line replacement and BNA road construction work will follow.
- Additional below-ground survey work will be performed later this year or early next.
- Archaeological assessment work is underway.
- Communications will be issued to advise of traffic impacts as needed.



CONSTRUCTION MITIGATION

Measures are being taken to minimize the impact of construction in accordance with the commitments in the approved Environmental Assessment Report and Federal Screening Report in Canada and the Environmental Impact Statement in the US. These include:

Dust control

- periodic watering or stabilization of disturbed and exposed soils
- limit speed of vehicular traffic
- use water sprays during loading/unloading of materials
- sweep or water flush entrances to construction zones
- installation of monitoring stations at the perimeter of construction areas.

Noise

- ensure all construction equipment is in good repair, fitted with functioning mufflers and complies with noise emission standards
- maximize the distance between the construction staging areas and nearby receptors
- provide regular updates to nearby residents and businesses on possible activities that will affect them
- conduct ongoing noise monitoring in the vicinity of construction.

COMMUNITY BENEFITS PLAN



The Workforce Development and Participation Strategy is geared toward engaging businesses and focuses on supporting workforce, training and pre-apprenticeship/apprenticeship opportunities

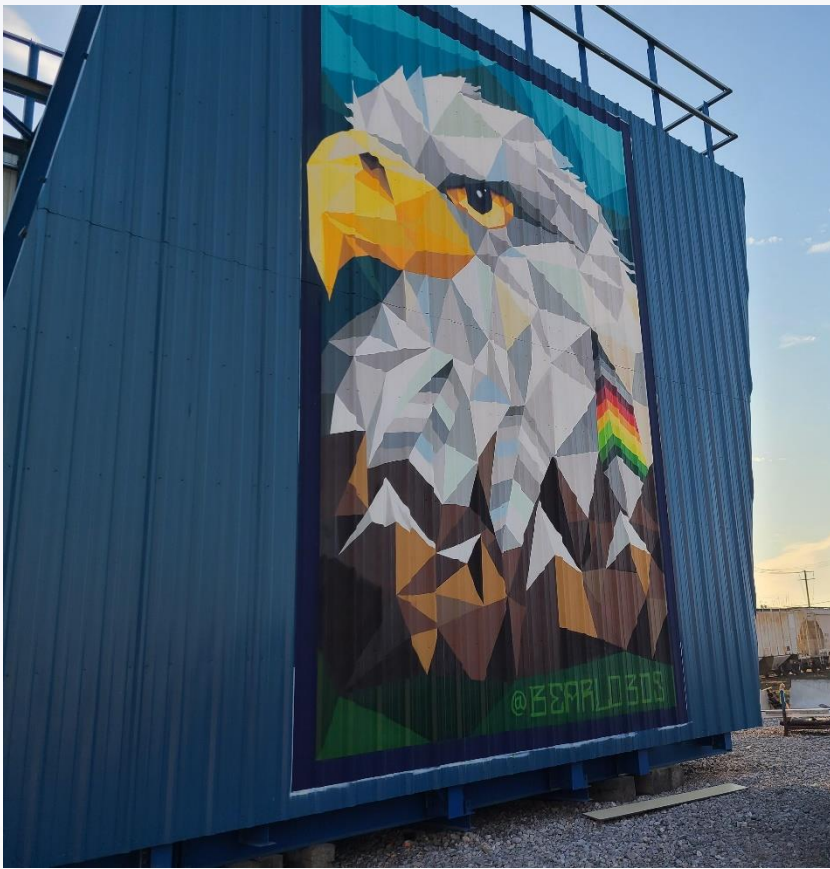


The Neighbourhood Infrastructure Strategy focuses on collaborating with stakeholders and community members through consultation to develop a community investment strategy based on identified priorities.

US Bridge Site



BRIDGE TOWER ARTWORK: CANADA



BRIDGE TOWER ARTWORK: US

COMMUNITY ART UPDATE

In September 2020, four functional art pieces were installed in Sandwich through Life After Fifty's West End Art Project:



COMMUNITY ART UPDATE

In October 2020, Friends of the Detroit River in partnership with MotorCities National Heritage Area, members of the Fort Rouge Gateway (FRoG) partnership held the ribbon cutting for the Fort Street Bridge Park in Southwest Detroit. At that time, a centerpiece of the park, a sculpture titled “March On” by the Nordin Brothers was publicly revealed.



Photo by Keith Childress-Great Lakes Aggregates

COMMUNITY ART, CULTURE AND HISTORY

- In early 2021, the project team will begin consultation and community engagement for the **Windsor-Detroit Cross-River Tour**.
- This initiative celebrates the unique culture, history and diversity of the Sandwich and Delray communities through interpretive signage and plaques installed at key locations along pedestrian and cyclist routes in the host communities.
- The project team will partner with local historians and community members to inform the development of these signs to ensure that they reflect the character of the region and celebrate important moments in each community's history.
- A subcommittee will be struck to provide ongoing community feedback.

2021 COMMUNITY ORGANIZATION INVESTMENT

Applications for funding through the 2021 Community Organization Investment initiative opened **November 17, 2020** and will close at **12PM on January 27, 2021**.

An annual **\$50,000 (CDN)** investment allowance per country will be made available for eligible organizations between 2020 and 2024. Requests for funding can range from **\$1,000 - \$25,000 (CDN)**.

Learn more about the 2021 Community Organization Investment initiative by:

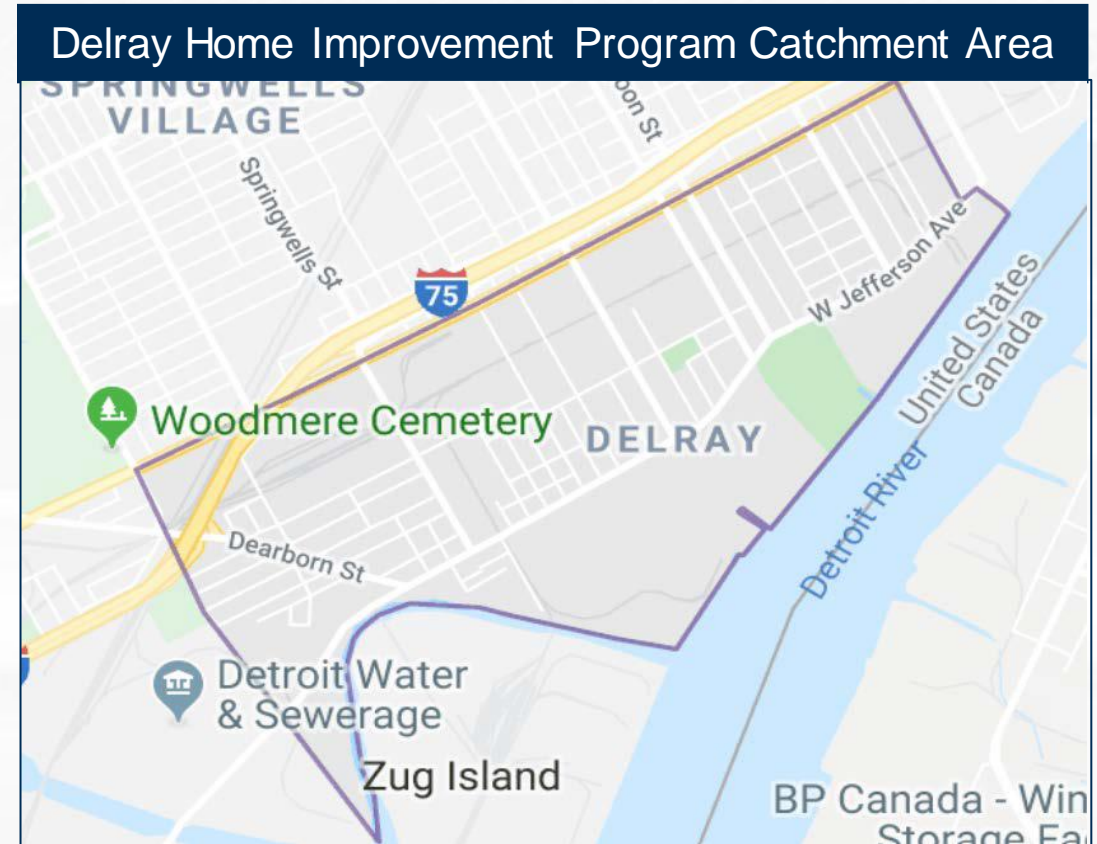
- Attending a virtual Community Organization Investment Information Session on December 9, 2020 1PM – 2PM or in January 2021

Applications and eligibility information are available at GordieHoweInternationalBridge.com



DELRAY HOME IMPROVEMENT PROGRAM

- The Community Benefits Home Repair Program is anticipated to launch in the coming weeks, and continue through to 2024, funding permitted.
- Initial target area includes properties located south of I-75 in Delray.
- Repairs that will be offered to eligible homes include:
 - Window replacement
 - HVAC system replacement
 - Insulation
 - Roof Repair
- Repairs will be undertaken in a staged approach.



Visit [GordieHoweInternationalBridge.com](https://www.GordieHoweInternationalBridge.com) to stay informed about the Delray Home Improvement Program.

SANDWICH BUSINESS DEVELOPMENT PROGRAM

In October 2020, the project team launched the Sandwich Business Development Program with the 2020 Sandwich Business Development Summit.

Free business support programming is now available:

The WindsorEssex Small Business Centre is expanding services to Sandwich:

- Offer business and entrepreneurship services
 - Perform consultations and assessments
 - Provide Digital Service Squad support, and
 - Host targeted hands-on workshops
-
- The Accelerator in partnership with Baker Tilly Live provides:
 - Business Development and Discovery Workshops for Local Businesses
 - Women-Led Business Development and Discovery Workshops



ONGOING CITY OF WINDSOR CONSULTATION



Ojibway Parkway Wildlife Eco-Passage

- Project commitment to invest seed funding for the City of Windsor's wildlife eco-passage project to provide safe passage for wildlife between Black Oak Heritage Park and Ojibway Park.
- Initial funds released to City of Windsor to initiate the Environmental Assessment.
- The City's EA and public consultation is underway and available for comment on the City website until December 3, 2020.

McKee Park Improvements

- Project commitment to provide partial funding for park improvements in Sandwich.
- The City of Windsor is currently undertaking consultation on the park improvements to be completed.
- Provide input on the City of Windsor website until December 18, 2020.

To comment, please visit www.citywindsor.ca



2020 Meet the Contractor Events

In October 2020, BNA hosted two virtual Meet the Contractor events in partnership with Tier 1 subcontractors in each country:

Canadian Tier 1 Subcontractors

- Sterling Ridge
- Vollmer

US Tier 1 Subcontractors

- Blaze
- Iafrate
- Wallbridge

Each event included:

- Information about how to access and bid on upcoming procurement opportunities
- Current work packages
- Information for Disadvantaged Business Enterprises (DBEs) – *US only*
- Presentations by the Tier 1 subcontractors regarding their scope of work and how to bid on lower-tier contracting opportunities
- Breakout rooms to facilitate networking

BRIDGING NORTH AMERICA HIRING & PROCUREMENT



jobs@bnacagp.com



procurement@bnausjv.com

QUESTION AND COMPLAINT PROCESS


The project team is committed to ensuring that communication with the public is maintained during construction so concerns are addressed as quickly as possible. Adjacent residents and businesses will receive notifications of upcoming work, regular progress updates and project contact information

Questions and complaints can be addressed to WDBA through the following:

- Public inquiry line: 1-844-322-1773
- Info@wdbbridge.com

LEARN MORE

 gordiehoweinternationalbridge.com

 1-844-322-1773

 @gordiehowebrg

 @gordiehowebridge

 Gordie Howe Bridge

 @gordiehowebrg

 WDBA-APWD

