



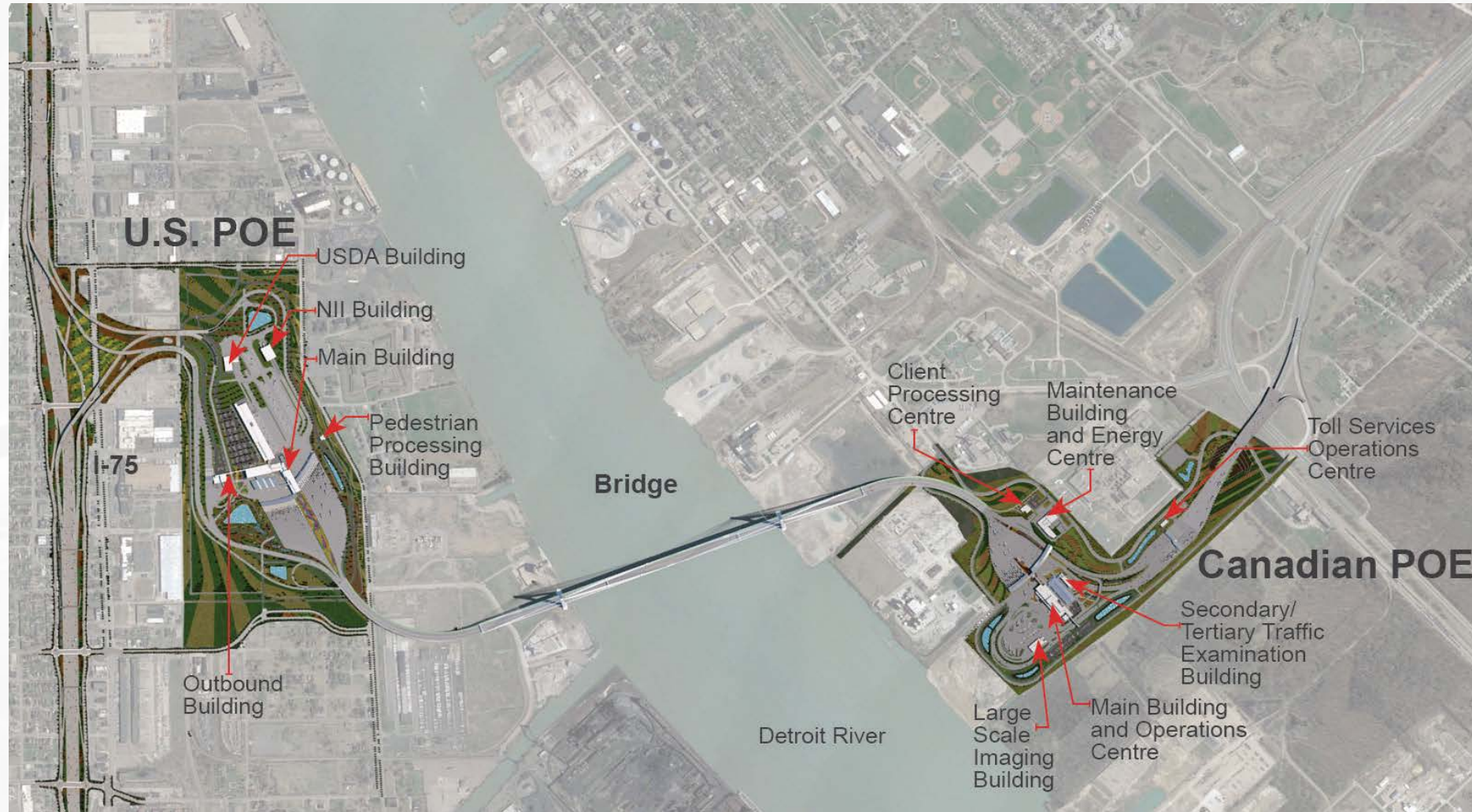
PONT INTERNATIONAL  
**GORDIE**  
**HOWE**  
INTERNATIONAL BRIDGE

# ONLINE COMMUNITY MEETING: US

September 30, 2020



# PROJECT COMPONENTS

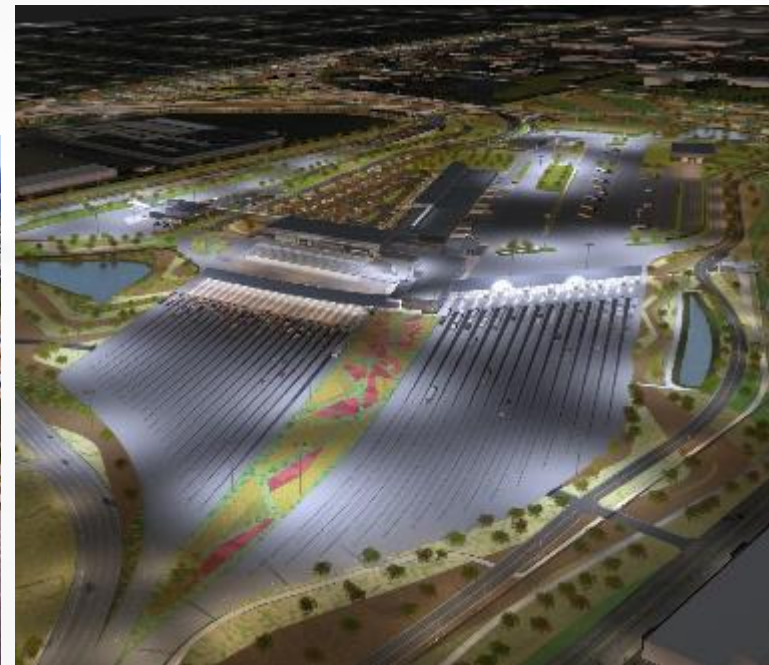


# CONSTRUCTION SCHEDULE

	2018	2019	2020	2021	2022	2023	2024
Project Start-up	█						
Design	██████████						
Construction				██████████	██████████	██████████	█
Turnover and Commissioning						██████████	

- Estimated construction duration 74 months
- 70% of construction hours will occur between 2021 – 2023
- It is anticipated that the Gordie Howe International Bridge open to traffic by the end of 2024

# PROJECT COMPONENTS



# DETROIT STREET IMPROVEMENTS

- Roadway resurfacing and improvements to Jefferson Avenue, Campbell Street, Green Street and Fort Street. This work is anticipated to occur in 2023.
- Five new pedestrian bridges will be constructed over I-75.
- Decorative fencing: to be installed around perimeter of US POE with irrigated landscaping
- Fort Street bike path: protected 6-foot bike path along both sides of Fort St. from Green to Junction Streets
- Deciduous shade trees planted every 25 feet along Jefferson, Fort between Green and Junction Streets and other area streets.
- Continuous, accessible sidewalks: fully accessible sidewalks installed along Service Drive to connect each pedestrian bridge



# PROJECT SUSTAINABILITY

The goals and objectives of our sustainability framework include:

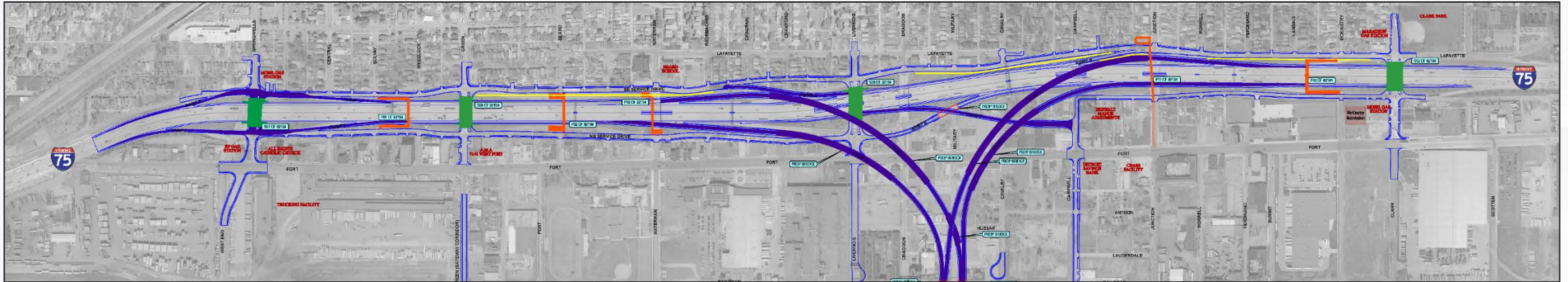
- Maintain safety and security
- Create a culture of leadership
- Design for durability and resiliency
- Provide economic opportunity
- Conserve non-renewable resources
- Protect the natural world

## Examples include:

- Diverse workforce goals
- Bridge lighting and energy efficiency
- Material resource conservation
- Native plant landscaping
- Integration of a Peregrine falcon box



# US PROJECT CONFIGURATION



The future configuration of this area includes the following:

## Road Bridges

Road bridges carrying vehicular traffic over I-75 will be reconstructed at:

- Springwells Street
- Green Street
- Livernois Avenue (two-way traffic)
- Clark Street

## Access Ramps

North and southbound I-75 ramps will be accessible as follows:

### Northbound Exit Ramps:

- Springwells Street
- I-75 exit to US POE

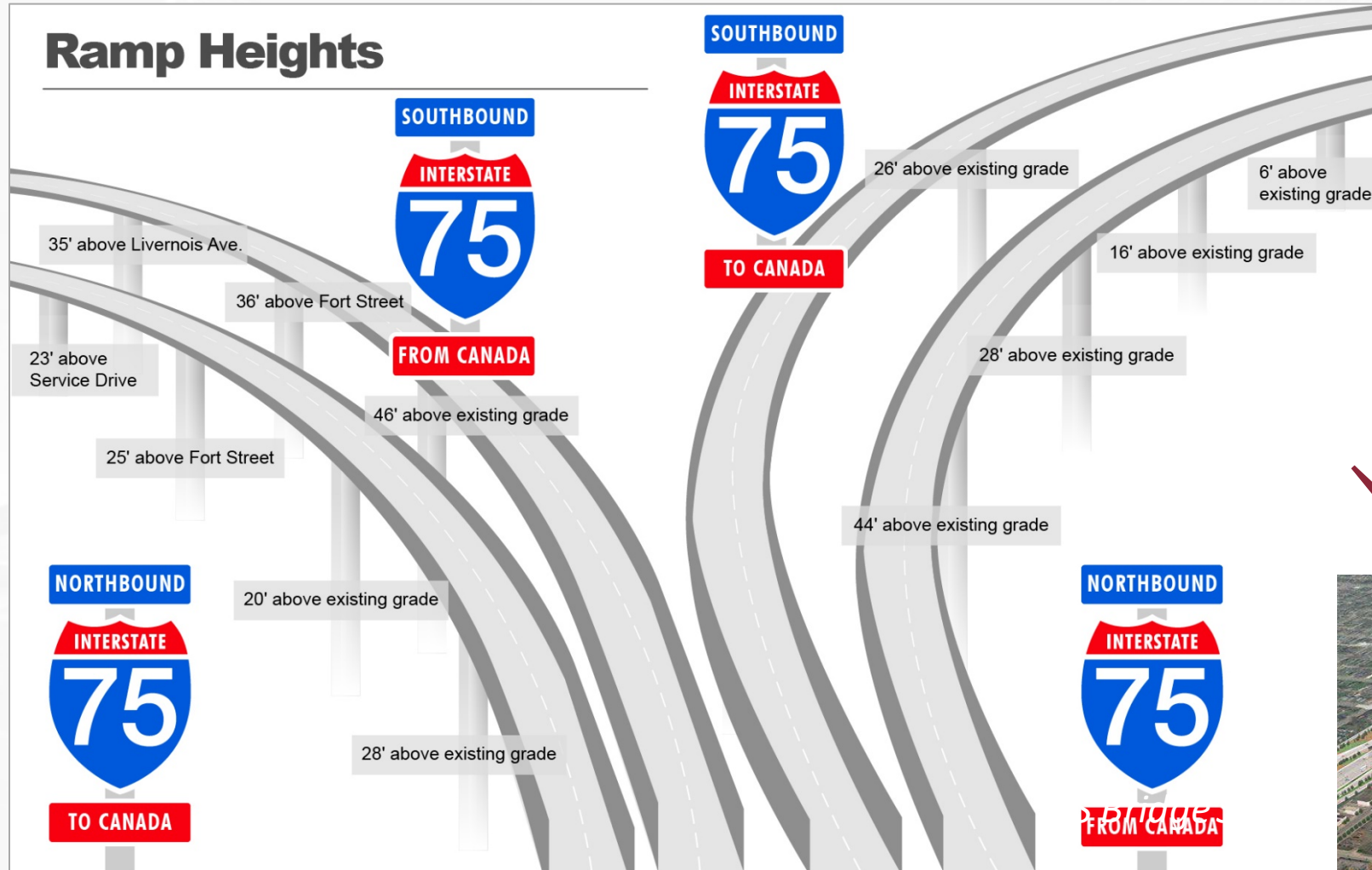
### Southbound Exit Ramps:

- Clark Street
- I-75 exit to US POE (new)
- US POE exit to I-75 (new)
- Waterman Street (new)
- Springwells Street

### Southbound Entrance Ramps:

- Springwells Street
- Junction Street

# I-75 PROJECT CONFIGURATION: RAMPS



Ramp heights to and from the US POE will begin below grade for vehicles exiting I-75 and quickly elevate to a maximum of 44-46 feet above street-level prior to descending to ground level at the Port of Entry.





# I-75 RAMP AESTHETICS



*Conceptual rendering only:  
I-75 ramp configuration looking west*

# I-75 RAMP AESTHETICS



*Conceptual rendering only:  
View looking east from Northbound I-75 Service Drive towards  
US POE ramp*



# I-75 RAMP AESTHETICS



*Conceptual rendering only:  
View looking west from northbound I-75 on-ramp at Livernois Ave*

# PEDESTRIAN BRIDGE LOCATIONS



*Pedestrian bridge locations map*

# PEDESTRIAN BRIDGE DESIGN



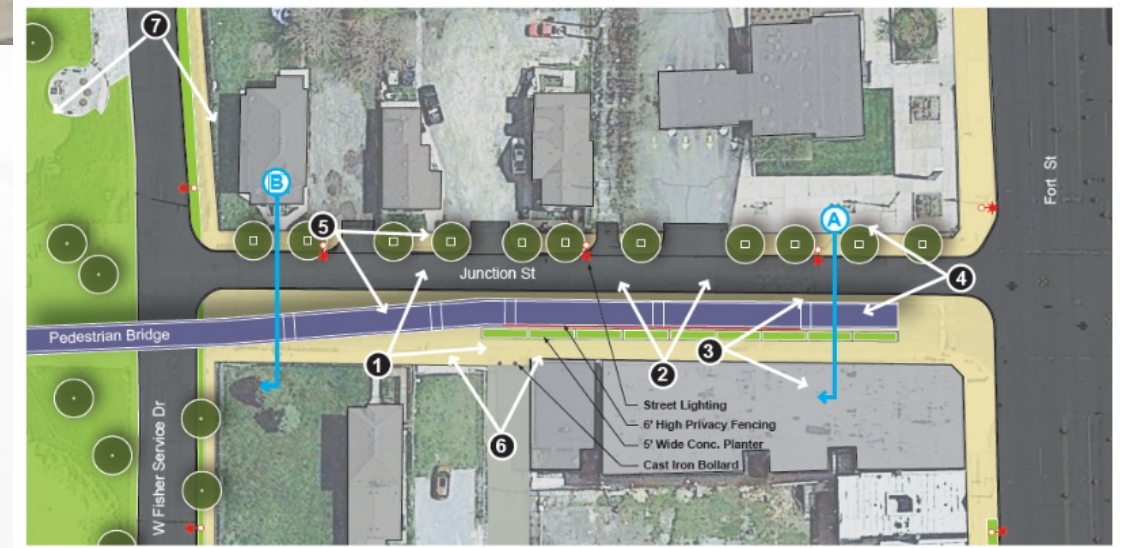
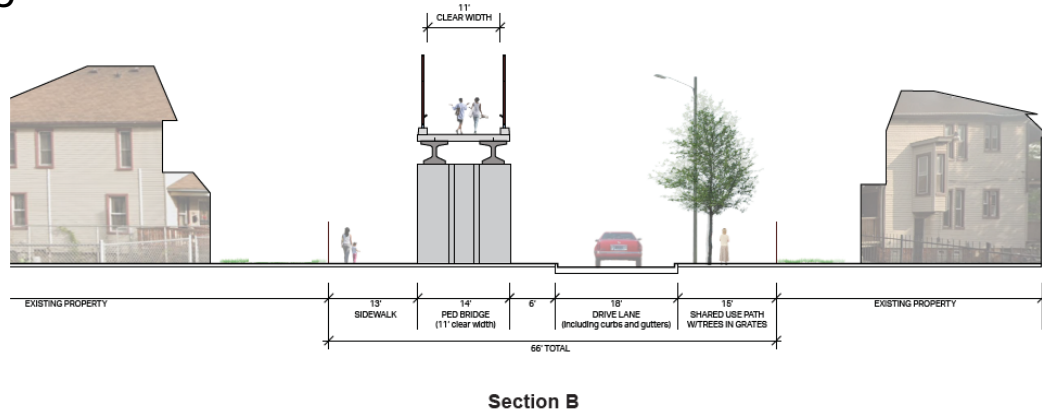
# JUNCTION STREET PEDESTRIAN BRIDGE (SOUTH)



Facing west on Northbound Service Drive



Facing south-west on Junction Street



# JUNCTION STREET PEDESTRIAN BRIDGE (SOUTH)



*Night view: Facing north on Junction Street*

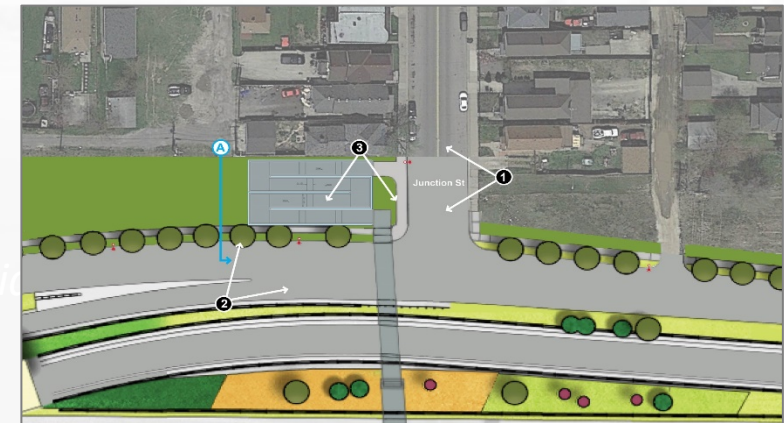
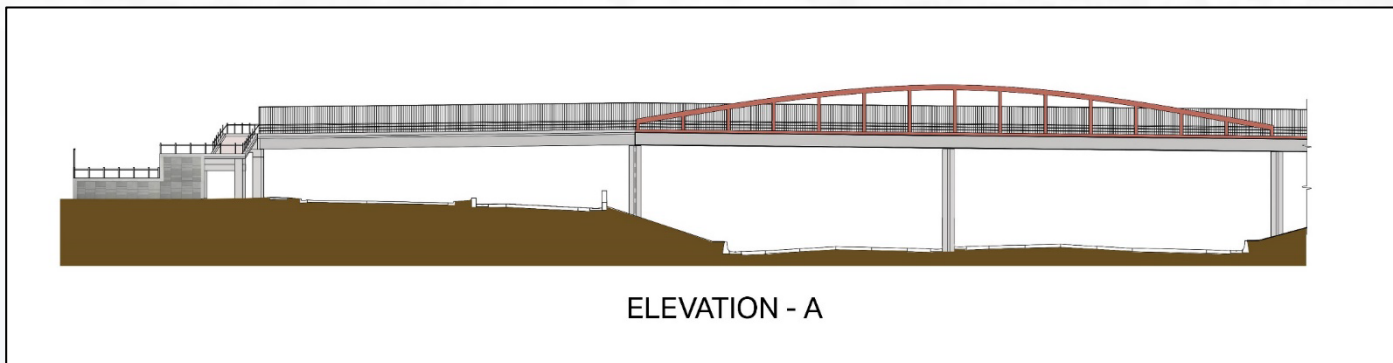


*Facing east from Junction Street alley*



*Night view: Facing south on Junction Street sidewalk*

# JUNCTION STREET PEDESTRIAN BRIDGE (NORTH)





# CONSTRUCTION UPDATE: US POE

- Utility relocations
- Major earthworks including wick drain installation and surcharge placement are ongoing:
  - 80,000 wick drains installed
  - Over 1.2 billion pounds of engineered fill and surcharged material placed.
- Building foundations are anticipated to begin in 2021
- Construction and environmental monitoring.



# CONSTRUCTION UPDATE: US BRIDGE SITE

- All 18 drilled shafts are complete, with tower footing construction underway:
  - Each tower footing requires more than 1,910 cubic metres/67,450 cubic feet of concrete, 440 tonnes/970,000 pounds of rebar and 1,600 metres/5,250 feet of post tensioning cables
- Construction of the back span and anchor piers
- Construction of the tower jumpform assembly
- Construction and environmental monitoring.



# CONSTRUCTION UPDATE: CDN BRIDGE SITE

- All 18 drilled shafts are installed in Canada with construction on the north and south tower footings underway:
  - Each tower footing requires more than 1,910 cubic metres/67,450 cubic feet of concrete, 440 tonnes/970,000 pounds of rebar and 1,600 metres/5,250 feet of post tensioning cables
- Tower construction has commenced on both tower legs
- Installation of the external and internal climbing system
- Expansion of the tower crane to the next stage
- Construction and environmental monitoring



# CONSTRUCTION UPDATE: CANADIAN POE

- Installation of wick drains is complete with 133,000 installed.
- 1.4 billion pounds of surcharge fill has been placed in a phased approach to help consolidate the soils.
- Installation of temporary and permanent stormwater retention ponds is ongoing
- Building foundations are anticipated to begin following the ground stabilization period.
- Construction and environmental monitoring



# CONSTRUCTION UPDATE: MI INTERCHANGE

- Mainline I-75 construction
- Utility relocations
- Phase One construction of the Michigan Interchange, including demolition and reconstruction of three I-75 road bridges is underway:

## Springwells Street Bridge

- Demolition is complete
- Piledriving is complete
- The north and southbound bridge abutments are complete
- Next steps include median pier construction, girder placement and deck construction
- Ramp and Service Drive reconstruction is ongoing.



*US Bridge Site*

# CONSTRUCTION UPDATE CONT'D: MI INTERCHANGE

- **Livernois Avenue Bridge**
  - Demolition is complete
  - Piledriving is complete
  - The Northbound bridge abutment is complete
  - The Southbound bridge abutment is ongoing
  - Next steps include, median pier construction, girder placement and deck construction.
- **Clark Street Bridge**
  - Demolition is complete
  - Piledriving and footing on northbound abutment is complete.
  - Excavation on the southbound abutment is ongoing and piledriving will follow.
  - Once piling is complete, next steps include, north and south abutment construction, median pier construction, girder placement and deck construction.





# US TRAFFIC CLOSURES

## Closures at Clark Street Extended

- The current closure of the southbound I-75 Clark Street on-ramp and exit, the intersection of Clark Street and the southbound I-75 Service will remain closed until October 9, 2020. This also includes:
  - The southbound I-75 Clark Street on-and-off ramps
  - Southbound I-75 Service Drive will be closed at West Grand Boulevard, with access to local traffic only, and completely between Scotten Avenue and McKinstry Street
  - Southbound traffic from the Vernor Highway to Scotten Avenue will be closed with access to local traffic only, and no outlet
  - Southbound traffic from the Vernor Highway to Clark Street will be closed with access to local traffic only, and no outlet.

*US Bridge Site*



# US TRAFFIC CLOSURES

West End Street and three lanes on Fort Street, including the center median, closed September 29, 2020, until November 20, 2020.

- West End Street will be closed between Fort Street and Melville Street. Local traffic and business traffic will have access to West End Street between Norfolk Southern Railroad to Melville Street.
- Traffic on Fort Street, between the northbound I-75 Service Drive and Wheelock Street, will be reduced to one lane each for westbound and eastbound traffic.
- Temporary pavement markings will be installed on Fort Street on September 29, 2020, between 6 a.m. and 6 p.m., and on October 28, 2020, between 6 a.m. and 6 p.m.

*US Bridge Site*

# UPCOMING LONG-TERM TRAFFIC CLOSURES

## I-75 Northbound and Southbound

- Bridging North America will implement temporary long-term closures on the left lanes of I-75 north and southbound. This closure is required to support construction works for Springwells Street, Livernois Avenue and Clark Street bridges.
- The left lane on I-75 northbound between Springwells Street and Clark Street will close from October 2020, until October 2021.
- The left lane on I-75 southbound between Clark Street and Springwells Street will close between October 2020, until October 2021.

*US Bridge Site*

# CONSTRUCTION MITIGATION

Measures are being taken to minimize the impact of construction in accordance with the commitments in the approved Environmental Assessment Report and Federal Screening Report in Canada and the Environmental Impact Statement in the US. These include:

## Dust control

- periodic watering or stabilization of disturbed and exposed soils
- limit speed of vehicular traffic
- use water sprays during loading/unloading of materials
- sweep or water flush entrances to construction zones
- installation of monitoring stations at the perimeter of construction areas.

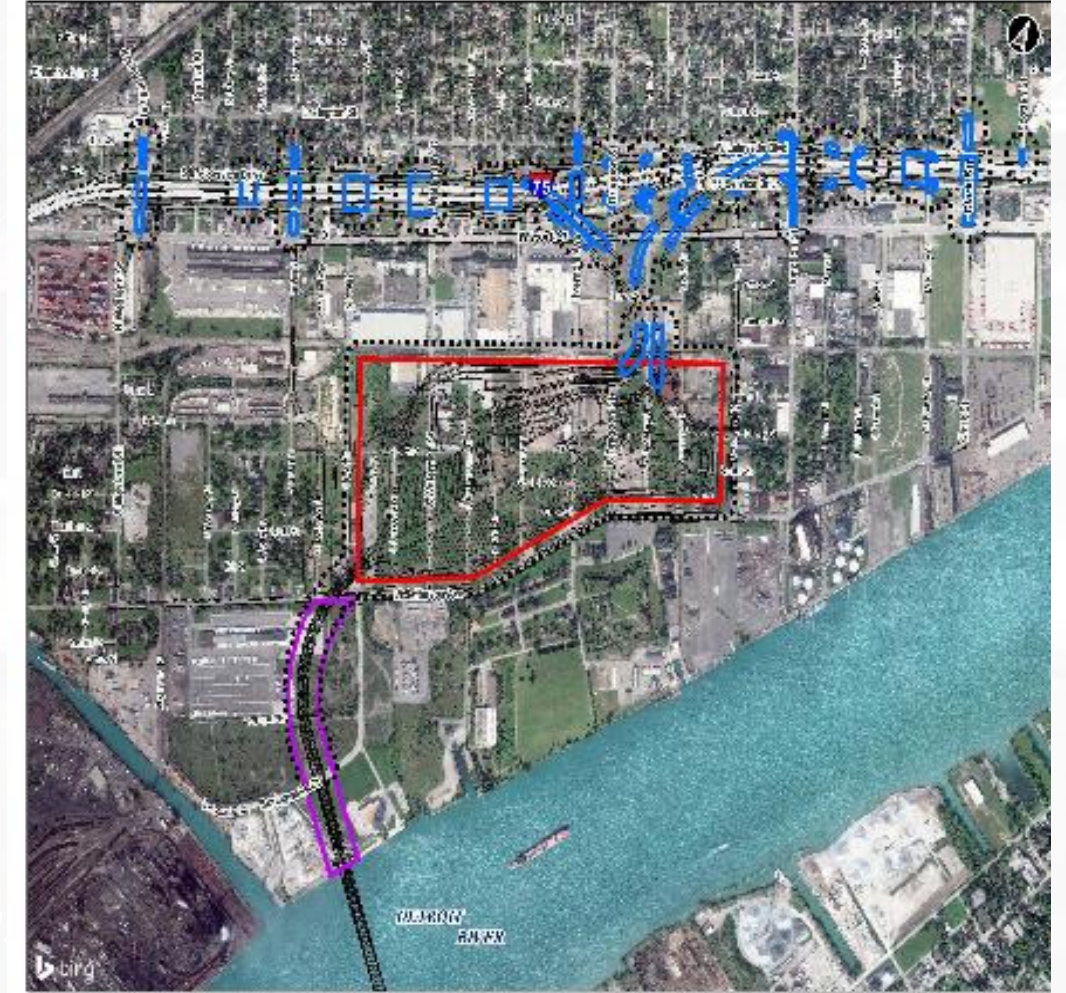
## Noise

- ensure all construction equipment is in good repair, fitted with functioning mufflers and complies with noise emission standards
- maximize the distance between the construction staging areas and nearby receptors
- provide regular updates to nearby residents and businesses on possible activities that will affect them
- conduct ongoing noise monitoring in the vicinity of construction.

# CONSTRUCTION MITIGATION

## Vibration Monitoring

- In some instances, construction activities may cause noise and vibration beyond the project limits.
- In accordance with the Final Environmental Impact Statement (FEIS) and the Record of Decision (ROD), pre-construction, construction and post-construction foundation surveys will be made available to owners of properties located within 150 feet of identified vibration zones.
- Monitoring is being undertaken in a staged approach.
  - Zone One began late 2019
  - Zone Two is anticipated to begin in late 2020/early 2021.
- Owners of residential and business properties that fall within the identified areas will be notified.



# COMMUNITY BENEFITS PLAN



**The Workforce Development and Participation Strategy** is geared toward engaging businesses and focuses on supporting workforce, training and pre-apprenticeship/apprenticeship opportunities



**The Neighbourhood Infrastructure Strategy** focuses on collaborating with stakeholders and community members through consultation to develop a community investment strategy based on identified priorities.

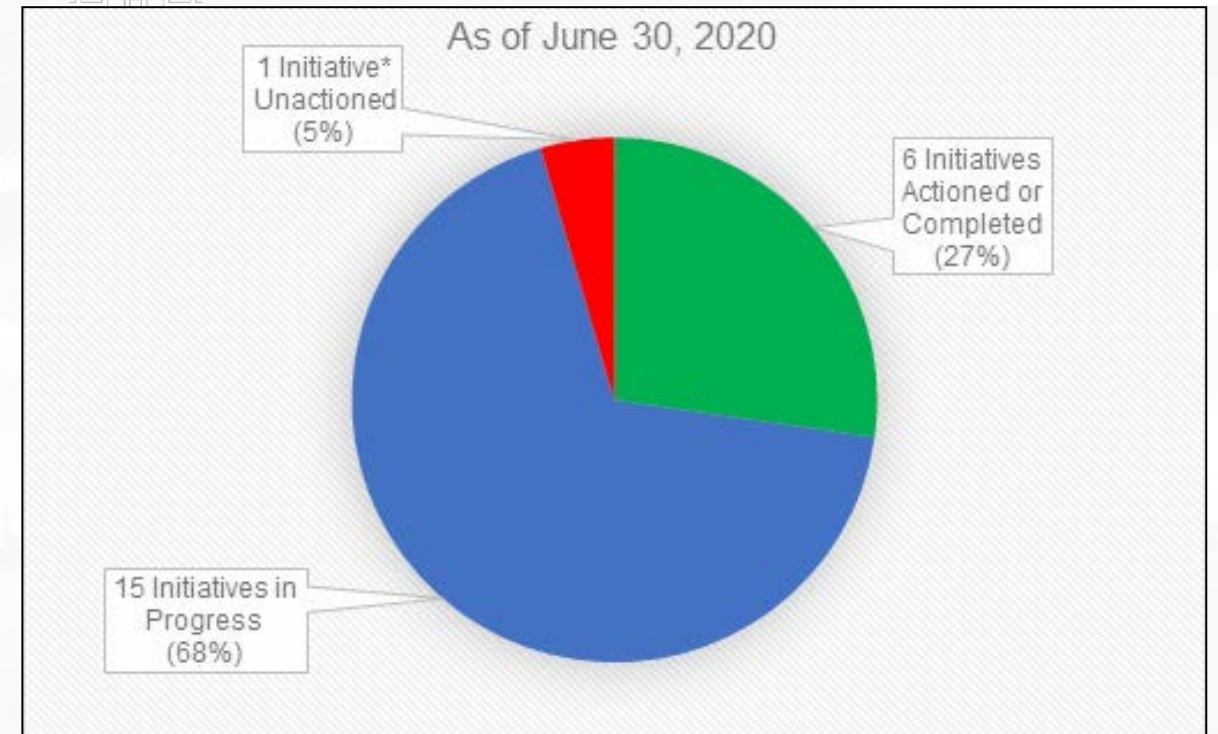
*US Bridge Site*

# COMMUNITY BENEFITS IMPLEMENTATION PROGRESS

The project team continues to meet virtually with delivery partners in both Canada and the US to move Community Benefits Plan initiatives forward, realizing some of the positive social, environmental and economic outcomes envisioned for the Sandwich and Southwest Detroit communities.



## Neighbourhood Infrastructure Strategy Initiative Status



*US Bridge Site*

# 2021 COMMUNITY ORGANIZATION INVESTMENT

Applications for funding through the 2021 Community Organization Investment initiative will launch in **November 2020 and close in January 2021.**

An annual **\$50,000 (CDN)** investment allowance per country will be made available between 2020 and 2024. Requests for funding can range from **\$1,000 - \$25,000 (CDN).**

Applications will be considered for funding if:

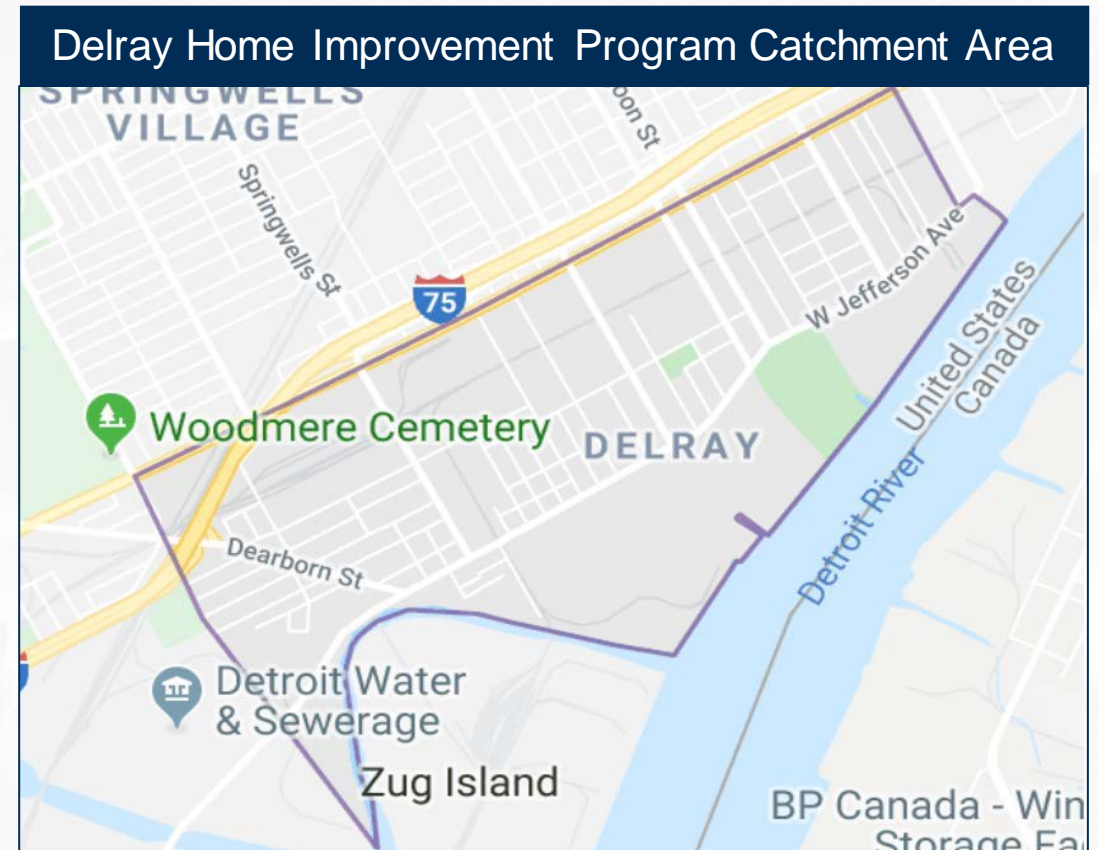
- The organization(s) applying is located in or provides services to the host communities of Sandwich/west Windsor or Delray/Southwest Detroit neighbourhoods
- The requested funding will be invested in events, programming and infrastructure improvements that will benefit the host communities
- The applicant is a registered non-profit or charitable organization charity or has a trustee relationship with a registered charity.

**Funding will be available to selected recipients in July 2021.**



# DELRAY HOME IMPROVEMENT PROGRAM

- The Community Benefits Home Repair Program is anticipated to launch in late 2020, and continue through to 2024, funding permitted.
- Initial target area includes properties located south of I-75 in Delray.
- Repairs that will be offered to eligible homes include:
  - Window replacement
  - HVAC system replacement
  - Insulation
  - Roof Repair
- Repairs will be undertaken in a staged approach.



Visit [GordieHoweInternationalBridge.com](https://GordieHoweInternationalBridge.com) to stay informed about the Delray Home Improvement Program.



# BRIDGING NORTH AMERICA HIRING & PROCUREMENT



[jobs@bnacagp.com](mailto:jobs@bnacagp.com)



[procurement@bnausjv.com](mailto:procurement@bnausjv.com)

# QUESTION AND COMPLAINT PROCESS


The project team is committed to ensuring that communication with the public is maintained during construction so concerns are addressed as quickly as possible. Adjacent residents and businesses will receive notifications of upcoming work, regular progress updates and project contact information

Questions and complaints can be addressed to WDBA through the following:

- Public inquiry line: 1-844-322-1773
- [Info@wdbridge.com](mailto:Info@wdbridge.com)

# LEARN MORE

 [gordiehoweinternationalbridge.com](http://gordiehoweinternationalbridge.com)

 1-844-322-1773

 @gordiehowebrg

 @gordiehowebridge

 Gordie Howe Bridge

 @gordiehowebrg

 WDBA-APWD

