

Gordie Howe International Bridge



Quarterly Public Meeting - Windsor
July 25, 2018

This presentation is for informational purposes only and may change as a result of the procurement process underway

Gordie Howe International Bridge Project

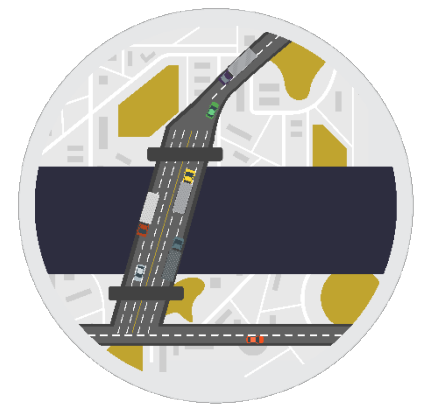
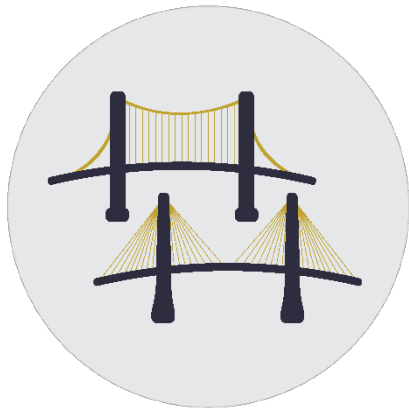
What is the need?

Redundancy

Capacity

Border processing capabilities

System connectivity

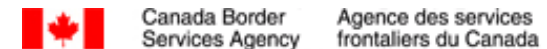
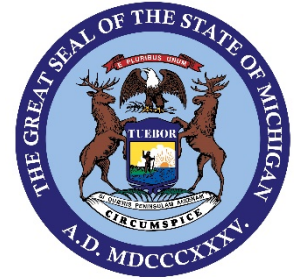


What is Windsor-Detroit Bridge Authority?

- A not-for-profit Canadian Crown corporation created in 2012
- Reports to the Canadian Government through the Minister of Infrastructure and Communities
- Manages the procurement process for the design, construction, financing, operation and maintenance of the new bridge through a public-private partnership (P3)
- Will oversee the work of the P3 partner and will manage the project agreement and payments

Project Collaboration: Working with Michigan

- MDOT and the Governor's Office are active participants in the planning and in advance of the Gordie Howe International Bridge.
- Michigan's participation in the project is vital and MDOT plays a key role in the delivery of the project which includes supporting WDBA in:
 - US property acquisition
 - US utility relocation
 - Coordinating activities
 - P3 procurement process
 - US stakeholder interactions and community outreach initiatives.
- The Gordie Howe International Bridge will be publicly-owned by the Government of Canada and the State of Michigan.



Gordie Howe International Bridge Project

Consultation and Communication

Public consultation will continue in Canada and the US throughout the project phases. The DRIC study identified many items that require public consultation prior to implementation.

Topics

Aesthetics, Lighting, Visual Effects
Sediment Erosion
Air Quality
Species at Risk/Invasive Species/Wildlife/Migratory Birds
Archaeology
Traffic/Local Roads
Fish/Aquatics
Vegetation/Trees
Infrastructure
Vibration
Noise
Waste/Spills/Excavated Materials
Pedestrians/Bicycling Bridges at Michigan Interchange
Water Quality/Groundwater/Stormwater/Surface Water

When?

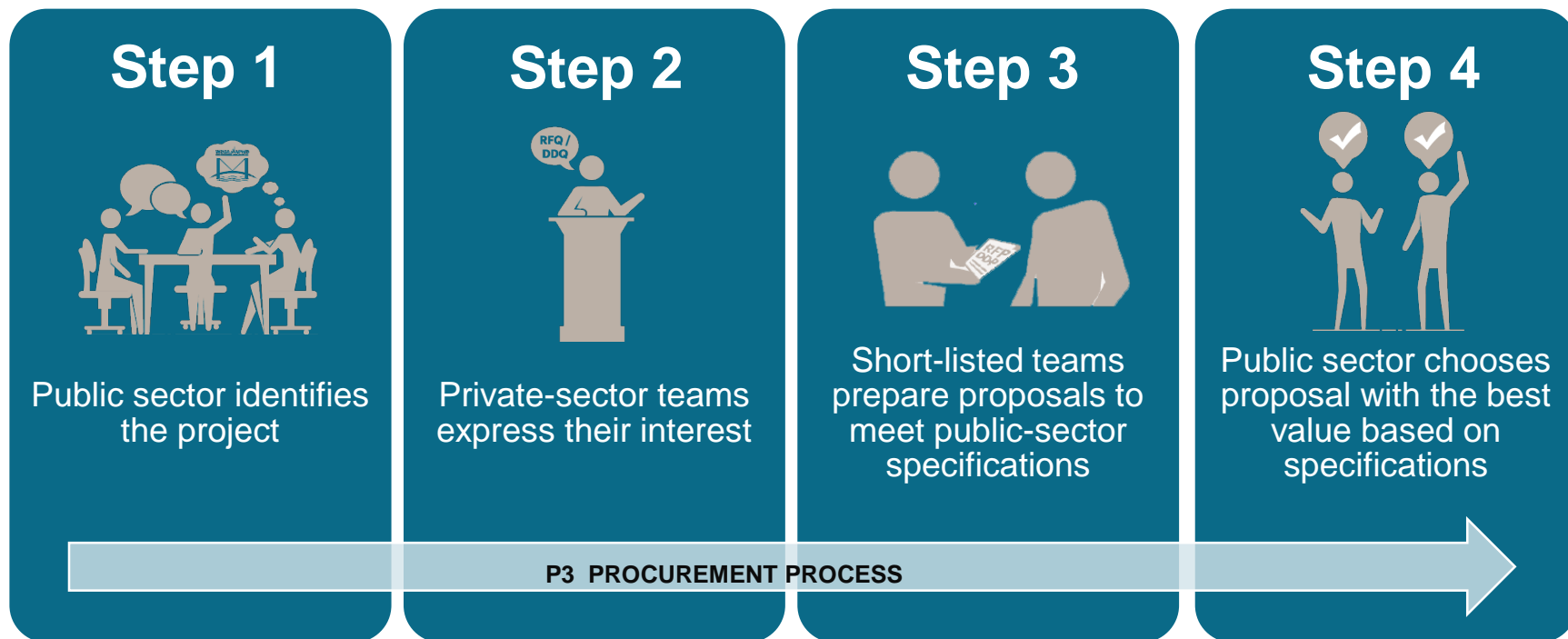
Consultation will occur throughout the Design and Build phases of the project

Design Phase

Build Phase

The Procurement Process: Overview

WDBA's procurement process is designed to choose a private-sector partner with the skills, experiences and resources necessary to design, build, finance, operate and maintain the Gordie Howe International Bridge project.



Gordie Howe International Bridge Project

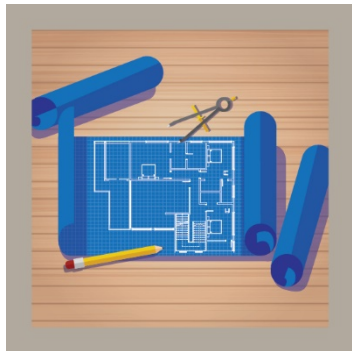
Preferred Proponent



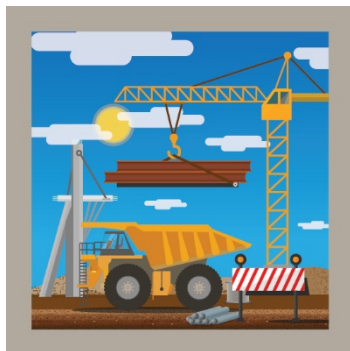
Gordie Howe International Bridge Project

Private-Sector Partner Responsibilities

WDBA's private-sector partner will be responsible to design, build, finance, operate and maintain the Canadian and US Ports of Entry and the bridge and to design, build and finance the Michigan Interchange. Michigan will be responsible for the operations and maintenance of the Michigan Interchange.



Design



Build



Finance



Operate



Maintain

Gordie Howe International Bridge Project

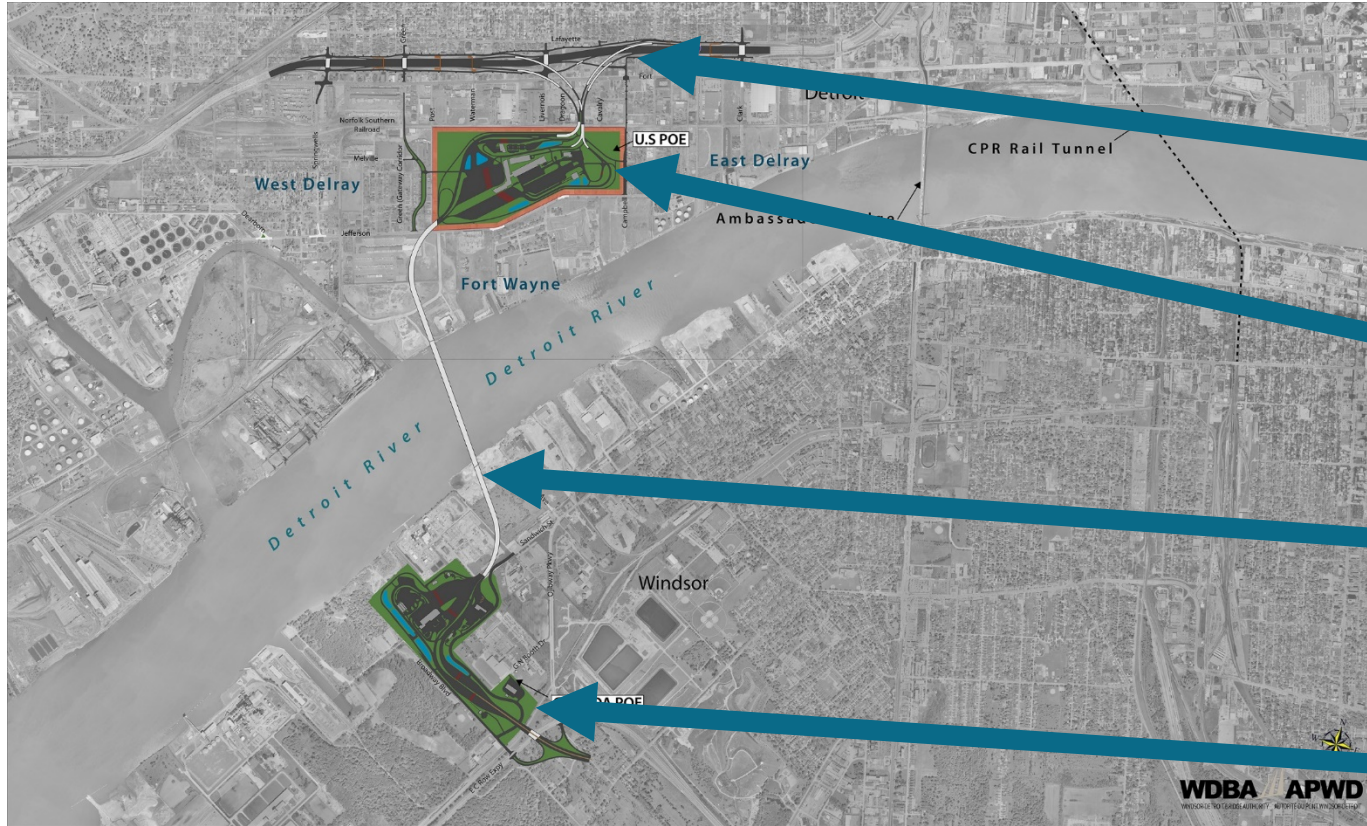
Proposals Evaluation

- The technical and financial proposals were evaluated by subject-matter experts with extensive engineering and financial, and legal expertise.
- Technical score and financial score combined.
- WDBA looked for the proposal that best met the requirements set out in the RFP and provides the best value to deliver the project requirements.
- Proponent with highest overall score is the Preferred Proponent.

Evaluation Principals

- Independent and Unbiased
- Conducted by experts and overseen by professionals
- Segregation of Information
- Transparent and Confidential

Project Components



Legend

1. Michigan Interchange
2. US Port of Entry (POE)
3. Gordie Howe International Bridge
4. Canada Port of Entry (POE)

Gordie Howe International Bridge Project

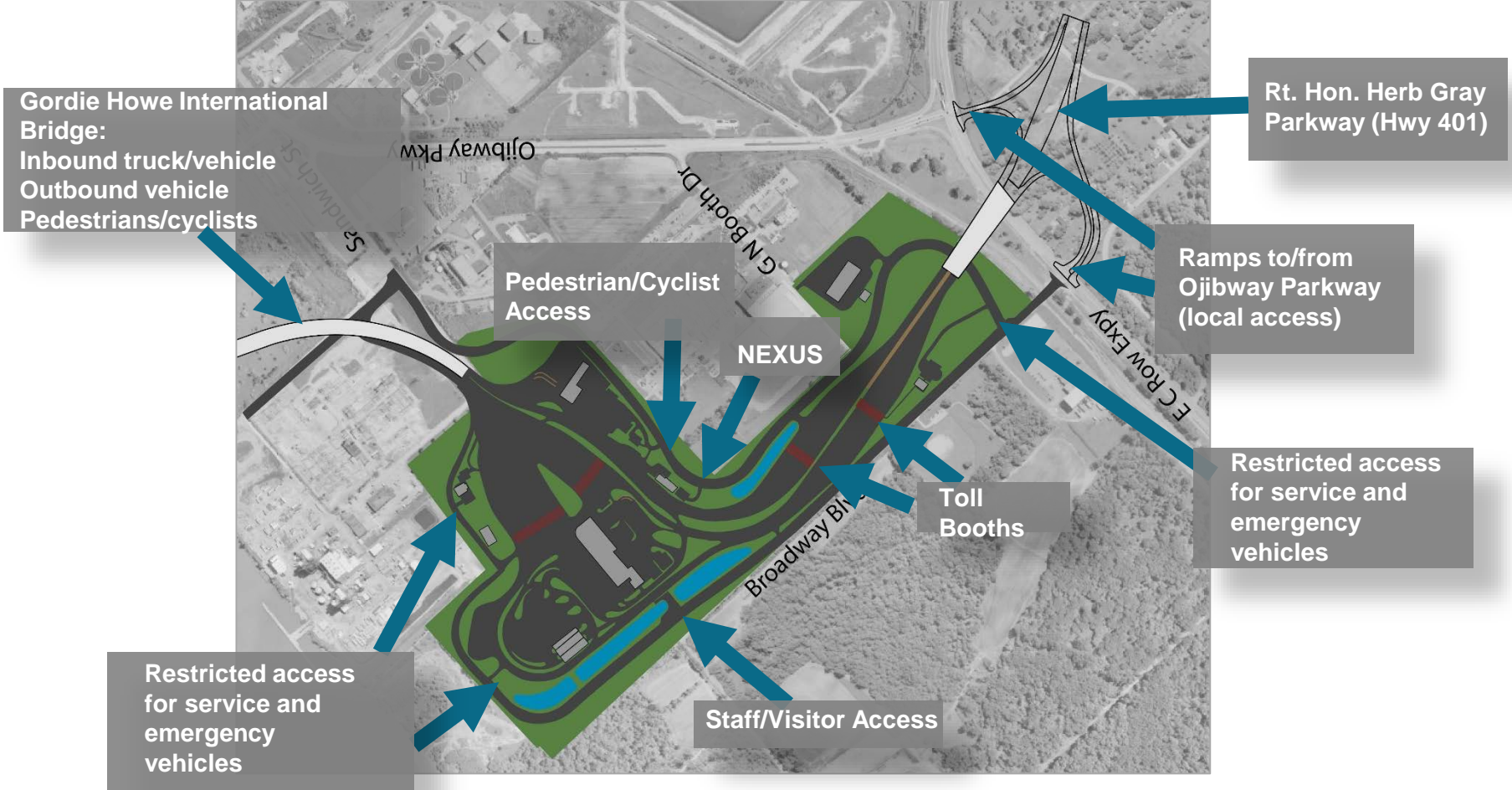
The Bridge

- 6 lanes – 3 in each direction
- 2.5 kilometres / 1.5 miles
- Clear span of 850 metres / 0.53 miles
- Multi-use path for pedestrians and cyclists 3.6 metres / 11.8 feet wide

Conceptual design

Gordie Howe International Bridge Project

Canadian Traffic Patterns: Anticipated Access Points



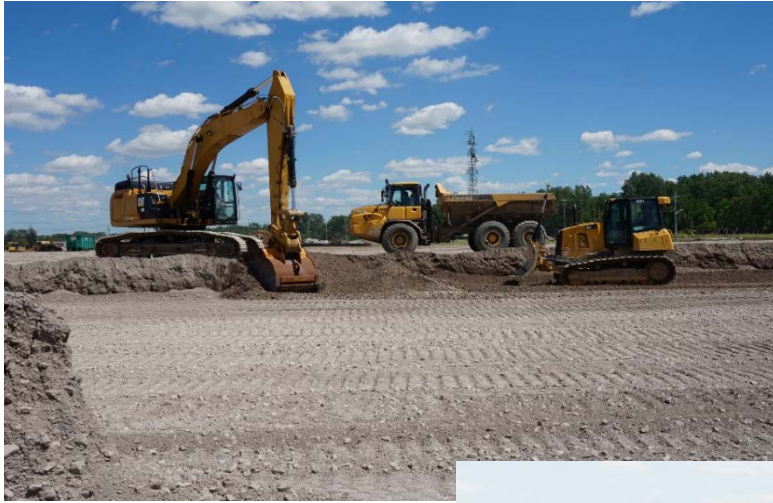
Gordie Howe International Bridge Project

US Traffic Patterns: Anticipated Access Points



Gordie Howe International Bridge Project

Preparing the Canadian Site: Phase One



Gordie Howe International Bridge Project

Preparing the Canadian Site: Phase Two



Gordie Howe International Bridge Project

Connecting to the Rt. Hon. Herb Gray Parkway



Gordie Howe International Bridge Project

US Works: Property Acquisition

- 636 land parcels are required for the Gordie Howe International Bridge project.
- To date, MDOT has acquired and/or has control of 95 per cent of the required parcels.
- Relocation assistance and support will continue to be provided.
- The condemnation process will be carried out as needed on a parcel-by-parcel basis.

Property by the Numbers

636 total land parcels required

211 residential relocations required

88 business relocations required

95 per cent of total property acquired/in control

256 structures demolished or in demolition process as of July 16, 2018

US Works: Utility Relocation

- Utilities located within the US Port of Entry footprint and the land required for the bridge footings require relocation.
- Many utilities are completing the relocation work themselves or through their preferred contractor.
- Private utility relocation work will occur with no anticipated service interruptions.
- All utility relocation work (Permitted Activity) must comply with municipal guidelines and procedures for notifications, hours of work, noise and disposal of materials as outlined in the permitting documents.

Gordie Howe International Bridge
Construction Activities: United States

Week of August 1, 2016

Demolition Activity
Demolition work will occur on West Fort Street (between Dragon Street and Military Street), Baulow Court (near Livemore Avenue), Livemore Avenue (between Lafayette Boulevard and the Southbound I-75 Service Drive) and Crawford Street (between South Street and Jefferson Avenue). The roads will remain open and the work is not expected to impact traffic.

Preliminary Site Investigation (PSI)
PSI work will occur on the Southbound I-75 Service Drive (between Livemore Avenue and Crawford Street). The road will remain open and the work is not expected to impact traffic.

Survey Activity
Survey Crews will be working on Springville Court (south of Jefferson Avenue), Gliman Street (between Lafayette Boulevard and I-75), Solway Street (between Lafayette Boulevard and I-75), Crawford Street (between Lafayette Boulevard and I-75), and Campbell Street (between Amherst Street and I-75). The roads will remain open and the work is not expected to impact traffic.

Utility Work
There is no utility work currently planned.

Temporary Road Closures
There are no road closures currently planned.

Follow the project
www.usbridge.com
www.instagram.com/detroitdetroitbridgeauthority
www.facebook.com/WCSA48rfdp
www.twitter.com/WCSA48rfdp
www.youtube.com/channel/UCWCSA

WDBA **APWD**
WINDSOR DETROIT BRIDGE AUTHORITY | ACTIVE DETROIT WINDSOR STREET

WDBA posts weekly Construction Notices online and at various community locations in Windsor and Detroit regarding upcoming work

Gordie Howe International Bridge Project

US Advance Construction Groundbreaking



Gordie Howe International Bridge Project

Mitigation Elements: What to Expect

In accordance with commitments made during the Detroit River International Crossing (DRIC) study, the following mitigation elements were identified for inclusion during construction of the US components of the Gordie Howe International Bridge:

- 100- ft landscaped buffer to be incorporated in the lands surrounding the perimeter fencing of the Port of Entry.
- Existing trees will be preserved where possible and landscaping will emphasize the incorporation of native species.
- Fence installation surrounding the Port of Entry lands.
- Noise barriers to be installed in locations identified through the DRIC study.
- Port of Entry lighting will minimize impacts to adjacent residents and wildlife.
- Stormwater management facilities will be constructed within the project footprint to ensure adequate site drainage.



The community will continue to have consultation opportunities with the P3 partner during design and construction phases of the Gordie Howe International Bridge project.

Construction Zone Safety

- Construction is underway, and truck drivers, motorists, pedestrians and cyclist alike need to be prepared.
- Construction zones are dangerous places whether workers are present or not.
- Any entry into the construction site is considered trespassing.
- For your safety and the safety of the workers, please do not enter from adjacent sidewalks, parks or neighbourhoods.



Community Benefits Plan

Canadian and US consultation suggests the following regional priorities:



WDBA in the Community



Gordie Howe International Bridge Project

WDBA in the Community




Gordie Howe International Bridge Project

Engaging Youth



WDBA APWD
WINDSOR-DETROIT BRIDGE AUTHORITY | AUTORITÉ DU PONT WINDSOR-DÉTROIT



**Show Us Your Bridge
2018
Art Challenge**

www.GordieHoweInternationalBridge.com

Gordie Howe International Bridge Project

Preparing for Jobs



Regional hiring is anticipated for jobs on both sides of the border



Local subcontractors offer the private-sector partner benefits such as proven experience with local labour pools and knowledge of local conditions



A local employment planning council completed a study of jobs most likely in demand for the project: www.workforcewindsorsex.com

WDBA APWD
WINDSOR DETROIT AREA PRIVATE-SECTOR PARTNER

Gordie Howe International Bridge Skilled Trade Job Opportunities

The Gordie Howe International Bridge project will bring job opportunities to the Windsor-Detroit area in many fields. Consisting of four components – the bridge, two Ports of Entry and the Michigan Interchange – the project will generate significant employment not just during the construction phase, but also during the operations phase that follows. Occupations anticipated to be in demand by WDBA's future private-sector partner are identified in bold and related training programs are in italics.

Building Technician <i>Architectural Technology</i>	CAD Designer/Specialist <i>Civil Engineering Technology, Mechanical Technician - CAD/CAM</i>	Highway Electrician	Millwright <i>Mechanical Engineering Technician - Industrial</i>	Foreman
Carpenter <i>Carpentry and Renovation Techniques</i>	Telecommunications Technician <i>Computer Networking Technician</i>	Ironworker	Toolroom Attendant <i>Mechanical Engineering Technician - Industrial</i>	Pipe Fitter <i>Pipelining Techniques, Welding Techniques</i>
Construction Site Logistics Planner <i>Civil Engineering Technology</i>	Highway Maintenance Technician <i>Construction Engineering Technician</i>	Painter	Fleet Mechanic <i>Mobile Power Technician/ Apprenticeship</i>	Pipe Welder <i>Welding Techniques</i>
Estimator <i>Civil Engineering Technology, Construction Engineering Technician</i>	Sign Crew Member <i>Construction Engineering Technician</i>	Electrical Estimator <i>Electrical Techniques</i>	Electrician <i>Electrical Techniques</i>	Mechanic <i>Power Engineering Technology - Mechanical</i>
Surveyor <i>Civil Engineering Technology, Mechanical Technician - CAD/CAM</i>	Heavy Equipment Operator <i>Construction Engineering Technician</i>	HVAC <i>Heating, Refrigeration & Air Conditioning Technician</i>	Instrument Fitter	Mechanical Technologist <i>Power Engineering Technology, Mechanical</i>
	Concrete Finisher	Irrigation Technician <i>Horticulture Technician</i>	Testing and Commissioning Field Specialist	Heavy Mechanic <i>Truck and Coach Technician/ Apprenticeship</i>
		Concrete Paving Labourer and Cement Mason <i>Landscape Horticulture</i>	Technical Services Technician	

Some of these jobs require specialized training that is available at colleges and universities in Greater Detroit and Windsor-Essex. Contact your local college or university today to learn more about the training that may be needed to gain work on the project.
* List provided by Workforce WindsorEssex

Canada ^{INT}

West Delray, US POE, East Delray, Ambassador Bridge, Fort Wayne, Detroit River, Windsor, CANADA POE

#GORDIEHOWEBRIDGE

Stay Connected

There are many ways to stay up-to-date on the project.

- Follow us @gordiehowebtg
- Like us @gordiehowebtbridge
- Follow us @gordiehowebtg
- Connect with us WDBA-APWD
- Subscribe to YouTube.com/GordieHoweBridge
- Visit our website wdbridge.com
- Call us 519-946-3038
- Email us info@wdbridge.com

WDBA APWD

Gordie Howe International Bridge Project

Preparing for Jobs: Construction and Beyond

- Construction jobs will last several years
- Operations jobs will be ongoing and include roles such as landscaping, security, maintenance, etc.
- Both phases will provide opportunities for businesses that supply goods, materials and services for the project

Workforce preparation:

- Security clearances
- Trade certification
- Health and safety awareness/training
- Past experience in similar roles
- References of past jobs/contacts

Next Steps

- Early Work
 - Advance construction in Michigan
 - Timing: July
- Financial Close
 - Negotiate partnership details
 - Execute Project Agreement (contract for next 30 years)
 - Timing: by end of September
- Start of Construction
 - Begin major construction
 - Timing: Fall 2018

FOLLOW US ON



@GordieHoweBrg



@GordieHoweBridge



@GordieHoweBrg



@WDBA-APWD



YouTube.com/GordieHoweBridge

www.wdbridge.com